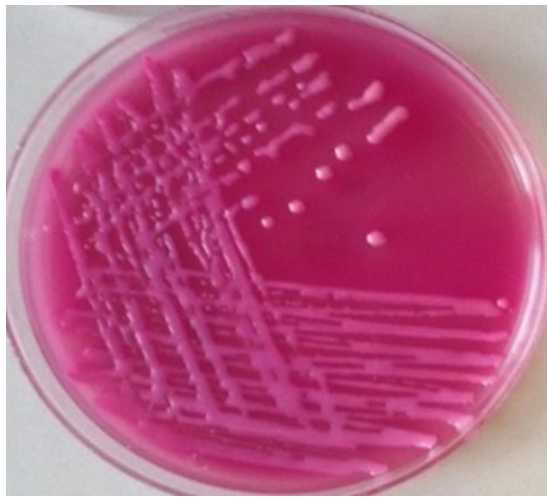


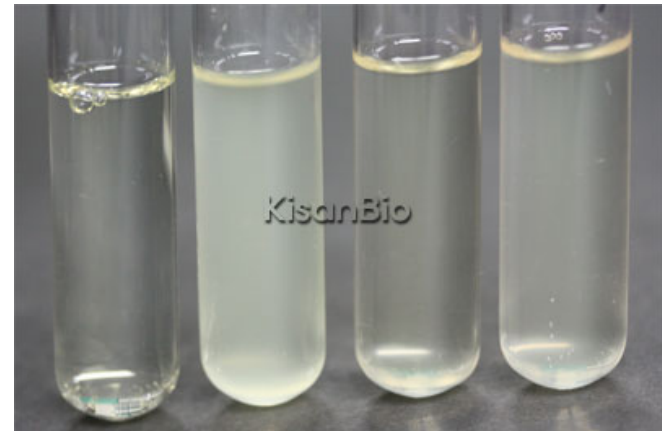
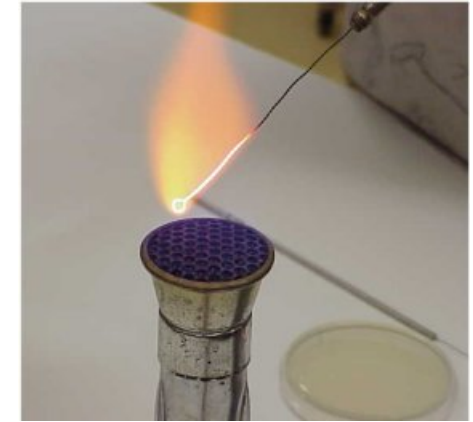
Antibiotic susceptibility test Kirby-Bauer disk diffusion method



Isolated colonies

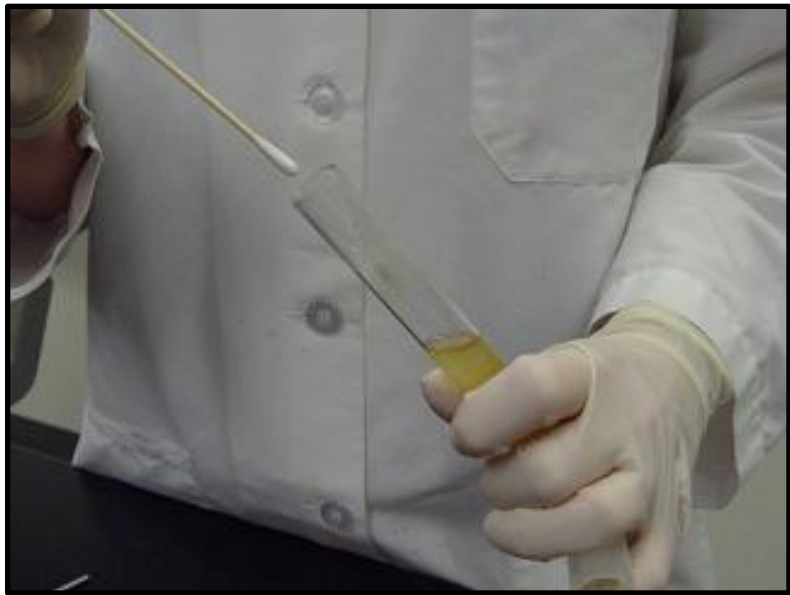
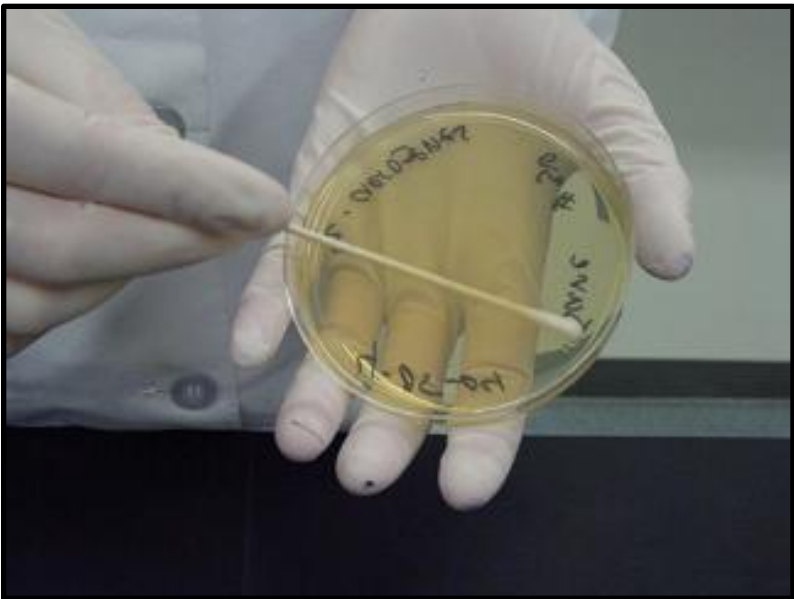


Avoid mixed colony

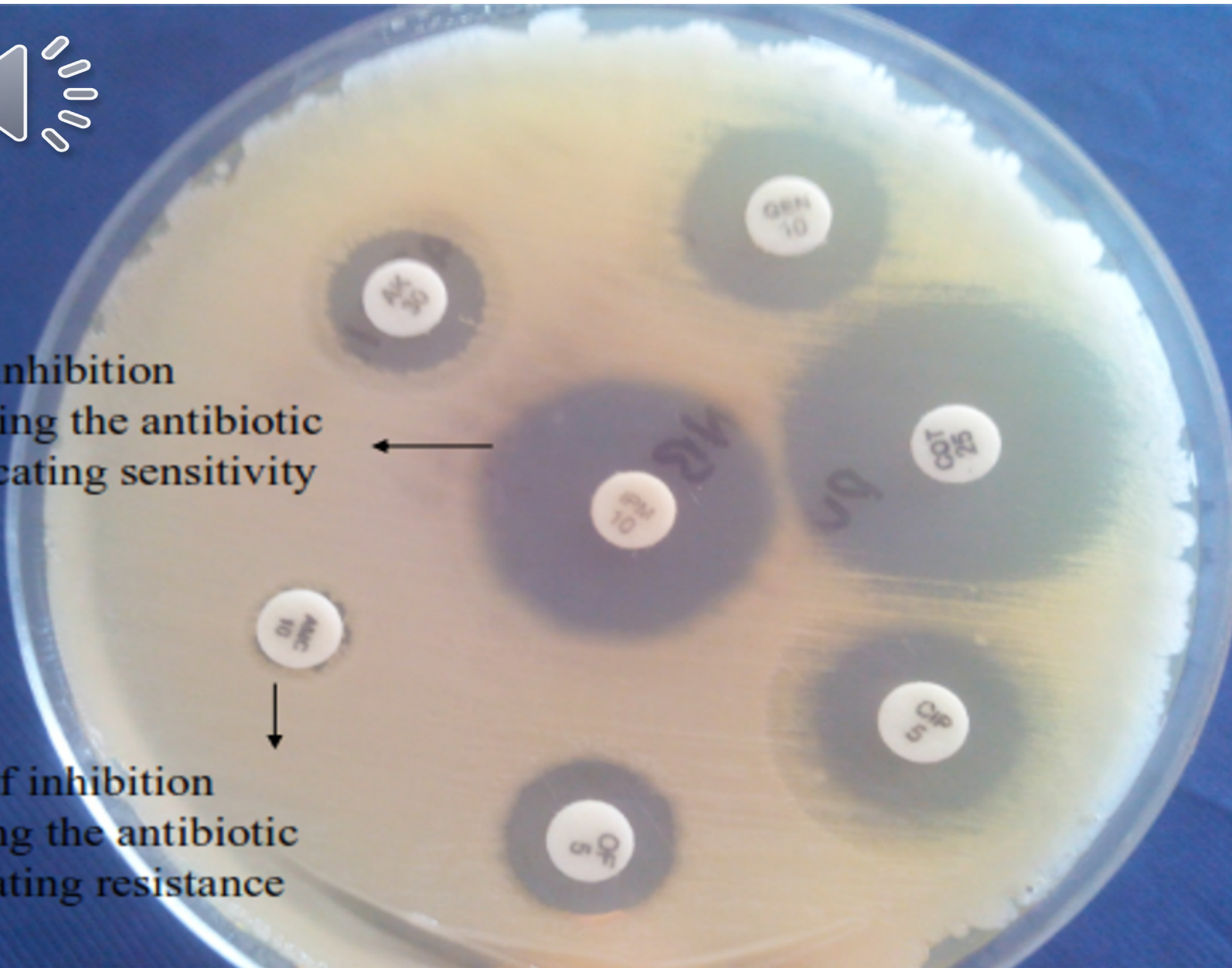


MB-M1034 Mueller Hinton Broth
Uncultivated
/ Cultivated *E.coli* / *Staphylococcus aureus* / *Enterococcus*







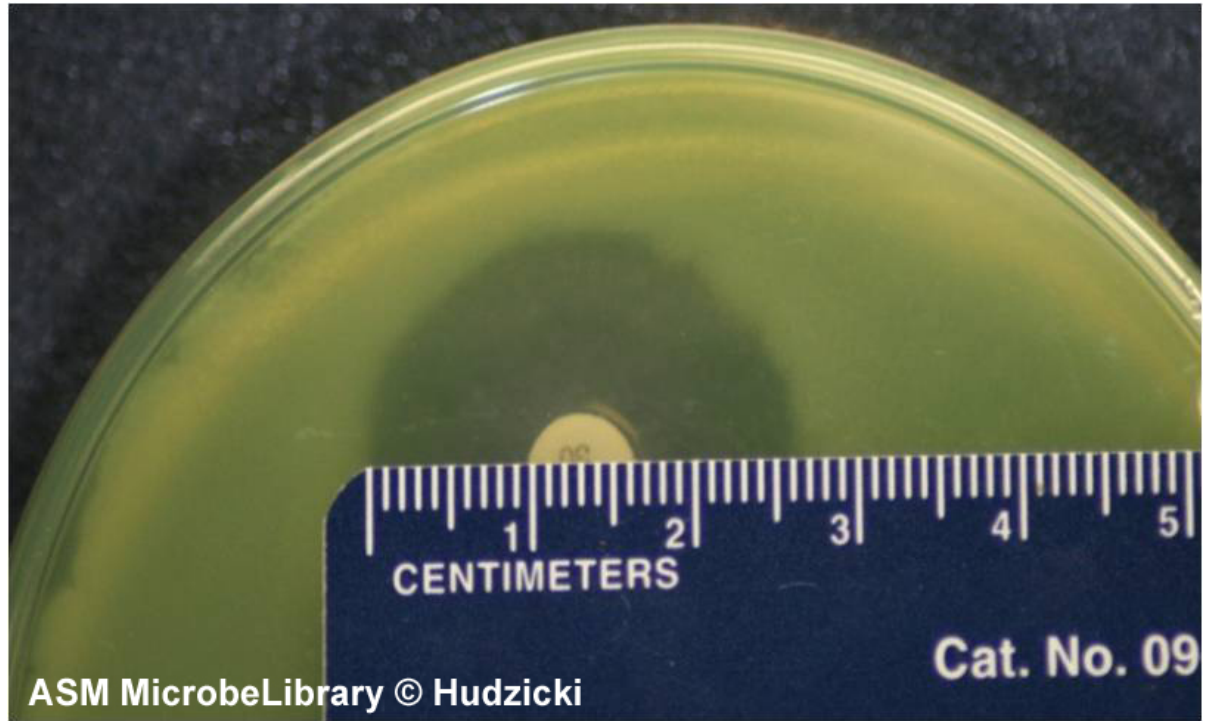
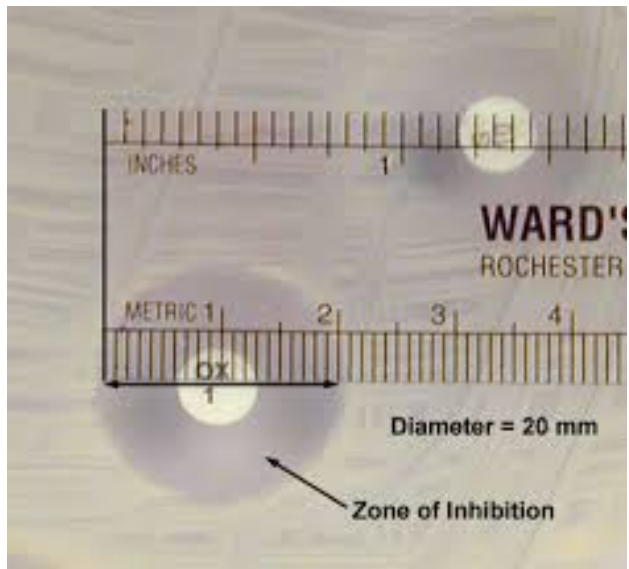


Zone of inhibition surrounding the antibiotic disc indicating sensitivity



No zone of inhibition surrounding the antibiotic disc indicating resistance





Antibiotics used	Zone diameter measured (mm)		
	Sensitive	Intermediate	Resistant
Ampicillin, 10 µg	≥ 10	N/A	≤ 9
Chloramphenicol, 30 µg	≥ 23	12 - 22	≤ 11
Clindamycin, 2 µg	≥ 18	16 - 17	≤ 15
Ciprofloxacin, 5 µg	≥ 24	19 - 23	≤ 18
Erythromycin, 15 µg	≥ 19	16 - 18	≤ 15
Gentamicin, 10 µg	≥ 23	N/A	≤ 22
Kanamycin, 30 µg	≥ 18	14 - 17	≤ 13
Nalidixic acid, 30 µg	≥ 15	N/A	≤ 14
Streptomycin, 10 µg	≥ 15	12 - 14	≤ 11
Tetracycline, 30 µg	≥ 33	16 - 32	≤ 15
Vancomycin, 30 µg	-	-	-

- Antibiotic susceptibility test
kirby bauer disk diffusion method video

https://www.youtube.com/watch?v=BXr_kcki4Ag&t=12s

E test (Quantitative)

