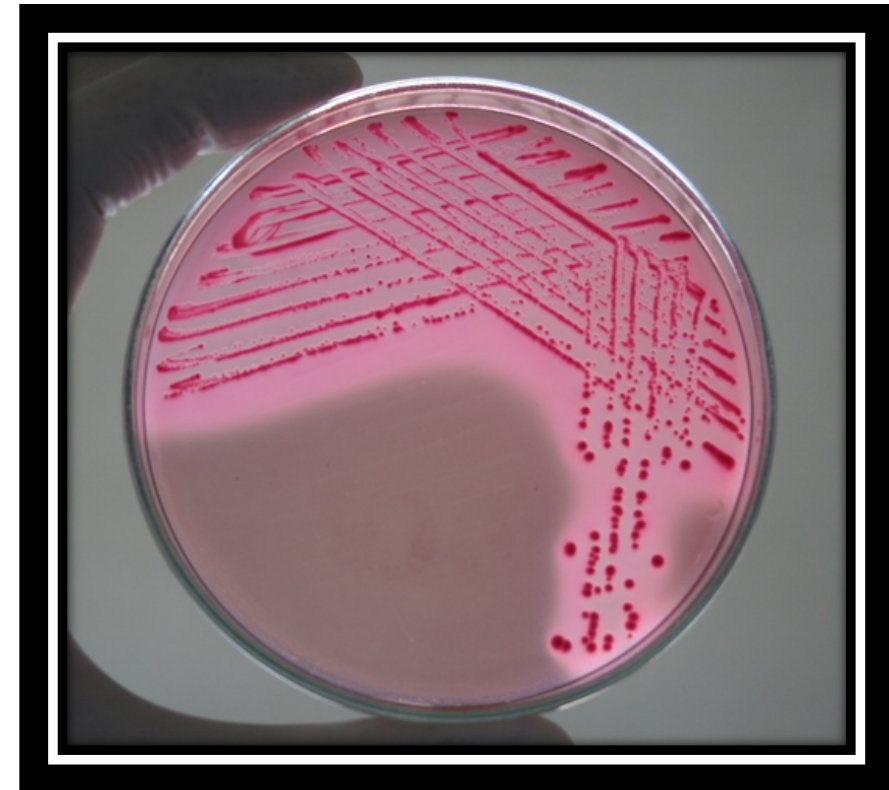


Gram Negative Bacteria



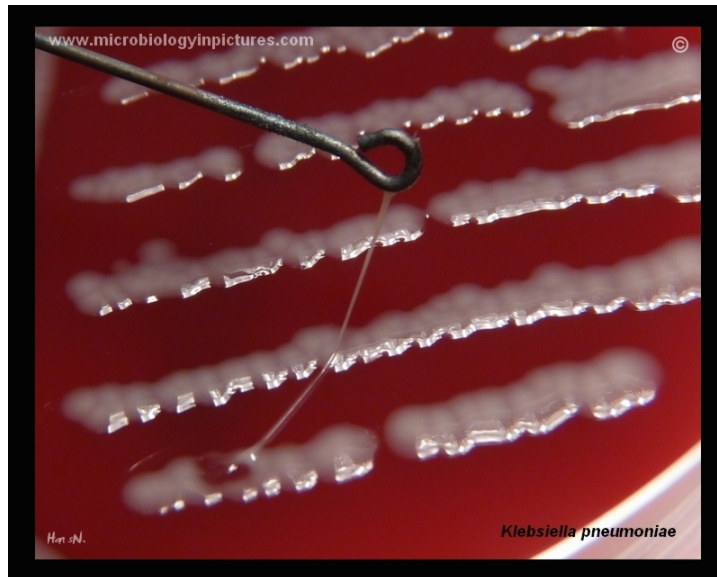
1. Escherichia coli





2. Klebsiella

- Large *mucoïd* polysaccharid e capsule .



3. Enterobacter

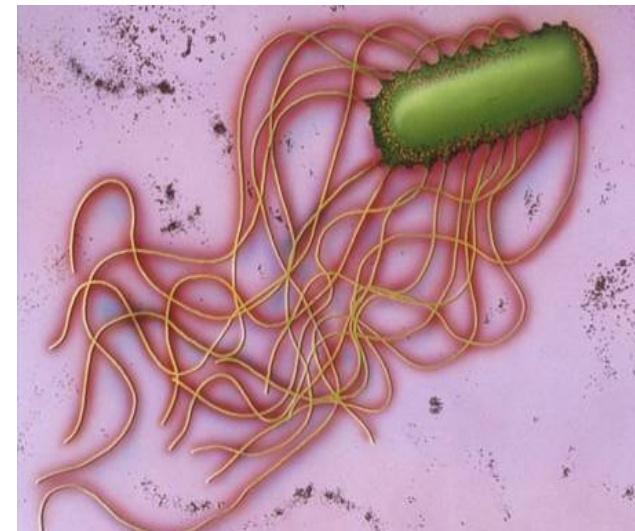


4. Citrobacter



Proteus

- Gram negative rods , non lactose fermenter
- Swarming motility (flagellated)
- Prevent swarming by culturing it on CLED or Macconkey media



Pseudomonas aeruginosa

identified by :

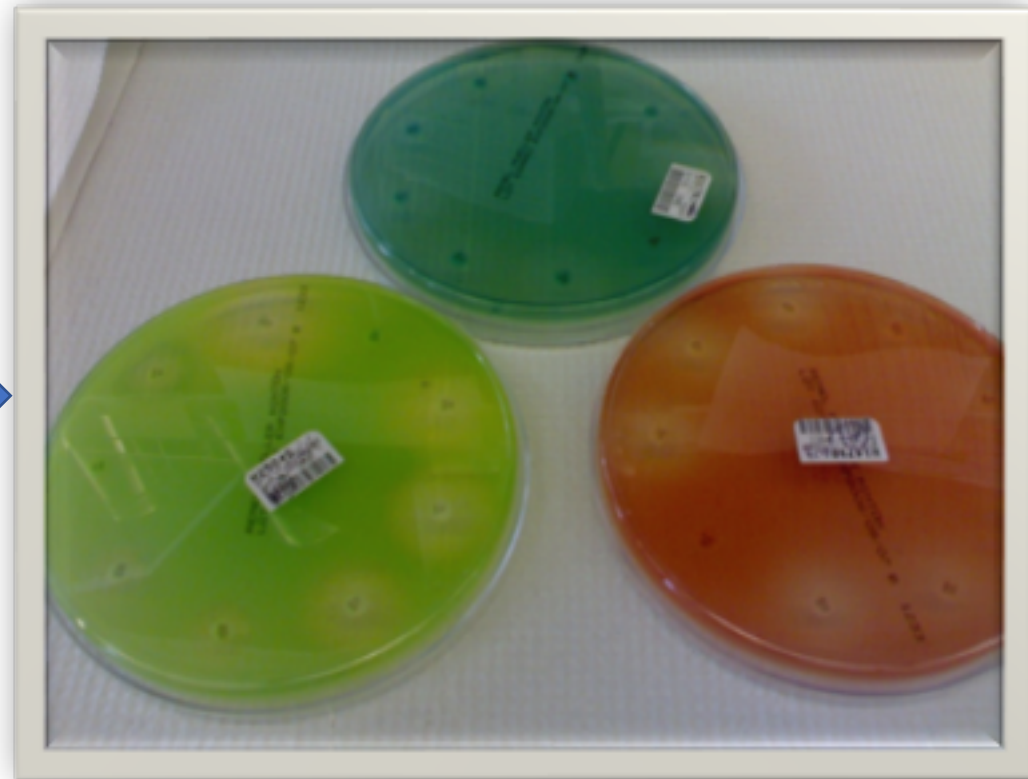
- **Gram negative rods**
- **odor** : grape-like smell.
- Oxidase positive.
- Produce different pigments colors:
 - **Pyocyanine (blue-green)**
 - **Pyoverdinin (fluorescent yellow –greenish pigment).**
 - **Pyorubrin (red).**
 - **Pyomelanin (brown).**



*Pseudomonas
aeruginosa*



Pseudomonas aeruginosa on mueller hintion agar





**Thank you
Any Question ??**