

\*A branch of the maxillary division of trigeminal nerve.

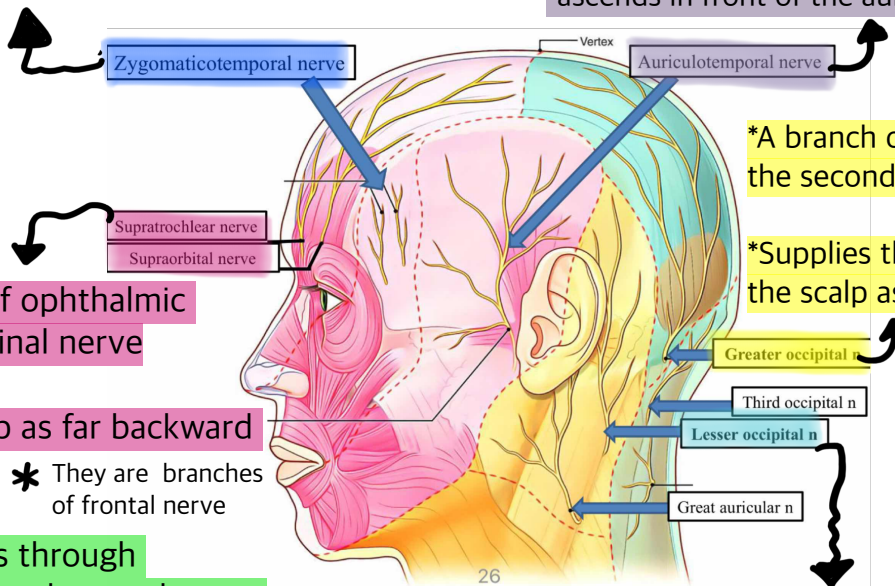
\*supplies the skin over the temporal region

\*A branch of the mandibular division of the trigeminal nerve

\*Supplies the skin over the temporal region

\*Emerges from the upper border of parotid gland.

\*ascends in front of the auricle



\*A branch of the posterior part of the second cervical nerve.

\*Supplies the skin over the back of the scalp as far forward as the vertex

\*both are branches of ophthalmic division of the trigeminal nerve

\*both supply the scalp as far backward as the vertex

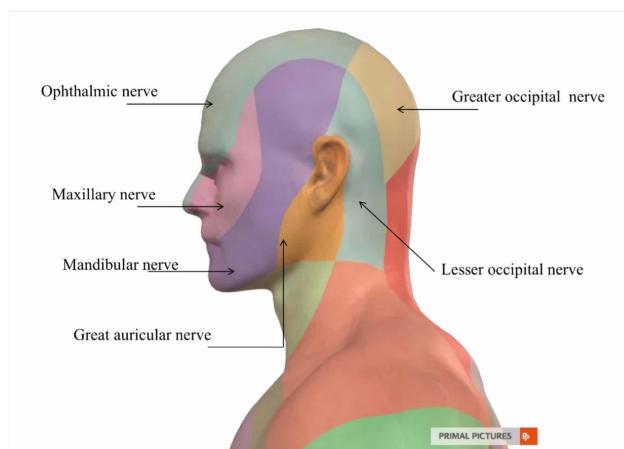
\* They are branches of frontal nerve

Supraorbital-->passes through supraorbital foramen and ascends over the forehead

Supratrochlear-->wind around the superior orbital margin and ascends over the forehead close to the median plane

\*A branch of the cervical plexus.

\*Supplies the skin over the lateral part of the scalp behind the auricle



## Blood supply of th scalp

common carotid artery  $\left\{ \begin{array}{l} \text{left} \rightarrow \text{From the arch of the aorta} \\ \text{right} \rightarrow \text{From Brachiocephalic artery} \end{array} \right.$

Begins  $\rightarrow$  sternoclavicular joint

end  $\rightarrow$  upper border of thyroid cartilage

Divides into:

Internal carotid artery  $\circ$

\*No branches in neck

\*enters carotid canal in the skull base

\*one of its branches is Ophthalmic artery that gives rise to two arteries that supply the scalp

1. supratrochlear artery

2. supraorbital artery

External carotid artery  $\circ$

Medial to internal carotid artery then passes backward and lateral to it

❖ Branches:

- Superior thyroid artery
- Ascending pharyngeal artery
- Lingual artery
- Facial artery
- Occipital artery
- Posterior auricular artery
- Superficial temporal artery
- Maxillary artery

These arteries supply the scalp #

passes deep to the neck of the mandible.

\*passes through supraorbital foramen

\*Ascends over the forehead in company with supraorbital nerve

\*Supplies the upper eyelid and the skin of the forehead and the scalp

\*The smaller terminal branch of the ECA

\*Ascends in front of the auricle.

\*Emerges from the upper border of parotid gland

\*crosses over the root of zygomatic arch-->pulse.

\*Divides into interior and posterior branches which supply the skin over the temporal and frontal regions.

\*Ascends over the forehead in company with supratrochlear nerve

\*supplies the upper eyelid and the skin of the forehead and the scalp.

\*Supplies the skin over the back of the scalp and reaches as high as the vertex

\*\*ascends behind the auricle to supply the lateral part of the scalp behind the auricle

