

Musculoskeletal system

By Odai Al-refai

- *Corrector By: Mohammed rababa'h
Tasnim alabdulhameed*

Anatomy

- *Which of the followings is NOT considered a content of infratemporal fossa:*
- *A. Otic ganglion*
- *B. Chorda tympani*
- *C. Greater petrosal nerve*
- *D. Pterygoid venous plexus*
- *E. Pterygoid muscles*

- *Answer: C*

- *All the followings are considered branches of the second part of maxillary artery EXCEPT:*
- *A. Deep temporal arteries*
- *B. Masseteric artery*
- *C. Buccal artery*
- *D. Pterygoid branches*
- *E. Middle meningeal artery*

- *Answer: E*

- *Choose the CORRECT statement regarding optic disc:*
- *A. It is more nasally compared to macula lutea*
- *B. It has the highest concentration of rods*
- *C. It is relatively avascular*
- *D. It has a diffuse margin*
- *E. It contains fovea centralis*

- *Answer: A*

- *Parasympathetic innervation to the head, choose the CORRECT statement:*
- *A. Ciliary ganglion receives its preganglionic parasympathetic fibers from nasociliary nerve*
- *B. Preganglionic parasympathetic fibers in facial nerve end in two different ganglia*
- *C. Submandibular ganglion receives preganglionic parasympathetic fibers from glossopharyngeal nerve*
- *D. Preganglionic parasympathetic fibers of lesser petrosal nerve synapse in pterygopalatine ganglion*
- *E. Ciliary ganglion sends postganglionic parasympathetic fibers to the radial muscle of the iris*

- *Answer: B*

- *All the following muscles are supplied by ansa cervicalis EXCEPT:*
- *A. Sternohyoid*
- *B. Sternothyroid*
- *C. Superior belly of omohyoid*
- *D. Inferior belly of omohyoid*
- *E. Thyrohyoid*

- *Answer: E (important)*

- *Contents of the neck triangles, choose the WRONG match:*
- *A. Internal jugular vein: carotid triangle*
- *B. Ansa cervicalis: muscular triangle*
- *C. Spinal accessory: posterior triangle*
- *D. Subclavian vessels: supraclavicular triangle*
- *E. Facial vessels: submandibular triangle*

- *Answer: B*

- *Cell bodies of motor neurons supplying the green highlighted structure lie in which ganglion:*
- *A. Trigeminal*
- *B. Ciliary*
- *C. Pterygopalatine*
- *D. Geniculate*
- *E. Otic*

- *Answer: B*



- *The carotid sheath and its contents may be safely retracted as a unit during surgical procedures of the neck. The contents of the carotid sheath include all of the following structures EXCEPT:*
- *A. External carotid artery*
- *B. Internal jugular vein*
- *C. Carotid plexus*
- *D. Deep cervical lymph nodes*
- *E. Tenth cranial nerve*

- *Answer: A*

- *Which of the following muscles receives its motor supply by 2 cranial nerves:*
- *A. Trapezius*
- *B. Thyrohyoid*
- *C. Omohyoid*
- *D. Digastric*
- *E. Buccinator*

- *Answer: D*

- *Sternocleidomastoid, choose the WRONG statement:*
- *A. It is crossed superficially by the external jugular vein*
- *B. Contraction of one muscle rotates the head to the opposite side*
- *C. Has two heads of origin*
- *D. It is paralyzed when spinal accessory is severed in the posterior triangle*
- *E. It is enclosed by the investing fascia*

- *Answer: D*

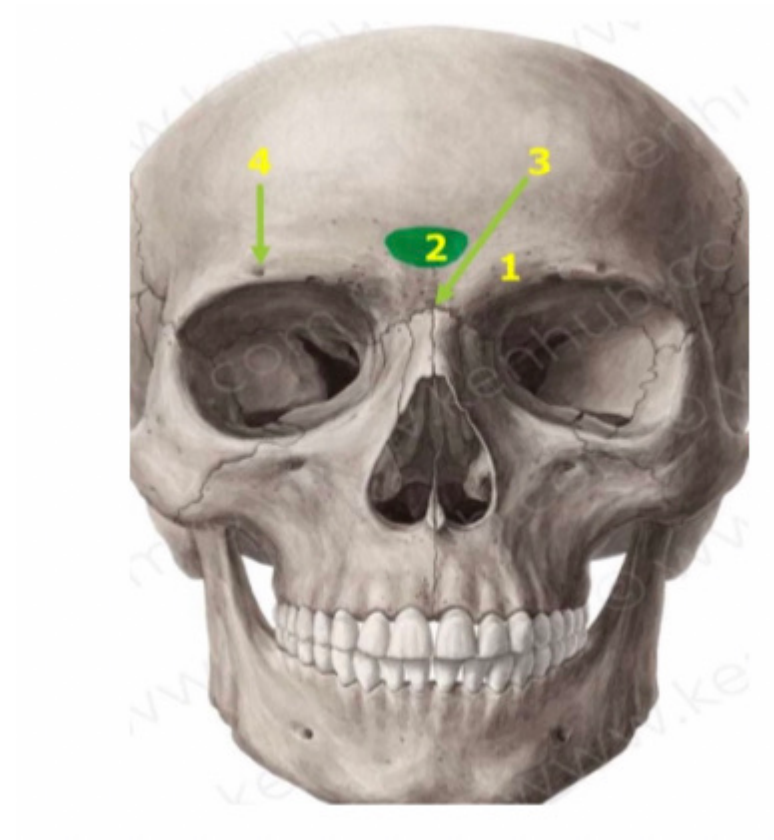
- *What pass through the pointed structure:*
- *A. Mental nerve*
- *B. Facial nerve*
- *C. Anterior alveolar nerve*
- *D. Hypoglossal nerve*
- *E. Lesser palatine nerve*

- *Answer: A*



- *Which nerve pass through fourth structure:*
- *A. Glossopharyngeal nerve*
- *B. Facial nerve*
- *C. Supraorbital nerve*
- *D. Zygomaticotemporal nerve*
- *E. Buccal nerve*

- *Answer: C*



- *Regarding muscles of the anterior triangle, choose the wrong statement:*
- *A. inferior belly of the omohyoid muscle makes the anterior inferior border of carotid triangles*
- *B. Sternohyoid, sternothyroid, muscles forms the floor of muscular triangle*
- *C. Mylohyoid and hyoglossus muscles may elevate the hyoid bone*
- *D. Posterior belly of digastric muscle is attached to the mastoid process*
- *E. Omohyoid muscle is supplied by ansa cervicalis*

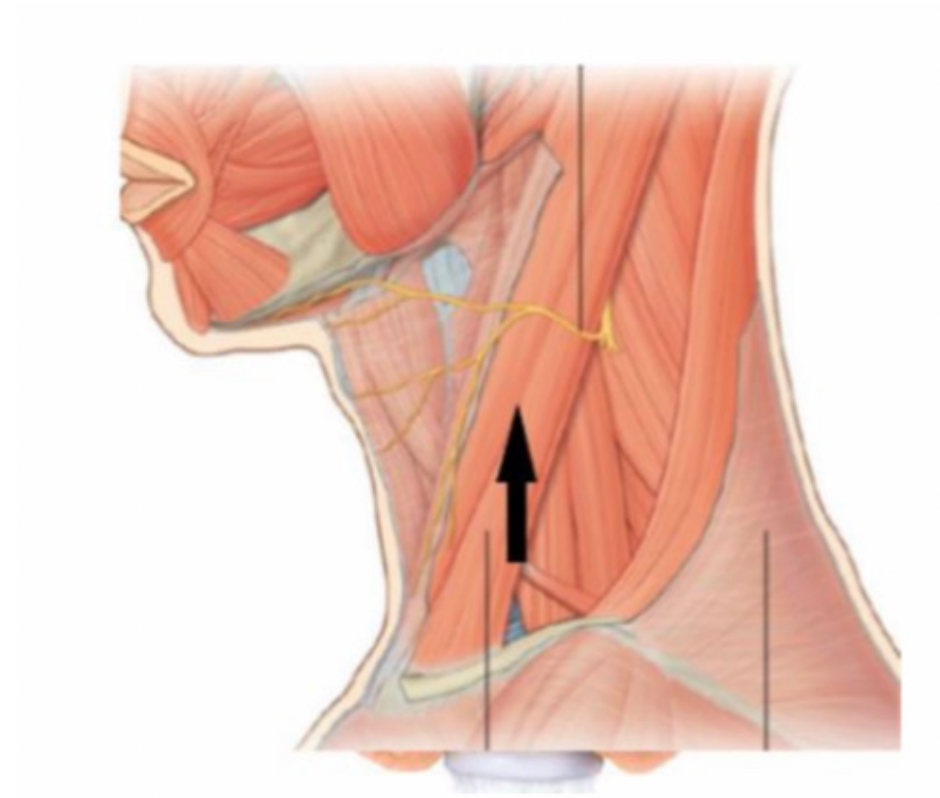
- *Answer: A*

- *All of the following are contents of the Digastric triangle EXCEPT:*
- *A. Superior thyroid artery*
- *B. facial artery*
- *C. submandibular LN*
- *D. Submandibular gland*
- *E. facial vein*

- *Answer: A*

- *The nerve supply of pointed muscle is:*
- *A. Hypoglossal nerve*
- *B. Spinal root of accessory nerve*
- *C. Ansa cervicalis*
- *D. Cranial root of accessory nerve*
- *E. Vagus nerve*

- *Answer: B*



- *The pointed structure is by the narrow:*
- *A. coronoid process*
- *B. neck of the mandible*
- *C. condylar process*
- *D. mental protuberance*
- *E. head of the mandible*

- *Answer: A*



- *The pterygoid venous plexus is drained by:*
- *A. inferior ophthalmic vein*
- *B. anterior facial vein*
- *C. pharyngeal venous plexus*
- *D. maxillary vein*
- *E. cavernous sinus*

- *Answer: D*

- *Middle ear, choose the WRONG match:*
- *A. Medial wall: horizontal part of facial canal*
- *B. Floor: internal jugular vein*
- *C. Roof: tegmen tympani*
- *D. Anterior wall: tympanic plexus*
- *E. Posterior wall: origin of chorda tympani*

- *Answer: D*

- *All the followings are branches of external carotid artery EXCEPT:*
- *A. Posterior auricular artery*
- *B. Superficial temporal artery*
- *C. Facial artery*
- *D. Supraorbital artery*
- *E. Maxillary artery*

- *Answer: D*

- *Cutaneous innervation the auricle is derived from:*
- *A. Auriculotemporal nerve*
- *B. Great auricular nerve*
- *C. Lesser occipital nerve*
- *D. All of the mentioned*
- *E. Vagus nerve*

- *Answer: D*

- *The posterior belly of digastric is supplied by:*
- *A. Glossopharyngeal*
- *B. Vagus*
- *C. Mandibular*
- *D. Facial*
- *E. Maxillary*

- *Answer: D*

- *Which of the following muscle depresses and protrudes the mandible:*
- *A. Temporalis*
- *B. Buccinator*
- *C. Lateral pterygoid*
- *D. Medial pterygoid*
- *E. Masseter*

- *Answer: C*

- *A lesion causing compression of the facial nerve at the internal acoustic meatus will cause ipsilateral:*
- *A. Paralysis of the facial muscles*
- *B. Paralysis of the facial muscles, a decreased salivation, loss of taste and lacrimation*
- *C. Paralysis of the facial muscles, increased salivation, loss of taste and lacrimation*
- *D. Paralysis of the facial muscles and loss of taste*
- *E. Paralysis of the facial muscles, loss of taste and lacrimation*

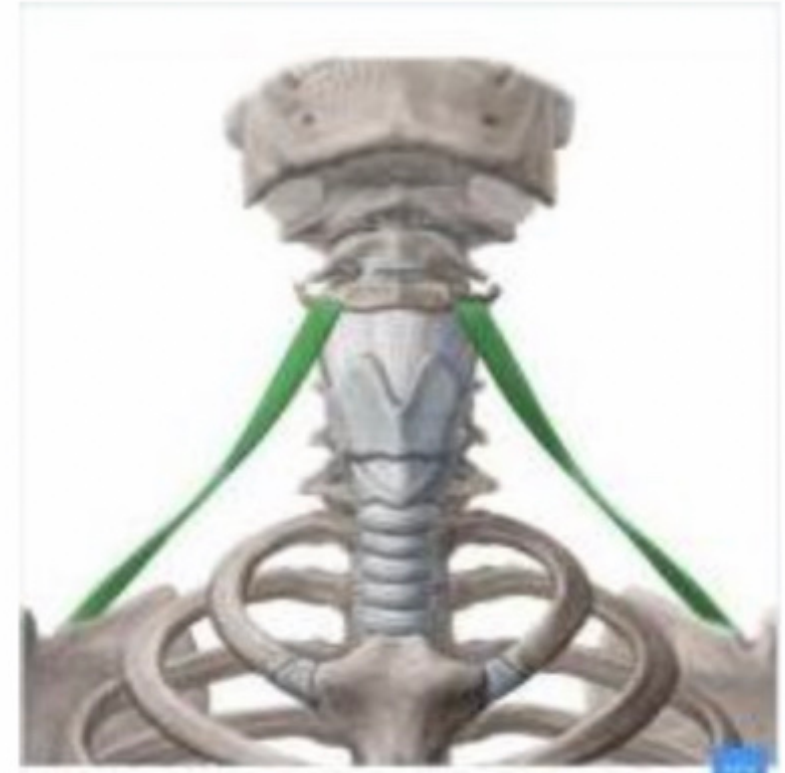
- *Answer: B*

- *Which of the following retinal layers contains the nuclei of the bipolar cells, amacrine cells, horizontal cells, and Muller cells:*
- *A. Rod and cone layer*
- *B. Outer limiting layer*
- *C. Outer nuclear layer*
- *D. Inner nuclear layer*
- *E. Outer plexiform layer*

- *Answer: D*

- *Choose the WRONG statement regarding this muscle:*
- *A. It is supplied by ansa cervicalis*
- *B. Its superior belly separates muscular and carotid triangles*
- *C. None of the mentioned*
- *D. Its inferior belly is located in the posterior triangle of the neck*
- *E. It is one of infrahyoid muscles and has two bellies*

- *Answer: C*



- *Identify the green highlighted layer:*
- *A. Outer nuclear layer*
- *B. Inner nuclear*
- *C. Outer plexiform*
- *D. Photoreceptor layer*
- *E. Retinal pigment epithelium*

- *Answer: D*



- *Which retinal layer contains cell bodies of rods and cones:*
- *Answer: **Outer nuclear layer***

- Choose the *WRONG* match:
- A. 4 is located between the floor and the lateral wall
- B. 1 is the orbital plate of frontal bone
- C. 2 is the lacrimal bone
- D. 5 is the orbital plate of zygomatic bone
- E. 3 transmits anterior ethmoidal nerve and vessels

- Answer: D



- *Which of the following depresses mandible or elevates hyoid bone:*

- *Answer: Posterior belly of digastric*

- *Wrong about the cornea:*

- *Answer: descemet's membrane is the membrane under the stratified epithelium layer*

- *All are correct about muscles of mastication except:*
- *Answer: fibers of medial pterygoid muscle are oriented almost horizontally*

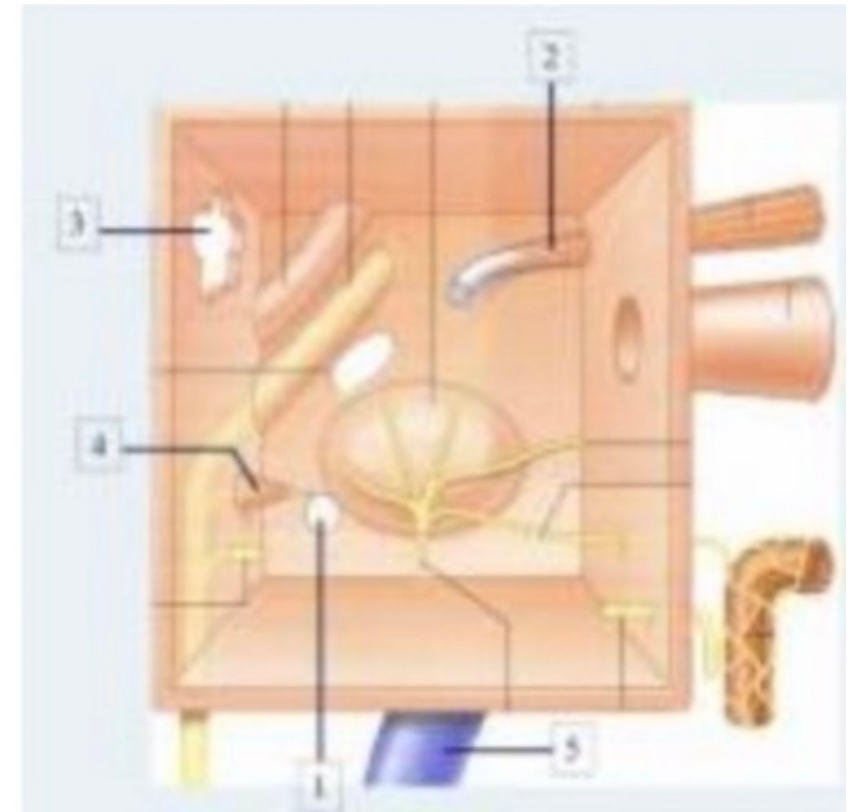
- *True about the muscles of the neck:*
- *Answer: Branches of the mandibular nerve supply two suprahyoid muscles*

- *Paralysis of the green highlighted muscle would most probably result in:*
- *A. Inability to rotate the eyeballs laterally*
- *B. Double vision*
- *C. Inability to elevate the upper eyelids*
- *D. Inability to close the eyes*
- *E. Inability to elevate the eyebrows*

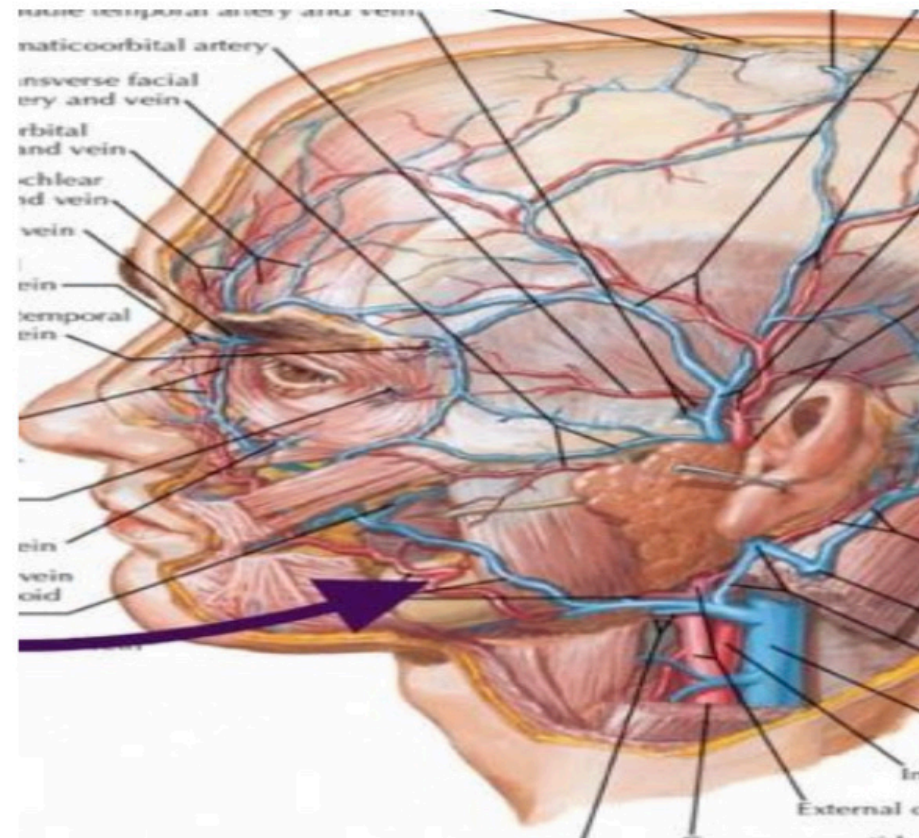
- *Answer: D*



- Choose the *WRONG* match:
 - A. A muscle supplied by mandibular nerve: 2
 - B. Round window in the medial wall: 1
 - C. External jugular vein: 5
 - D. Aditus to mastoid: 3
 - E. A muscle supplied by facial nerve: 4
-
- Answer: C



- *The purple arrow refers to:*
- *Answer: **facial artery***



- *The muscle supplies by C1:*
 - *A. Geniohyoid*
 - *B. Mylohyoid*
 - *C. Thyrohyoid*
 - *D. Stylohyoid*
 - *E. A+C*
-
- *Answer: E*

- *Which of the following nerve contains postganglionic parasympathetic fibers:*
- *Answer: auriculotemporal nerve*

- *A branch from cervical plexus:*
- *Answer: lesser occipital nerve*

- *Regarding the two muscles of the middle ear, choose the wrong statement:*
- *A. Both muscles are derived from the first and second pharyngeal arches*
- *B. tensor tympani muscle is related to the anterior wall*
- *C. stapedius muscle is related to the posterior wall*
- *D. tensor tympani muscle dampens down vibration of the secondary tympanic membrane .*
- *E. Stapedius muscle dampens down vibration of stapes*

- *Answer: D*

- *Which of the following is wrong regarding lymph drainage of The neck:*
- *A. Deep cervical lymph nodes drain only from the neck*
- *B. Superficial cervical nodes are superficial to sternocleidomastoid Muscle*
- *C. The intermediate tendon of omohyoid divides deep cervical nodes Into*
- *upper and lower groups*
- *D. The jugulo-omohyoid node receives drainage from the tongue*

- *Answer: A*

- *About ear anatomy, which is wrong:*
- *Answer: upon the examination of normal tympanic membrane using an Otoscope, the cone of light is directed anterosuperior*

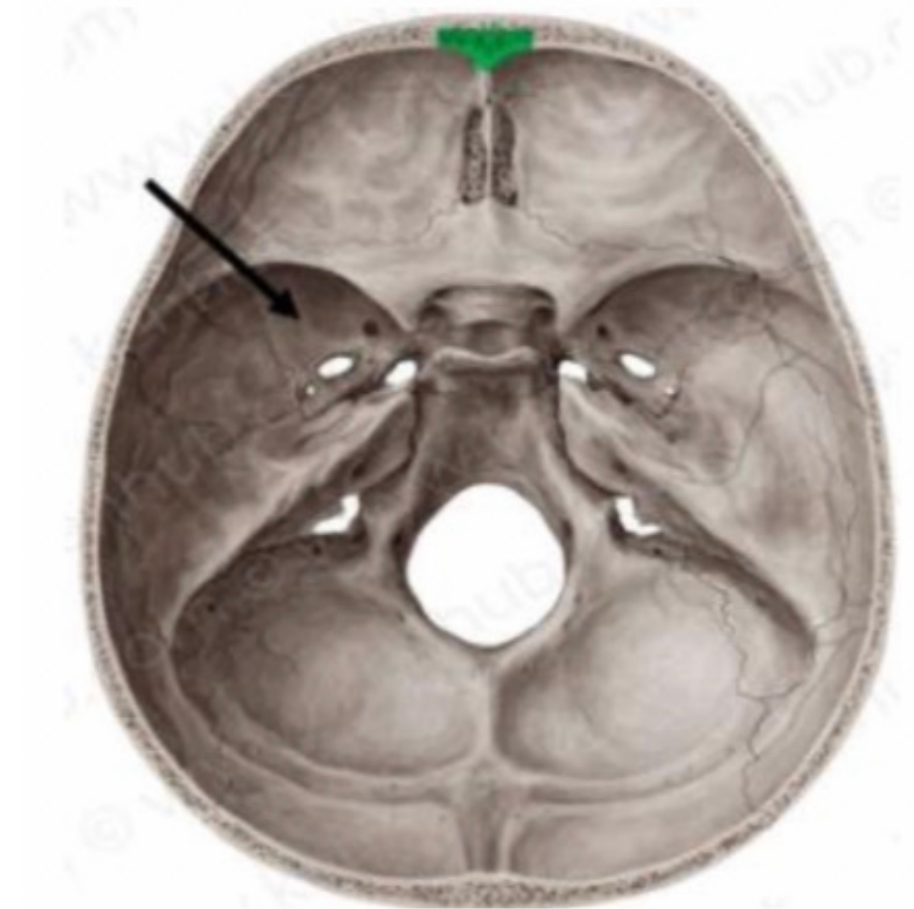
- *A stab wound in the posterior triangle on the neck can lead to:*
- *Answer: drop of shoulder*

- *The roof of the infratemporal fossa is formed by:*
- *Answer: the greater wing of sphenoid bone*

- *Wrong about the ciliary muscle:*
- *Answer: Contraction of the ciliary muscle increases the tension in the Suspensory ligament*

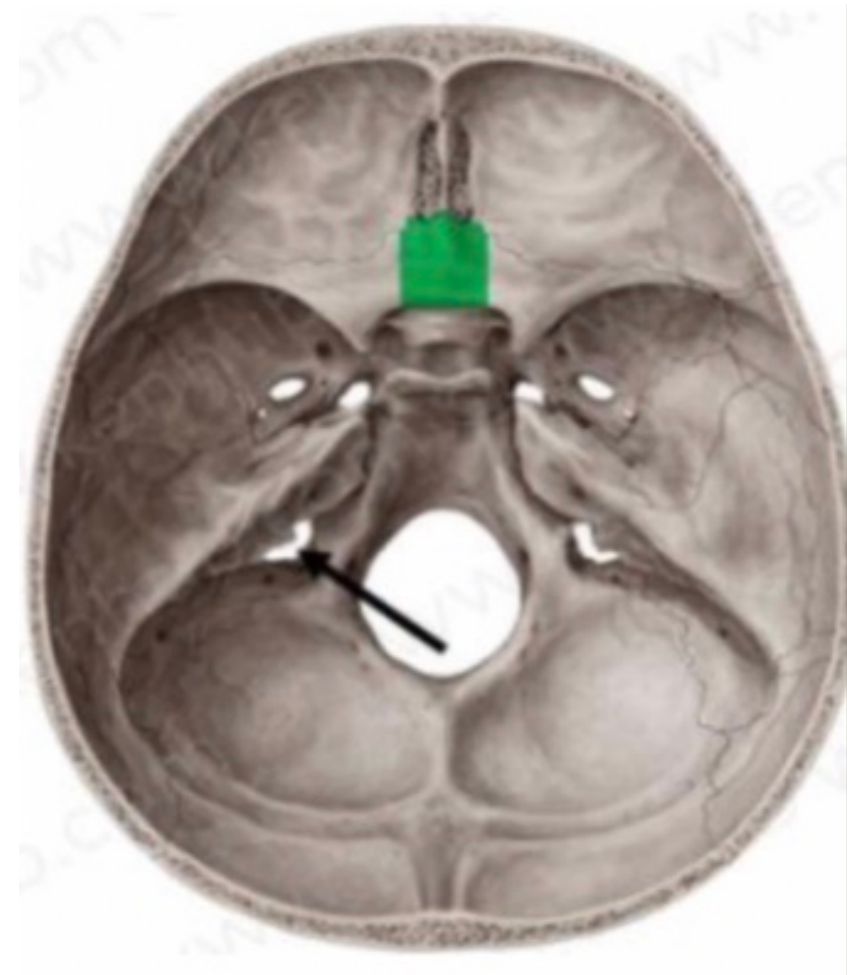
- *The pointed structure is by the narrow :*
- *A. Sulcus chiasmaticus*
- *B. greater wing of sphenoid*
- *C. trigeminal impression*
- *D. anterior clinoid process*
- *E. petrous part of temporal bone*

- *Answer: B*



- *Which of the following nerves passes through the pointed foramen*
- *A. Glossopharyngeal*
- *B. maxillary*
- *C. hypoglossal*
- *D. lesser petrosal*
- *E. mandibular*

- *Answer: A*



- *What is the function of the temporalis muscle:*
- *A. Elevates and protrudes the mandible*
- *B. Elevates and retracts the mandible*
- *C. Depresses and protrudes mandible*
- *D. Depresses and retracts mandible*

- *Answer: B*

- *The following structures are contents of the carotid sheath Except:*
- *A. Common carotid artery*
- *B. Internal carotid artery*
- *C. Sympathetic trunk*
- *D. Vagus nerve*
- *E. Internal jugular vein*

- *Answer: C*

The END