

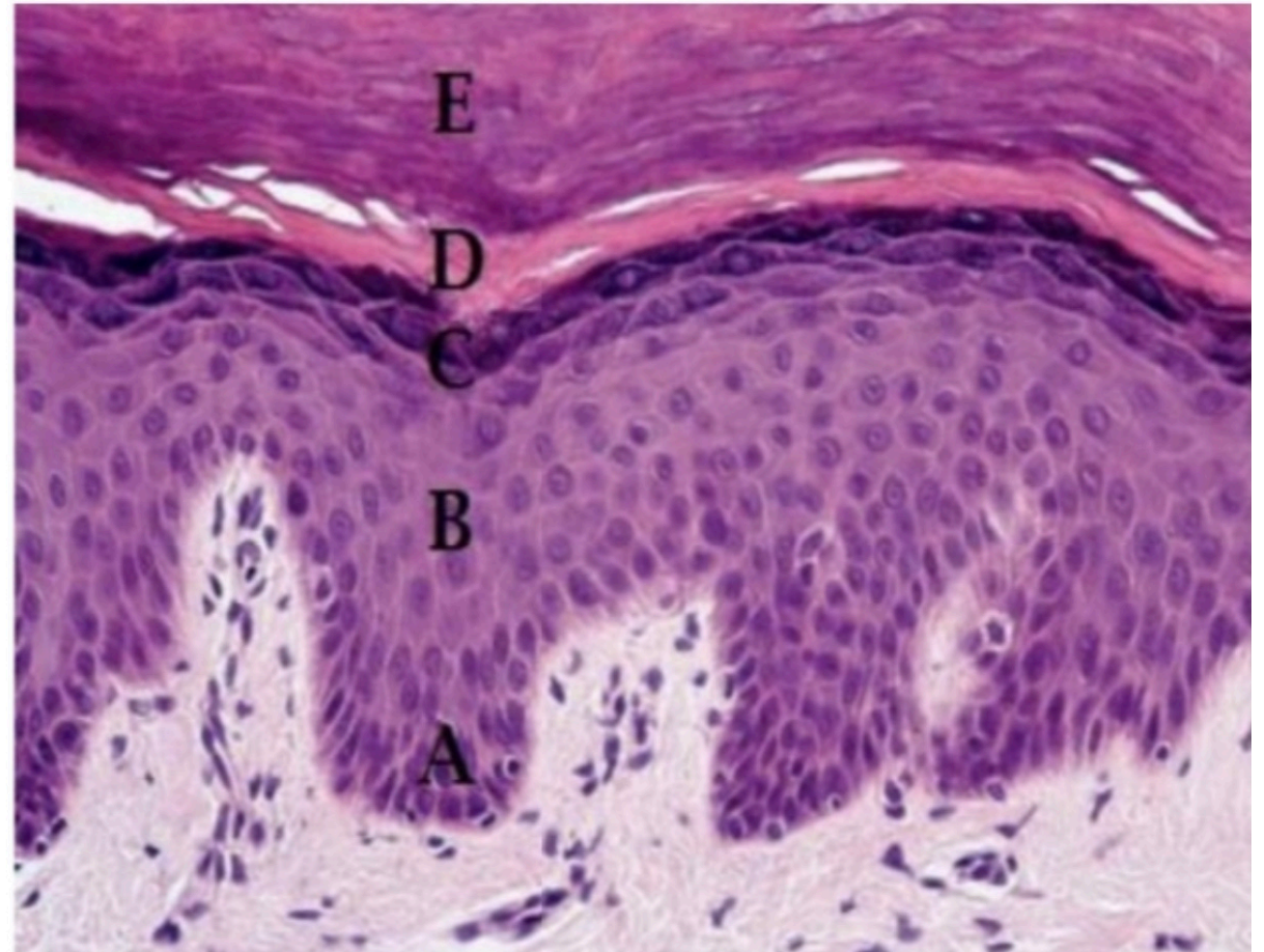
Lab by Odai Al-refai

- *Practical: Choose the WRONG match:*
- *A. Keratin: 5*
- *B. Dermal papilla: 4*
- *C. Arrector pili: 1*
- *D. Sebaceous gland: 3*
- *E. Hypodermis: 2*

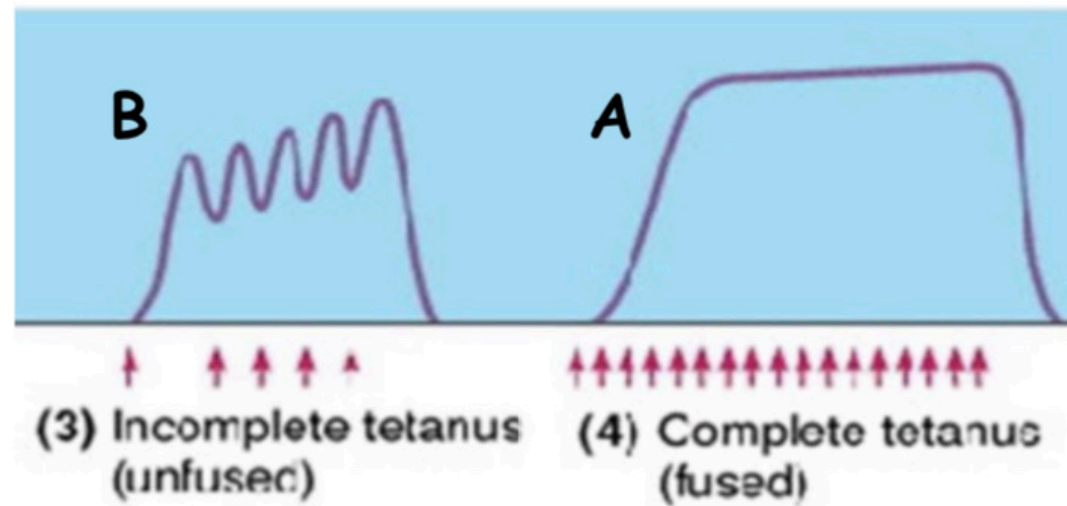
- *Answer: D*



- Name B, D respectively:
- Answer:
- *stratum spinosum*,
- *stratum lucidum*.

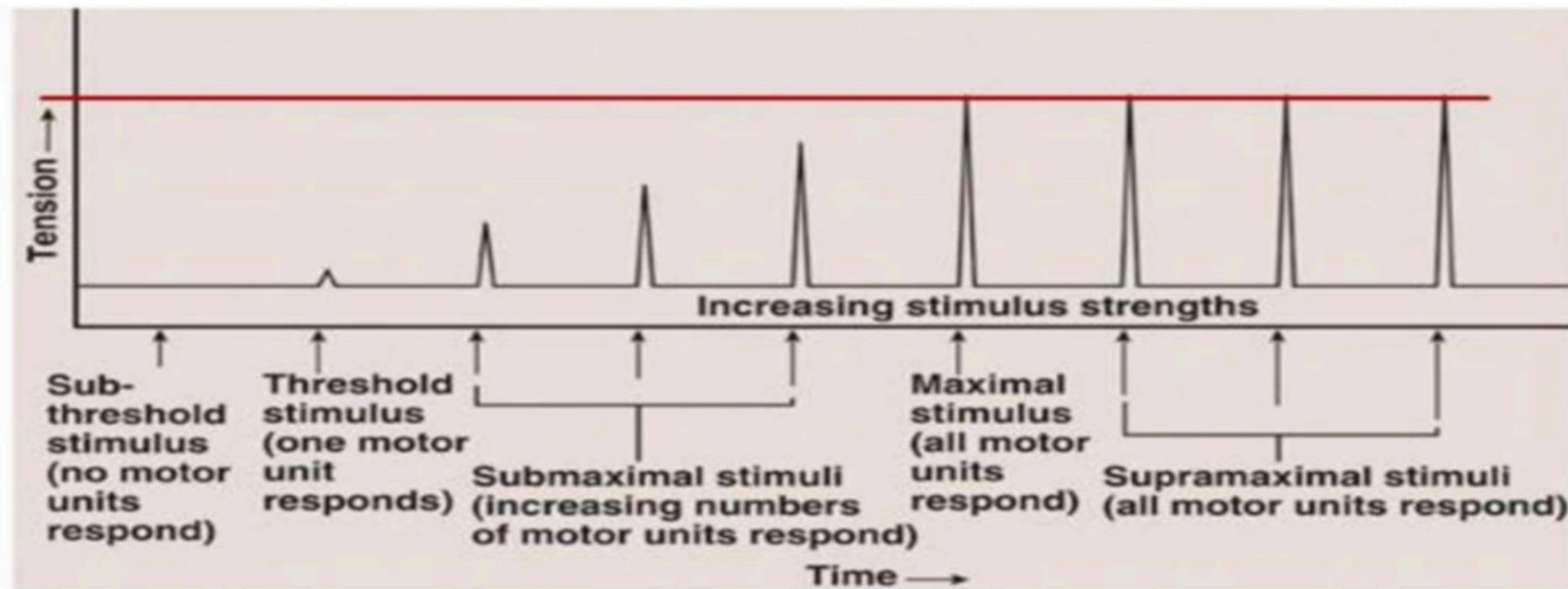


8- Which is not true:



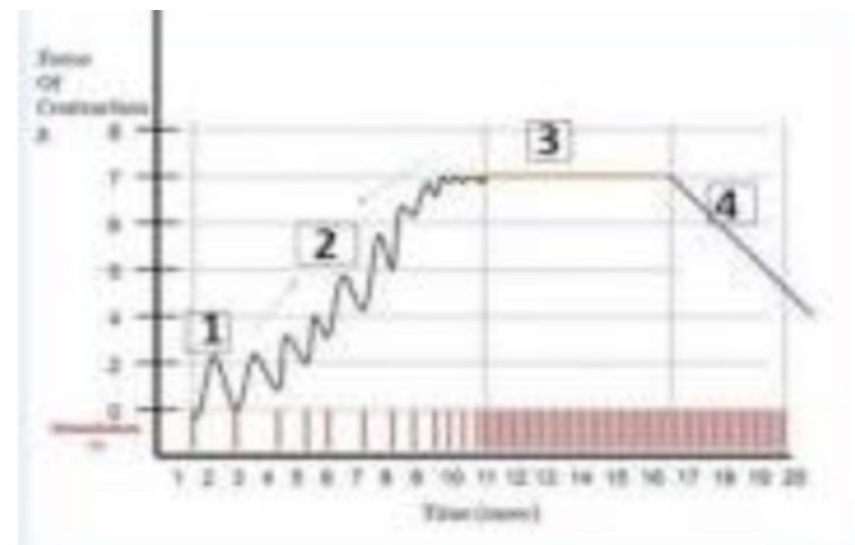
Answer: the concentration of calcium ions in the sarcoplasm of B is lower than that of A

11- Which of the following is false? (We couldn't find a picture with the same details, but this will help)



Answer: the supramaximal threshold is lower than 2 mV

- *The figure below, represents recordings of twitches by stimuli that caused contraction of all muscle filers in the preparation. Which of the following statements is TRUE with regard Flag to the recording: Time (mer)*
- *A. 4 represents complete tetanization*
- *B. 3 represents incomplete tetanization*
- *C. 2 represents motor unit summation*
- *D. 4 happens due to decreased transmission at neuromuscular junction*
- *E. In 3 lower Ca^{2+} concentration is found in the sarcoplasm than in 1*



- *Answer: D*

- *If the temperature of the solution bathing the frog's gastrocnemius muscle was changed from room temperature (25°C) to 37°C. Which of the followings is expected to happen to the recorded simple muscle twitch:*
- *A. The latent period becomes longer*
- *B. The duration of contraction period will shorten*
- *C. The duration of the muscle twitch will not be affected*
- *D. The amplitude of the contraction will decrease*
- *E. The latent period will not change*

- *Answer: B*

The END