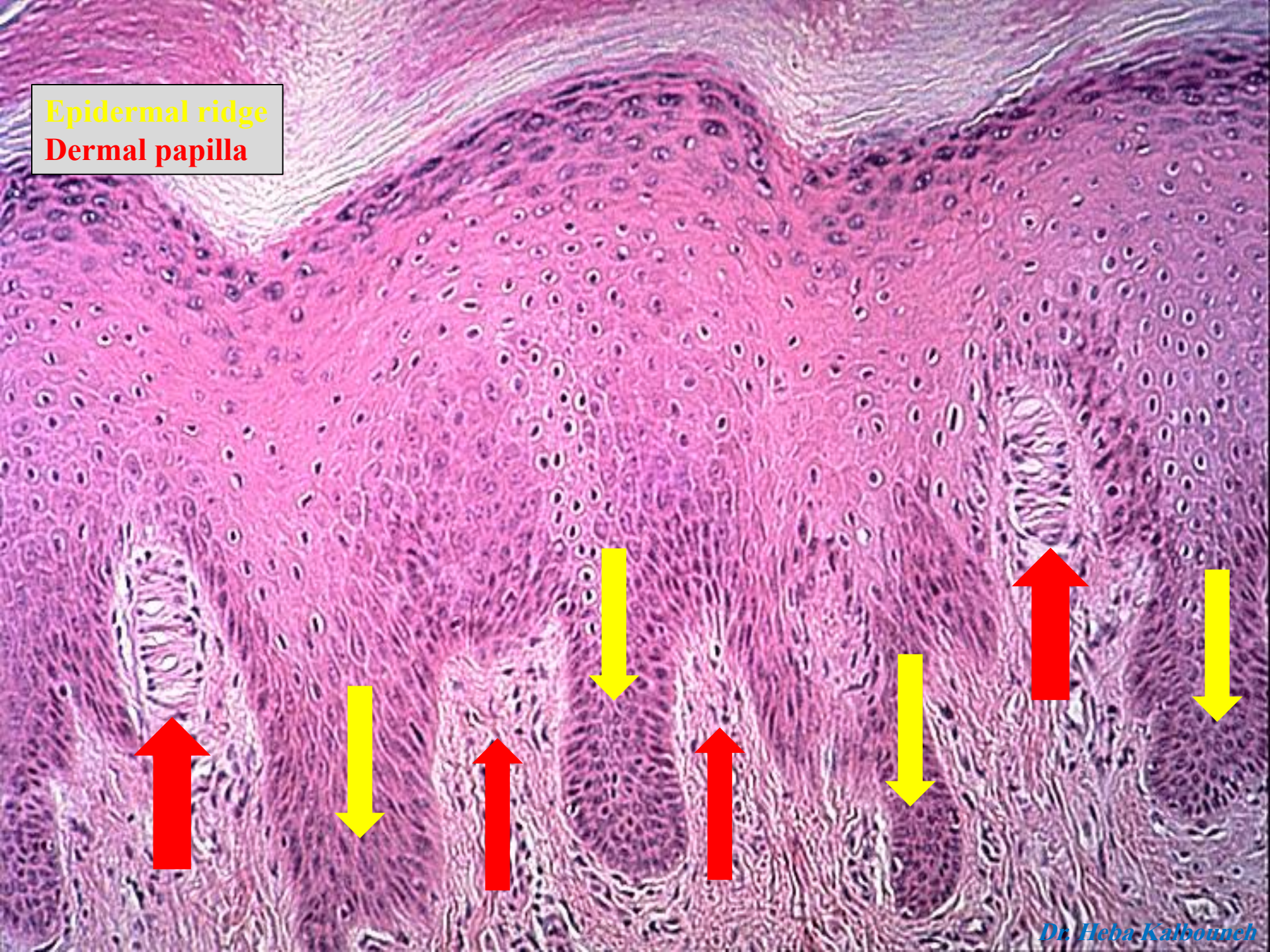
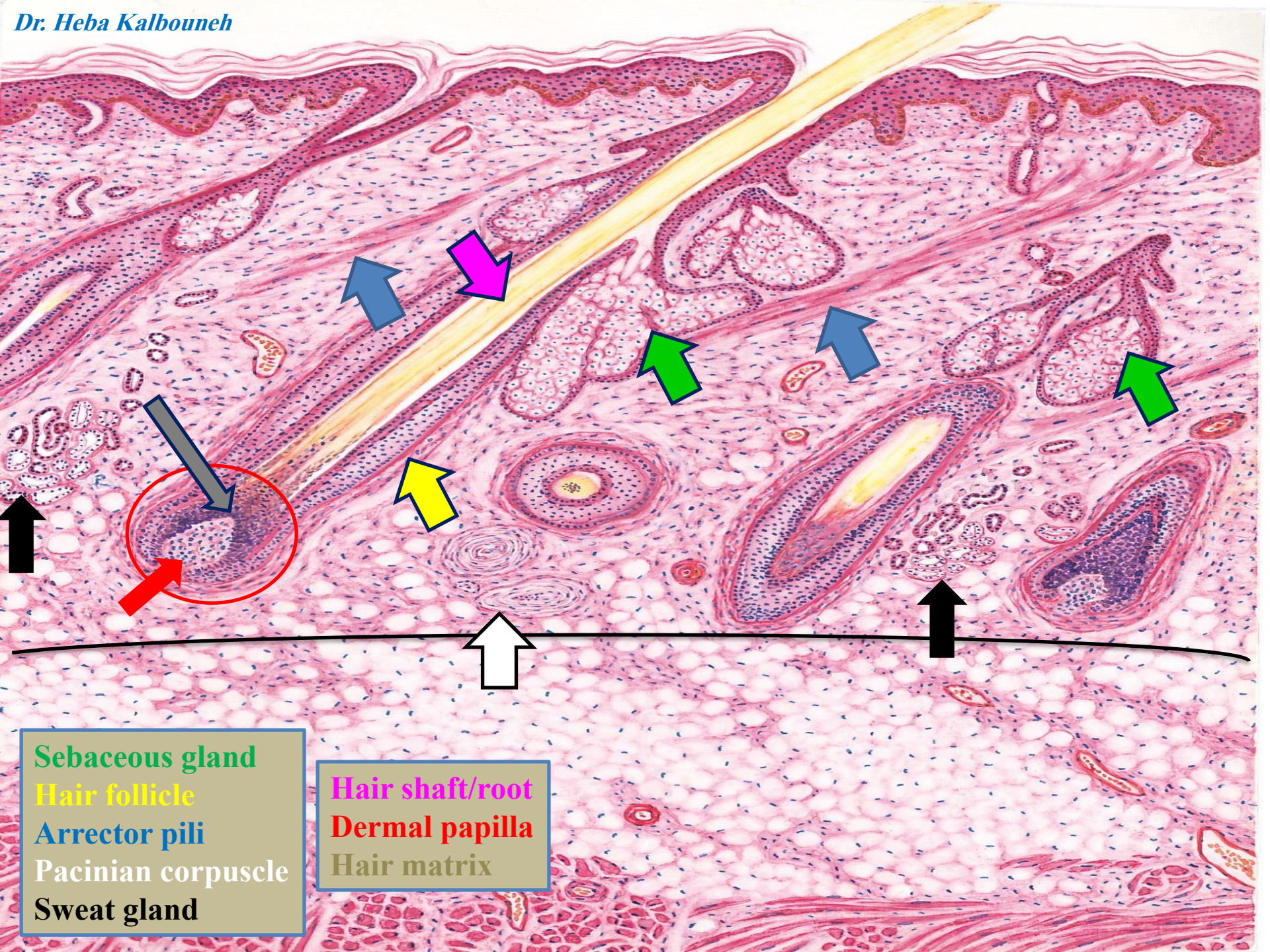


Practical sections for the exam

Epidermal ridge
Dermal papilla

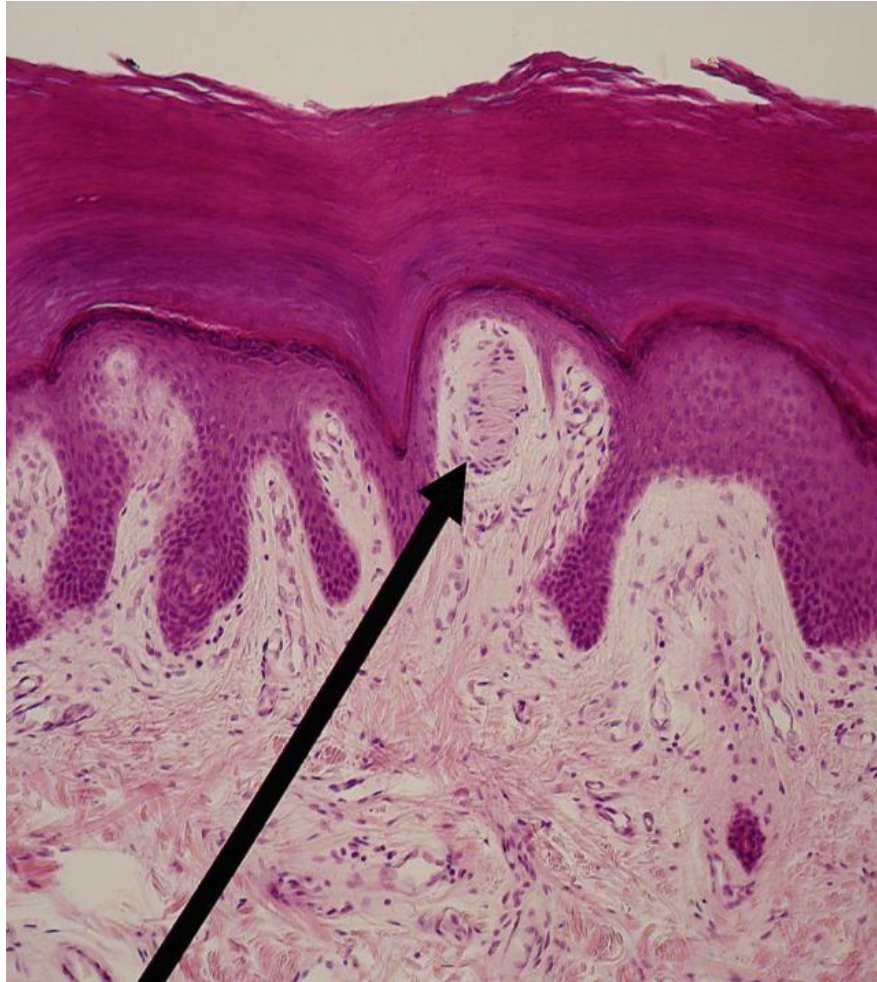




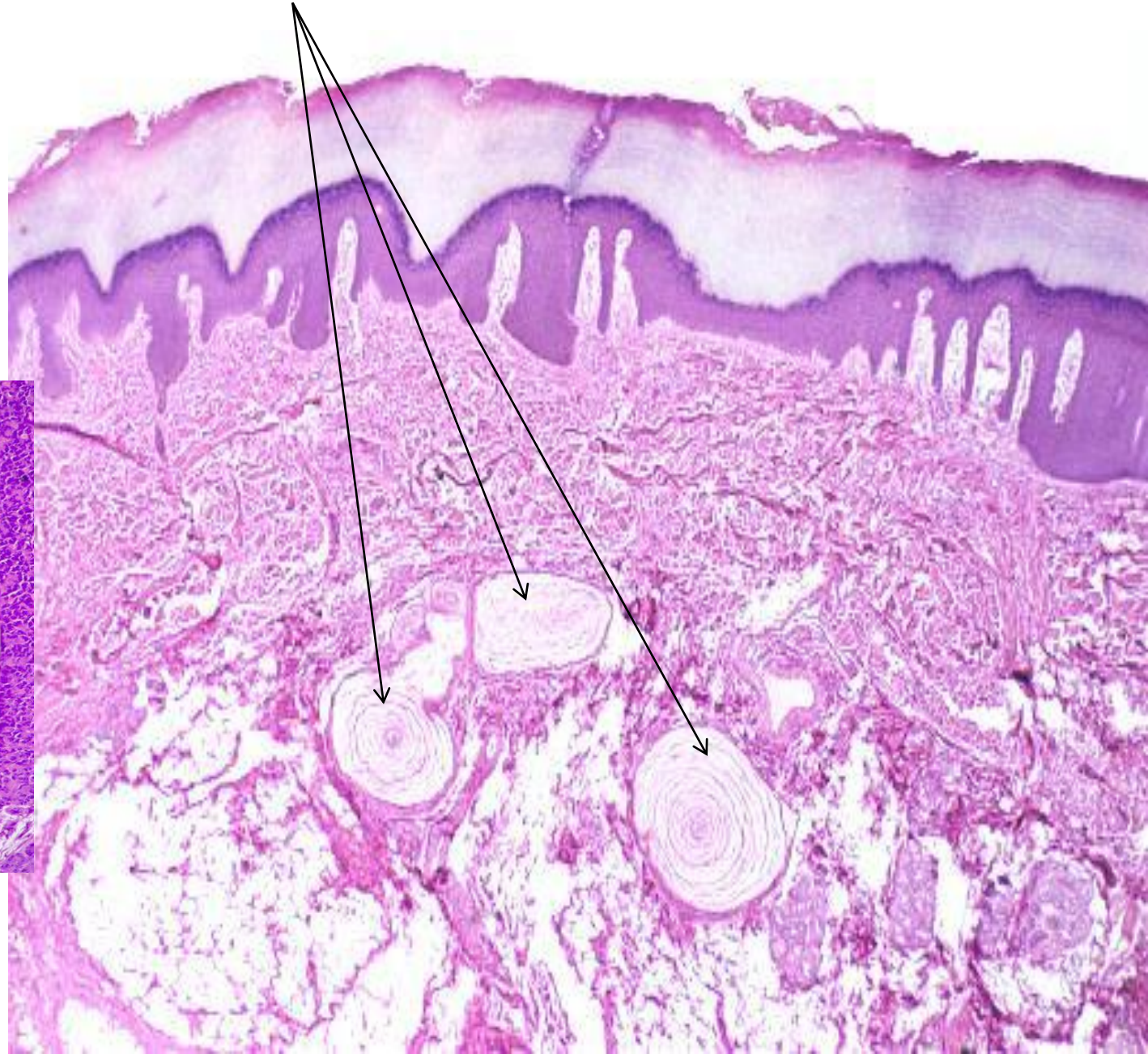
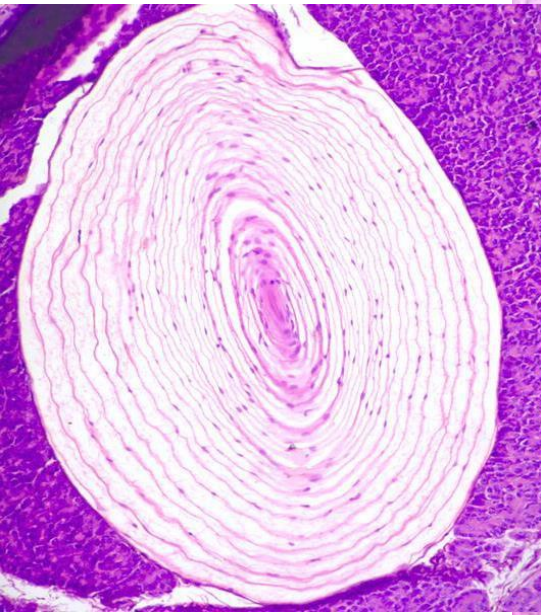
Sebaceous gland
Hair follicle
Arrector pili
Pacinian corpuscle
Sweat gland

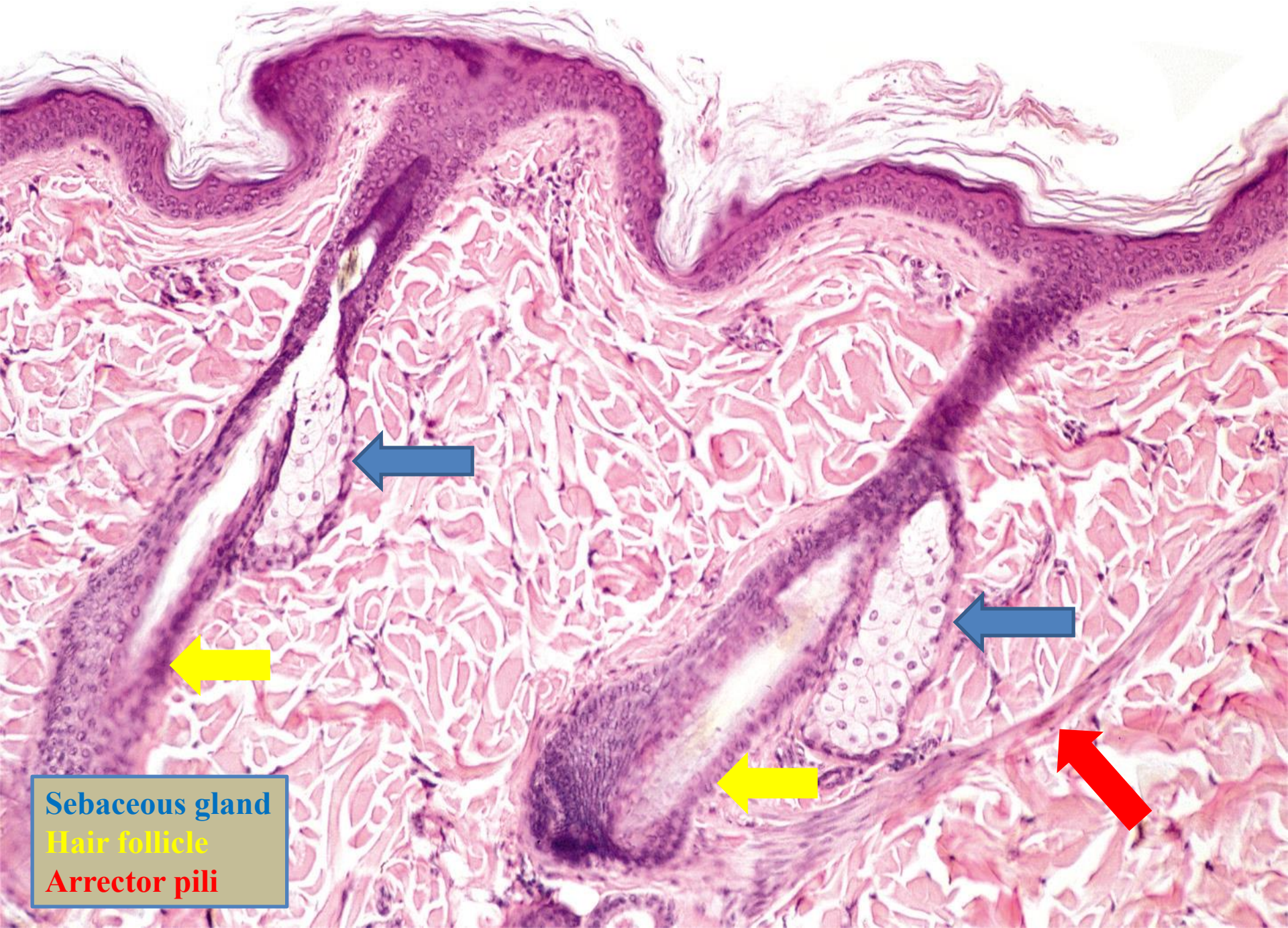
Hair shaft/root
Dermal papilla
Hair matrix

Meissner corpuscle

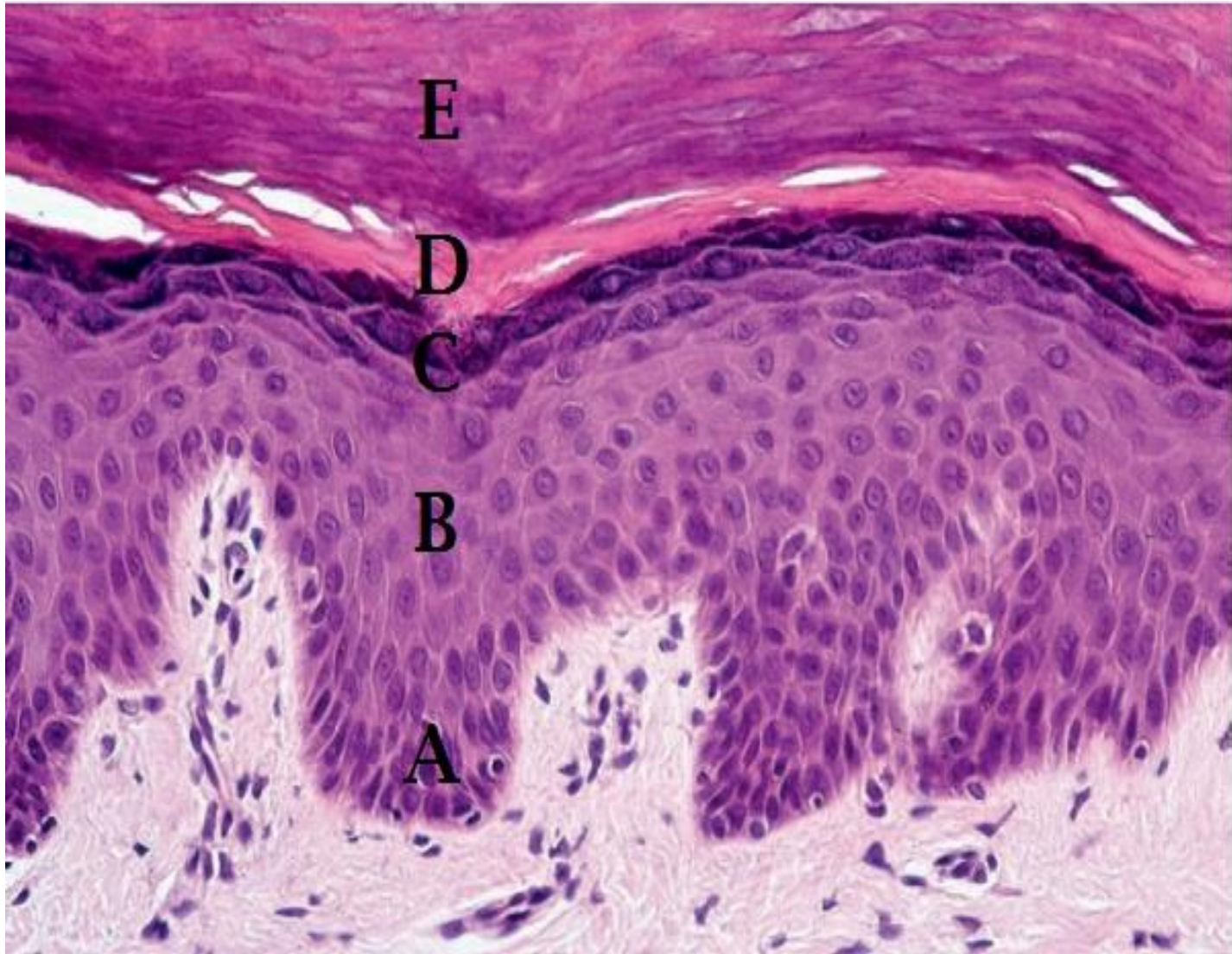


Pacinian corpuscles





Sebaceous gland
Hair follicle
Arrector pili



THICK OR THIN SKIN ????

