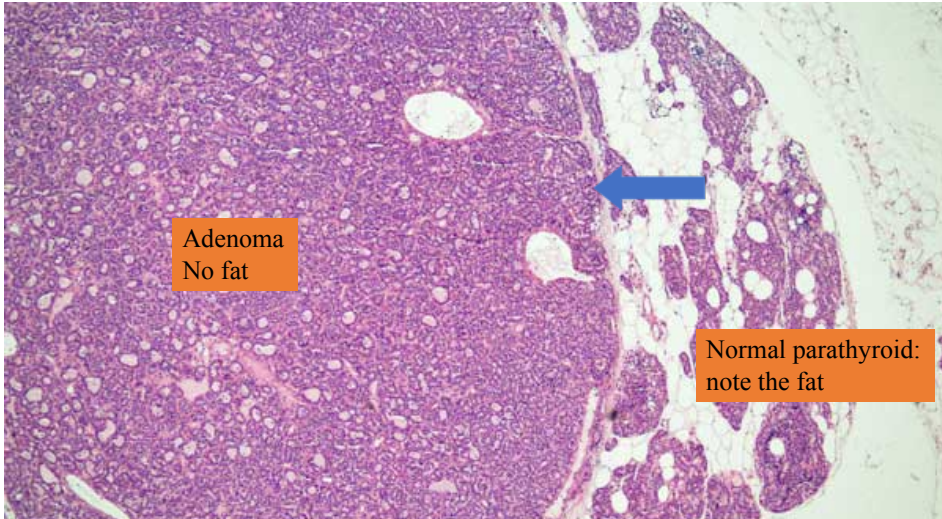


Endocrine System 2023 Lab material

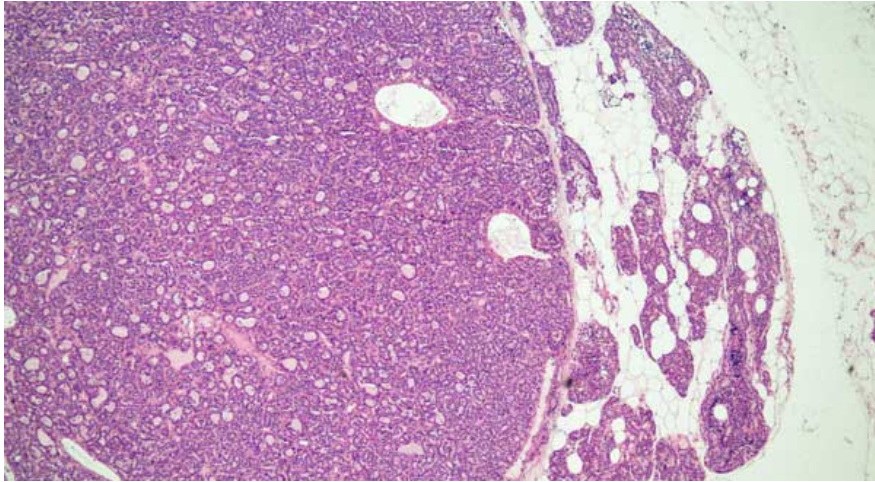
Dr Heyam Awad

- These slides were explained within the lectures.
- Study these slides only for your practical exam (regarding my material)

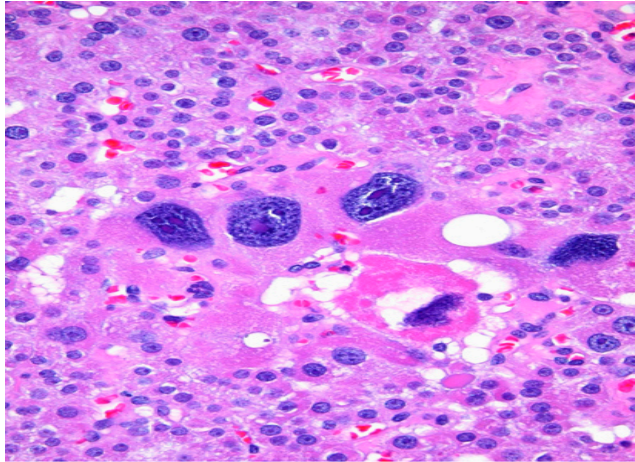
Parathyroid adenoma. Note the thin capsule(arrow) separating the adenoma from normal. Note also the fat in the normal gland. There is no fat in the adenoma.



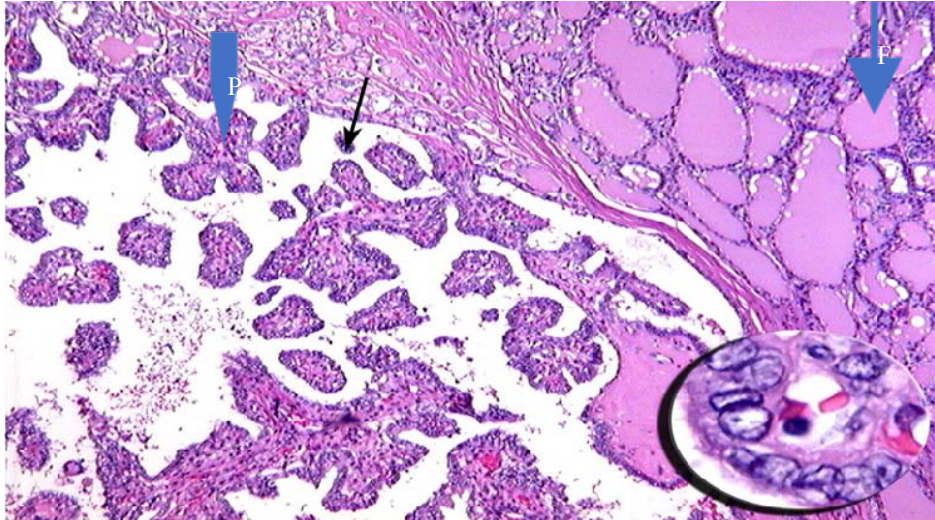
Parathyroid adenoma



Endocrine atypia.. This is not necessarily a malignant feature.



Papillae in papillary thyroid carcinoma(P).
Note the difference from the normal follicles (F)
F)

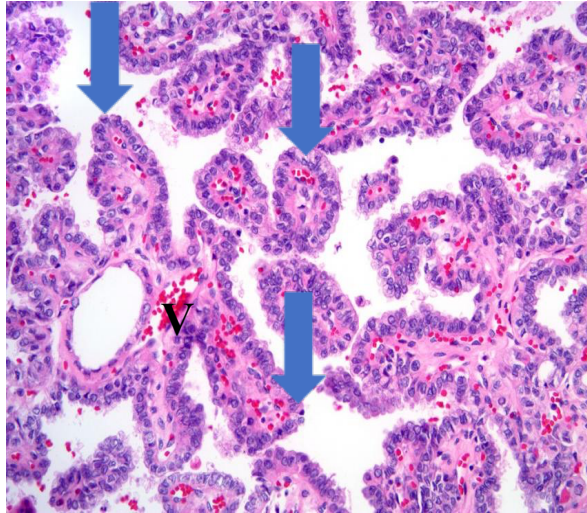


Papillae

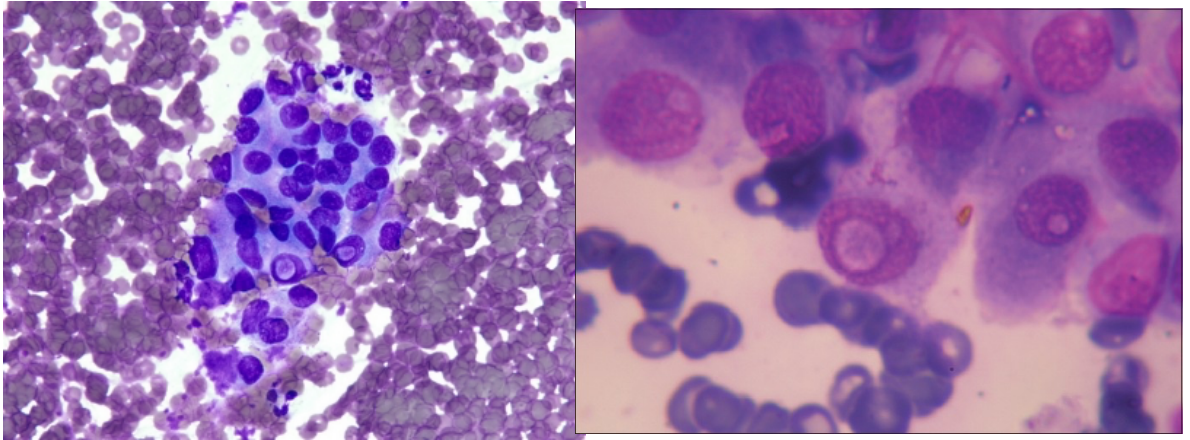
-Papillae (arrows) are finger-like projections covered by epithelial cells (the blue dots around the papillae).

-The papillae have fibro-vascular cores (central region which is fibrous and contains blood vessels (V))

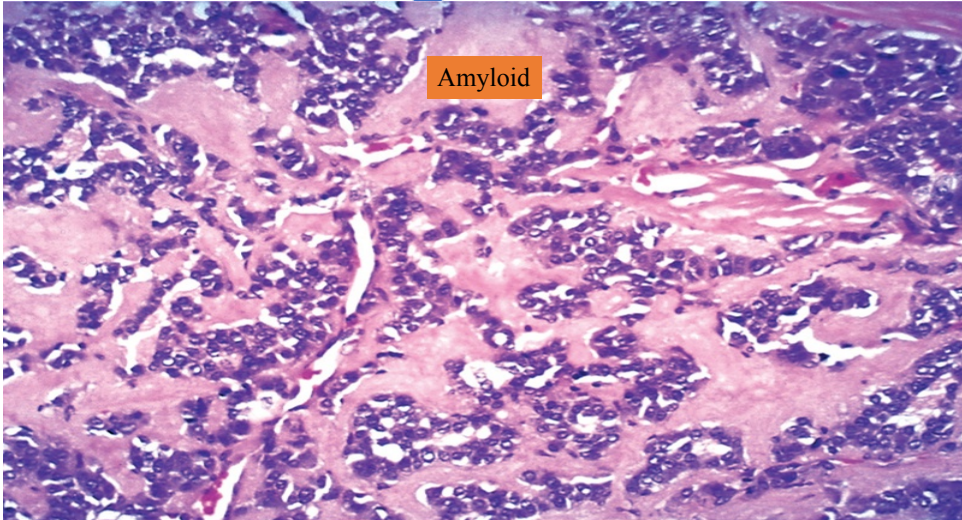
Note: all the red dots in the pic are red blood cells within the vessels.



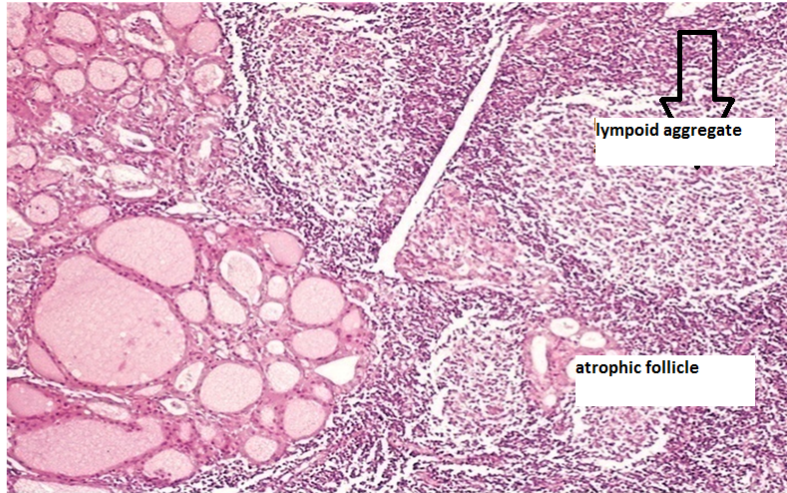
Inclusions in papillary thyroid carcinoma.



Medullary carcinoma, note the amyloid.



Hashimoto thyroiditis: lymphoid follicles and atrophic follicles



Hurthle cells in Hashimoto thyroiditis: large cells with abundant eosinophilic cytoplasm, due to increased mitochondria

