

Anatomy Lab Test Bank

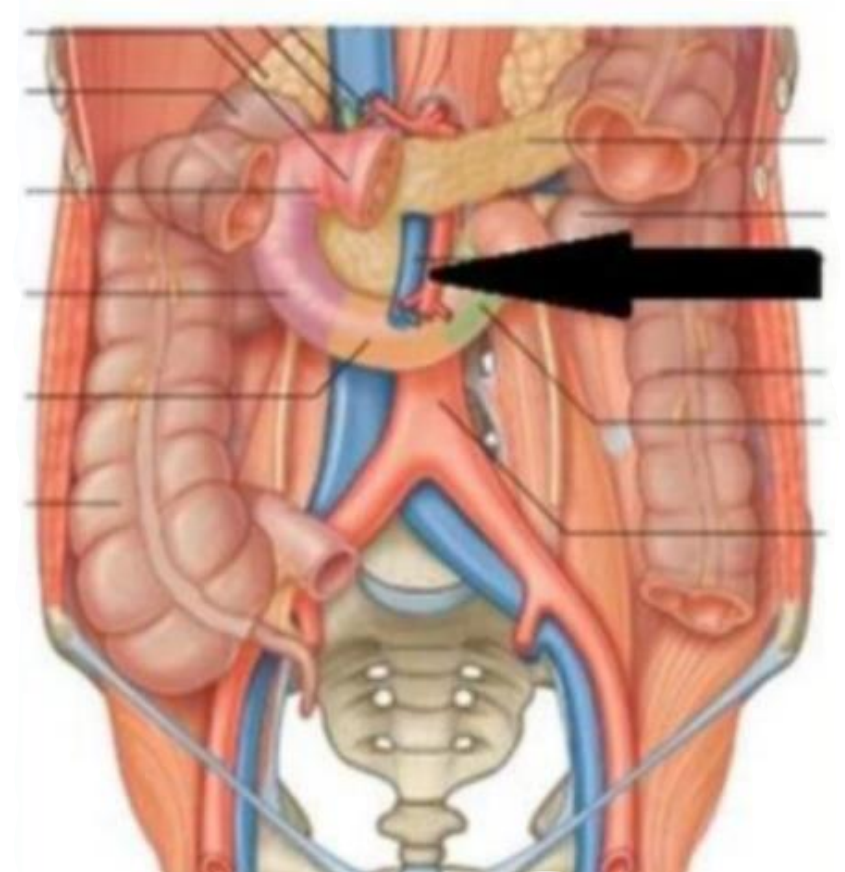
Done by: Mira Khashman

Corrected by: Salih AlQaderi

1. The pointed structure innervates all the following, except:

- A. Appendix
- B. Duodenum
- C. Pancreas
- D. Ileum
- E. Spleen

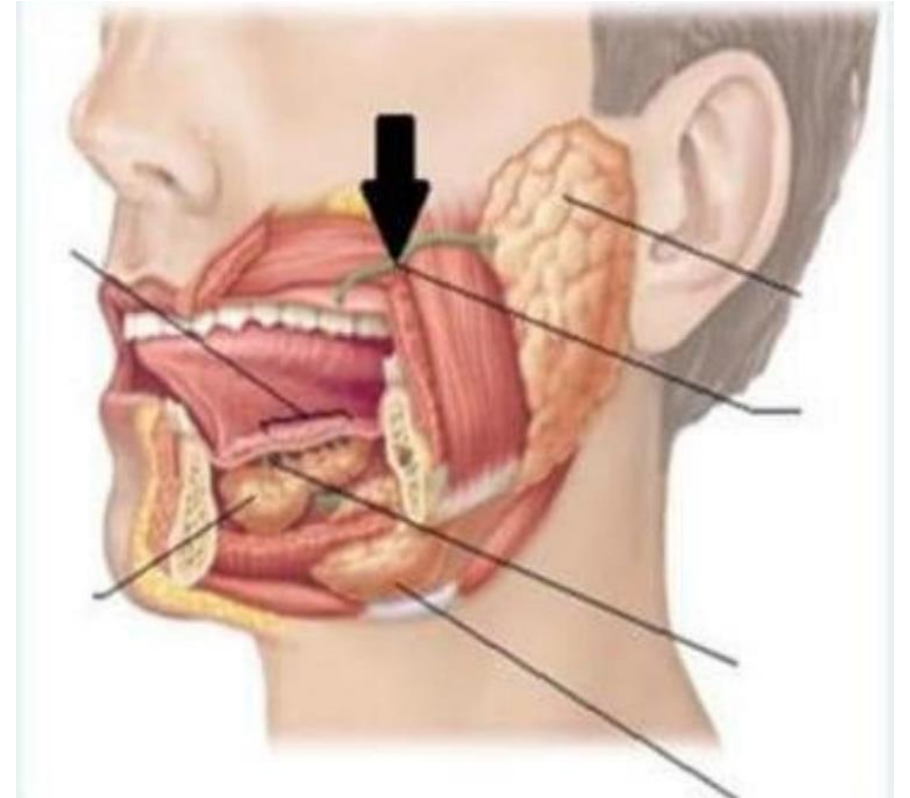
Answer: E



2. The pointed structure piercing which one of the following muscles:

- A. Lateral pterygoid
- B. Buccinator
- C. Mylohyoid
- D. Medial pterygoid
- E. Masseter

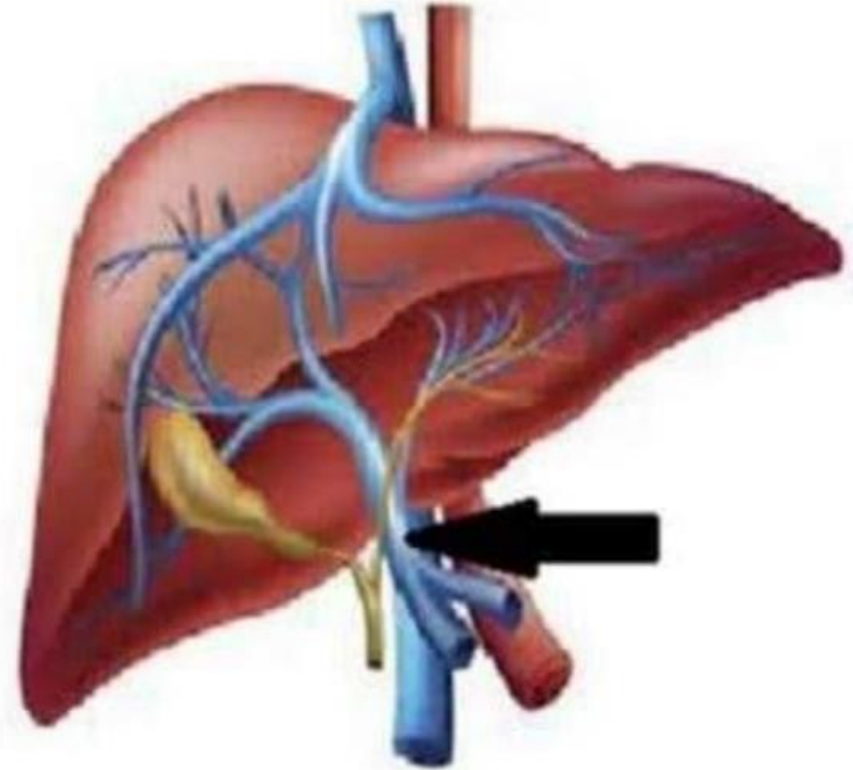
Answer: B



3. All the following organs drain into the pointed structure EXCEPT one:

- A. Stomach
- B. Gallbladder
- C. Duodenum
- D. Pancreas
- E. Liver

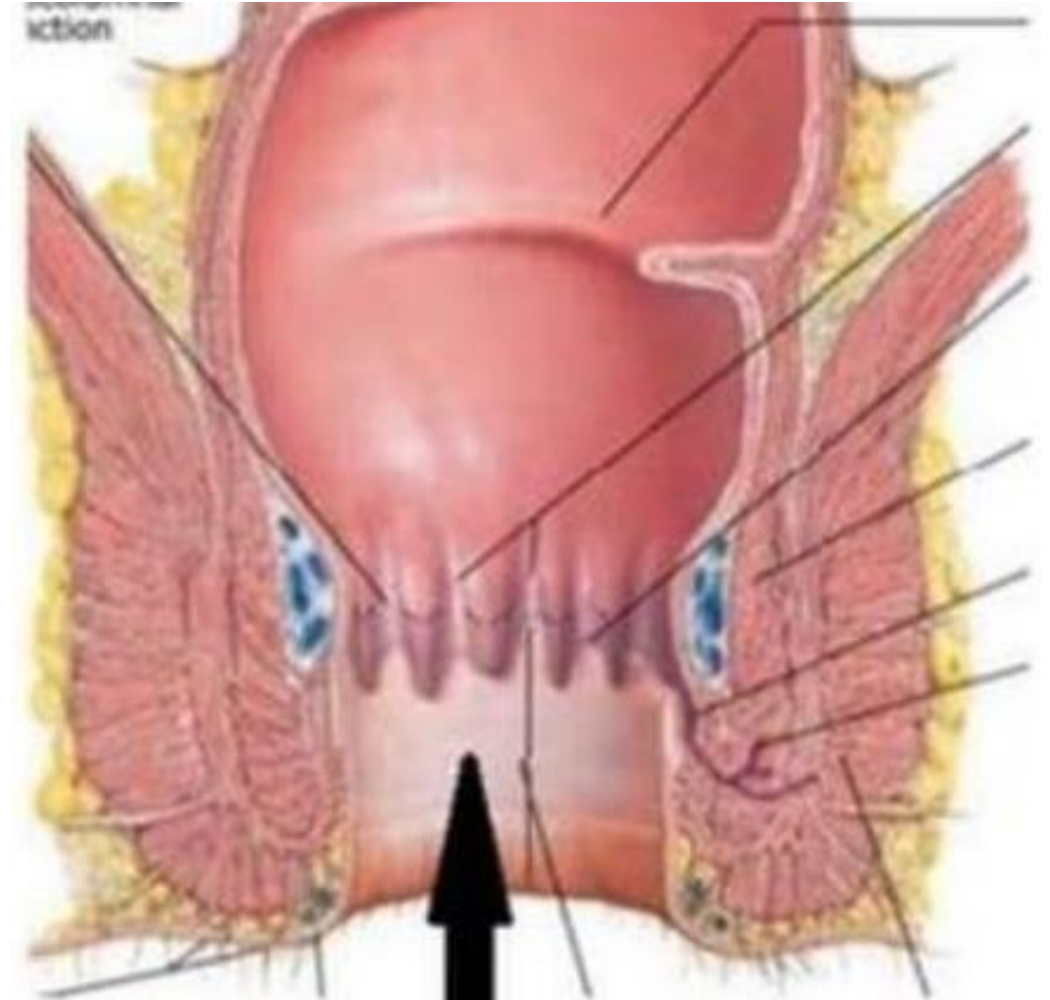
Answer: E



4. The pointed structure characterized by all the following EXCEPT one:

- A. The Lymphatic drainage to the inguinal lymph nodes.
- B. The veins drainage to the inferior vena cava.
- C. The lining epithelium is stratified squamous epithelium nonkeratinized.
- D. It has visceral sensation.
- E. The blood supply from internal iliac artery.

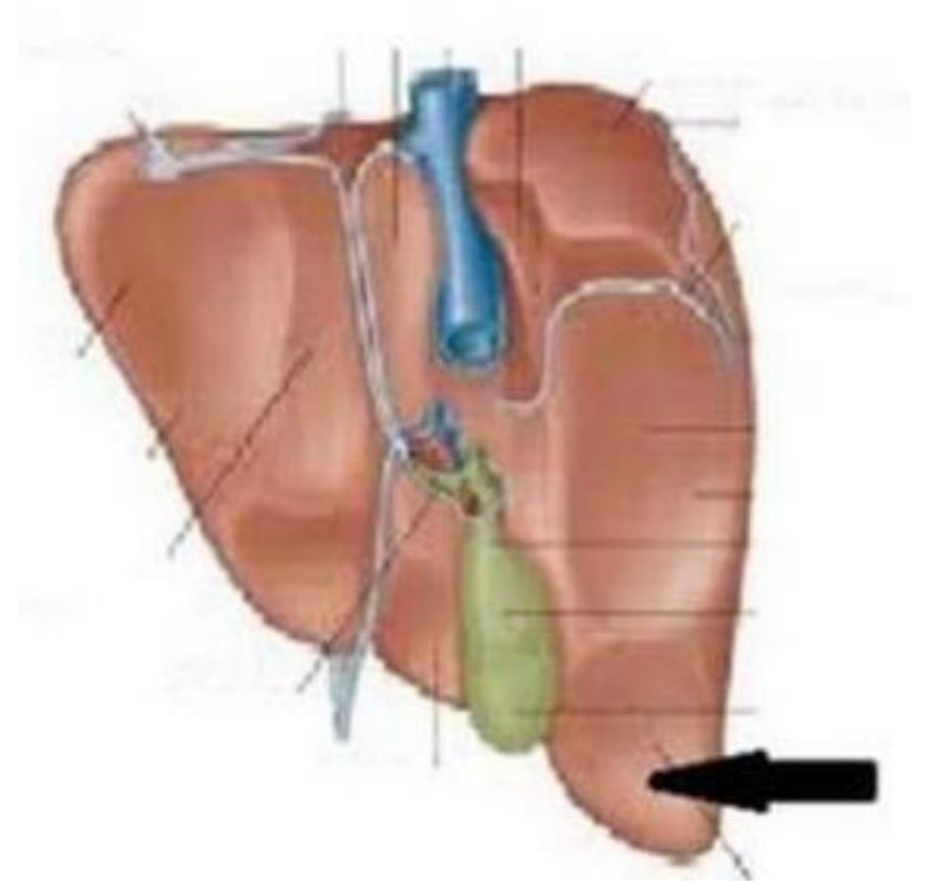
Answer: D



5. Identify the pointed impression:

- A. Gastric
- B. Pyloric
- C. Duodenal
- D. Colic
- E. Renal

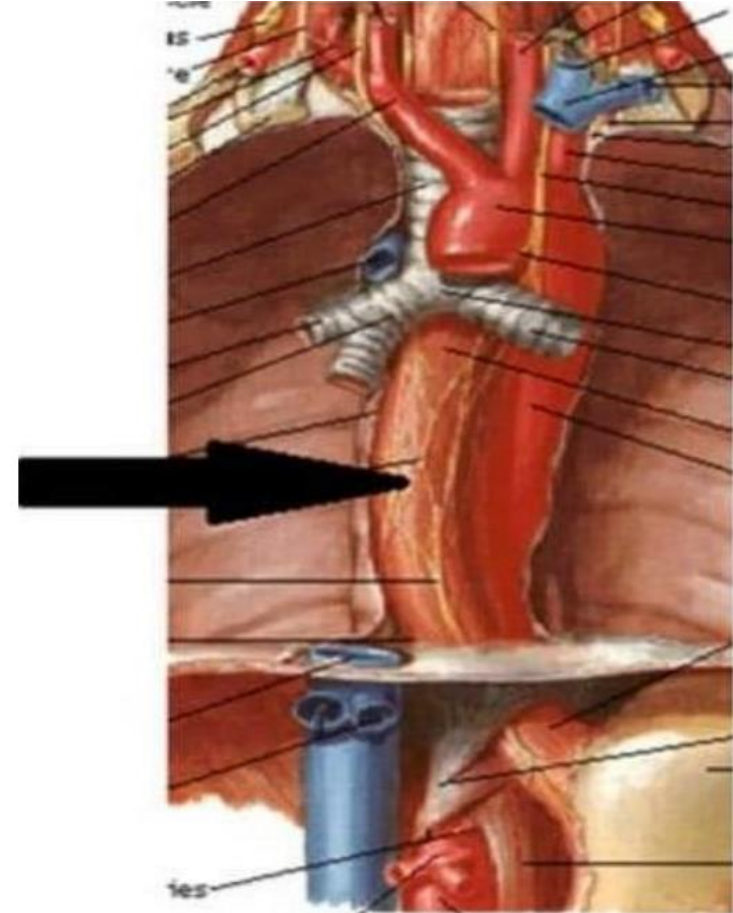
Answer: D



6. Swallowing of a foreign body through the pointed structure is lodge in all the following sites EXCEPT:

- A. Pressure by arch of the aorta.
- B. At the beginning.
- C. Passing through the diaphragm.
- D. Crossing by descending thoracic aorta
- E. Crossing by left bronchus.

Answer: D



7. The pointed structure is reinforced by which one of the following:

- A. Conjoint tendon.
- B. Internal oblique aponeurosis.
- C. Transversalis fascia.
- D. Inguinal ligament.
- E. External oblique aponeurosis

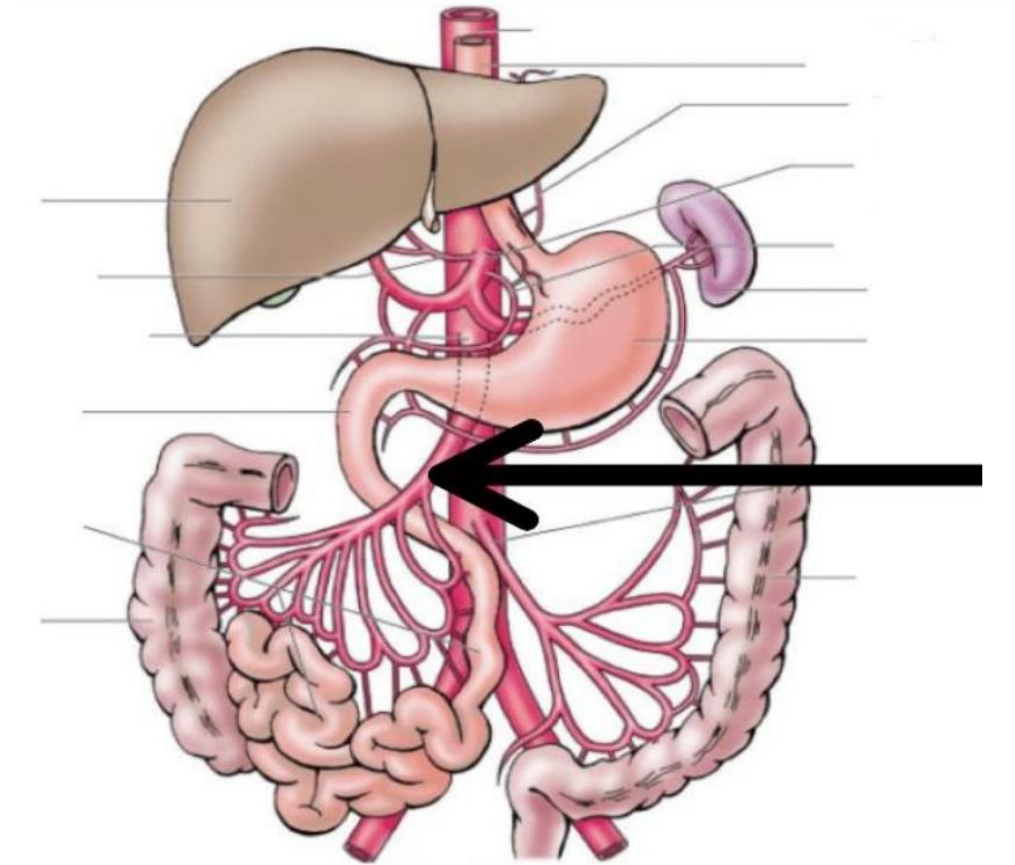
Answer: A



8. Ligation of the pointed artery at the pointed site, it causes ischemia to one of the following organs:

- A. Stomach
- B. Duodenum
- C. Ascending colon
- D. Pancreas
- E. Descending colon

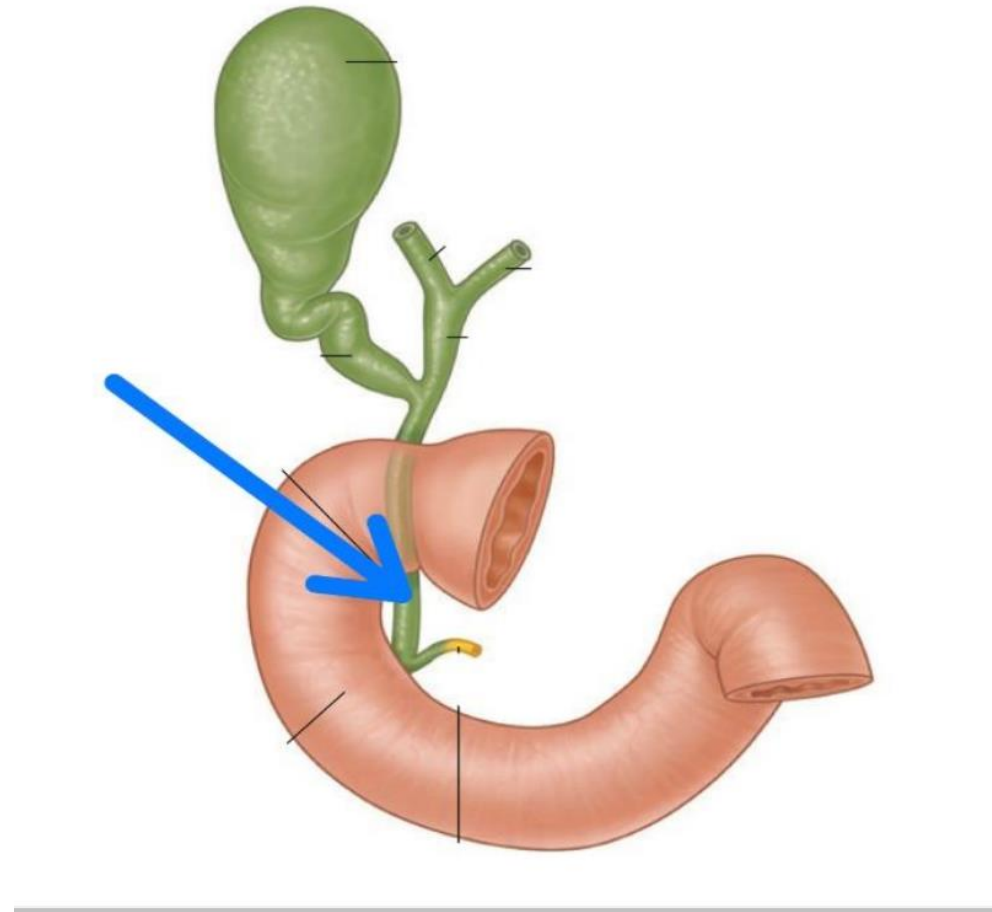
Answer: C



9. The length of the pointed structure is :

- A. 6-7 cm.
- B. 8-10 cm
- C. 2-3 cm
- D. 4-5 cm
- E. 11-12 cm

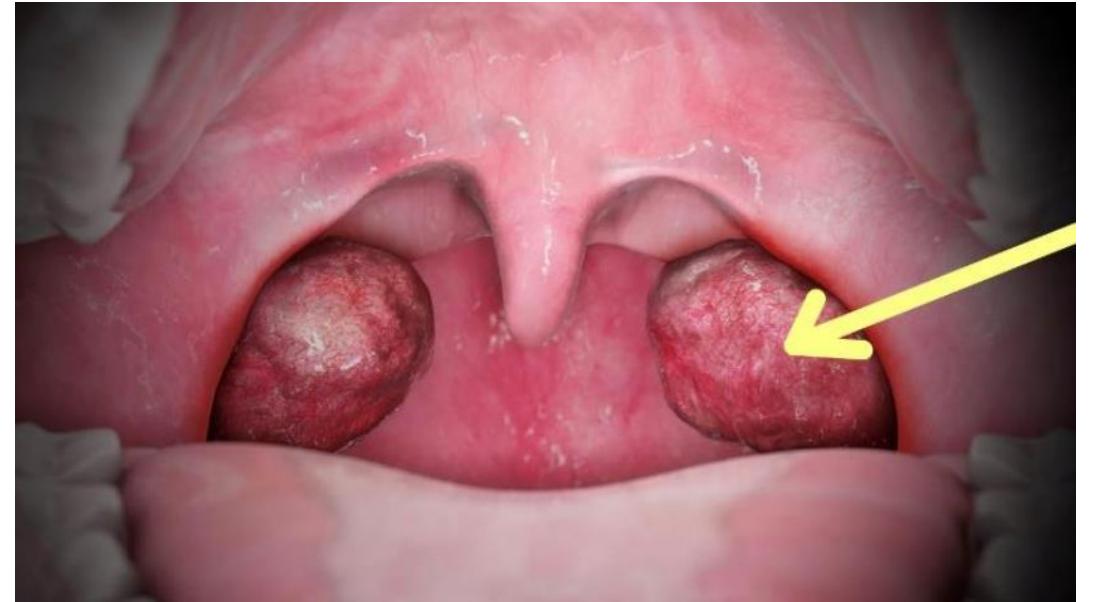
Answer: B



10. The nerve supply of the pointed structure is :

- A. Lesser palatine
- B. Greater palatine
- C. Autonomic
- D. Short sphenopalatine
- E. Long sphenopalatine

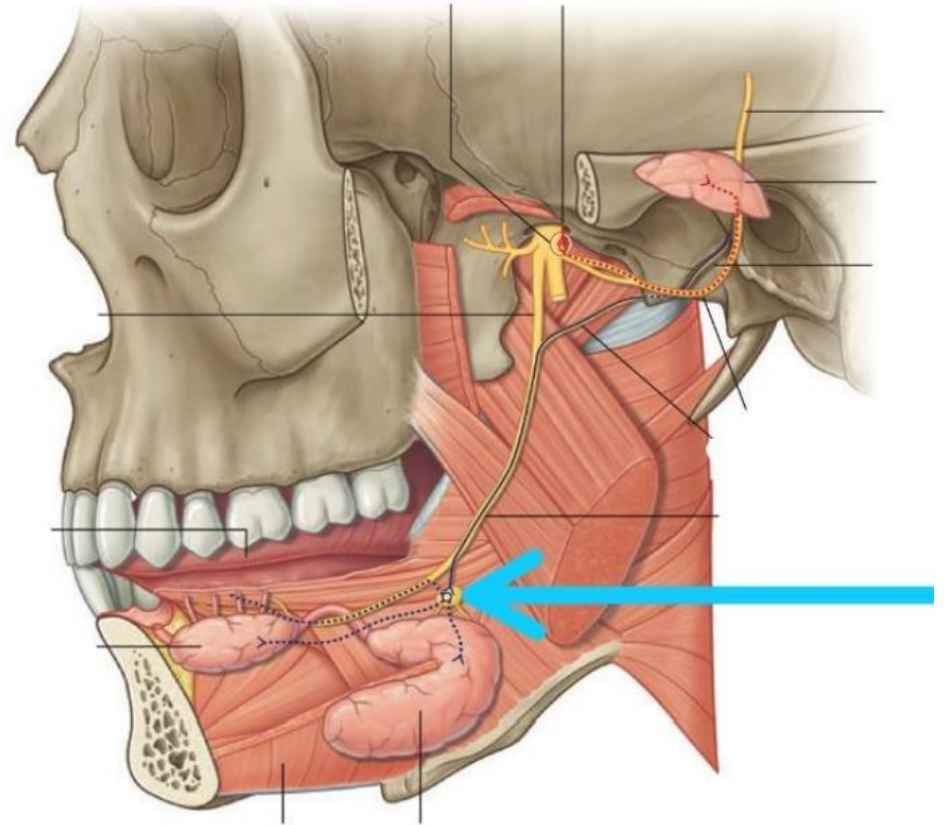
Answer: A



11. Identify the pointed structure:

- A. Otic ganglia.
- B. Submandibular ganglia.
- C. Pterygopalatine ganglion.
- D. Sublingual ganglia.
- E. Ciliary ganglion

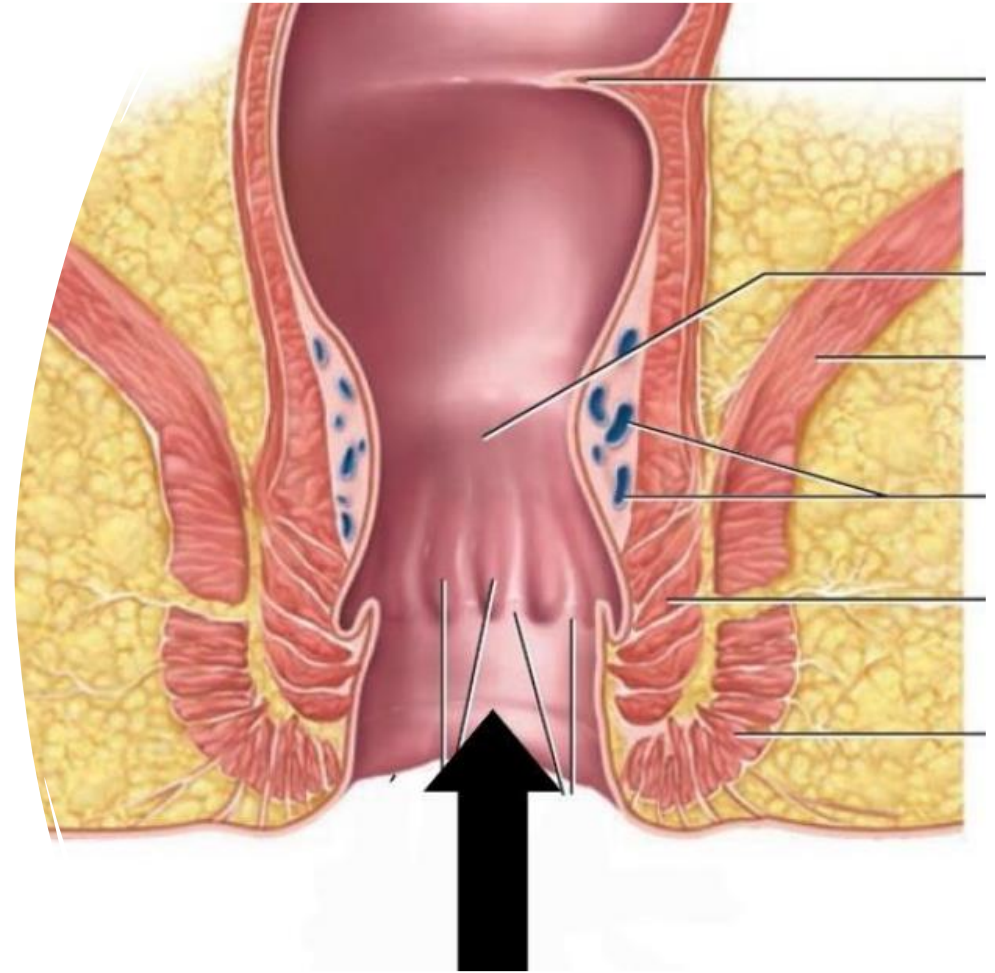
Answer: B



12. The pointed structure has the following features EXCEPT:

- A. The drainage is to the inferior vena cava
- B. It is sensitive to pain
- C. Stratified squamous keratinized epithelium.
- D. The type of hemorrhoid is internal.
- E. It has somatic Innervation

Answer: D



13. Which of the following muscles is not inserted on the highlighted bone?

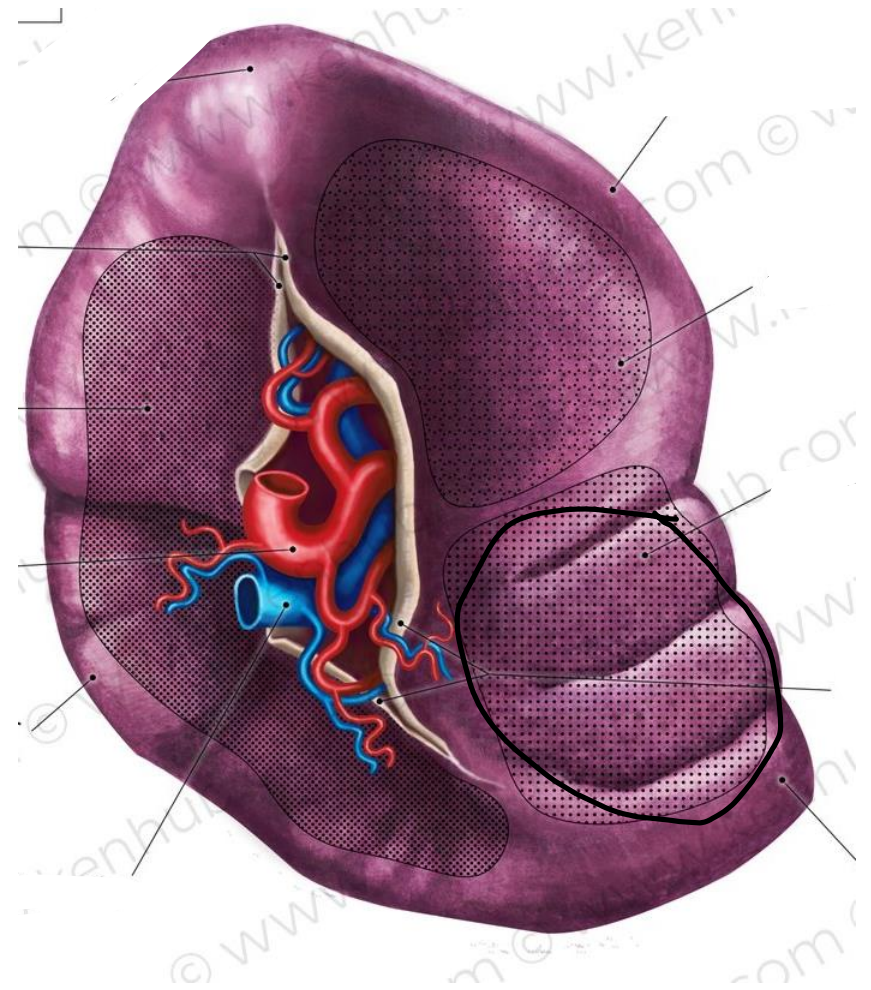
- A. Genioglossus
- B. Temporalis
- C. Medial pterygoid
- D. Lateral pterygoid
- E. Masseter

Answer: A



14. Name the pointed impression on the spleen:

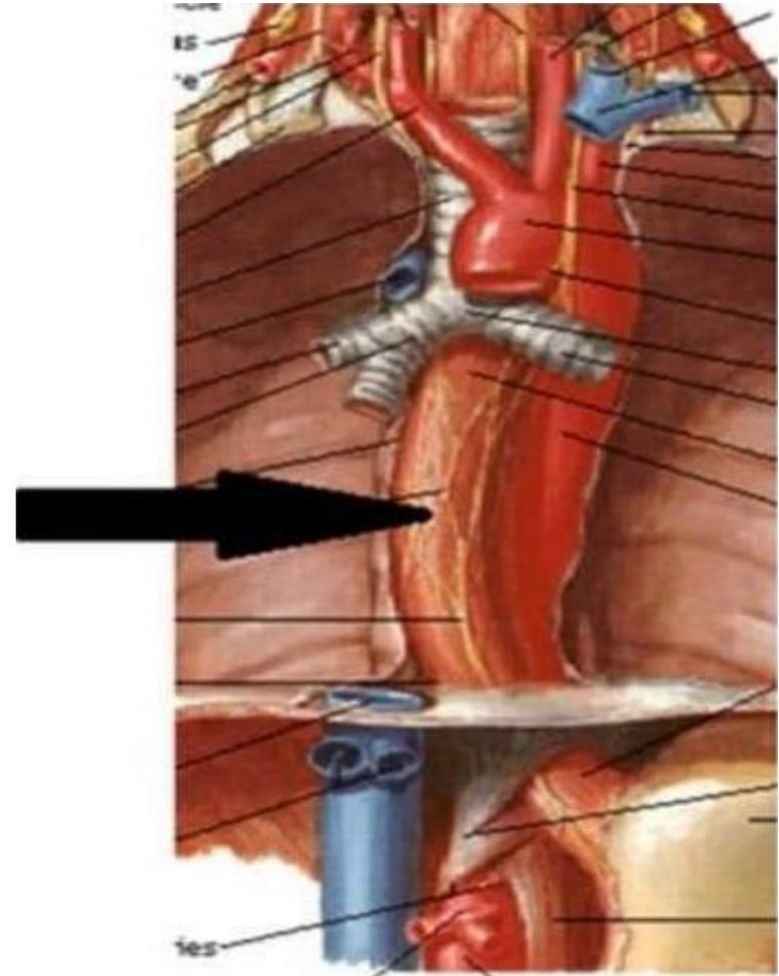
Answer: Colic impression.



15. One of the following isn't located to the left of the pointed structure:

- A. The left subclavian artery
- B. the aortic arch
- C. the thoracic duct
- D. Left main bronchus

Answer: D



16. Wrong about the circled structure:

- A. Part of the midgut
- B. It is supplied by inferior mesenteric artery
- C. Has no tenia coli

Answer: B

