

# *HISTOLOGY PPS*

*Odai AL-Refai*

*Corrected by Islam alqaisi & Nour Abu hantash*

- *Section in the pancreas showed all the followings EXCEPT one:*
- *A. Intercalated duct.*
- *B. Pancreatic acinar cells with polarity.*
- *C. Striated ducts.*
- *D. Centro acinar cells.*
- *E. Interlobular ducts.*
- *Answer: C*

- *Space of Disse: all the following statements are correct EXCEPT:*
- *A. Supported by reticular fibers.*
- *B. It contains Ito cells.*
- *C. The hepatocytes are in direct contact with blood.*
- *D. It houses the microvilli of the hepatocytes.*
- *E. It has direct contact with fenestrated endothelial cells.*
- *Answer: C*

- *Space of Disse: all of the following statements are correct EXCEPT:*
- *A. It contains Ito cells.*
- *B. It contains Kupffer cells.*
- *C. It houses the microvilli of hepatocytes.*
- *D. Supported by reticular fibers.*
- *E. It Intervenes between hepatocytes and sinusoidal lining cells.*
- *Answer: B*

- *Mucosa of the large intestine are characterized by all the following EXCEPT:*
- *A. Lymphatic nodules are frequently seen in lamina propria.*
- *B. Mucosa is thicker than that of the small intestine it contains crypts of Lieberkühn but no villi.*
- *C. Muscularis mucosa is well developed.*
- *D. The cells of the crypts of Lieberkühn in lamina propria are the same as those of the small intestine.*
- *E. Lining epithelium is simple columnar absorbing cells with numerous goblet cells.*
- *Answer: D*

- *Liver sinusoids, all of the followings are correct EXCEPT:*
- *A. Separated from the underlying hepatocytes by space of Disse.*
- *B. Hepatocytes are in direct contact with blood stream.*
- *C. Supported by reticular fibers.*
- *D. Contain mixed blood.*
- *E. Lined by endothelial cells and Kupffer cells.*
- *Answer: B*



- *All of the following are lined by simple columnar with goblet EXCEPT:*
- *A. ilium.*
- *B. gall bladder.*
- *C. Small intestine.*
- *D. jejunum.*
- *E. colon.*
- *Answer: B*

- *Which one of the following organs the lining epithelium is simple columnar With numerous goblet cells:*
- *A. Gallbladder.*
- *B. Duodenum.*
- *C. Appendix.*
- *D. Colon.*
- *E. Stomach.*
- *Answer: D*



- *Wrong about colon histology:*
- *Answer: Presence of Peyer's patches.*

## ***MID TERM MATERIAL***

- *The Striated ducts characterized by all of the following EXCEPT:*
- *A. It has elongated mitochondria.*
- *B. It is interlobular duct.*
- *C. Secretes lysozyme and IgA.*
- *D. It has radial striation.*
- *E. Lined by tall cuboidal cells.*
- *Answer: B*

- *Histology of the stomach: all the following statements are correct EXCEPT:*
- *A. Chief cells are basophilic and predominant in the base of tubular gastric gland.*
- *B. The gastric pits in the body are long and narrow.*
- *C. The predominant cells in the pyloric region are the mucous cells.*
- *D. Parietal cells show intracellular canaliculi during activity.*
- *E. The parietal cells are located in the neck aspect of the fundic gland.*
- *Answer: B*

- *Which of the following is NOT true:*
- *Answer: Taste buds are medial to the circumvallate papillae*
  
- *Which of the following is not predominant in the pylorus*
- *Answer: Basophilic chief cells*
  
- *Intestinal glands contain all of the following except:*
- *Answer: Lacteals*

- *Concerning the histology of the glands of the digestive system, all the followings are correct EXCEPT:*
- *A. The parotid gland has acini capped by serous demilunes and delivers the secretions into intercalated ducts.*
- *B. The pancreatic acini are serous glands containing centroacinar cells and their cells are characterized by polarity.*
- *C. The submandibular gland is a compound tubuloalveolar gland, it has a complicated duct system.*
- *D. The Von Ebner glands deliver their serous secretion into the groove of the circumvallate papillae.*
- *E. The Brunner glands in the submucosa of the duodenum secretes mucus and gastrine.*
- *Answer: A*

- *The intestinal Villi contain all the followings EXCEPT:*
- *A. Smooth muscle.*
- *B. Striated borders.*
- *C. Paneth cells.*
- *D. Lacteals.*
- *E. Simple columnar epithelium and goblet cells.*
- *Answer: C*



- *Section in the parotid gland, one of the following structures is not present in the section.*
- *A. Serous acinus.*
- *B. Striated duct.*
- *C. Intercalated duct.*
- *D. Serous Demilune.*
- *E. Interlobular duct.*
- *Answer: D*

- *Choose the correct statement with respect to salivary glands:*
- *A. The submandibular gland is exclusively composed of serous cells.*
- *B. The labial, palatal and sublingual glands are non-encapsulated.*
- *C. The parotid gland is described histologically as a branched tubuloacinar gland.*
- *D. Salivary secretions are devoid of lysozyme.*
- *E. The main duct of the submandibular gland is lined by non-keratinized stratified squamous epithelium before it empties into the oral cavity.*
- *Answer: E*

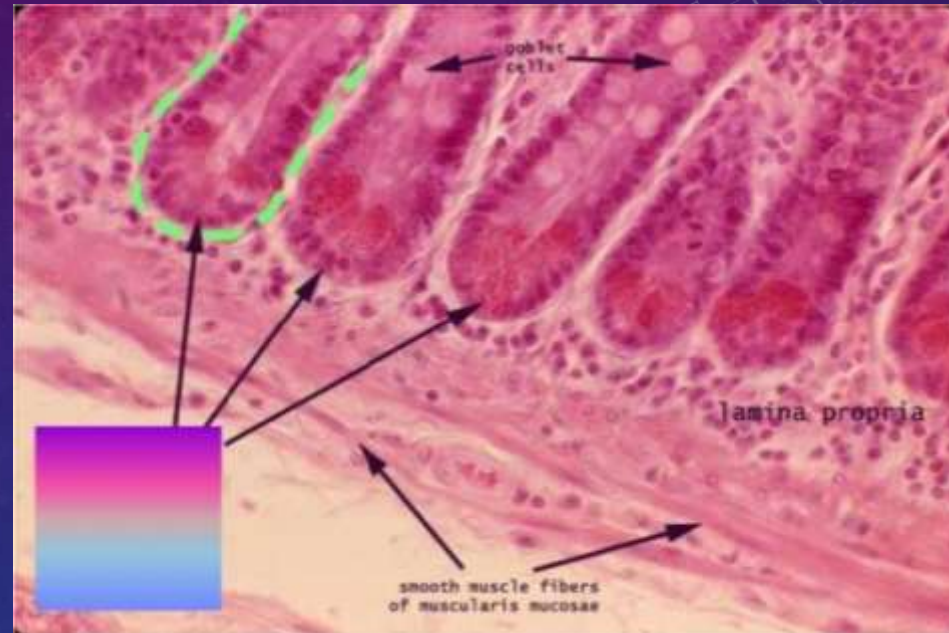
- *All the following statements concerning the jejunum are correct EXCEPT:*
- *A. The mucosa has prominent plicae circularis.*
- *B. The mesentery contains simple arcades and long vasa recta.*
- *C. The submucosa contains brunners gland.*
- *D. The villi contains blood capillaries and lacteals.*
- *E. It is suspended from the posterior abdominal wall by mesentery.*
- *Answer: C*

- *Wrong:*
- *Answer: active chief cell contains canaliculi.*
  
- *Concerning the histology of the stomach, all are correct except:*
- *Answer: in the pyloric region the chief cells are abundant and located in the ... aspect of the pyloric gland.*
  
- *Concerning the histology of the liver, all are correct except:*
- *Answer: the blood sinusoids are lined by unfenestrated endothelial cells and Kupffer cells*

- *The crypts of Lieberkühn in small intestine, all are correct except:*
- *Answer: it contains DNES cells which manufacture and release the progesterone.*
  
- *Concerning the histology of digestive glands, all are true except:*
- *Answer: the parotid acini are capped by serous demilunes & deliver their secretion into intercalated ducts.*
  
- *Histology of the parotid gland all true except:*
- *answer: presence of Centroacinar cells.*
  
- *Wrong about large intestine histology:*
- *Answer: crypts are branched tubular.*

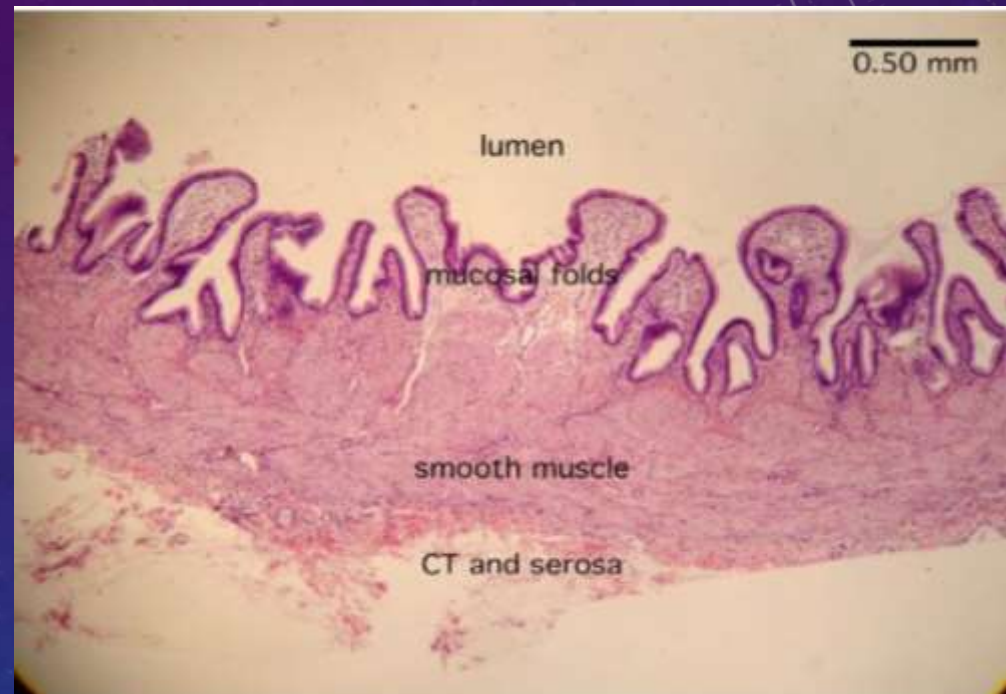


- *Identify the pointed structures in this section:*
- *A. Intestinal gland*
- *B. Brunner's gland*
- *C. Gastric gland*
- *D. Von Ebner's gland*
- *E. Esophageal gland*
- *Answer: A*





- *Identify this section:*
- *A. Esophagus.*
- *B. Duodenum.*
- *C. Colon.*
- *D. Appendix.*
- *E. Gallbladder.*
- *Answer: E*



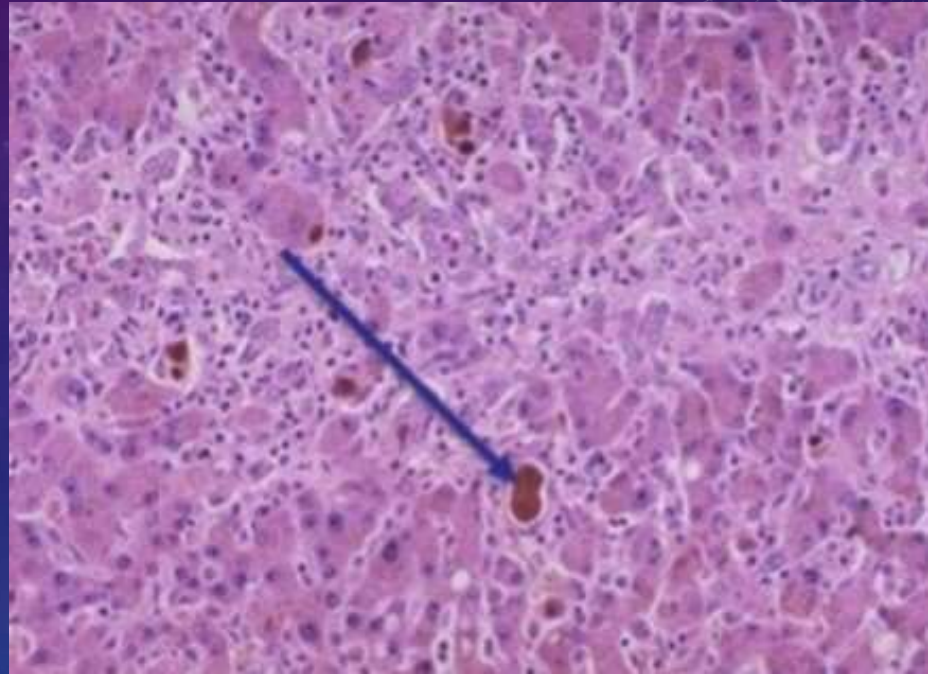
- *Identify the pointed structure in this section:*
- *A. Branch from portal vein.*
- *B. Bile duct.*
- *C. Central vein.*
- *D. Branch from hepatic artery.*
- *E. Blood sinusoids.*
- *Answer: C*



- *The following histological section is from:*
- *Answer: **Simple tubular gland***

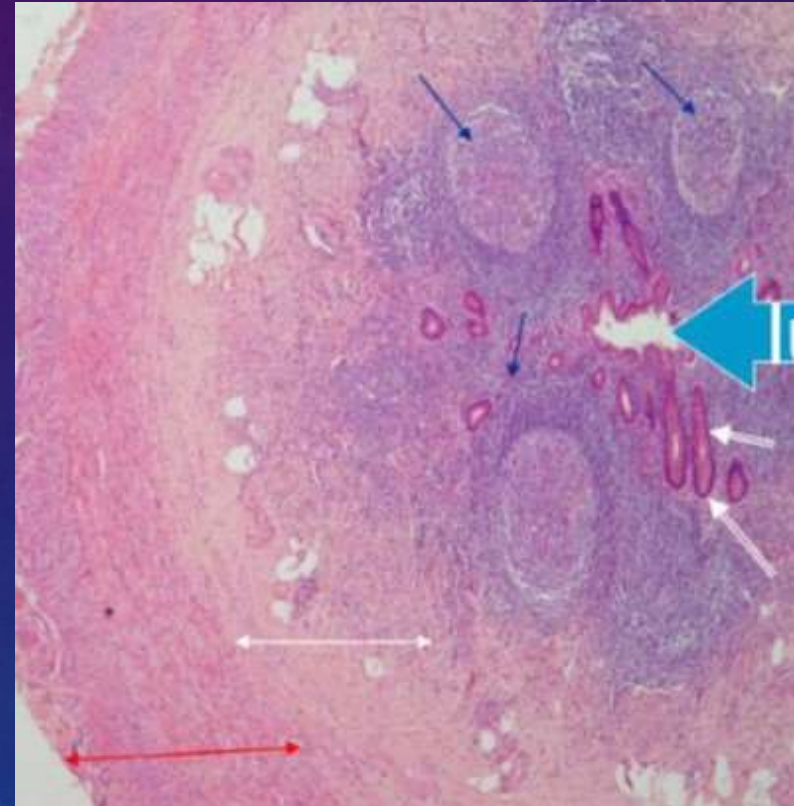


- *What does the arrow represent:*
- *Answer: **Accumulation of bile***

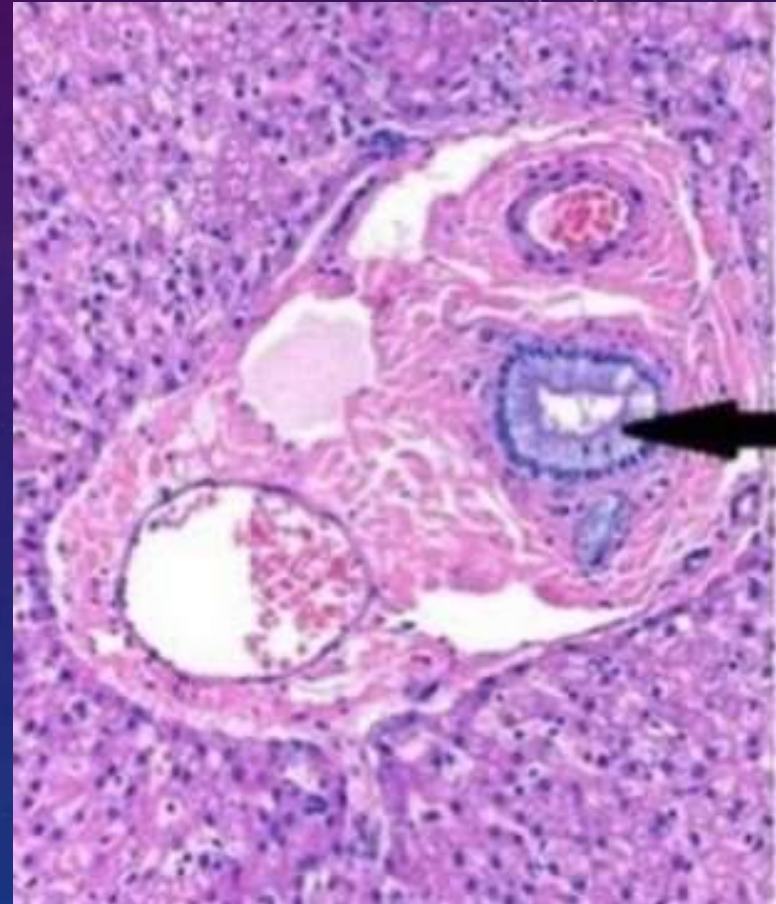




- *The following histological section represents:*
- *Answer: Appendix*

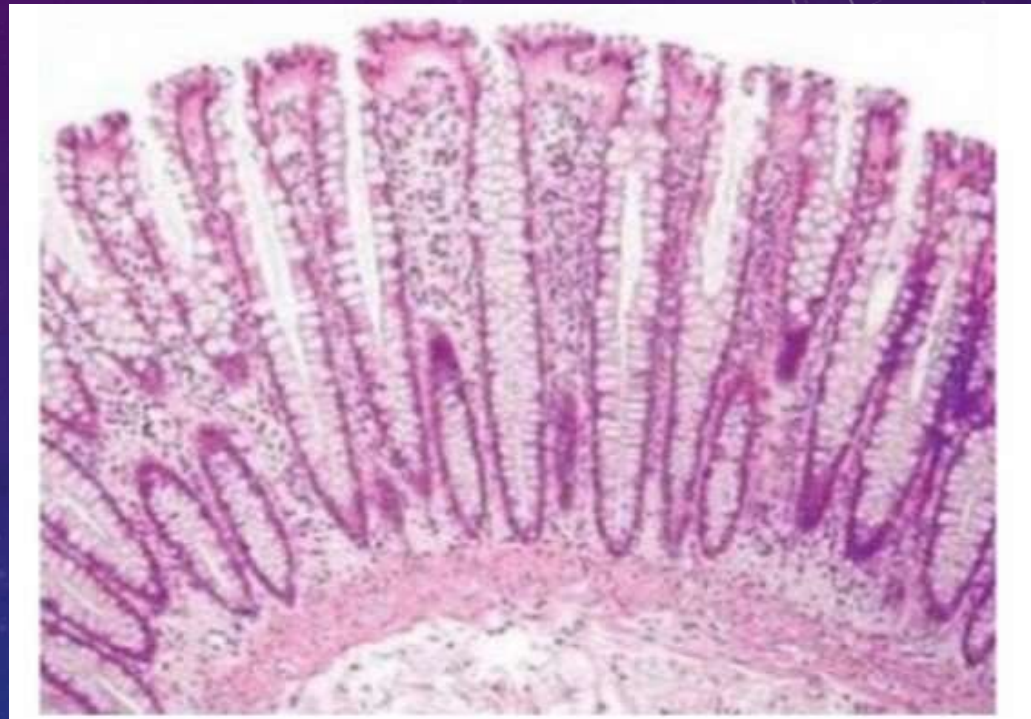


- *Identify the pointed structure:*
- *A. Portal Vein.*
- *B. Hepatic Artery.*
- *C. Porta hepatis.*
- *D. Blood Sinusoids.*
- *E. Bile Duct.*
- *Answer: E*

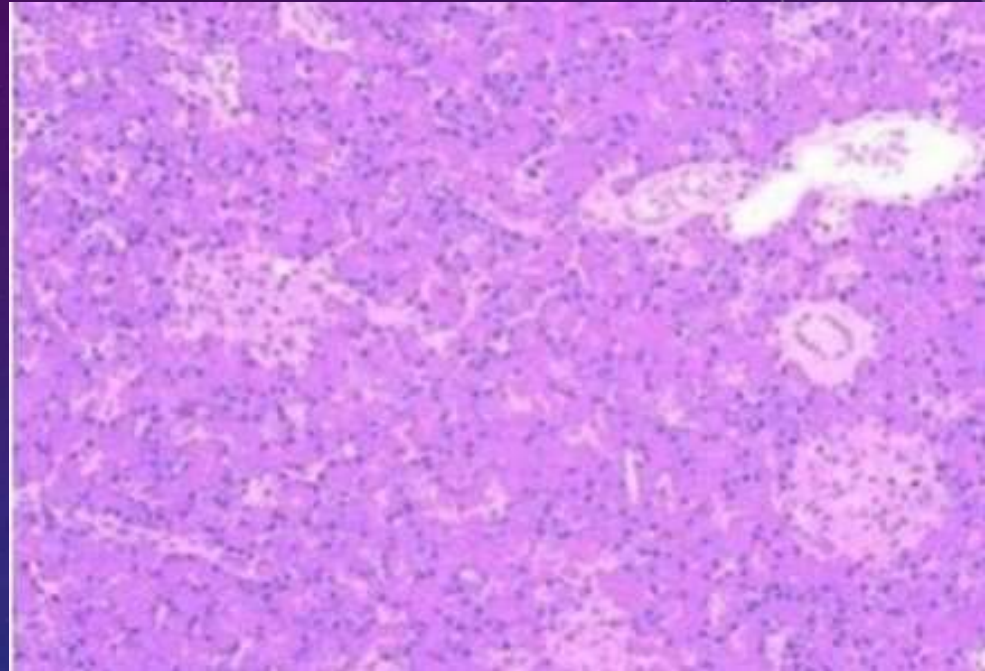




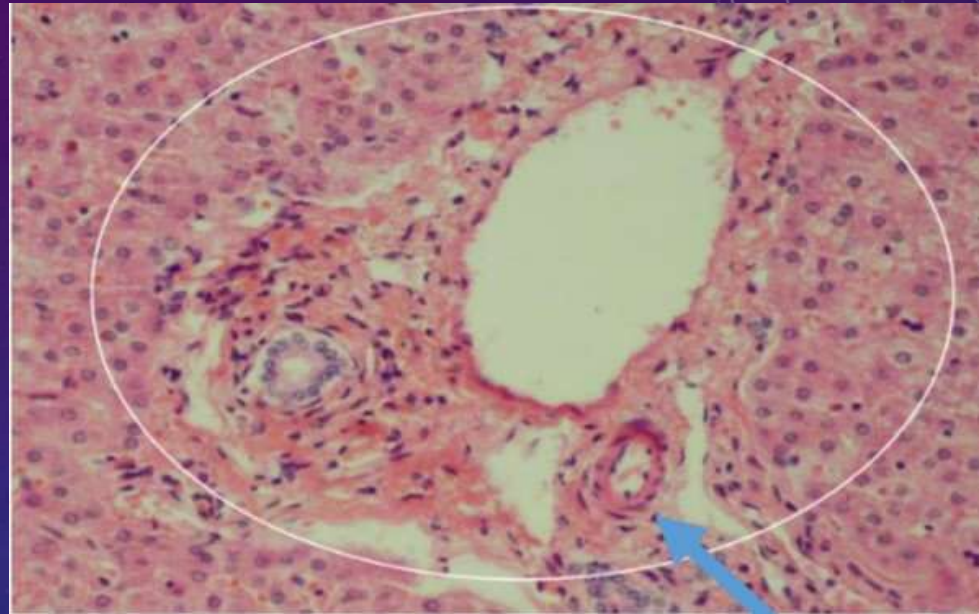
- *Identify this section:*
- *A. Appendix.*
- *B. Colon.*
- *C. Gallbladder.*
- *D. Duodenum.*
- *E. jejunum.*
- *Answer: B*



- *Identify this section:*
- *A. Parotid gland.*
- *B. Sublingual gland.*
- *C. Pancreas.*
- *D. Liver.*
- *E. Submandibular gland.*
- *Answer: C*

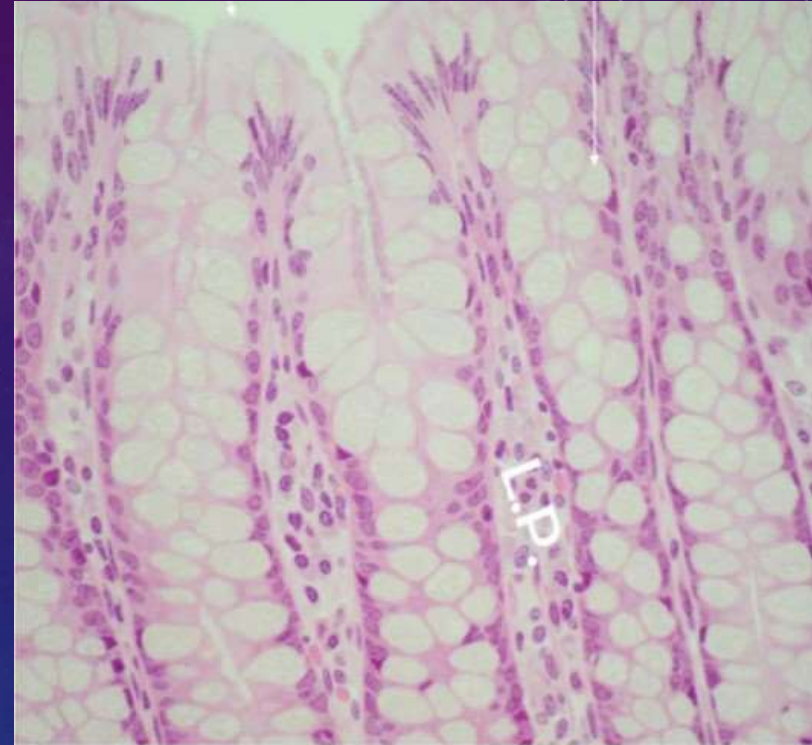


- *The pointed structure:*
- *A. portal triad.*
- *B. bile duct.*
- *C. portal vein.*
- *D. hepatic artery.*
- *E. Central vein.*
- *Answer: D*

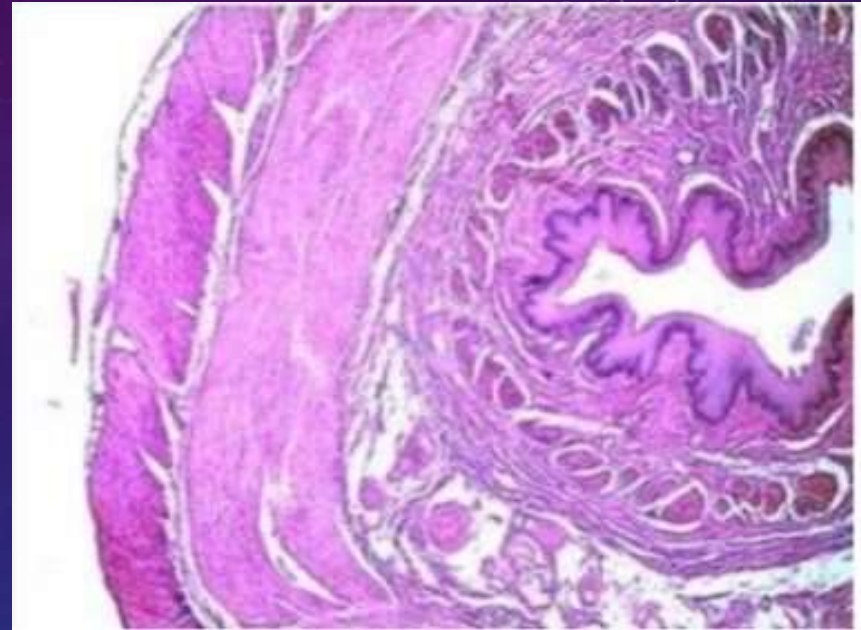




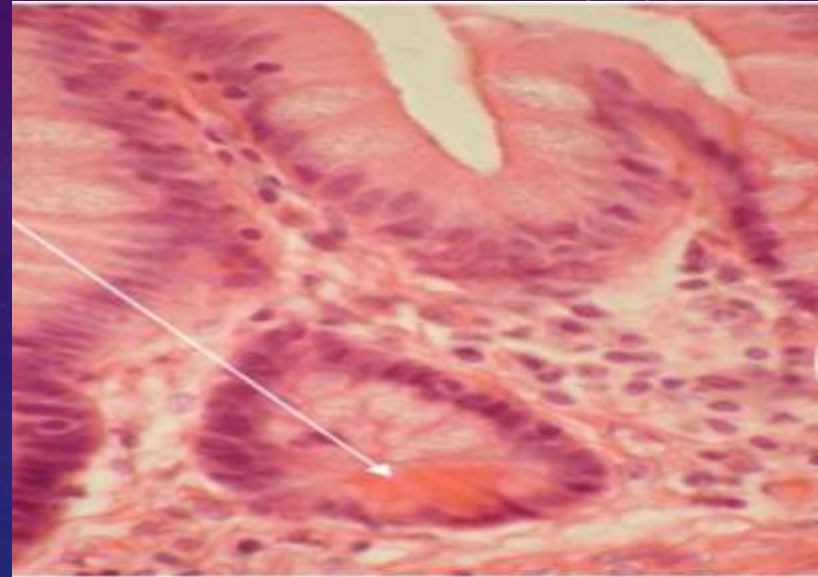
- *The Type of the gland in the picture:*
- *Answer: **simple tubular gland***



- *Identify this section:*
- *A. Gallbladder.*
- *B. Esophagus.*
- *C. Ileum.*
- *D. Duodenum.*
- *E. Stomach.*
- *Answer: B*



- *The pointed cells are:*
- *Answer: **paneth cell.***





- *Identify the pointed cells in this section:*
- *A. Chief cells.*
- *B. Parietal cells.*
- *C. Mucous cells.*
- *D. Paneth cell.*
- *E. Lymphocytes.*
- *Answer: A*





*THE END*

