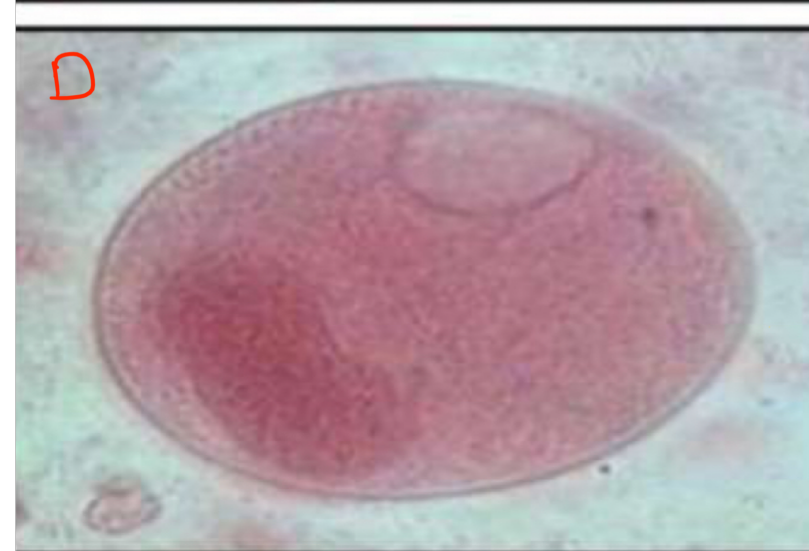
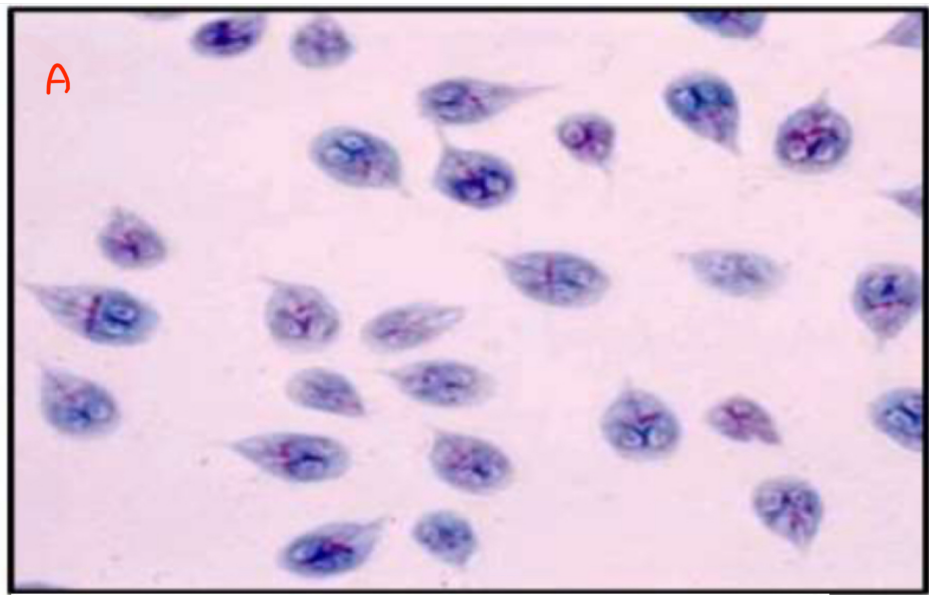


A: *Entamoeba histolytica* trophozoite  
B: *Entamoeba histolytica* cyst  
C: *Entamoeba Coli* trophozoite  
D: *Entamoeba Coli* cyst

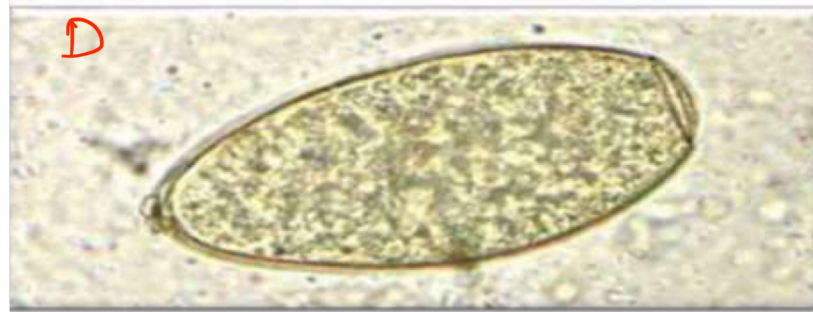
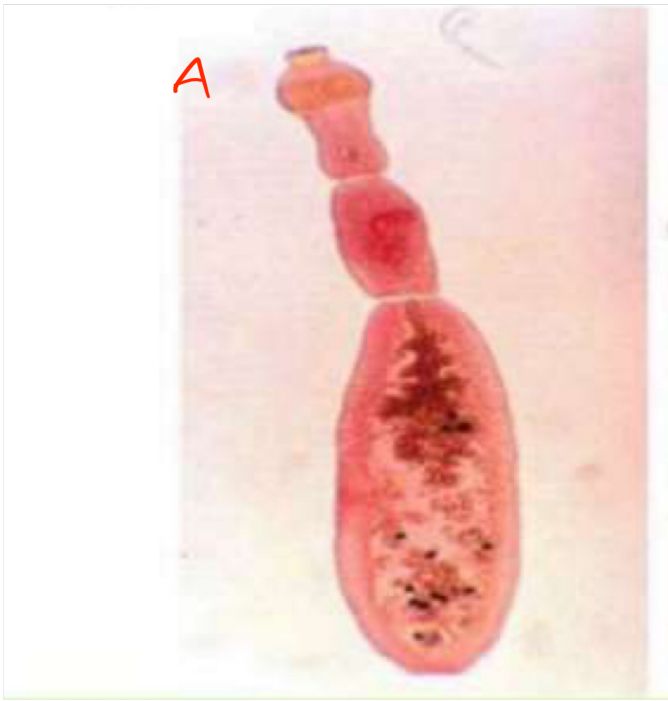


A:Giardia lamblia trophozoite  
B:Giardia lamblia cyst  
C:Balantidium coli trophozoite  
D:Balantidium coli cyst



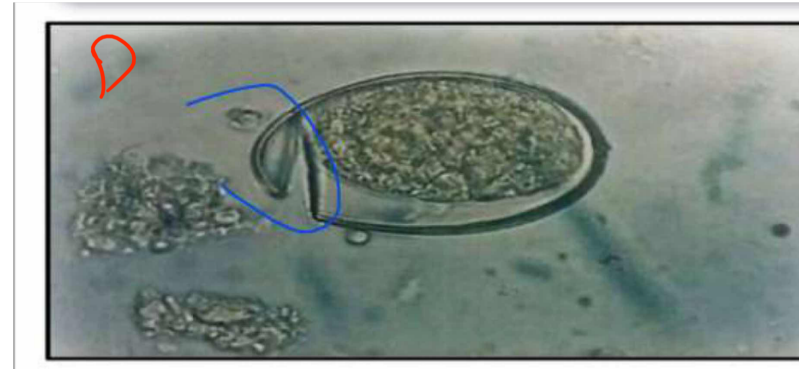
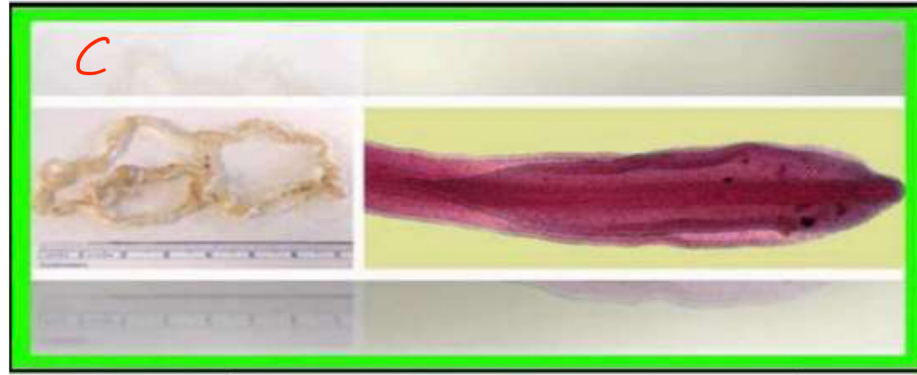
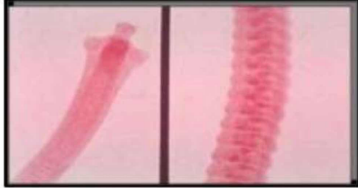
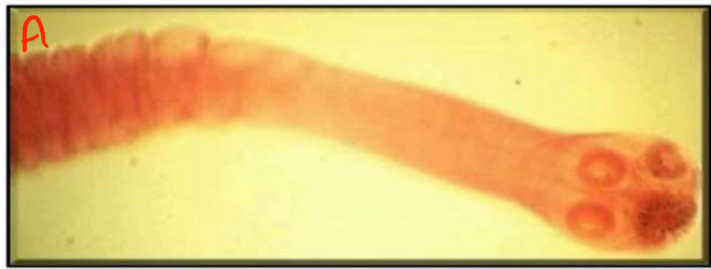


A: Enterobius Vermicularis worm  
B: Enterobius Vermicularis egg  
C: Trichuris Trichiura worm  
D: Trichuris Trichiura egg



A: Echinococcus granulosus worm  
B: Echinococcus granulosus ova  
C: Fasciola hepatica worm  
D: Fasciola hepatica egg





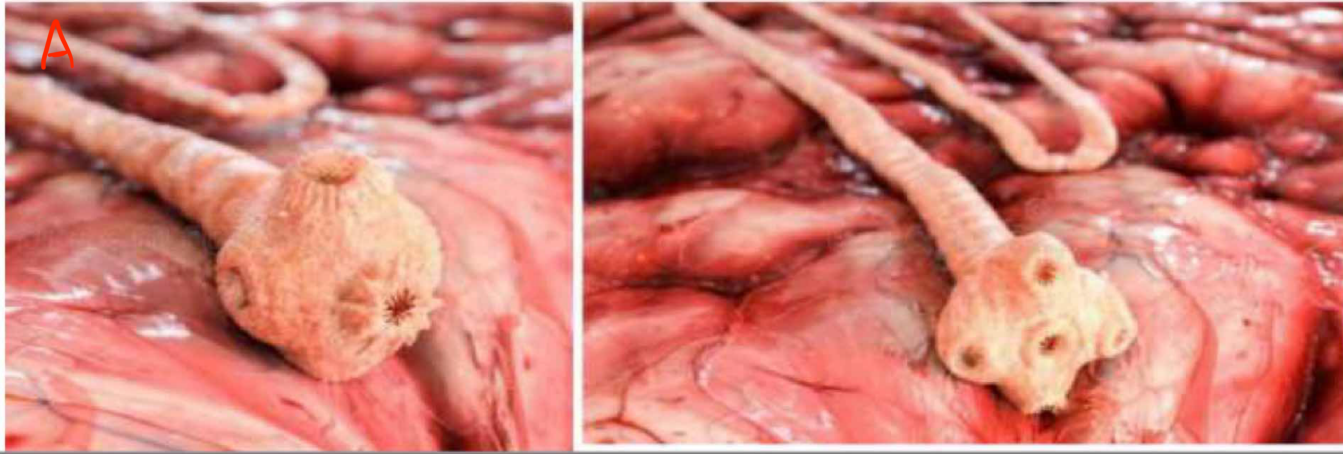
A:Hymenolepis Nana worm

B:Hymenolepis Nana ova

C:diphylobothrium latum

worm

D:diphylobothrium latum egg

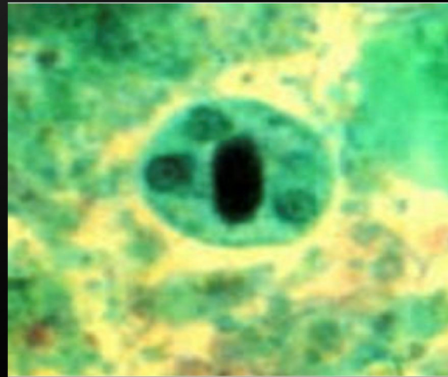


A: *Taenia saginata*  
B: *Taenia solium*



- PATIENT PRESENTS WITH A HISTORY OF RECURRENT EPISODES OF DIARRHEA ALTERNATES WITH CONSTIPATION AND THE MICROSCOPIC EXAMINATION OF STOOL SAMPLE SHOWING AS THE PICTURE. WHICH OF THE FOLLOWING IS THE CAUSE:

- A. ENTAMOEBA HISTOLYTICA.
- B. YERSINIA ENTEROCOLITICA.
- C. GIARDIA LAMBLIA.
- D. CLOSTRIDIUM DIFFICILE.
- E. ENTEROTOXIGENIC ESCHERICHIA COLI.
- ANSWER: A



14

- PATIENT PRESENTS WITH A HISTORY OF WATERY DIARRHEA OF SEVERAL WEEKS' DURATION AND THE MICROSCOPIC EXAMINATION OF STOOL SAMPLE SHOWING AS THE PICTURE. WHICH OF THE FOLLOWING IS THE CAUSE:

- A. GIARDIA LAMBLIA.
- B. CLOSTRIDIUM DIFFICILE.
- C. ENTAMOEBA HISTOLYTICA.
- D. YERSINIA ENTEROCOLITICA.
- E. ENTEROTOXIGENIC ESCHERICHIA COLI.
- ANSWER: A



1x

4

