



microbiology *parasite*

Odai AL-refai

Corrected by islam alqaisi



- The definitive host for *Entamoeba histolytica* is:
- A. Sheep.
- B. Man.
- C. Rats.
- D. Dogs.
- E. Pigs.
- Answer: b

- *Ascaris lumbricoides*, one is WRONG:
- A. Humid environment is needed for infectivity.
- B. Eggs become infective 2 to 6 weeks following deposition.
- C. Reinfection is possible.
- D. Larvae may be found in sputum or gastric aspirates.
- E. Unembryonated egg is the infective stage.
- Answer: E

- Patient presents with a history of watery diarrhea of several weeks' duration and the microscopic examination of stool sample showing as the picture. Which of the following is the cause:
- A. *Giardia lamblia*.
- B. *Clostridium difficile*.
- C. *Entamoeba histolytica*.
- D. *Yersinia enterocolitica*.
- E. Enterotoxigenic *Escherichia coli*.
- Answer: A



- Wrong about Schistosoma:
- Answer: **The female is wider and shorter than the male.**

- Which drug is not used for Ascaris:
- Answer: **Sodium stibogluconate.**

- *Ascaris lumbricoides*, one is wrong;
- A. Eggs are ingested and hatch in the ileum.
- B. Humid environment is needed for infectivity.
- C. Ova is typically stained brown from bile.
- D. Non-segmented.
- E. Eggs become infective 2 to 6 weeks following deposition.
- Answer: A

- Wrong about giardia:
- A. Diagnosis is by antigen testing on stool sample.
- B. Variant specific proteins help the parasite to escape the immune system.
- C. The trophozoites can live for a long time outside the body.
- D. Infective stage is the cyst.
- E. Causes fatty diarrhea.
- Answer: C

- The drug of choice for treating hydatid disease and cysticercosis, is:
- A. Albendazole.
- B. Ivermectin.
- C. Piperazine.
- D. Diethylcarbamazine Citrate.
- E. Pyrantel Pamoate.
- Answer: A

- The definitive host for echinococcus granulosus (hydatid worm) is:
- A. Cats.
- B. Dogs.
- C. Man.
- D. Donkey.
- E. Sheep.
- Answer: B

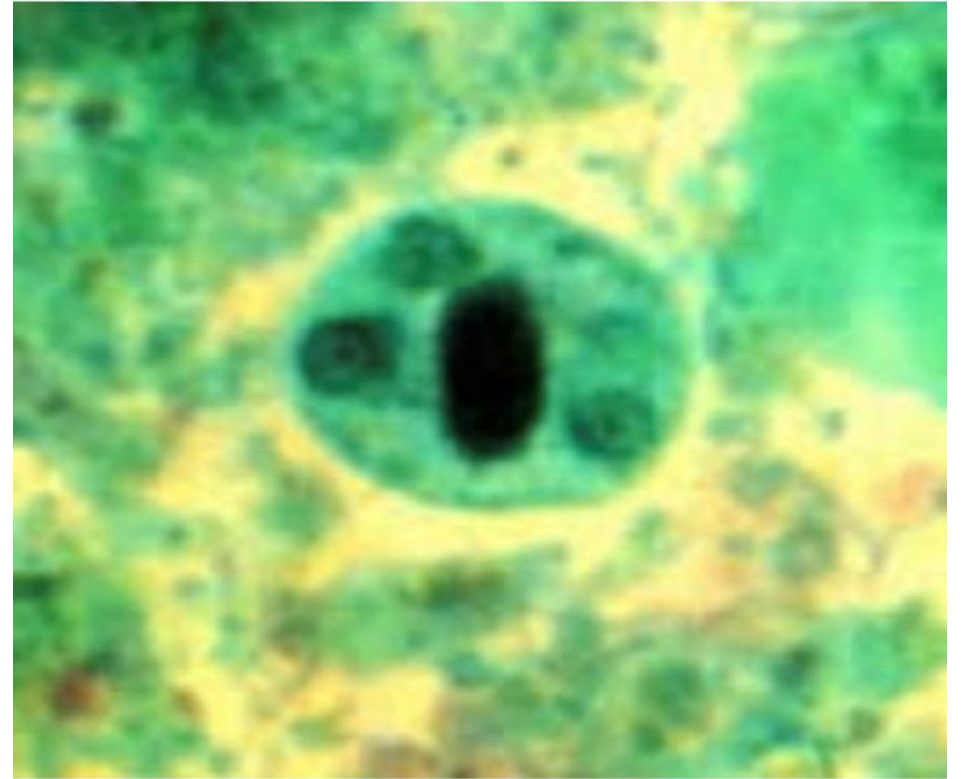
- *Ascaris lumbricoides*, which one of the following is correct:
- A. Flat, Leaf like worms.
- B. Pathology is by granuloma formation and scarring around retained eggs.
- C. Larvae may be found in sputum or gastric aspirates.
- D. The eggs are lightweight and highly infectious immediately after shedding.
- E. Larvae penetrate the skin.
- Answer: c

- Disease resulting in flask-shaped ulcerations in the intestine:
- A. *Entamoeba histolytica*.
- B. *Giardia Duodenalis*.
- C. *Cryptosporidium*.
- D. *Ascaris Lumbricoides*.
- E. hydatid cyst.
- Answer: A

- wrong about *Ascaris lumbricalis*:
- A. humoid is needed to become infective.
- B. transmitted by feco oral.
- C. as mamillated eggs .
- D. it causes loeffler syndrome in lungs.
- Answer: A

- wrong about schistosoma:
- A. bad effects are due to eggs unlike other worms.
- B. women are shorter and wider than men.
- C. it could be related to urinary diseases.
- Answer: B

- Patient presents with a history of recurrent episodes of diarrhea alternates With constipation and the microscopic examination of stool sample showing as the picture. Which of the following is the cause:
- A. Entamoeba histolytica.
- B. Yersinia enterocolitica.
- C. Giardia lamblia.
- D. Clostridium difficile.
- E. Enterotoxigenic Escherichia coli.
- Answer: A



THE END