

Microbiology

Parasitic infections

Entamoeba histolytica

large intestine , bloody diarrhea , RBC in trophozoite , pseudopodia (4 , (4 , (الكاذبة) nucleus = mature , faeco-oral , acute trophozoite diarrhea , chronic cyst constipation , appendicitis , anchovy liver drainage , flask- shaped ulcer , (brain , skin , liver , right lung) , cyst in stool .

Giardia duodenalis

small intestine , leaf falling movement , beaver fever , watery diarrhea (greasy , foully) , fecal - oral route , infective cyst , stool trophozoite (little time) .

Cryptosporidium spp.

small intestine , oocyst in stool , immunodeficient patients , severe intractable watery diarrhea, Nitazoxanide (HIV) .

ASCARIS LUMBRICOIDES

longer female , posterior curved male , rough pumped egg , Fecal – oral , infective embryonated egg - small intestine , jejunum , loeffler's syndrome (lung) , Albendazole , Eosinophilia .

ENTEROBIUS VERMICULARI

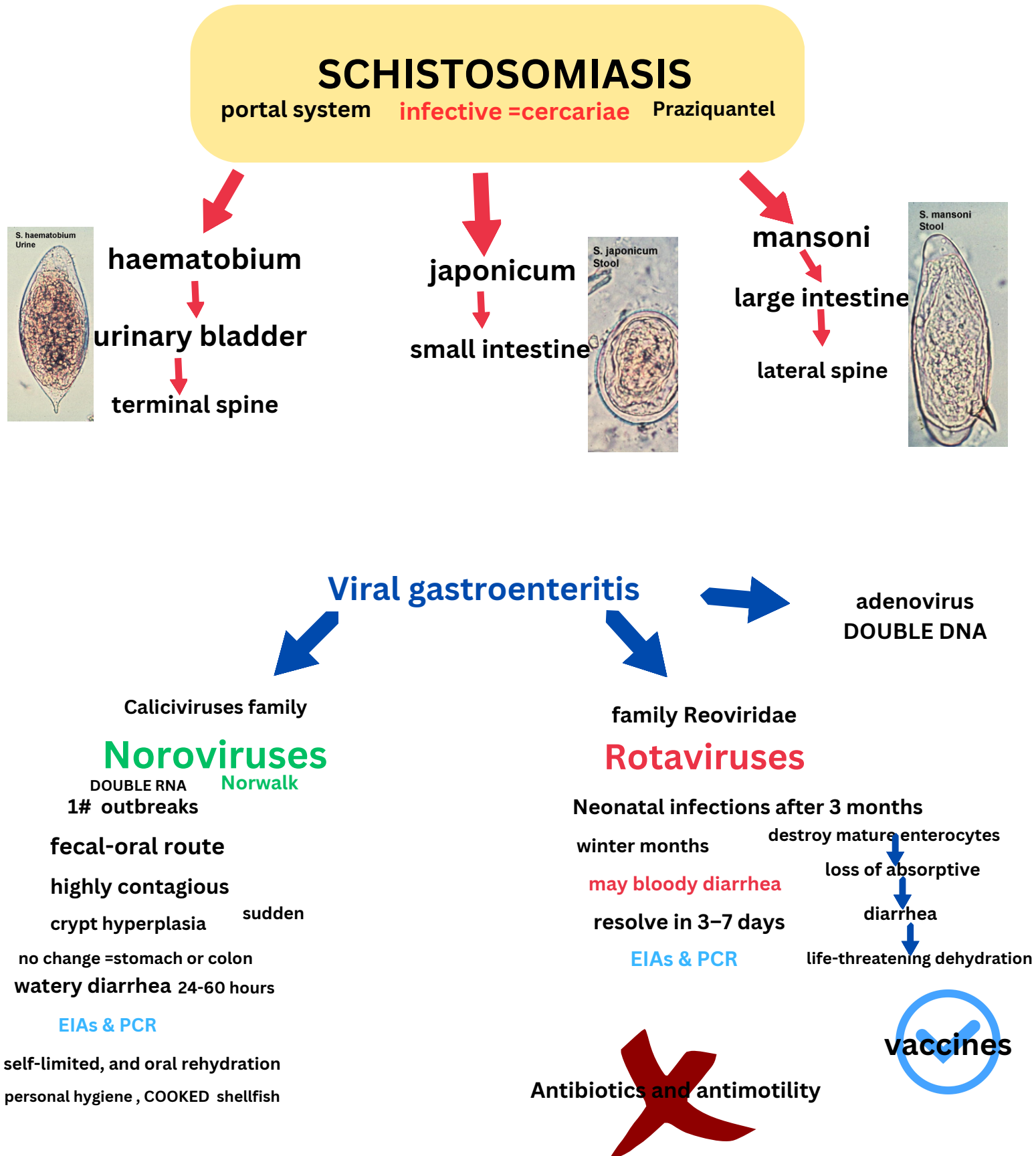
pinworm , children , fecal oral , American football shaped egg - (pruritus) itching , flat-sided ovum , Scotch tape , pain at night , malabsorption , albendazole .

Hydatid cysts

Echinococcus granulosus , DOG , smallest , surgery, albendazole , grape like , mostly in liver .

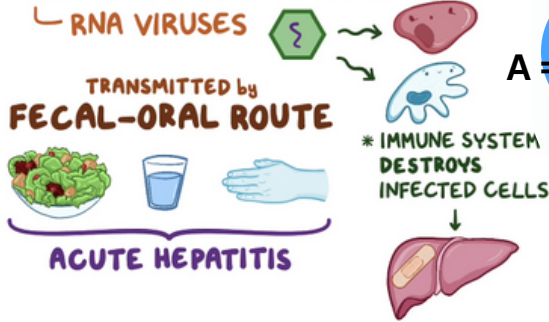
هذا كيس فيه ديدان صغيرة لازم نطلعه بعملية جراحية من دون ما ينفث الكيس , عشان ما ينتشرن بالدم و ما نقدر نطلعهن .

اسم العملية : PAIR



virology

HEPATITIS A & E



A = vaccines

PREVENTION

HEPATITIS A
~ IMMUNE SERUM

HEP D VIRUS

RNA VIRUS

- * TRANSMITTED SIMILARLY to HEP B
- * ONLY INFECTS INDIVIDUALS with ACTIVE HEP B

TREATMENT: * NOTHING SPECIAL
↳ TREATING & PREVENTING HEP B TREATS HEP D

HEP B VIRUS

ROUTES of TRANSMISSION:



vaccines

HEPATITIS C VIRUS

* SINGLE STRAND, POSITIVE-SENSE RNA VIRUS

- * NO SYMPTOMS
- * ↑ RISK of HEPATOCELLULAR CARCINOMA

DIAGNOSIS

- * ANTI-HCV ANTIBODIES
- * VIRAL RNA
- * LIVER BIOPSY

TREATMENT

acute = supportive
chronic : DAAs

HBs Ag : just in acute & chronic cases

anti-HBs : in recovered & immunized patients .

anti-HBc IgM : acute .

anti-HBc IgG : chronic and forever (recovered >> immunized) .

never find both of them positive

HBe Ag : just in chronic

Anti-HBe : just in window , resolved acute

