

The University of Jordan  
Faculty Of Medicine



**CVS module**  
3rd Practical  
**Internal morphology of the heart**

**Dr. Ahmed Salman**

**Associate professor of anatomy & embryology**



## **I -Right atrium**

- a. Smooth posterior wall
- b. Rough anterior wall (L. muscoli pectinati).
- c. Septal wall
- d. Sulcus terminalis
- e. Crista terminalis
- f. Fossa ovalis
- g. Annulus ovalis (limbus fossa ovalis).
- h. The right auricle
- i. Opening of Coronary sinus

## **II- Right ventricle**

- a. Smooth outflow part named conus arteriosus (infundibulum)
- b. supraventricular crest
- c. Trabeculae carneae
- d. Posterior papillary muscle
- e. Anterior papillary muscle
- f. Septal papillary muscle
- g. Chordae tendineae
- h. Interventricular septum

## **III- Left ventricle**

- a. Smooth outflow part named aortic vestibule
- b. subaortic curtain
- c. Trabeculae carneae
- d. Posterior papillary muscle
- e. Anterior papillary muscle
- f. Chordae tendineae

## **IV-Heart Valves**

- a. Tricuspid
- b. Mitral
- c. Pulmonary
- d. Aortic

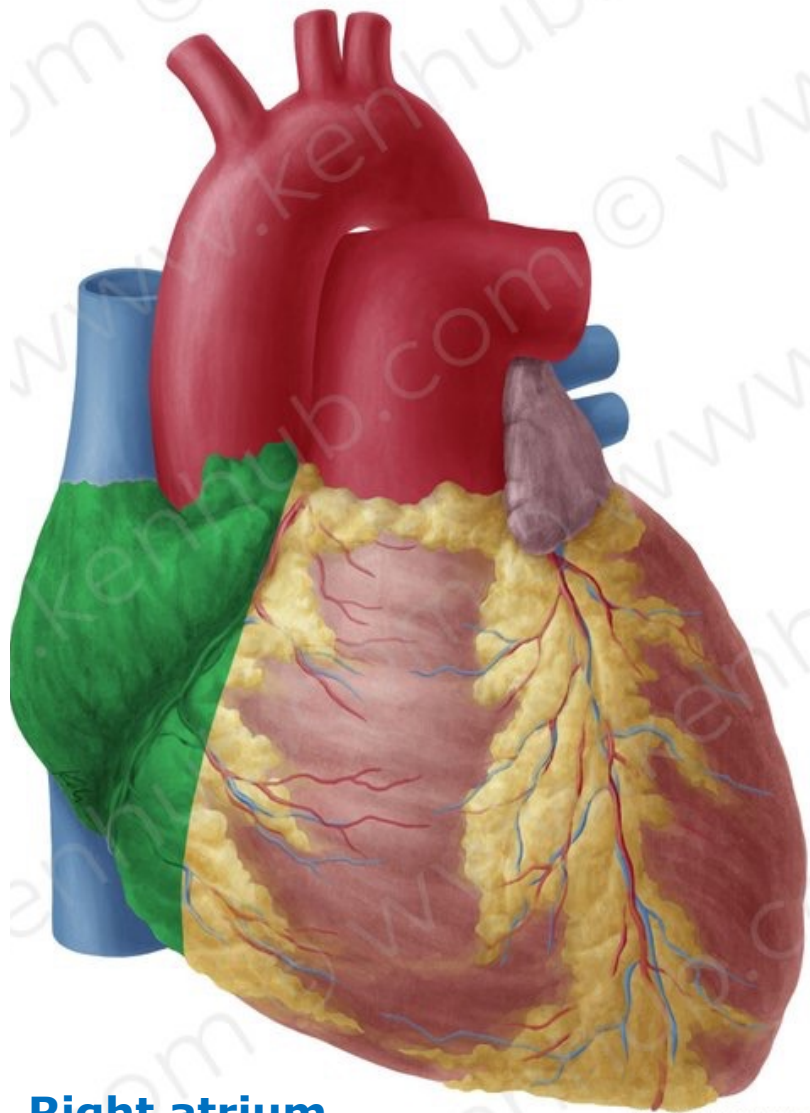
## **V- Conductive system (Know the sites)**

- a. The sinuatrial node(S.A)
- b. The atrioventricular node (A.V)
- c. The atrioventricular bundle
- d. Right and left terminal branch

# Right Atrium

---

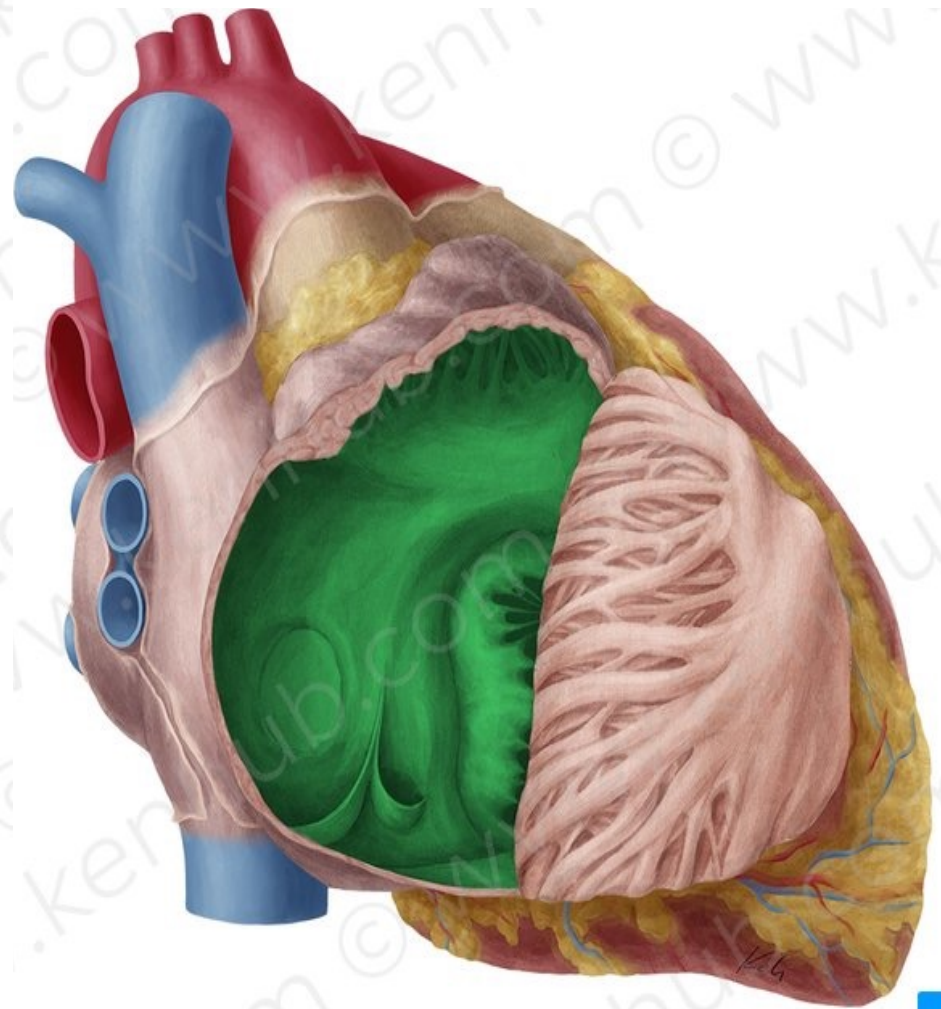




**Right atrium**

© www.kenhub.com

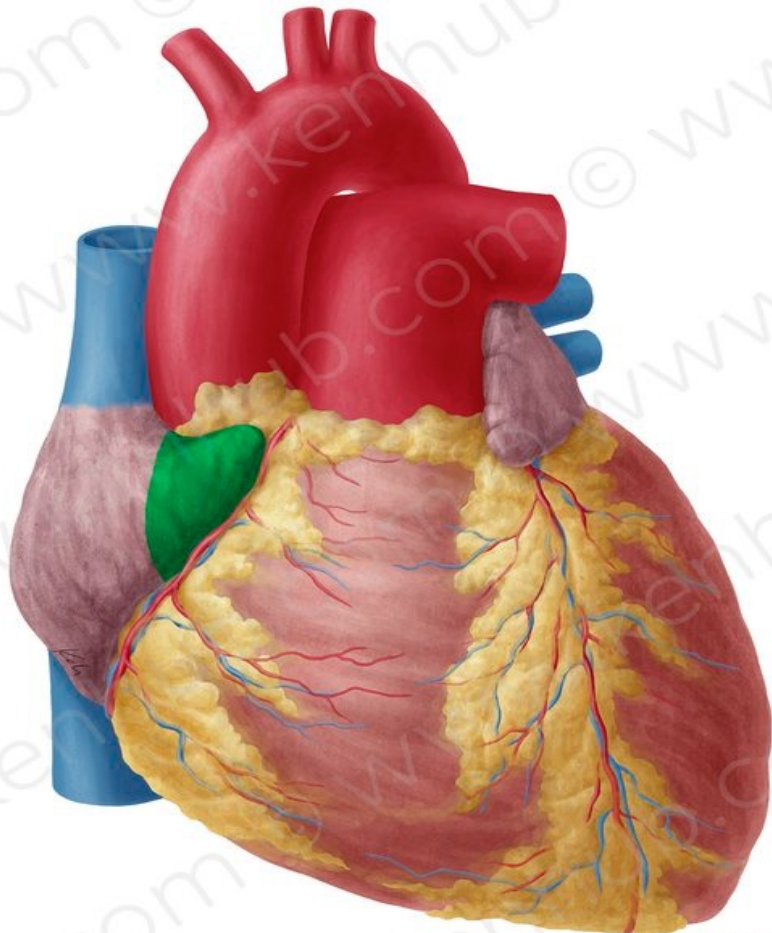
KEN  
HUB



**Smooth posterior part**

© www.kenhub.com

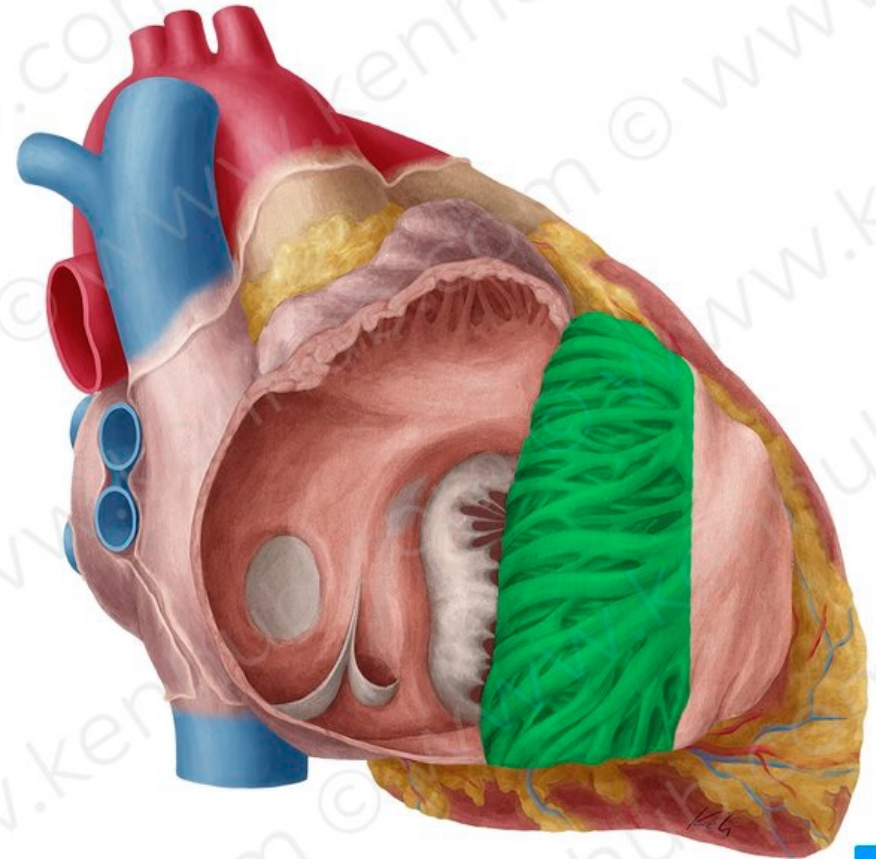
KEN  
HUB



© www.kenhub.com



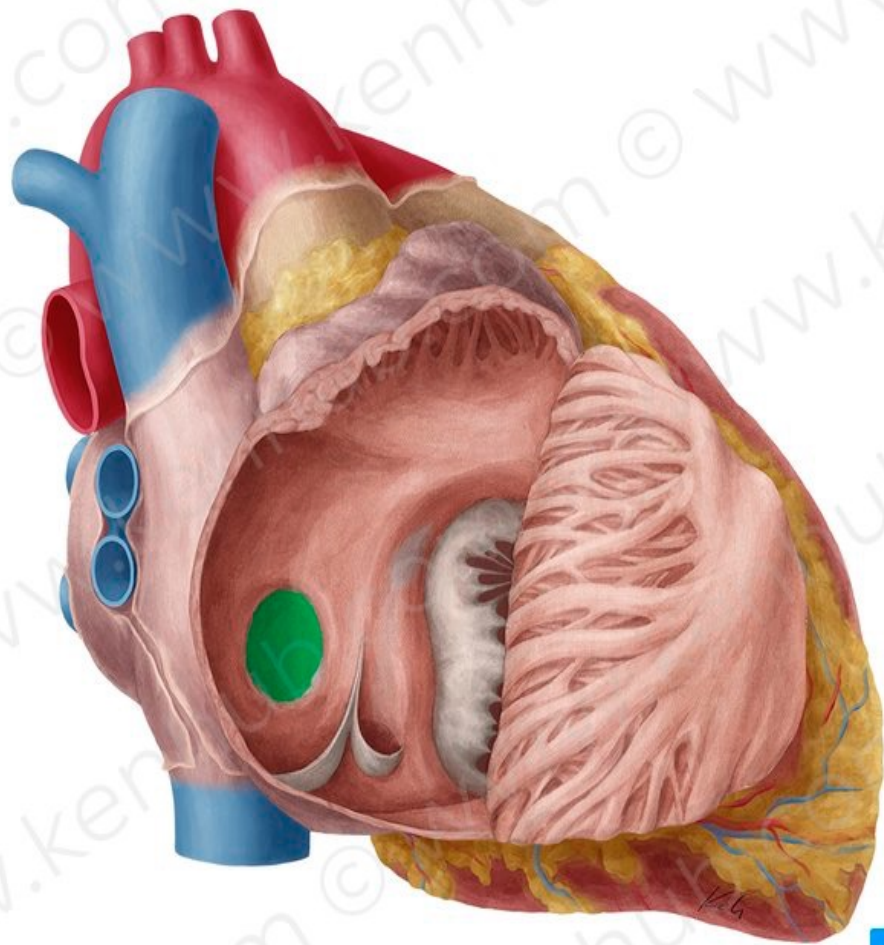
**The right auricle**



© www.kenhub.com

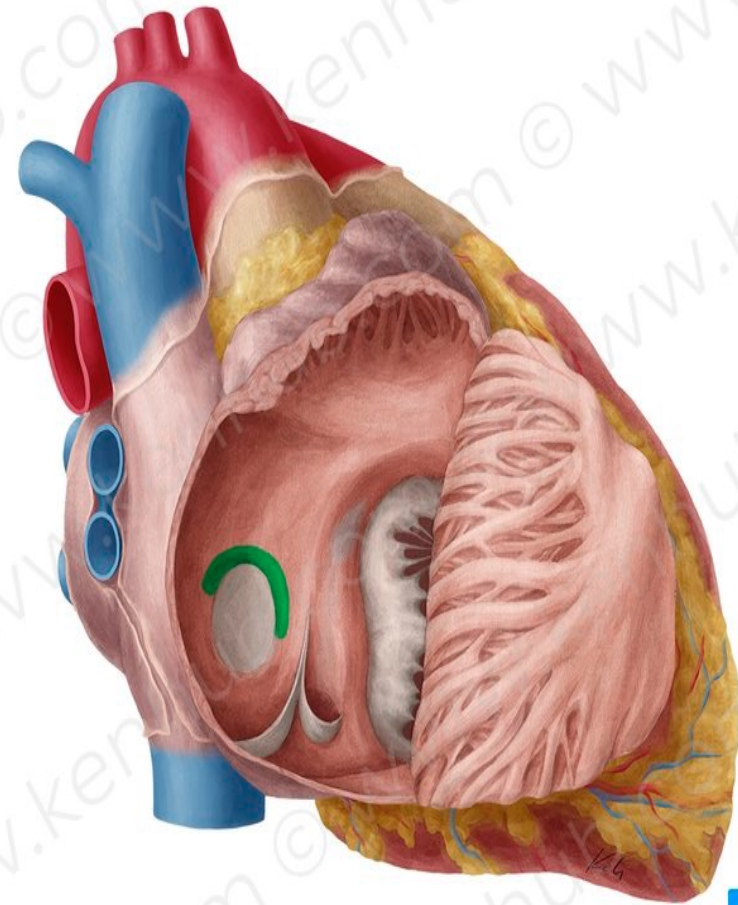


**(L. muscoli pectinati)**



**Fossa ovalis**

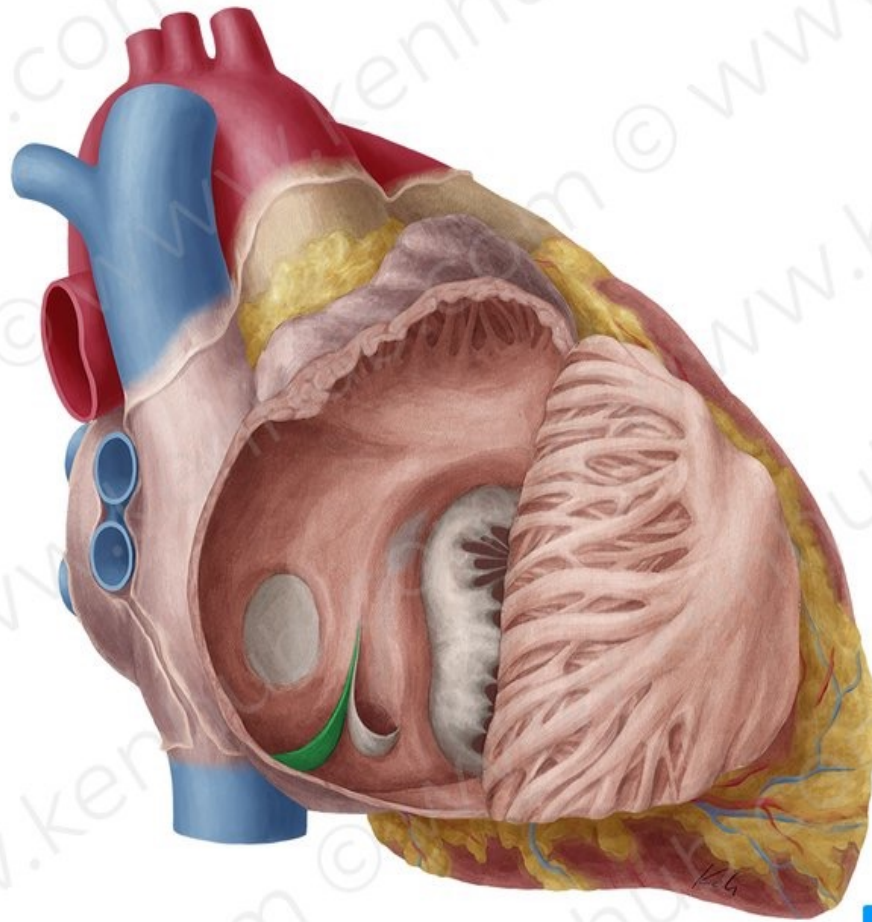
© www.kenhub.com



**Annulus ovalis**

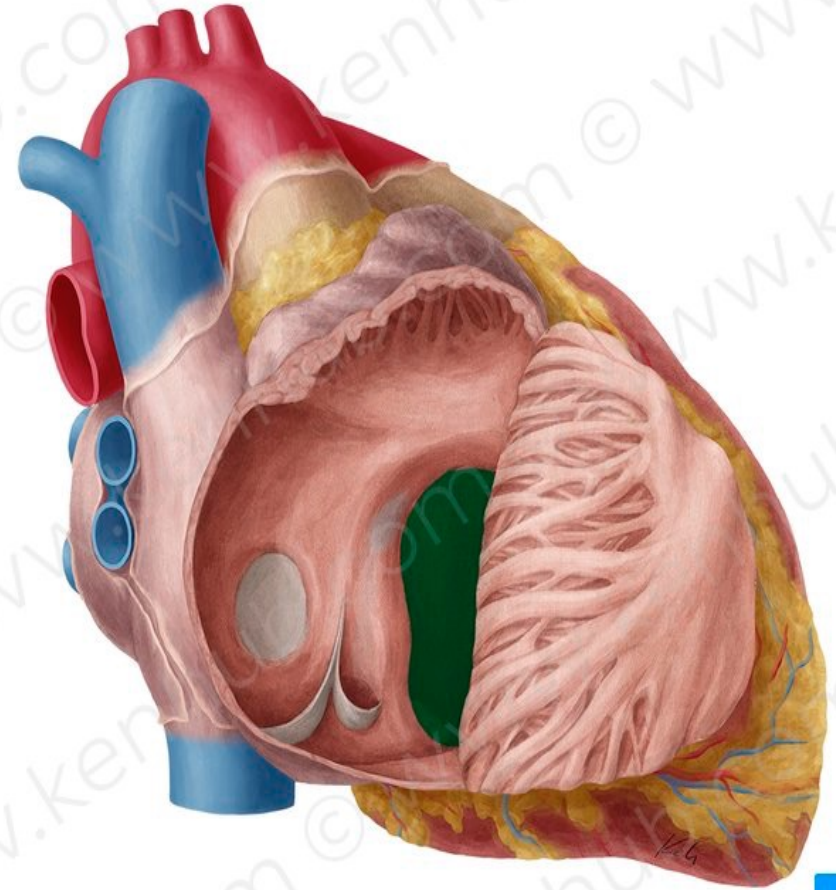
© www.kenhub.com





**Eustachian valve**

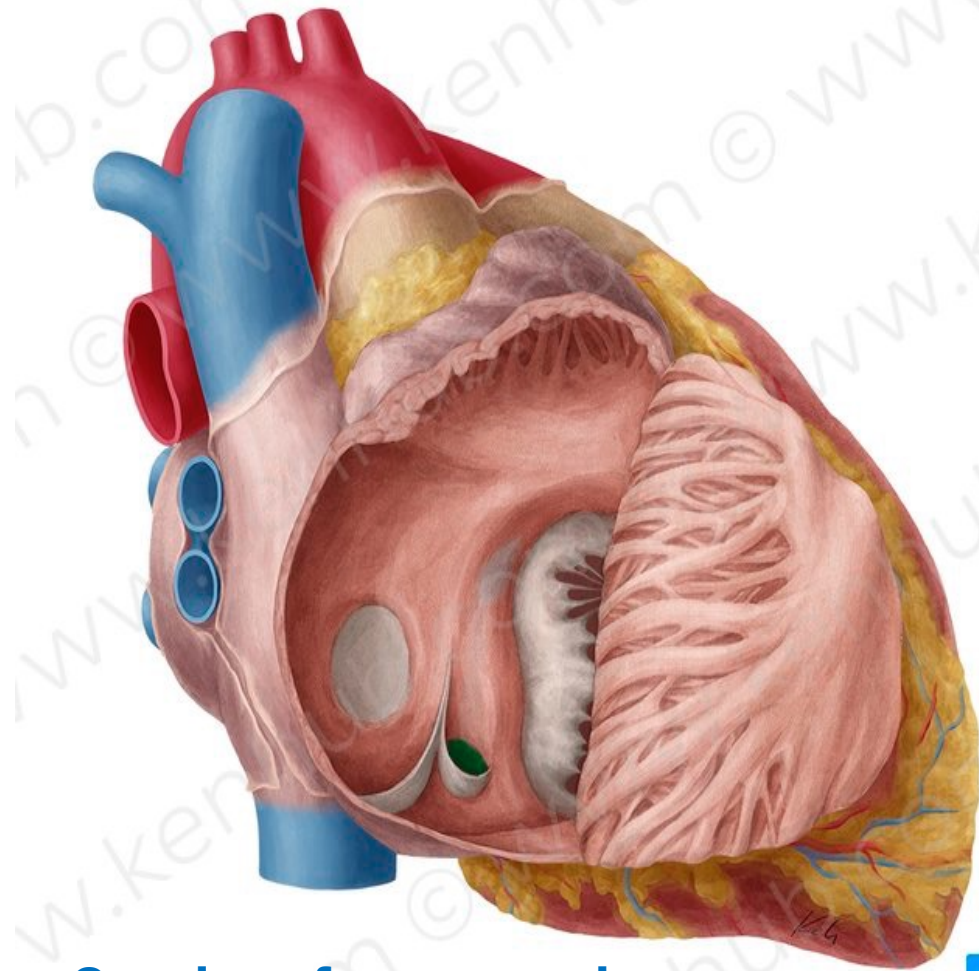
© www.kenhub.com



**Right atrioventricular orifice**

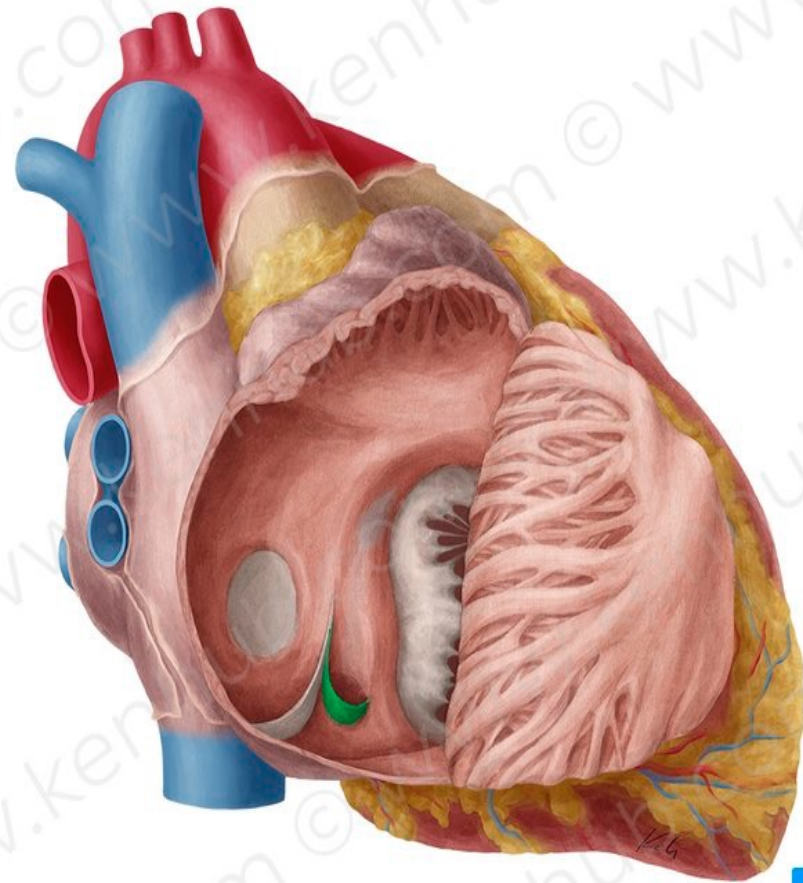
© www.kenhub.com





**Opening of coronary sinus**

© www.kenhub.com



**Thebesian valve**

© www.kenhub.com

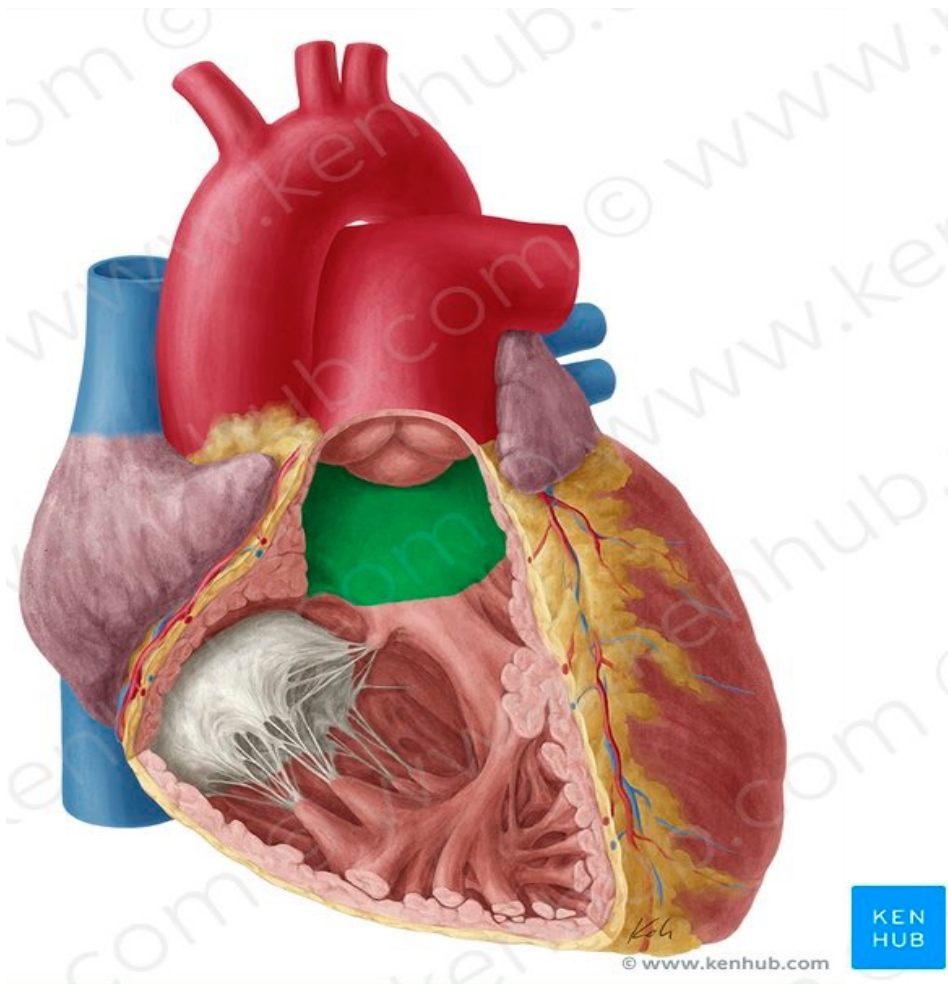




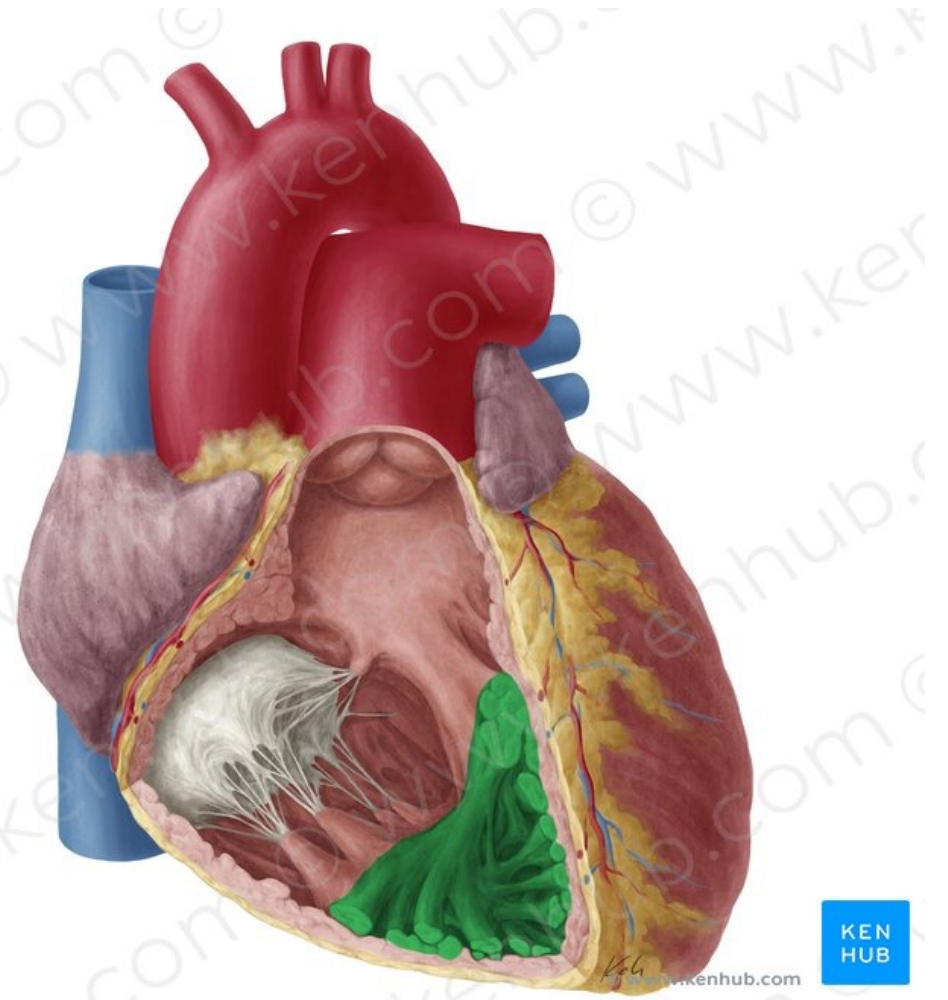
# Right ventricle

---

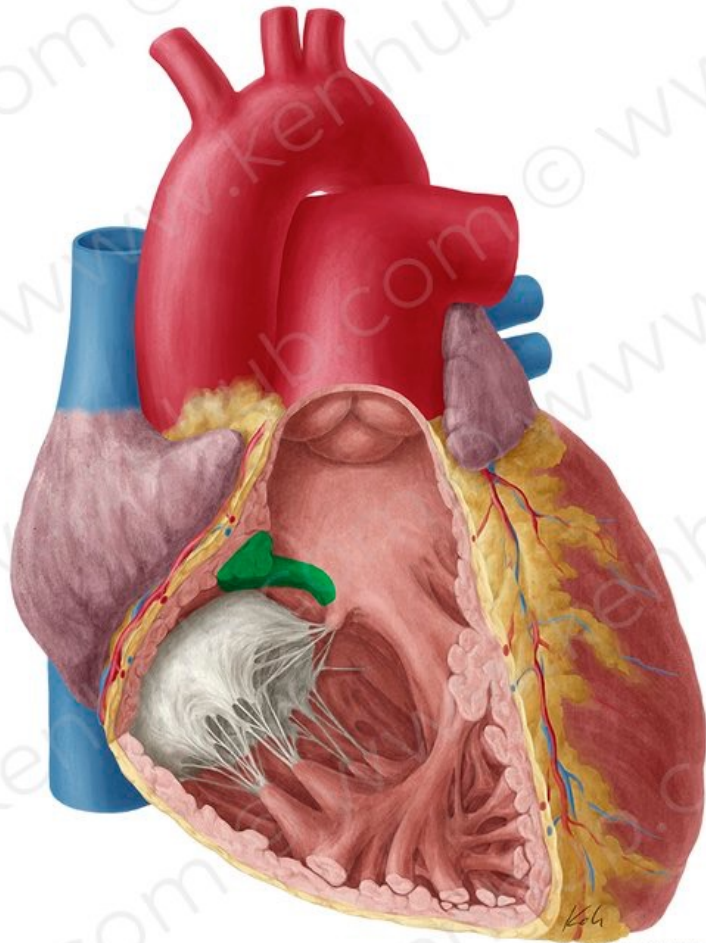




**Conus arteriosus**



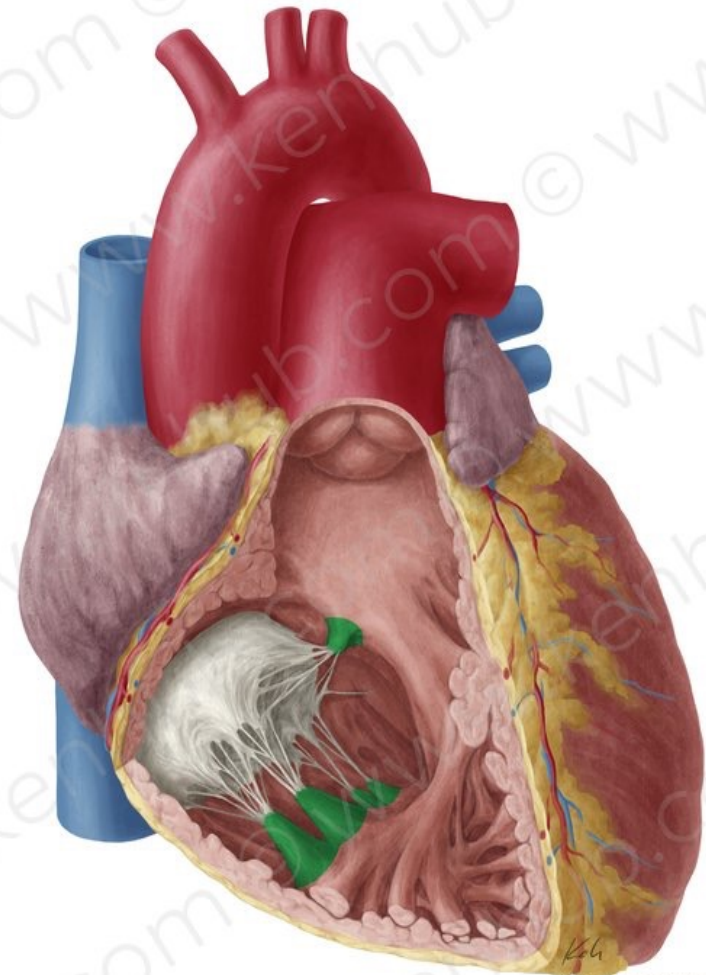
**Trabeculae carneae**



© www.kenhub.com



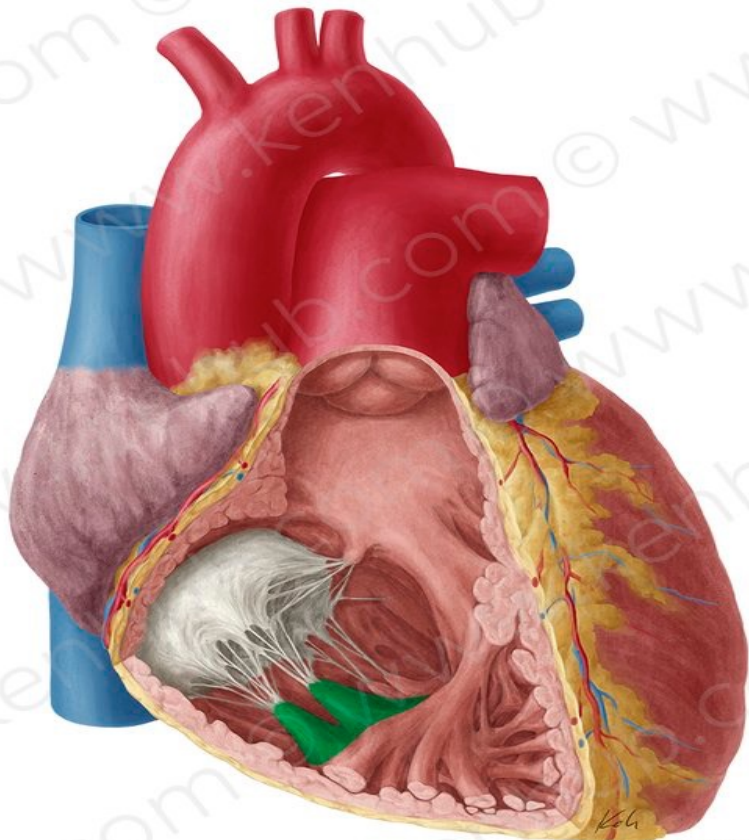
**supraventricular crest**



© www.kenhub.com



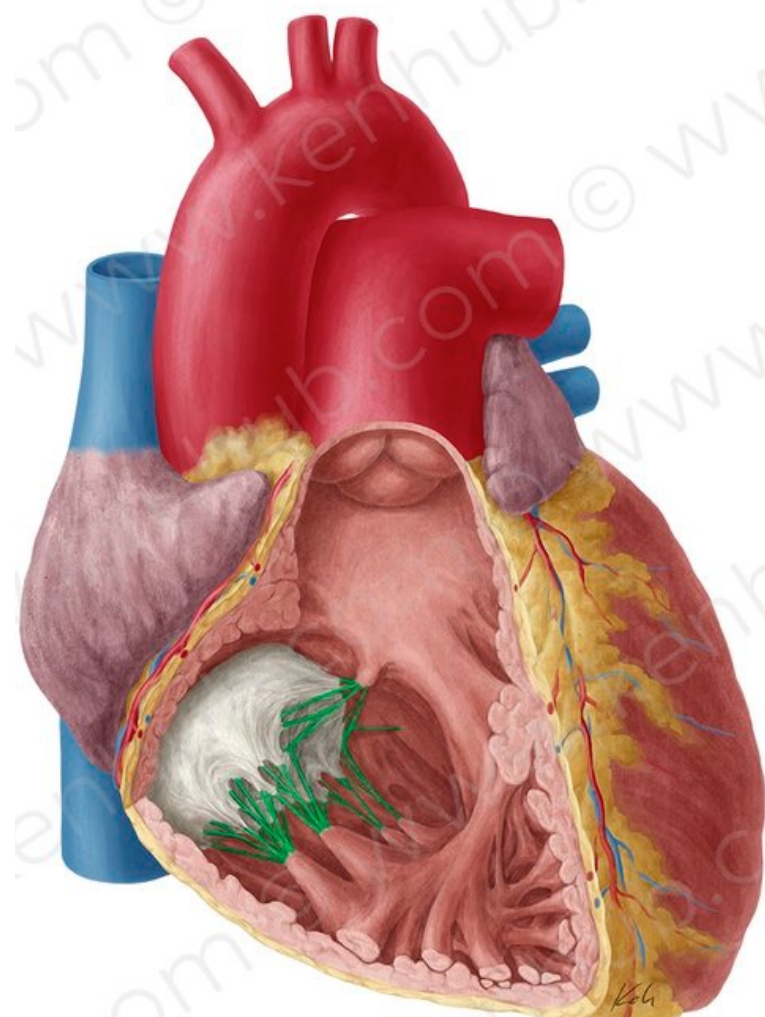
**Papillary muscles**



© www.kenhub.com



**The anterior papillary muscle**

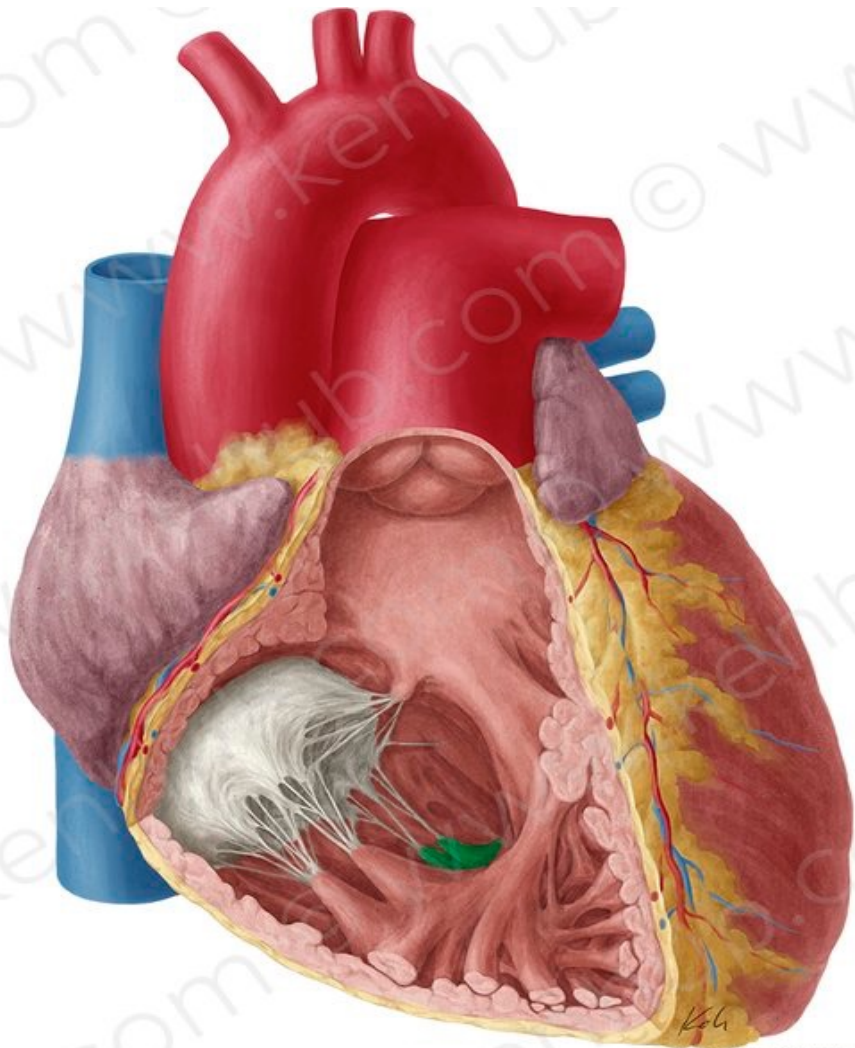


© www.kenhub.com



**Tendinous cords**

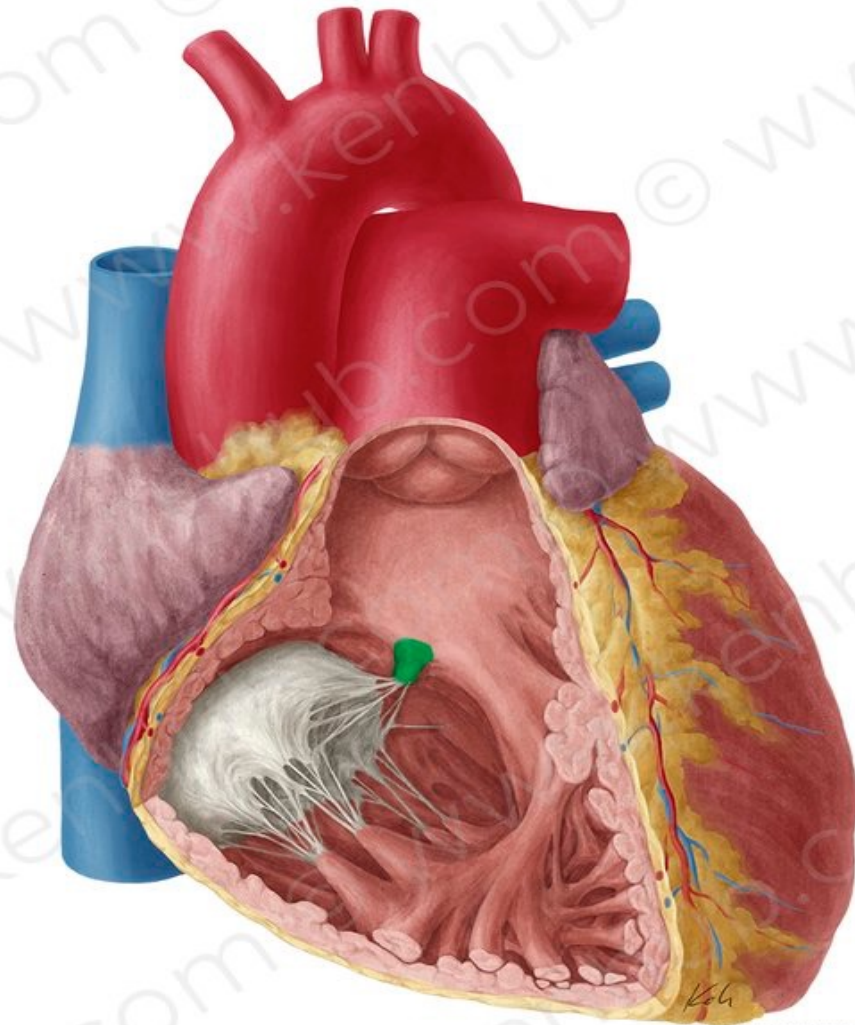




© www.kenhub.com



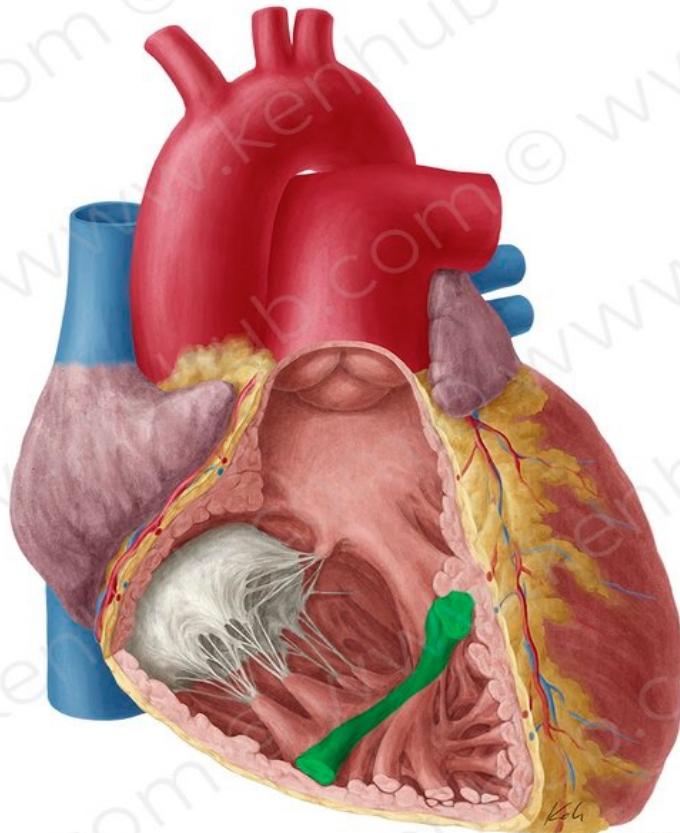
**Posterior papillary muscle**



© www.kenhub.com



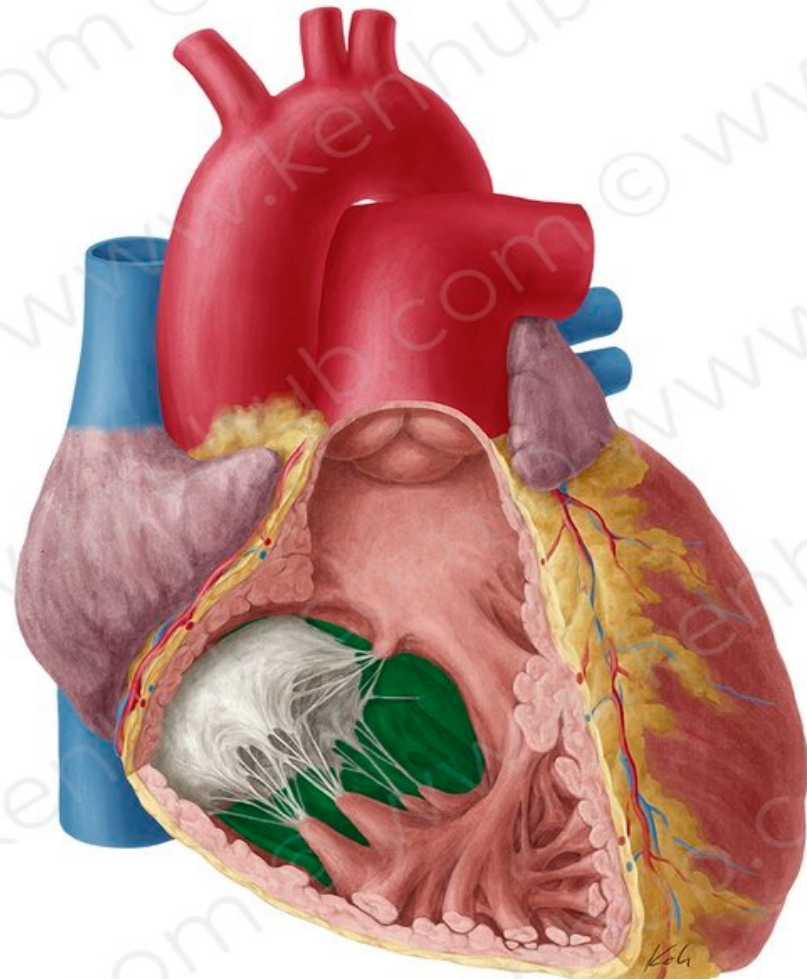
**Septal papillary muscle**



© www.kenhub.com



**Septo marginal trabecula  
(moderator band)**



© www.kenhub.com

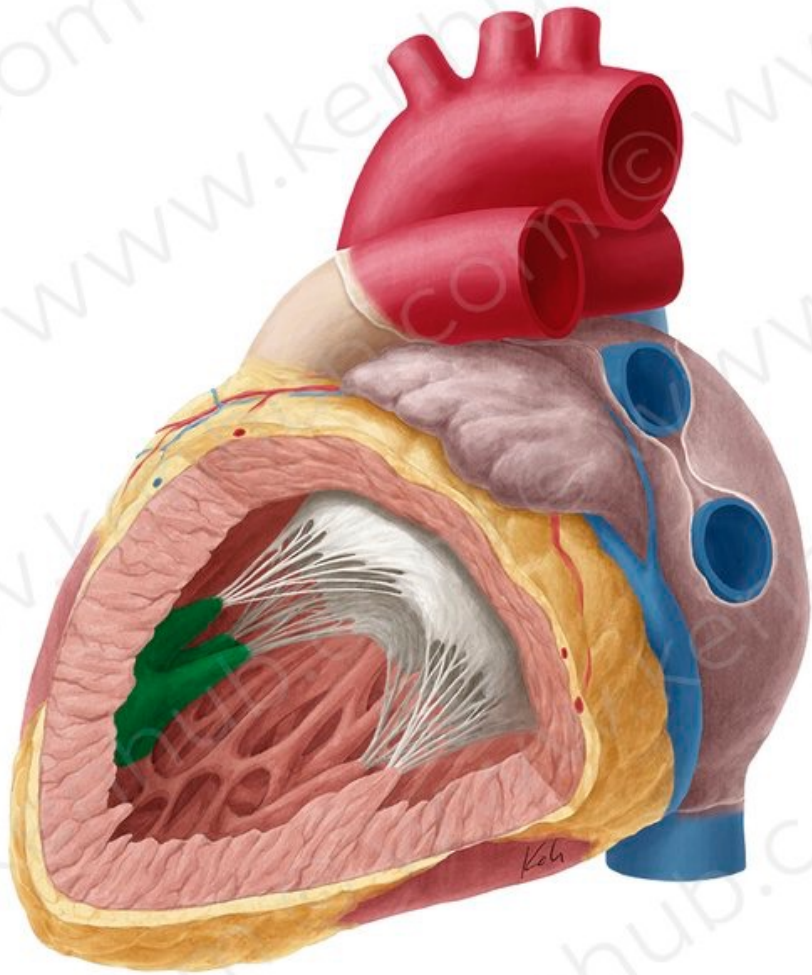


**The interventricular septum**

# Left Ventricle

---

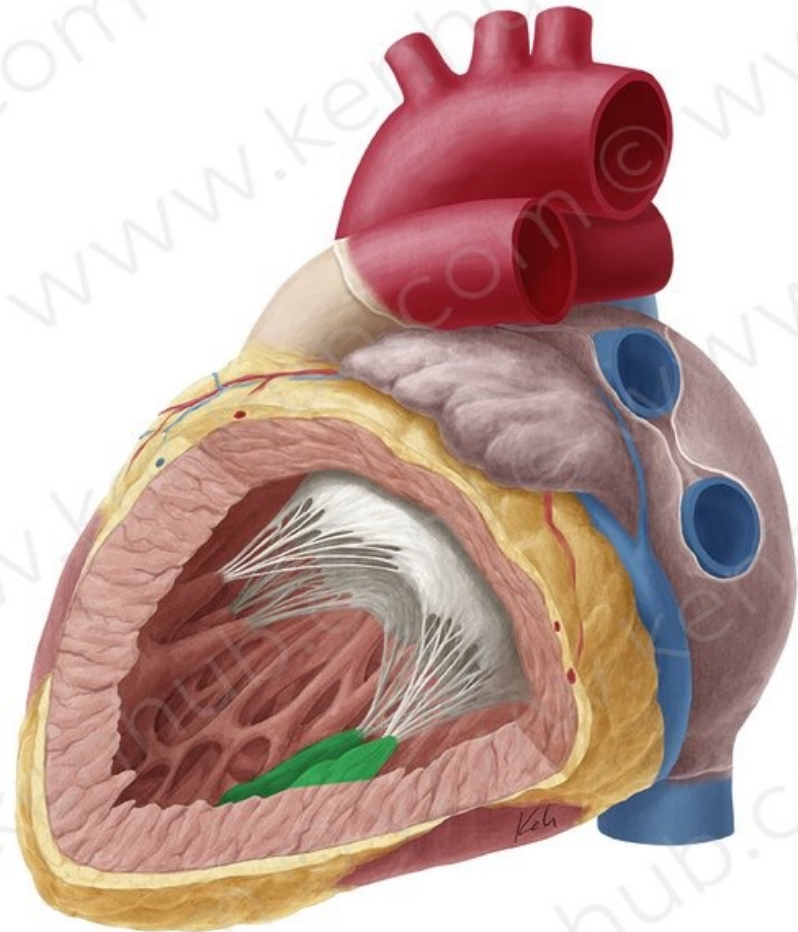




© www.kenhub.com

KEN  
HUB

**Anterior papillary muscles**



© www.kenhub.com

KEN  
HUB

**Posterior papillary muscles**



# Heart Valves

---

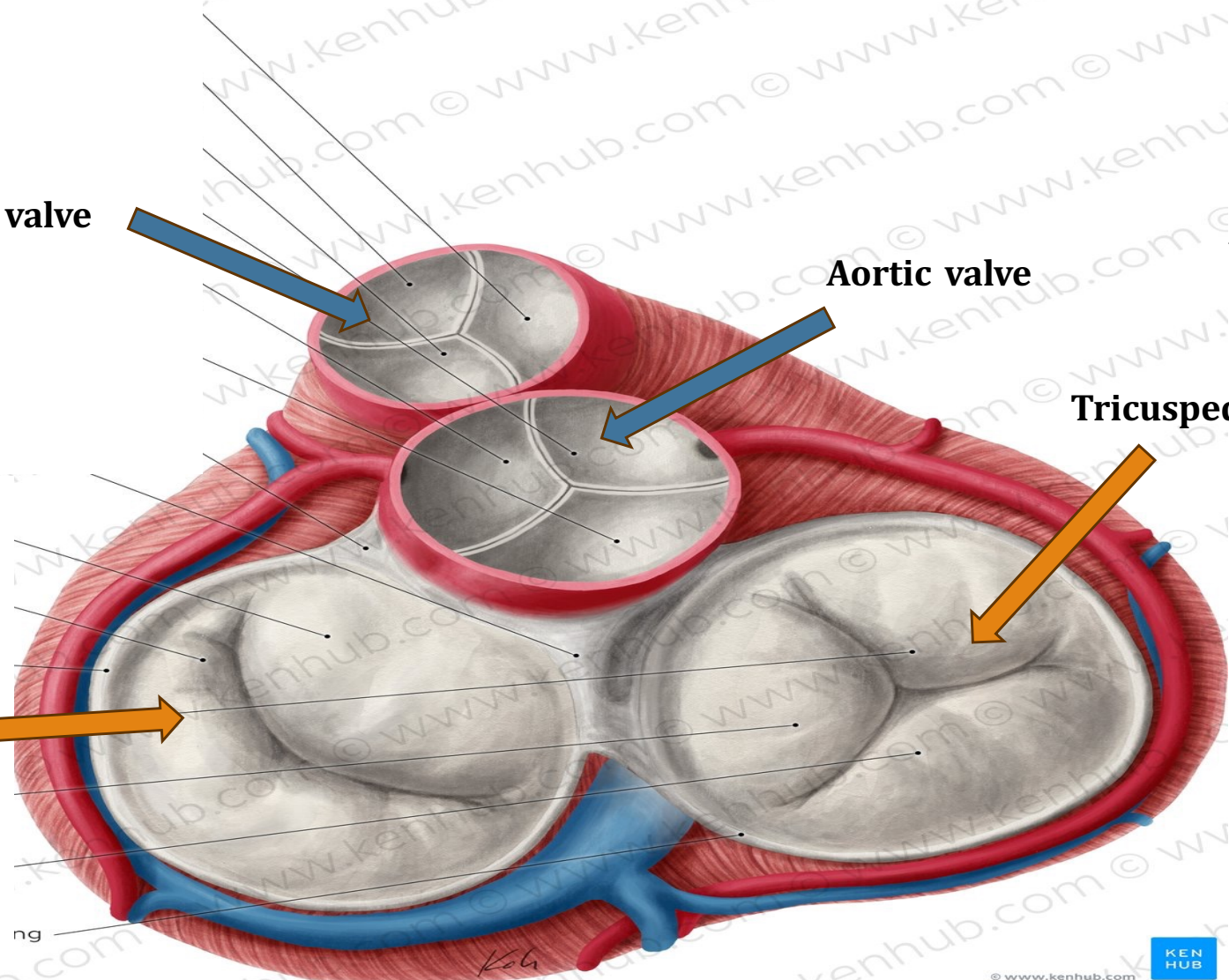


**Pulmonary valve**

**Aortic valve**

**Tricuspid Valve**

**Mitral Valve**



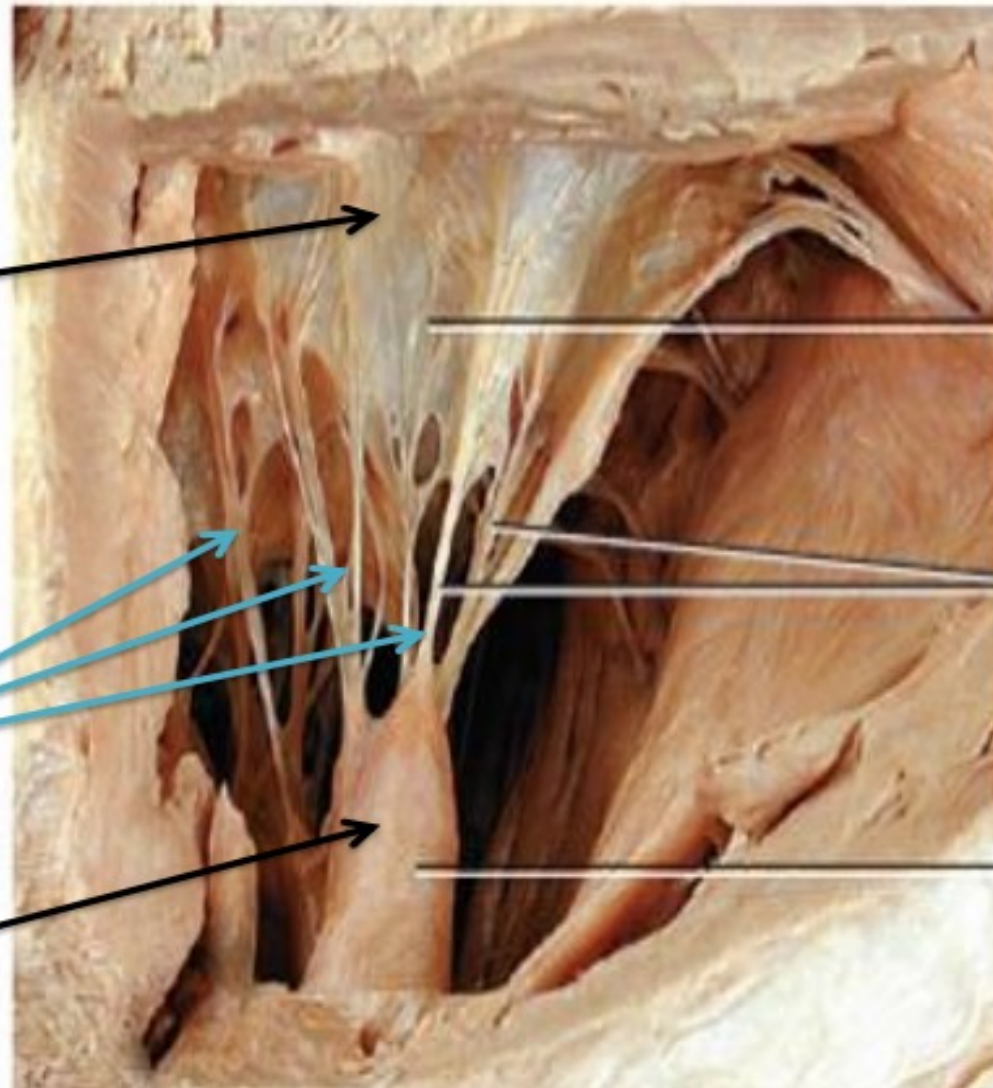
ng

## **The Tricuspid Valve**

**The cusps**

**The chordae tendineae.**

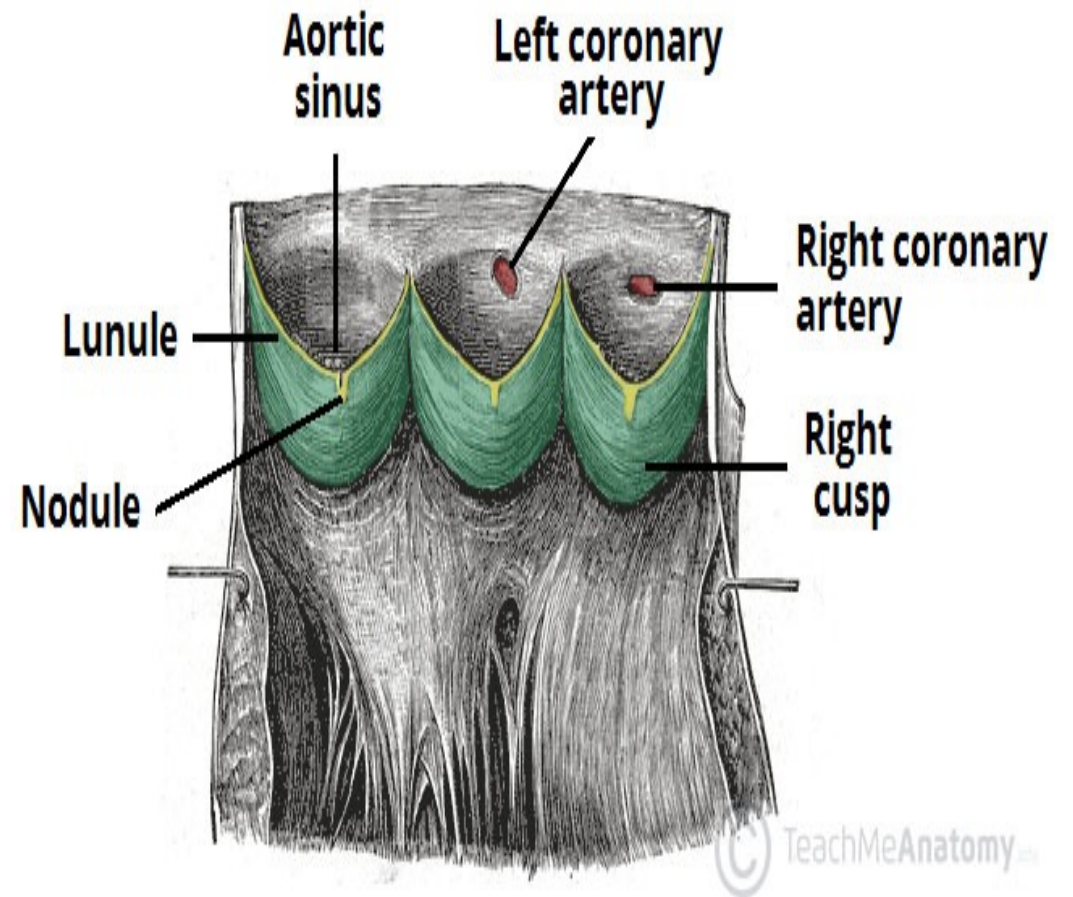
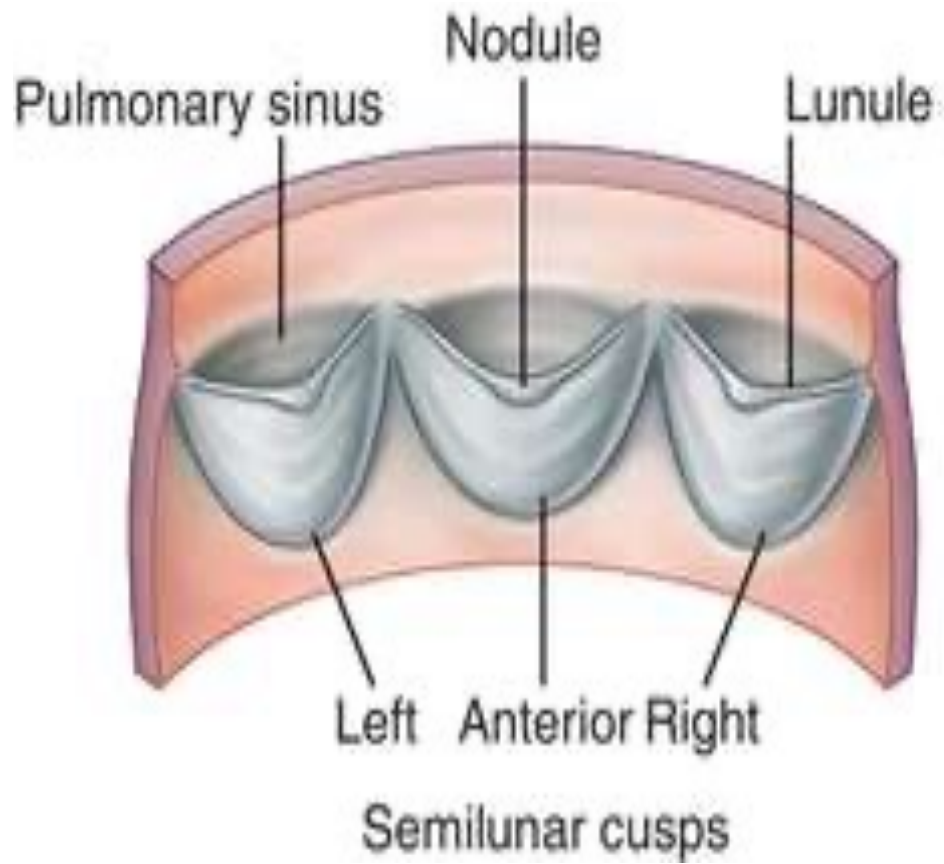
**papillary muscles**

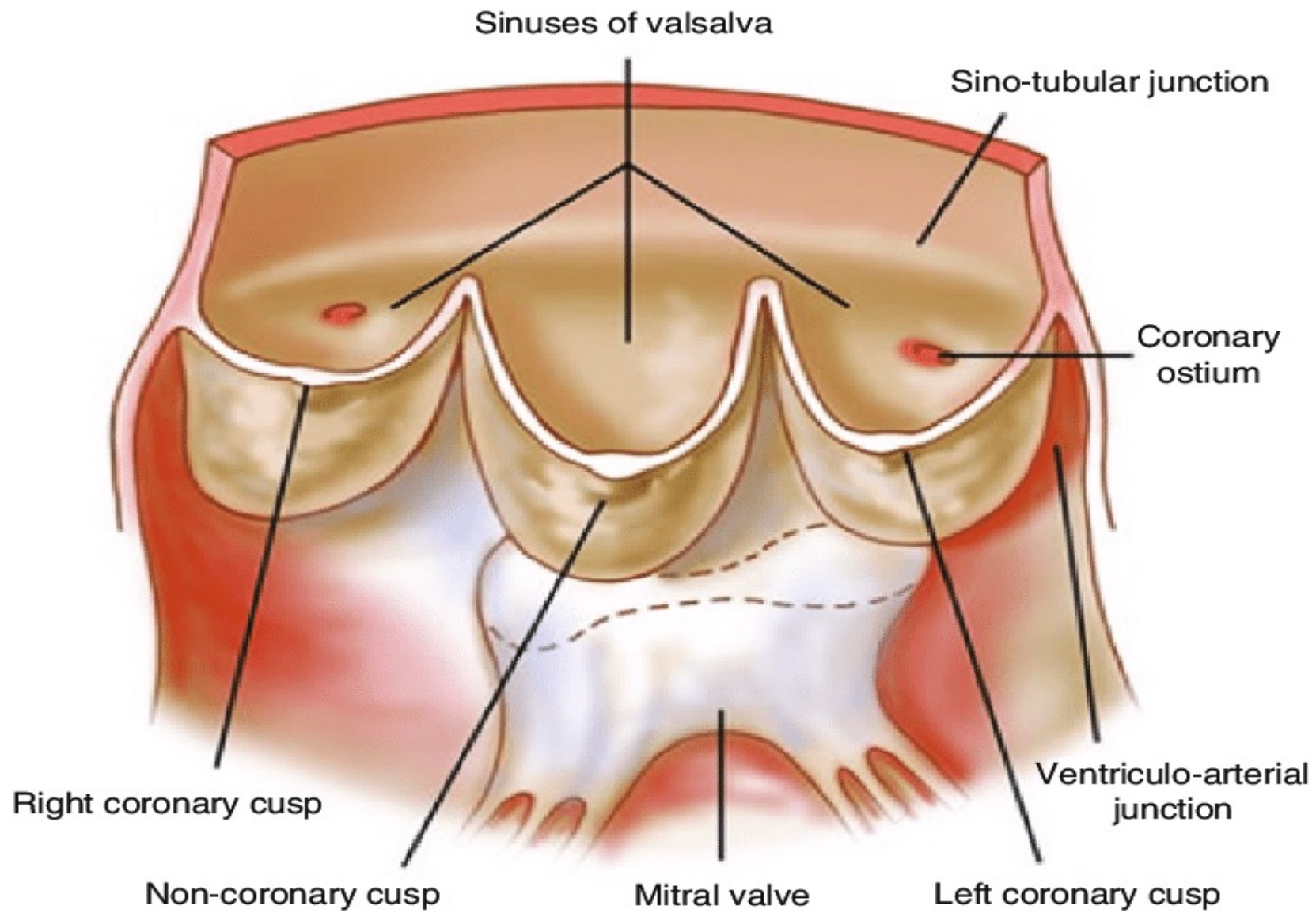


Cusp of tricuspid valve

Chordae tendineae

Papillary muscle





# Conductive System

---



## The electrical system of the heart

