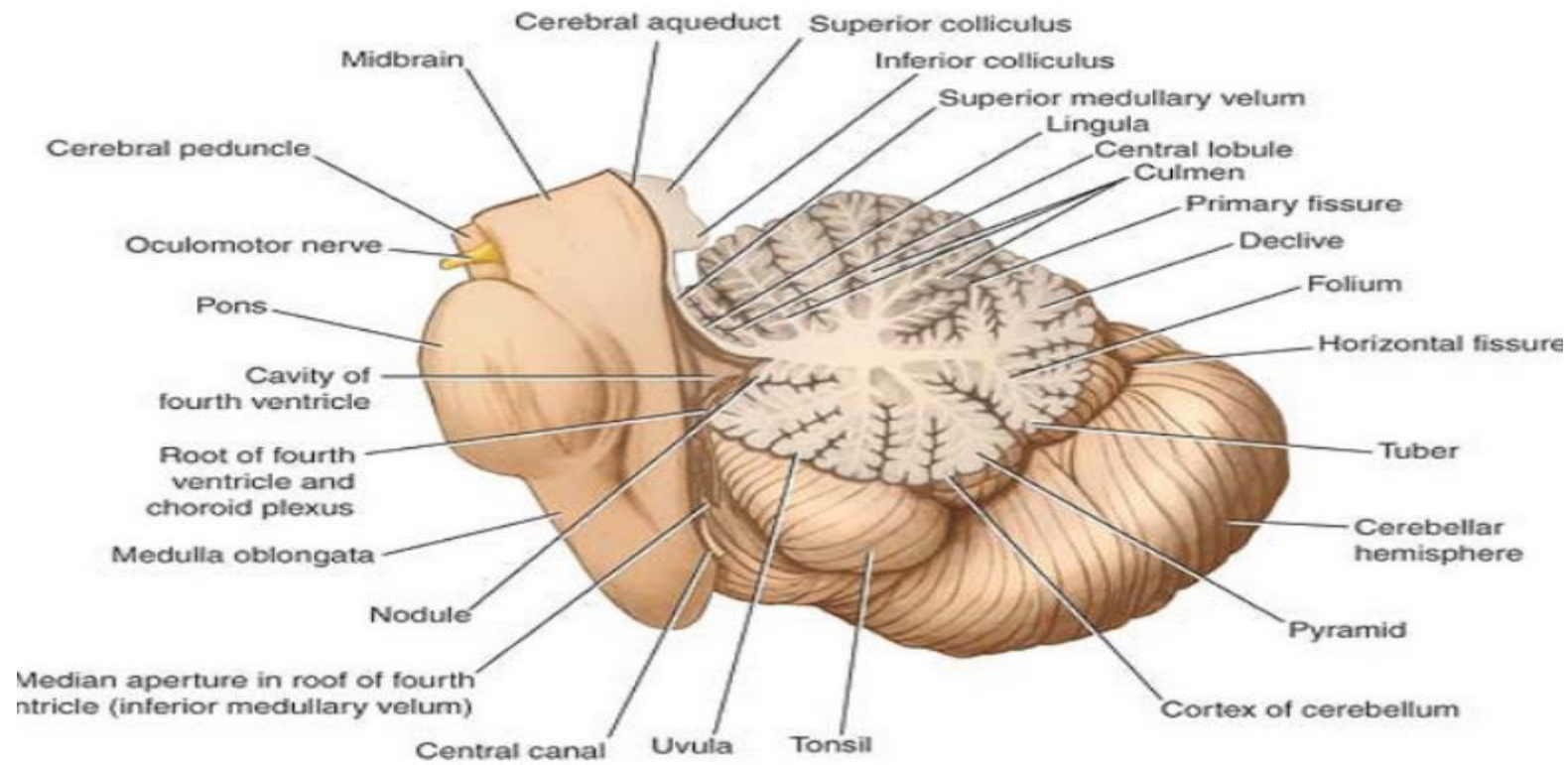


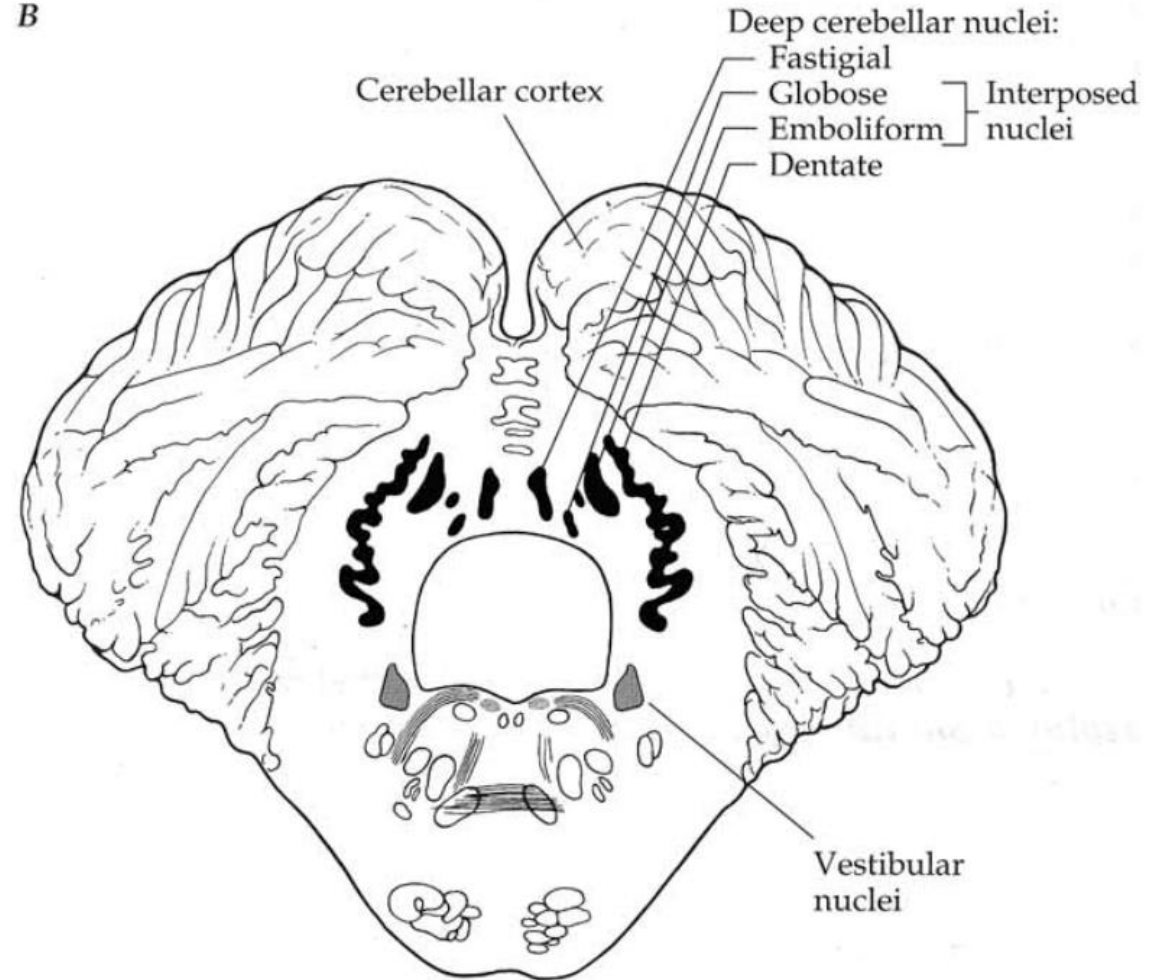
Lab Anatomy

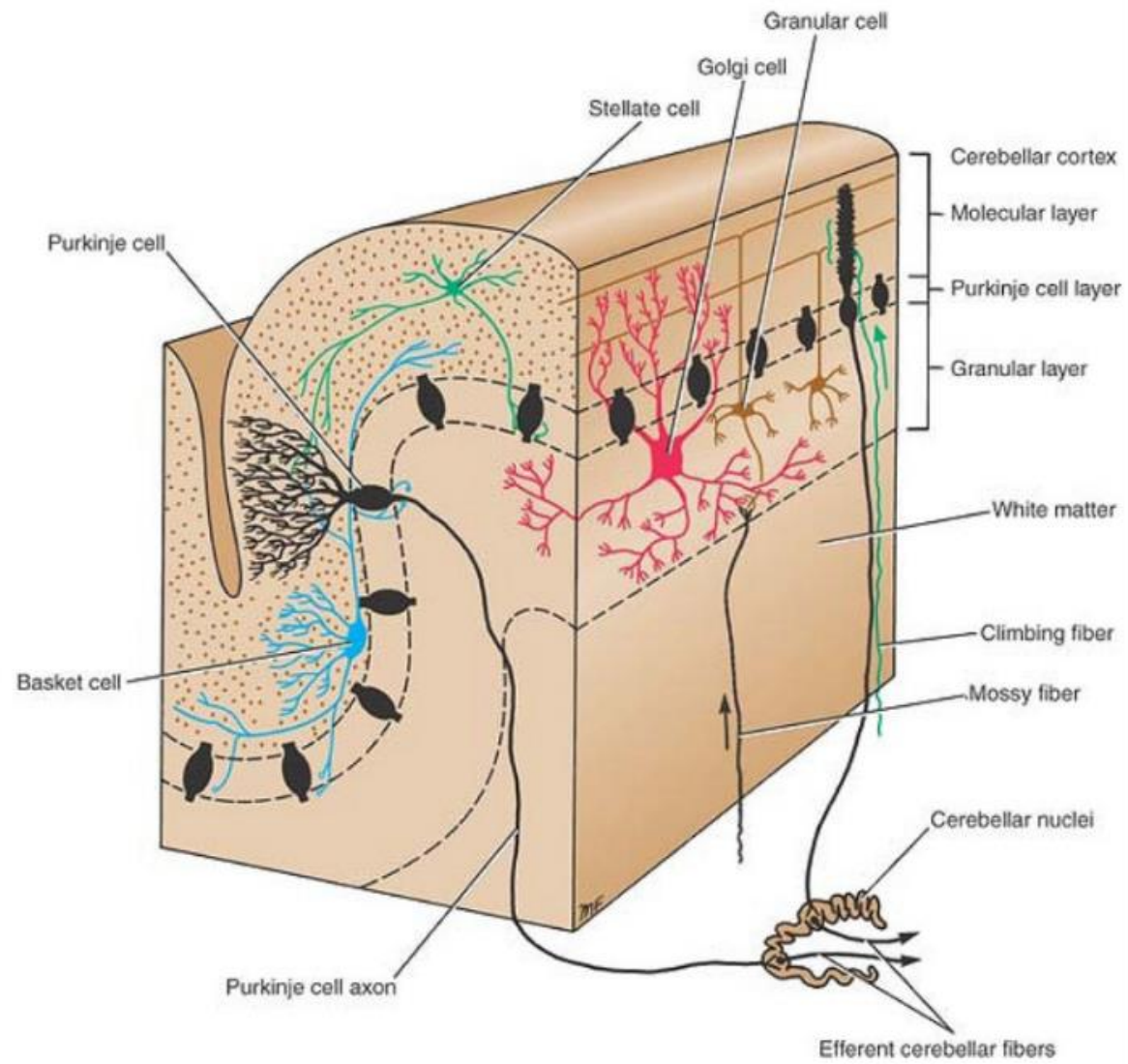
cerebellum

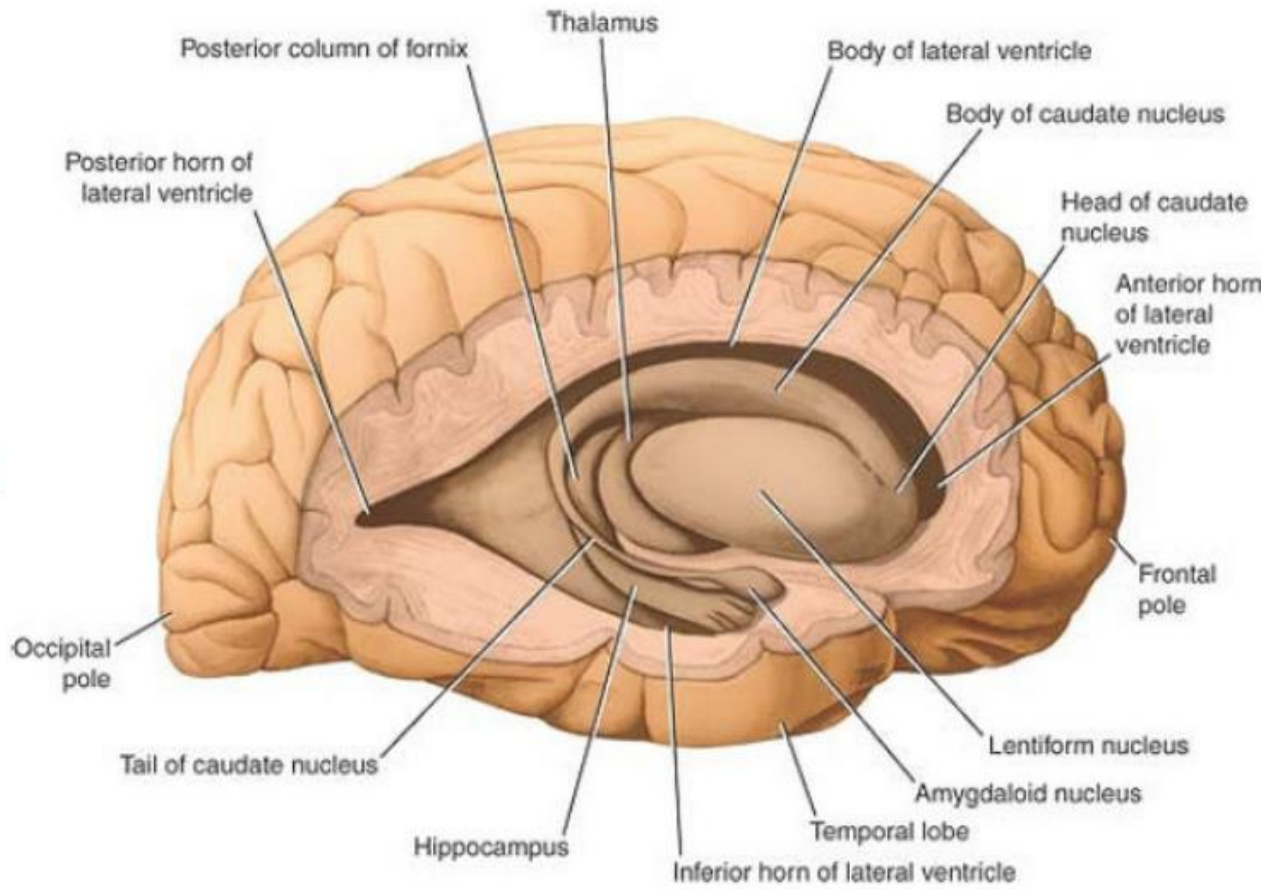


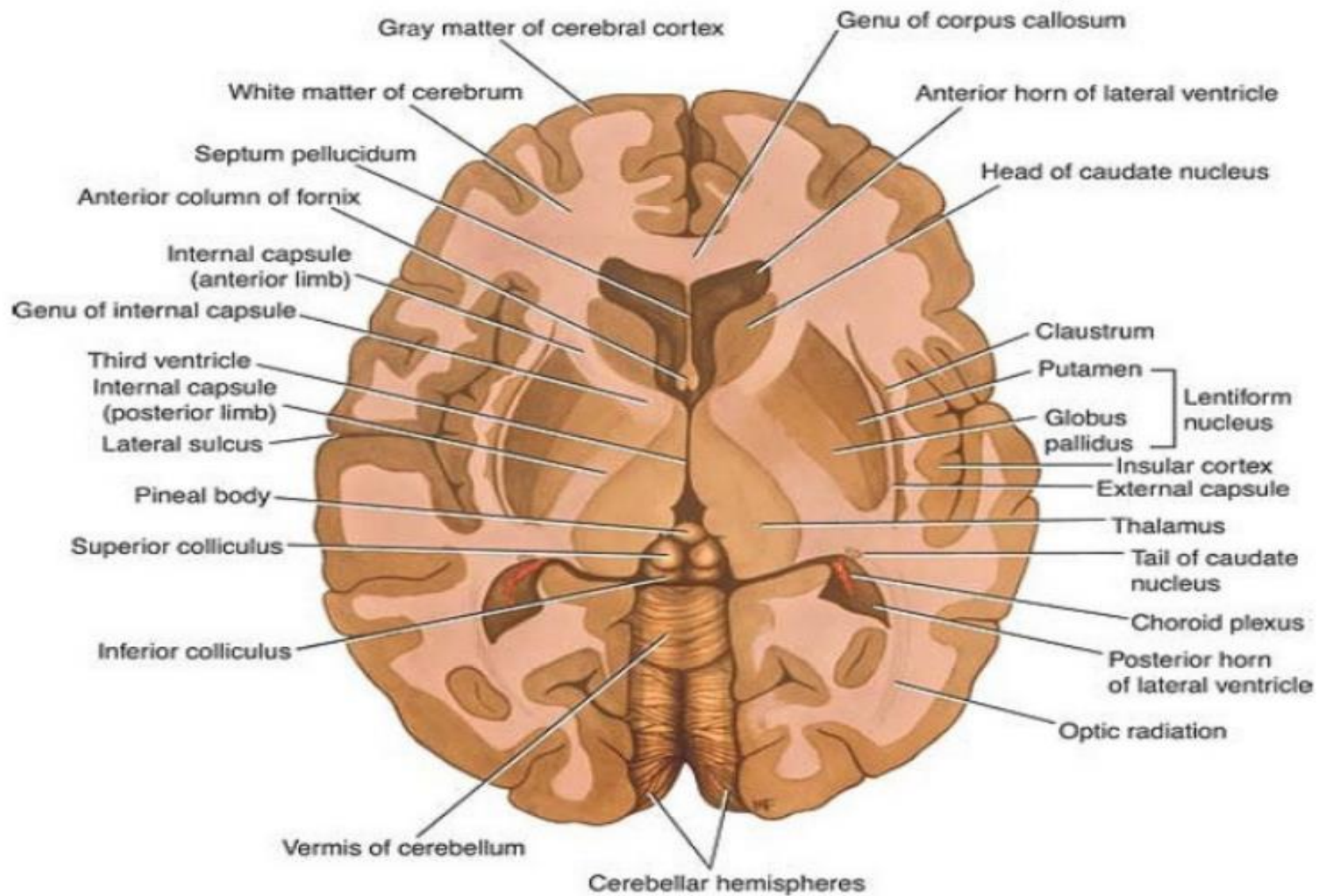
Deep cerebellar Nuclei

B

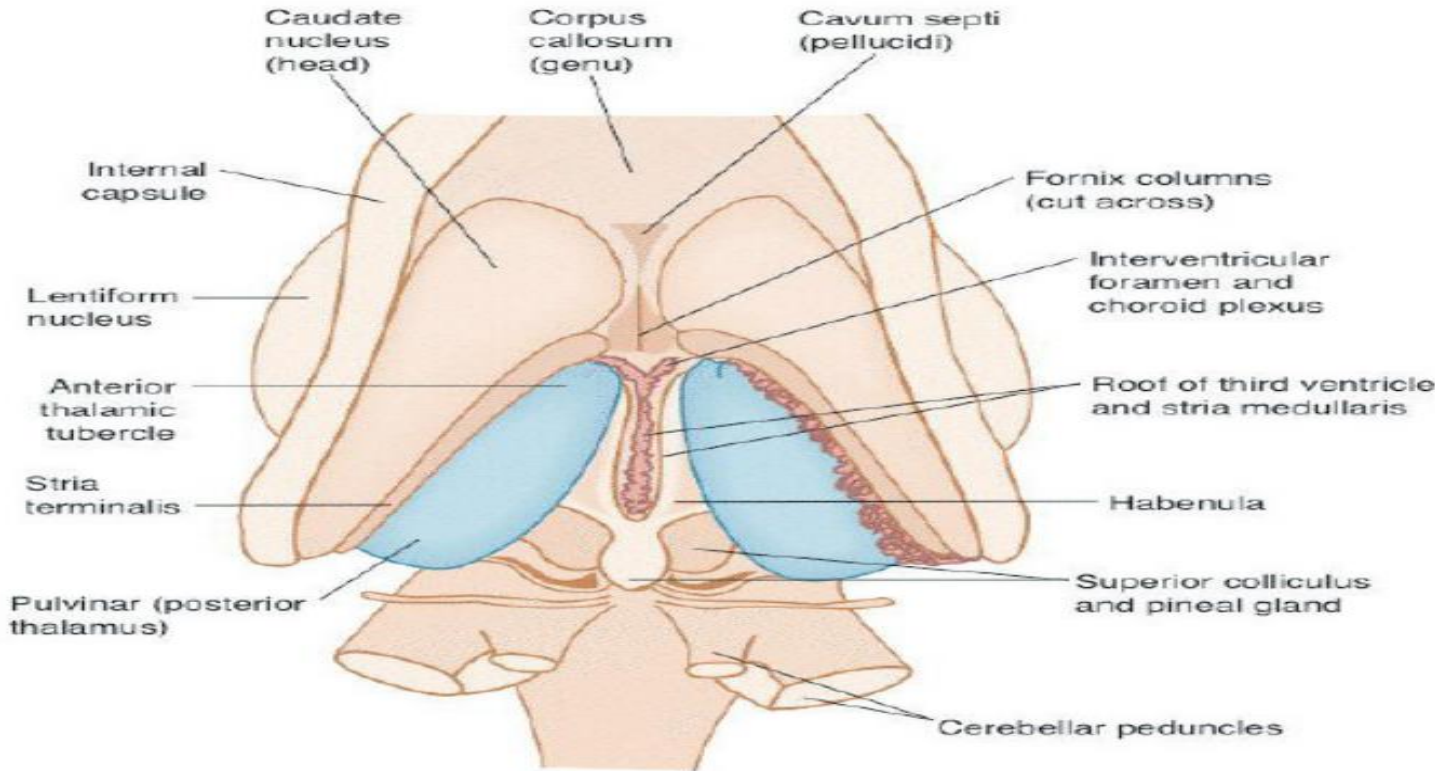


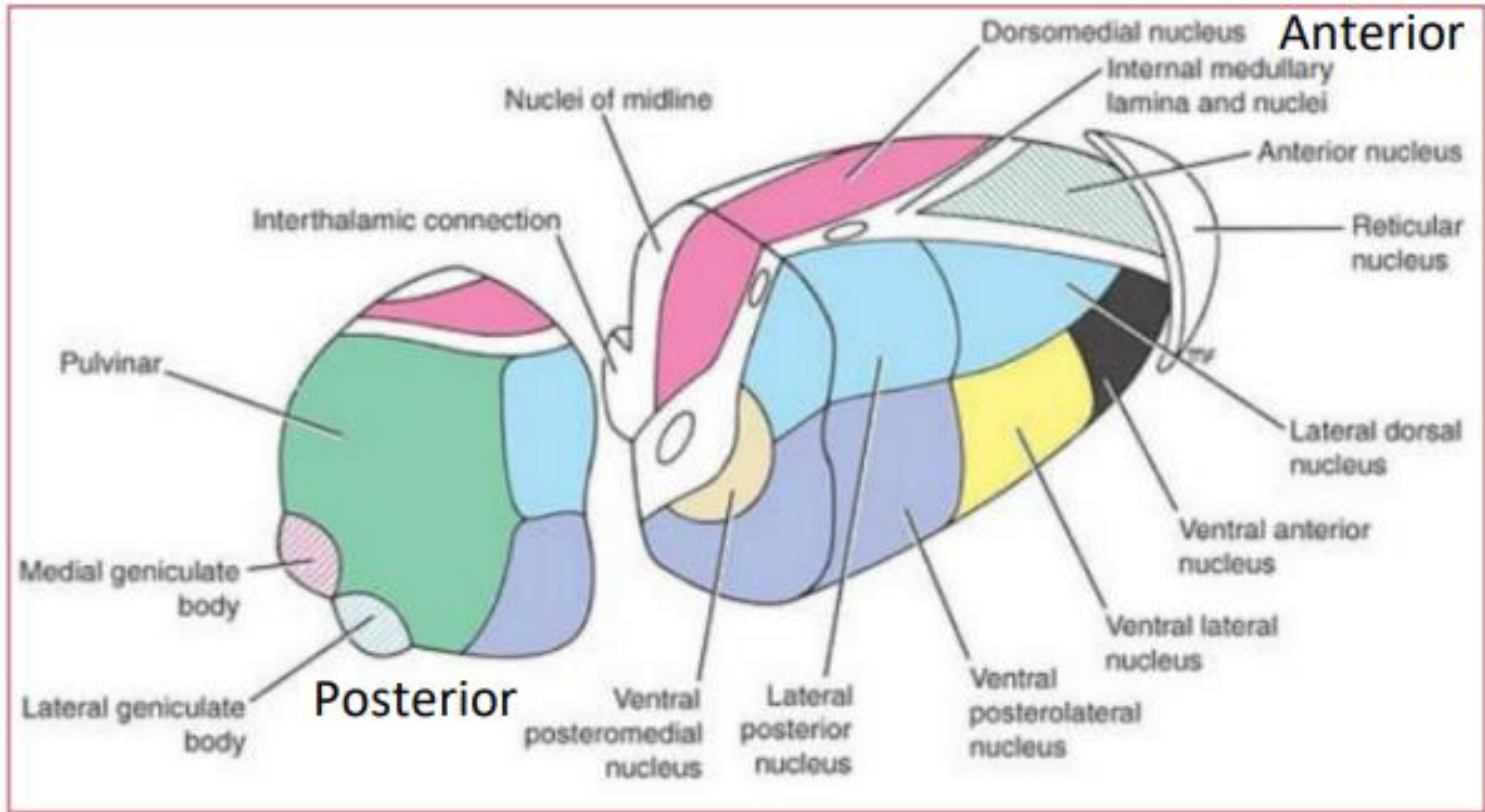




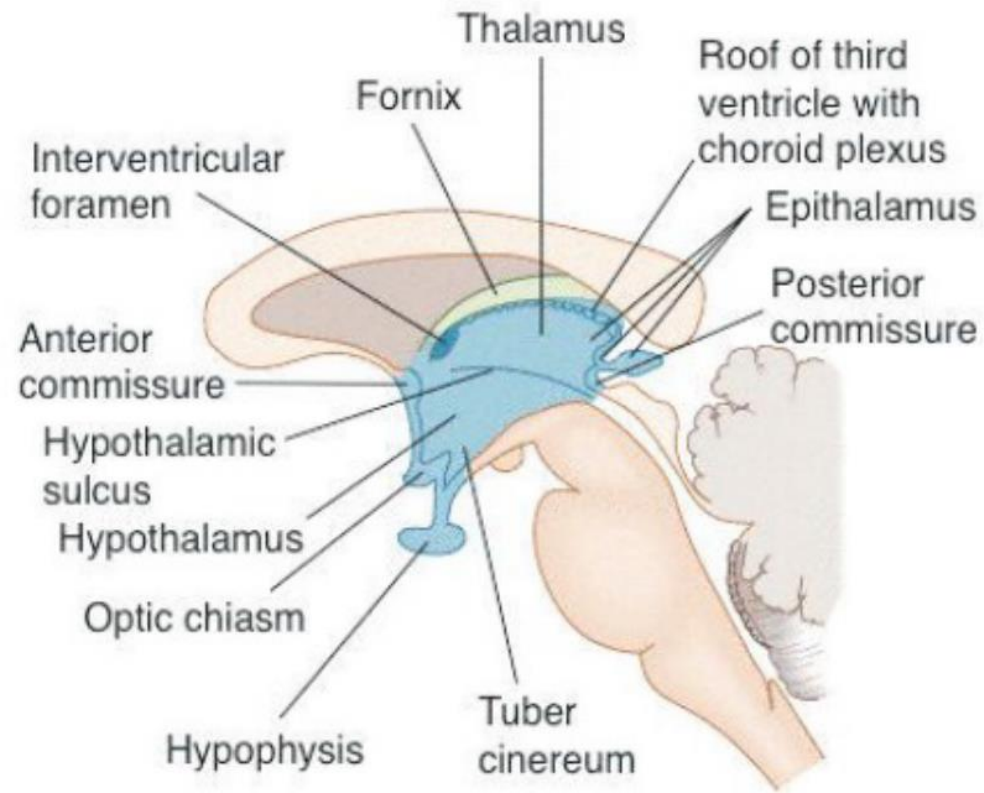


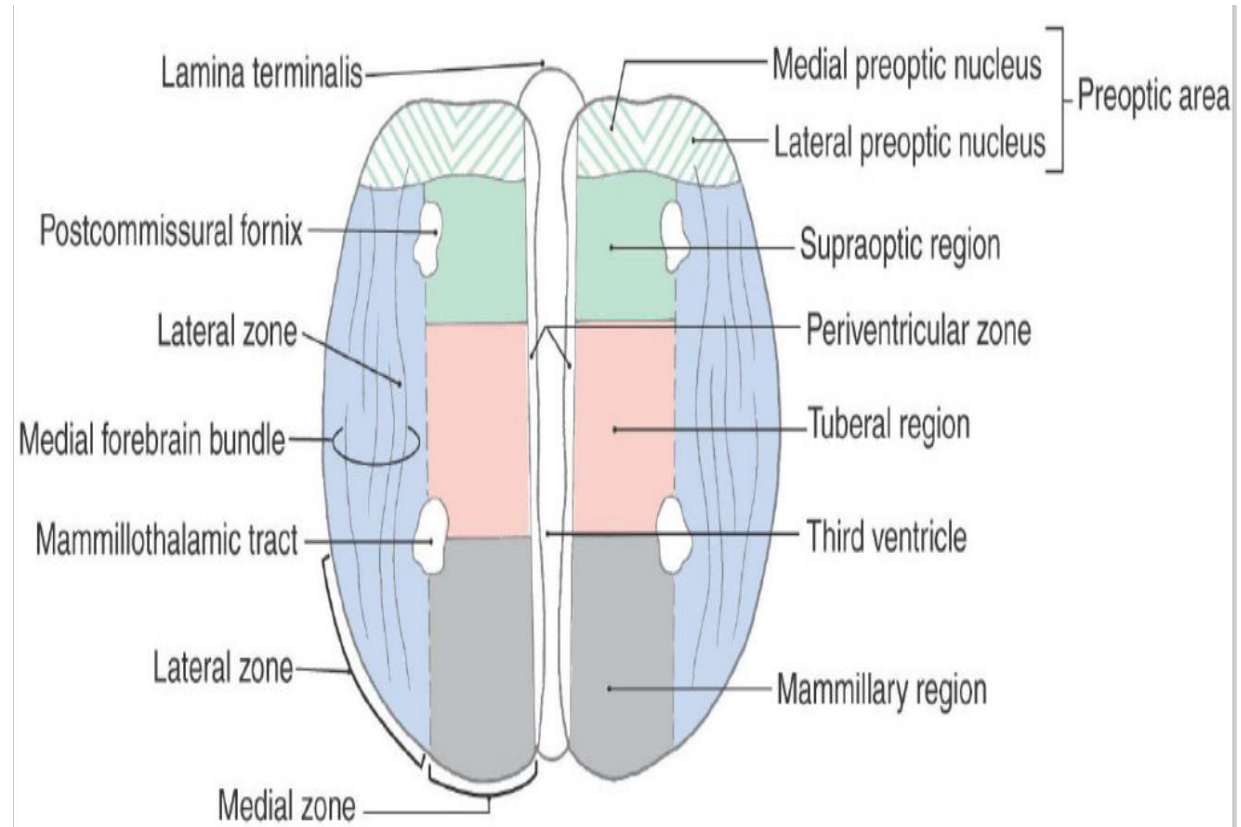
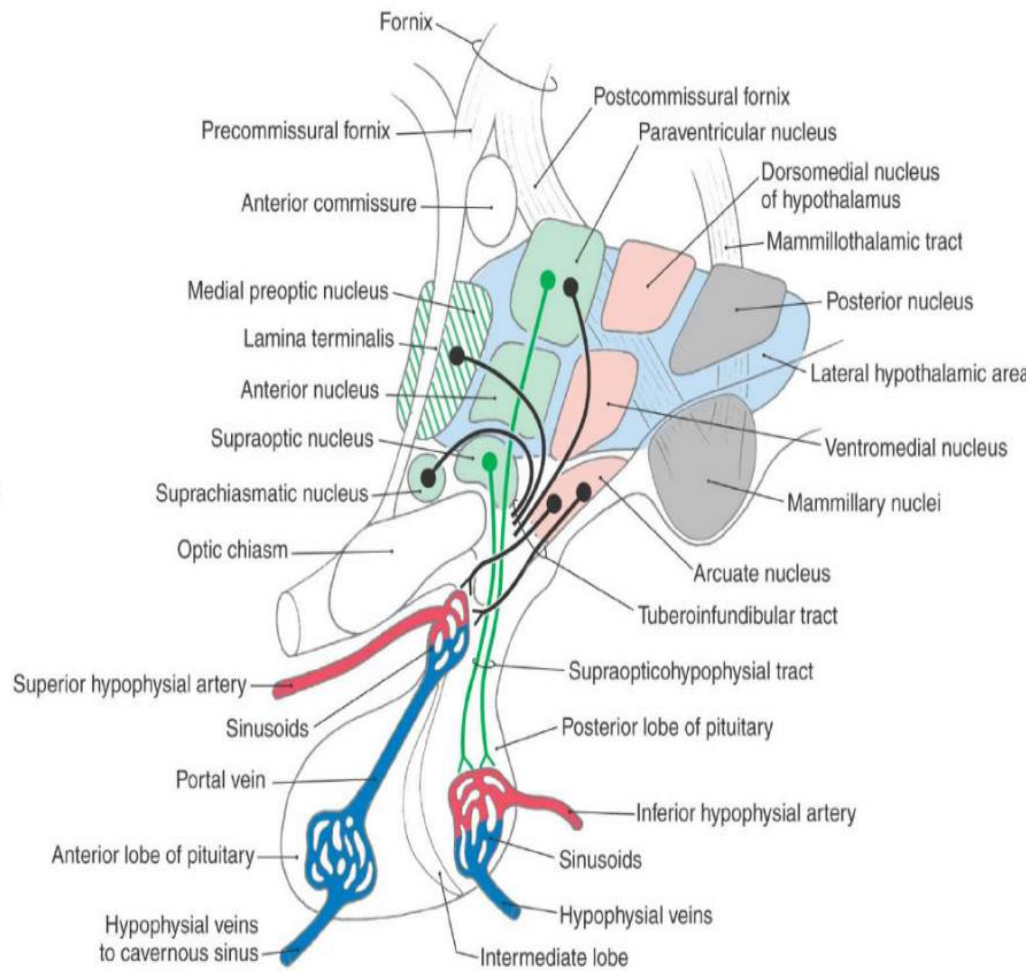
thalamus



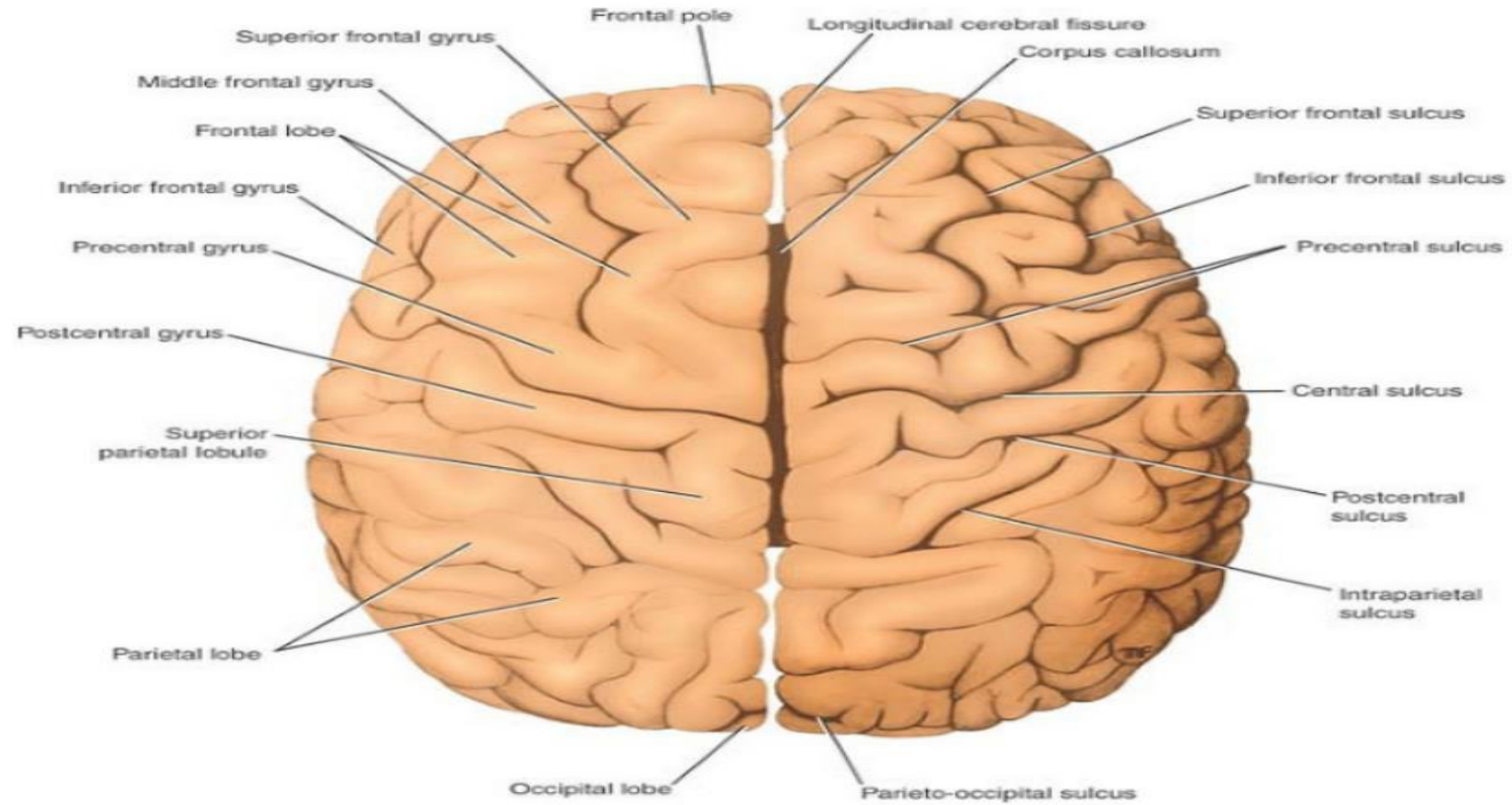


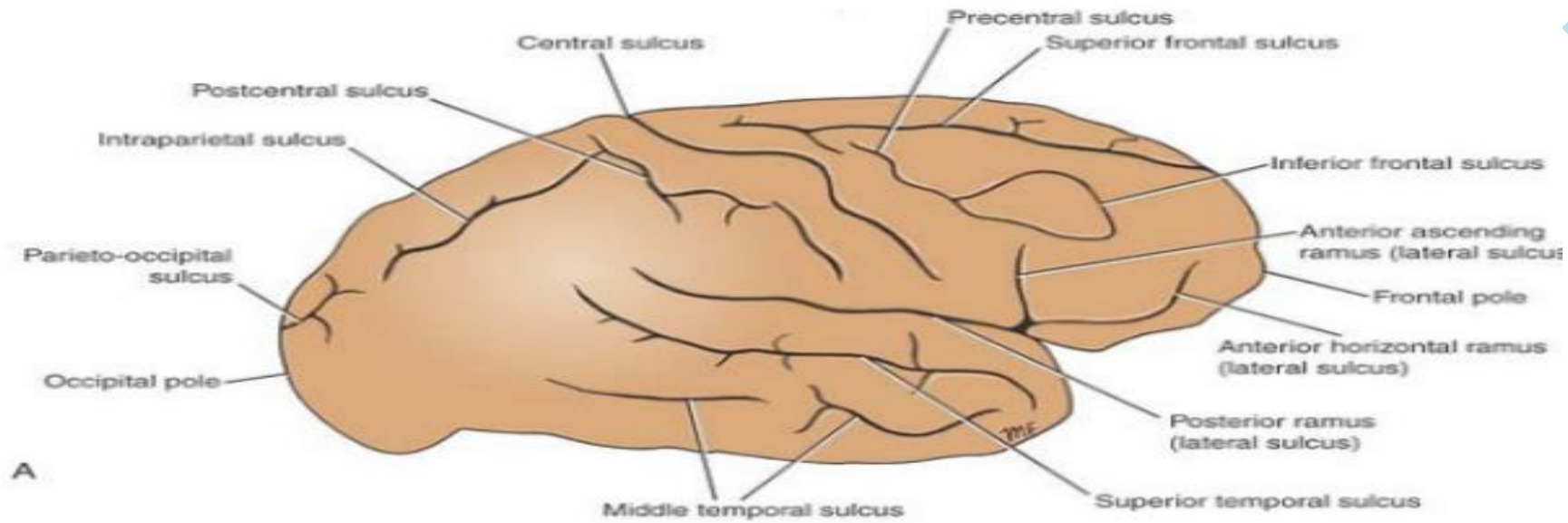
hypothalamus



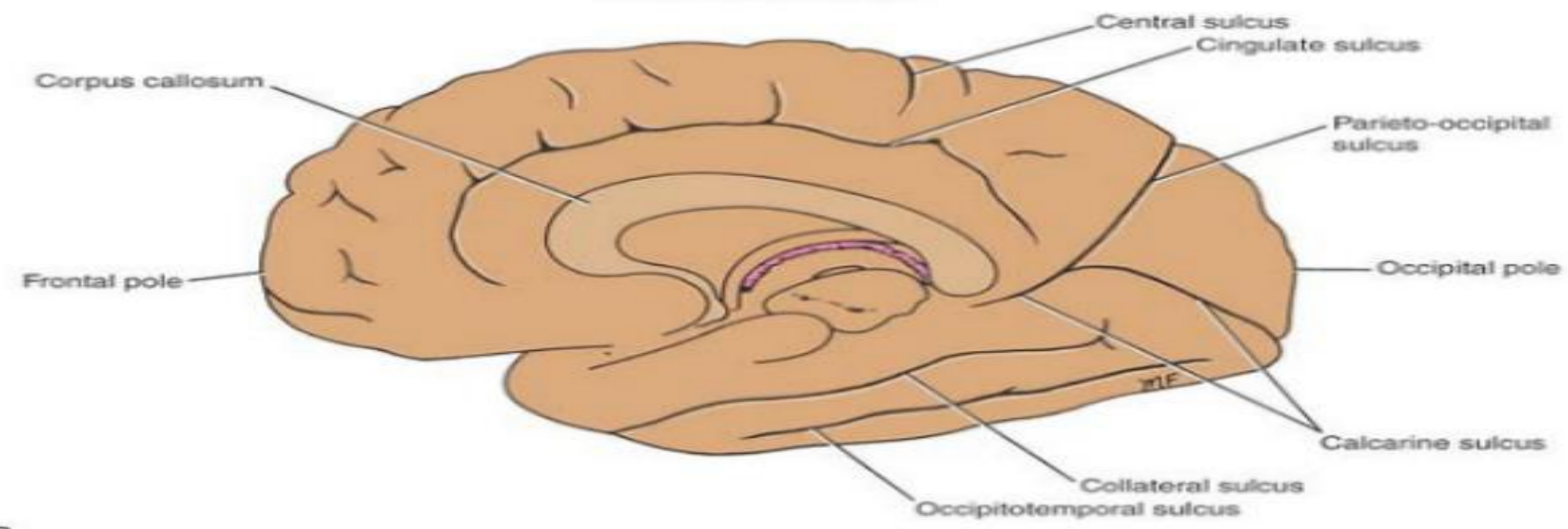


cerebrum

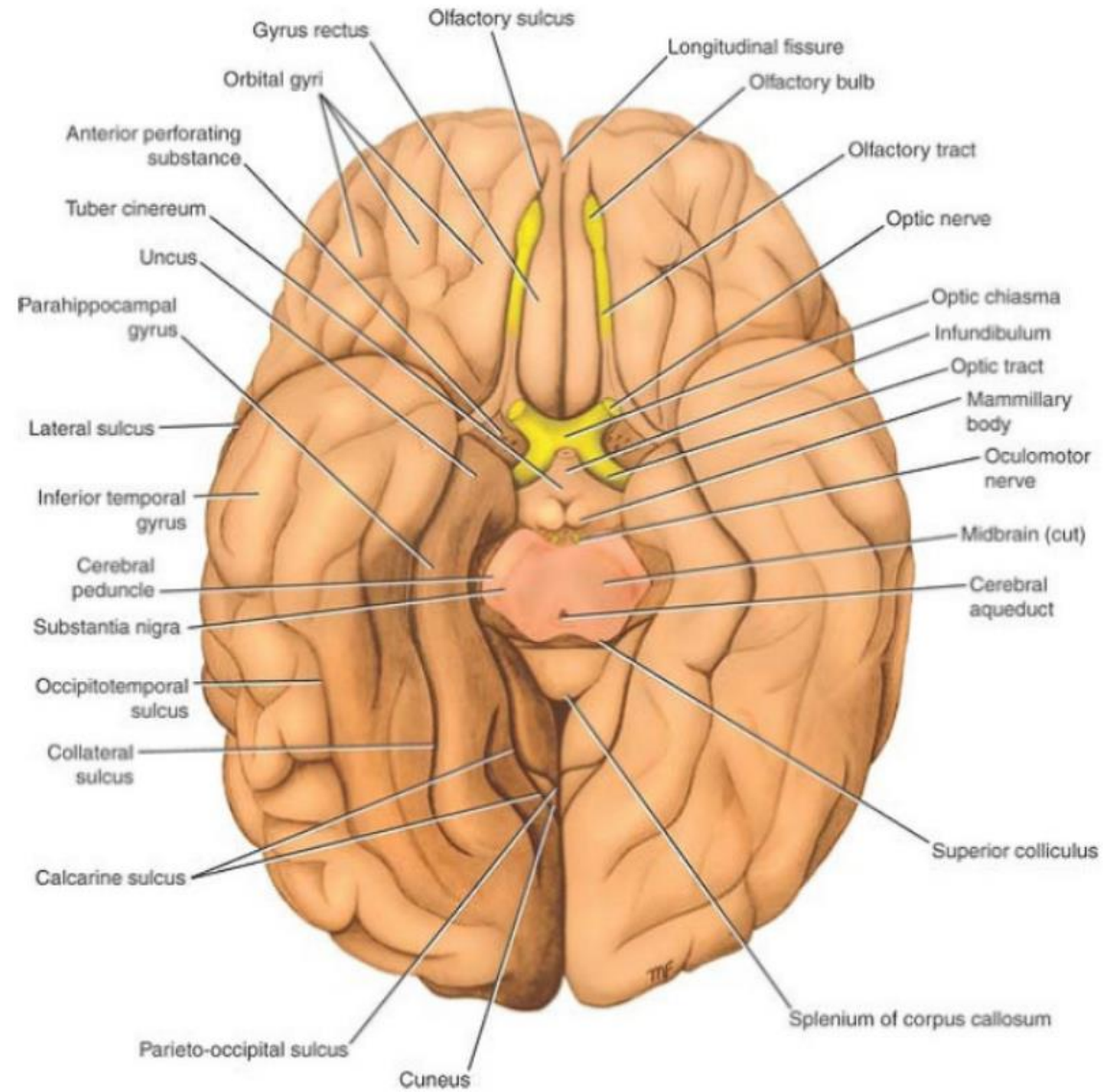


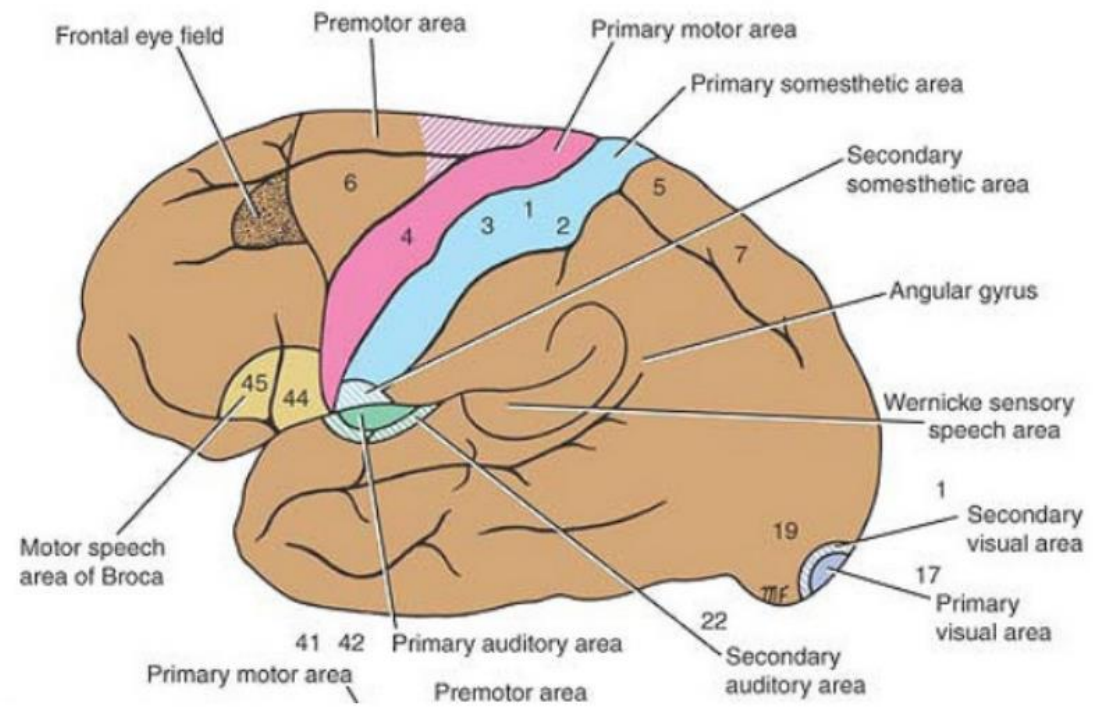
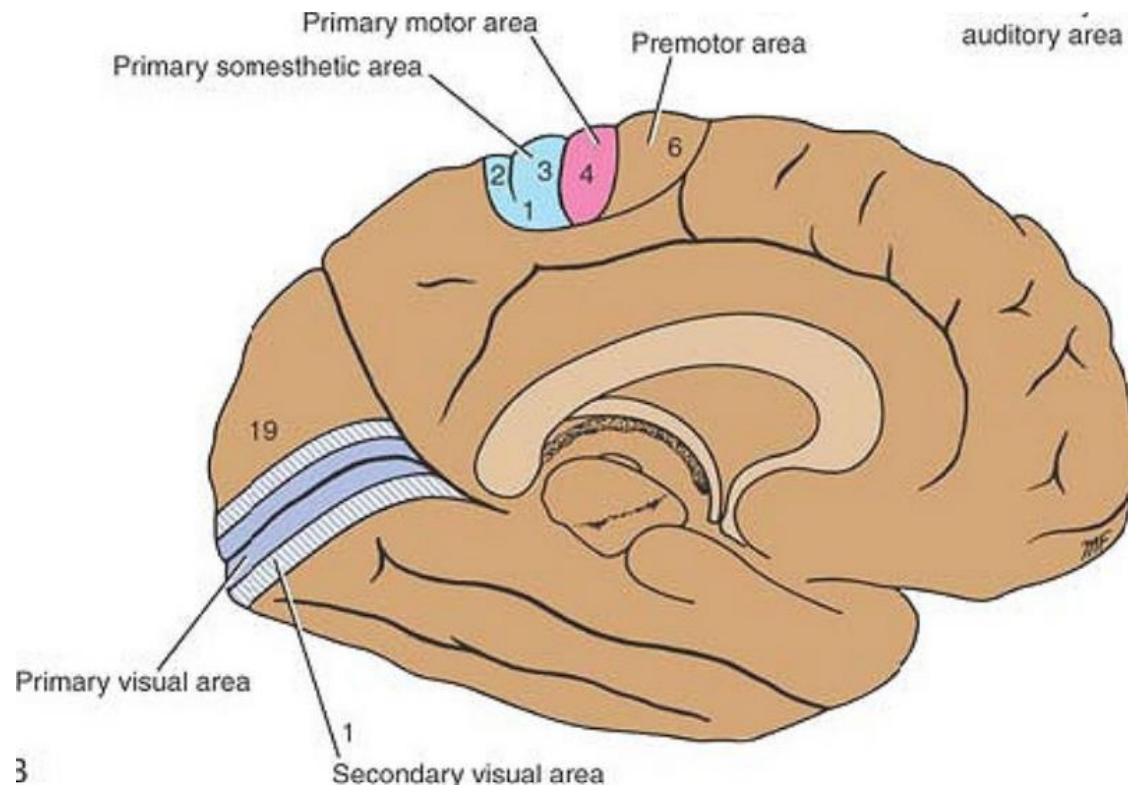


A



B





Central sulcus

PRIMARY SOMATOSENSORY AREA (postcentral gyrus)

SOMATOSENSORY ASSOCIATION AREA

Parietal lobe

COMMON INTEGRATIVE AREA

WERNICKE'S AREA

VISUAL ASSOCIATION AREA

PRIMARY VISUAL AREA

Occipital lobe

Temporal lobe

POSTERIOR

PRIMARY MOTOR AREA (precentral gyrus)

PREMOTOR AREA

PRIMARY GUSTATORY AREA

FRONTAL EYE FIELD AREA

Frontal lobe

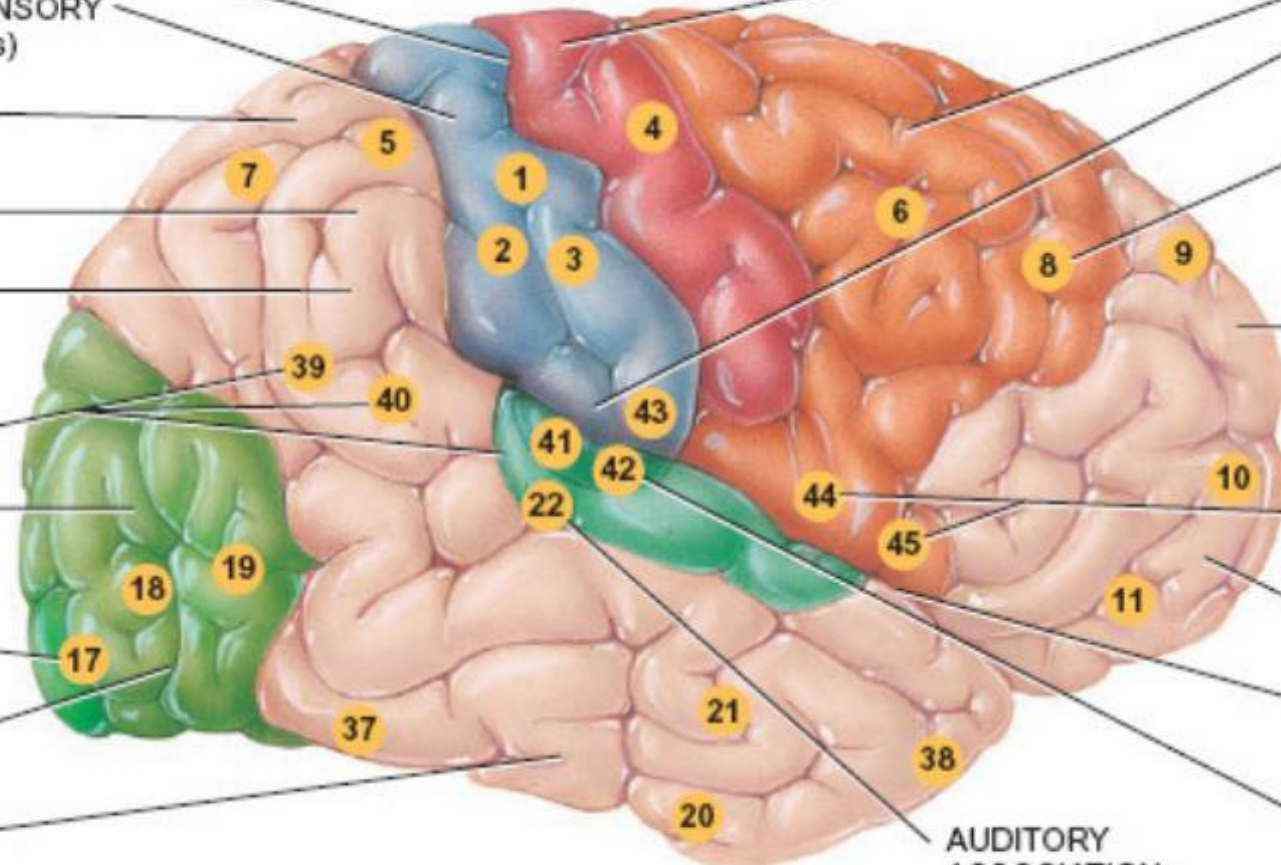
BROCA'S SPEECH AREA

PREFRONTAL CORTEX

Lateral cerebral sulcus

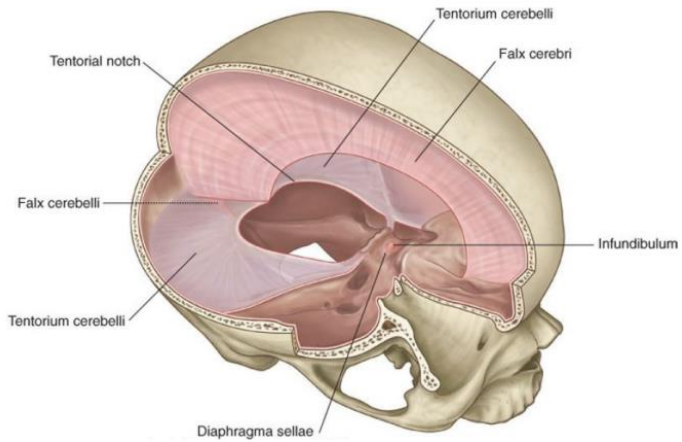
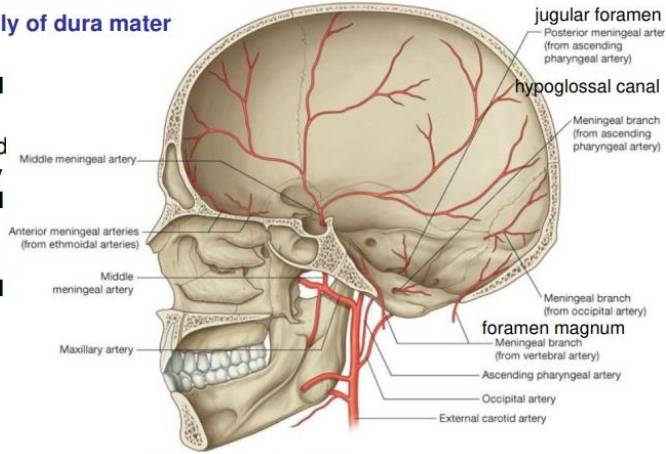
PRIMARY AUDITORY AREA

ANTERIOR

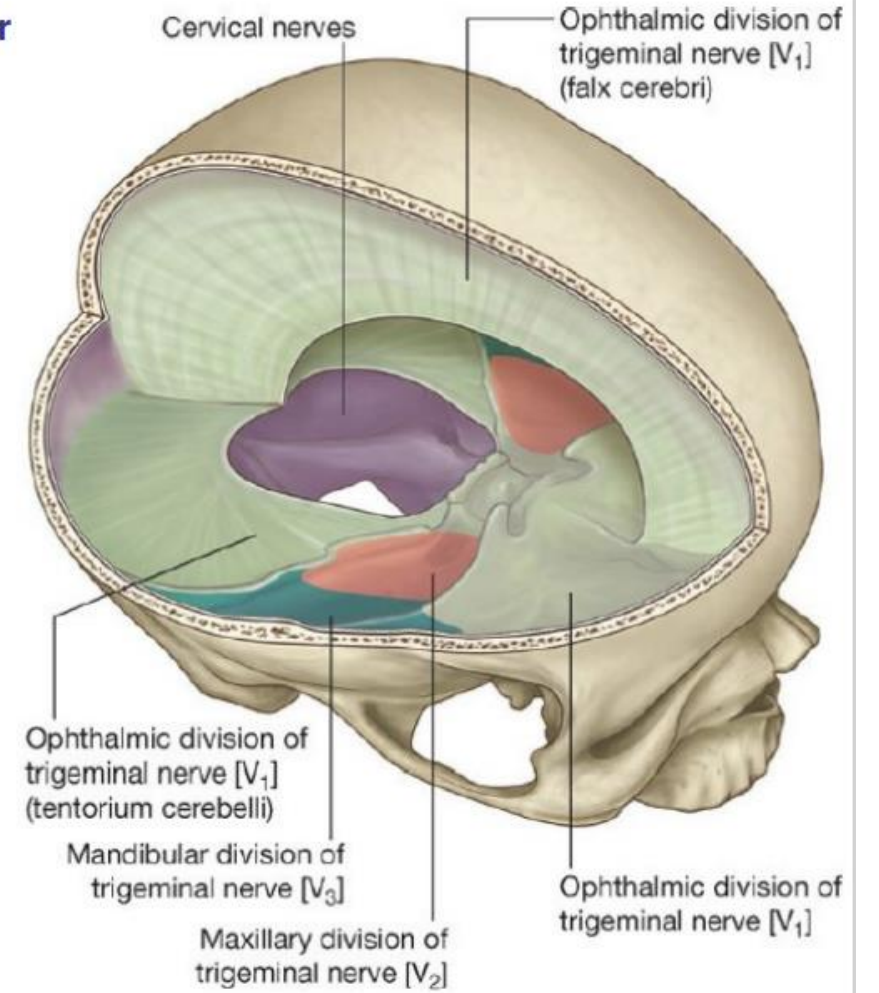


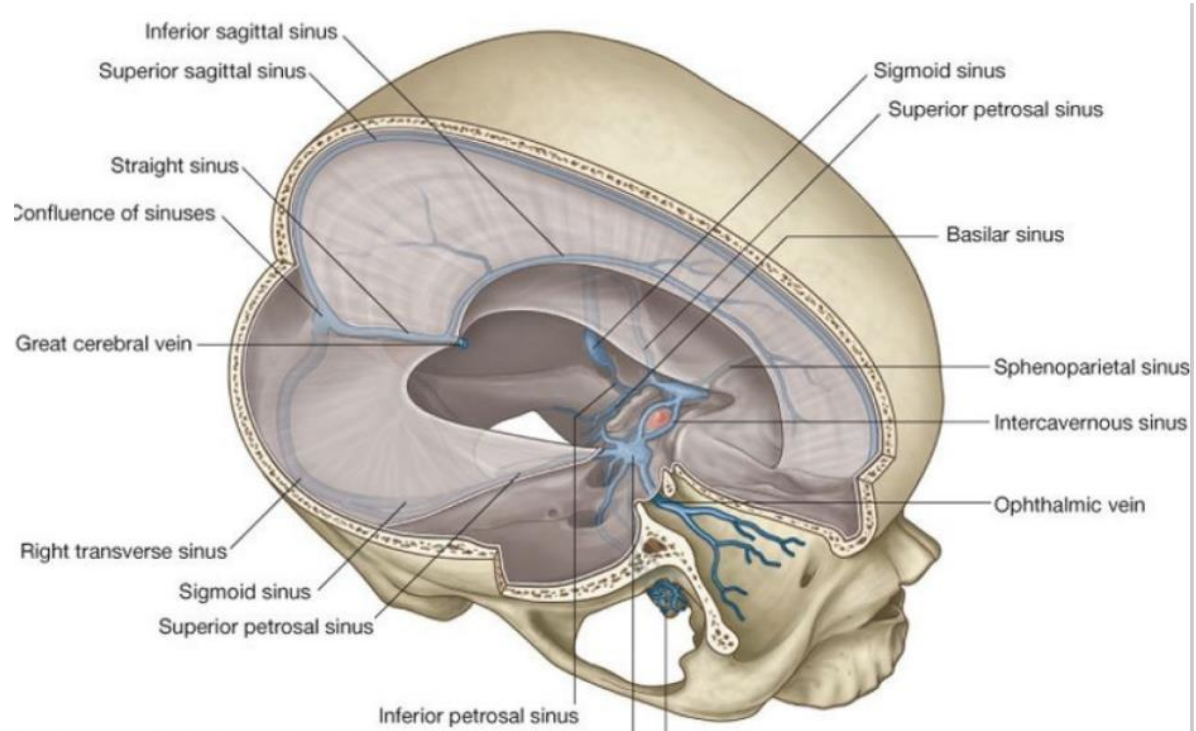
Arterial supply of dura mater

- Anterior meningeal arteries
- Middle and accessory meningeal arteries
- posterior meningeal artery

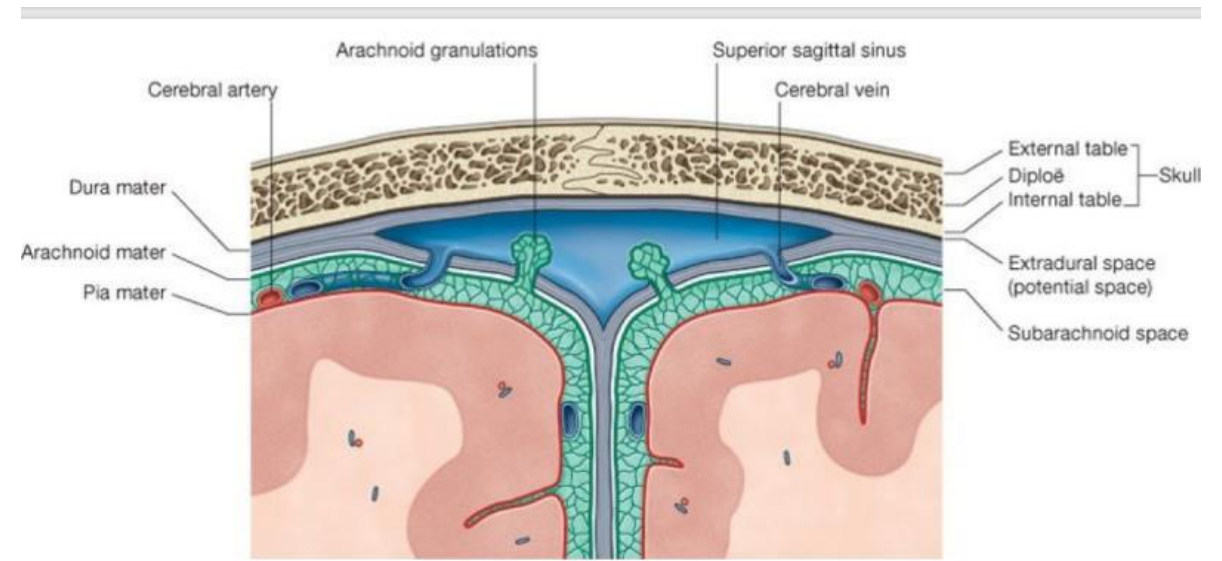


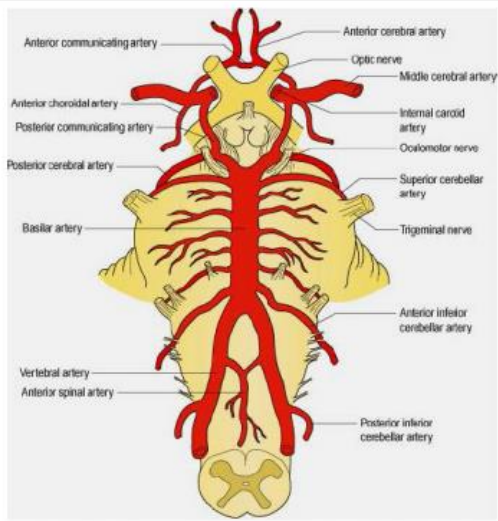
Nerve supply of dura mater



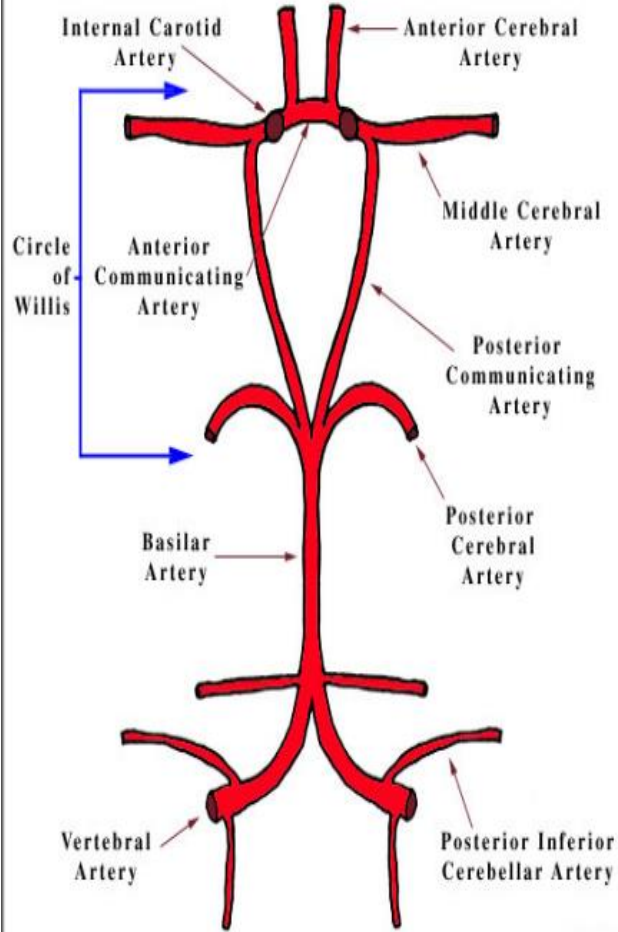


➤ **Superior sagittal sinus** Location: Superior border of falx cerebri

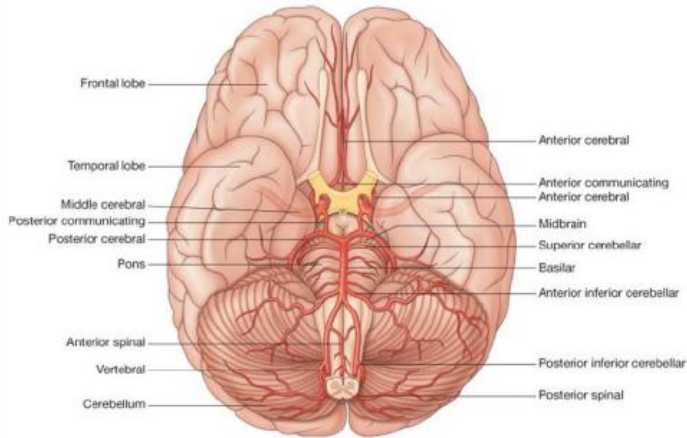
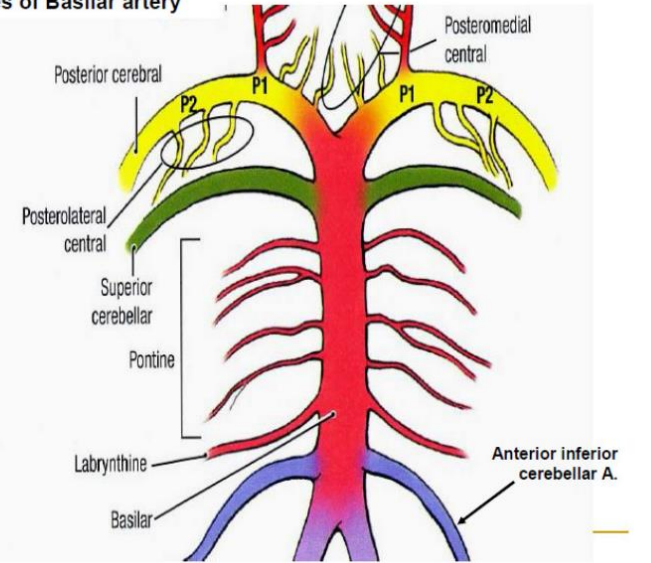




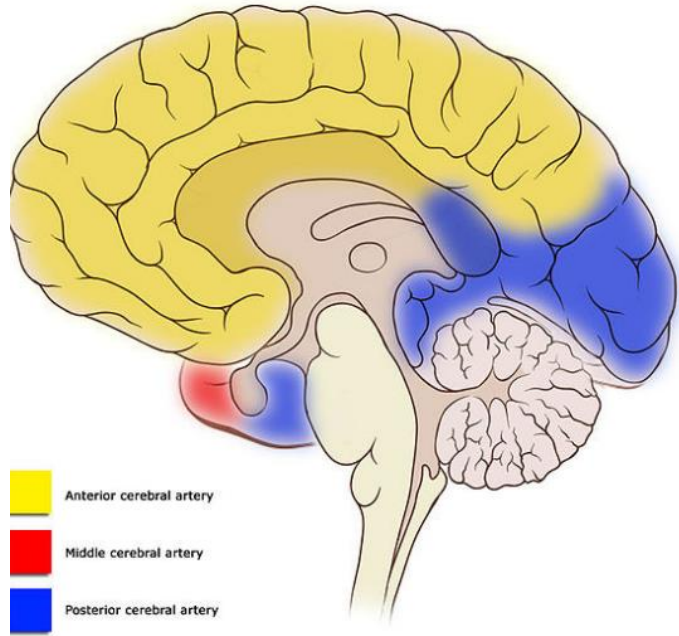
CIRCLE OF WILLIS



Branches of Basilar artery

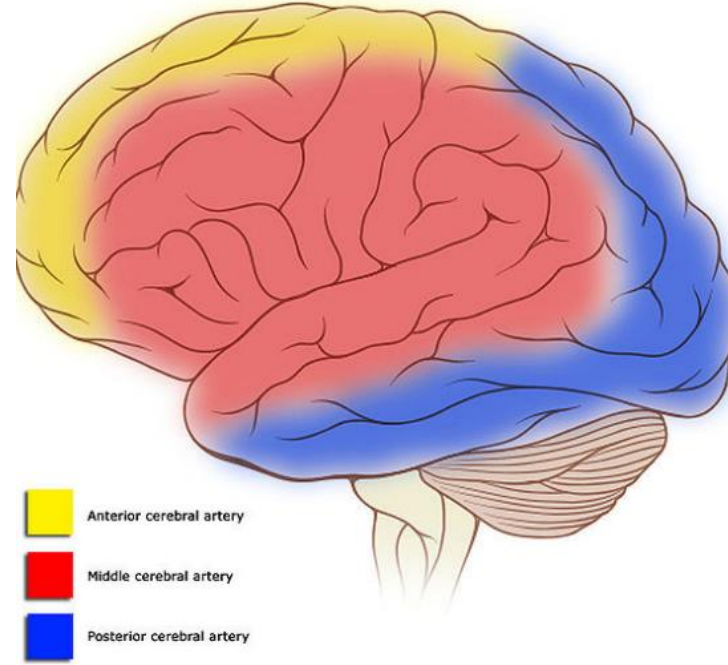


Cortical vascular territories



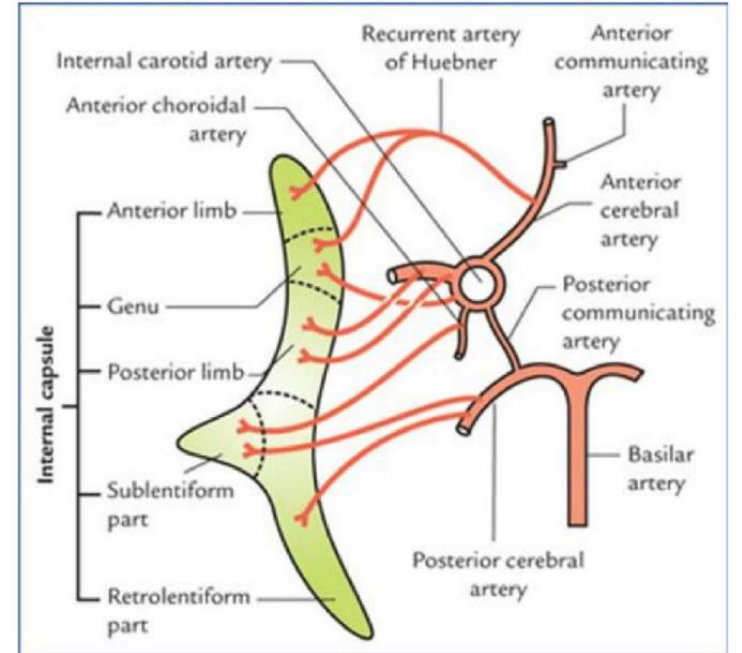
- Anterior cerebral artery
- Middle cerebral artery
- Posterior cerebral artery

Cortical vascular territories



- Anterior cerebral artery
- Middle cerebral artery
- Posterior cerebral artery

Blood supply of the internal capsule



- -ventricular sys and limbic sys images are covered in the doctor`s file.