

Identify the following structures

I-Kidney

- a) Medulla (pyramids)
- b) Cortex
- c) Renal column
- d) Renal papillae
- e) Minor calyces
- f) Major calyces
- g) Renal pelvis
- h) Renal lobe
- i) Renal lobule
- j) Segmental artery
- k) Lobar artery
- l) Inter-lobar artery
- m) arcuate artery
- n) interlobular artery
- o) Renal artery
- p) Renal Vein
- q) Relation of the kidneys
- r) Peritoneal covering of the kidneys

II -Ureter

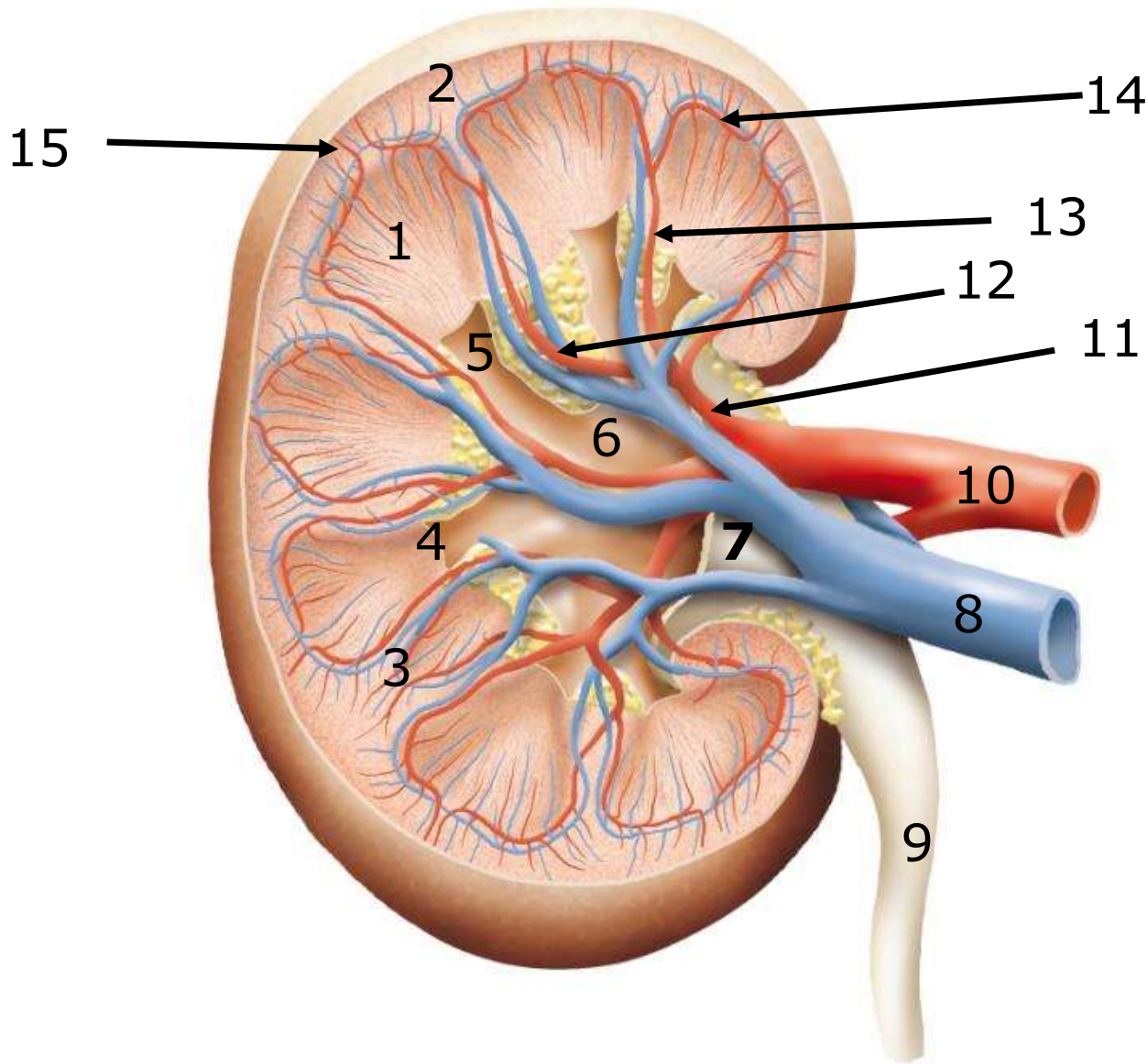
- a) Ureter with its relations
- b) Site of normal constrictions of the ureters

III-Urinary Bladder

- a) Surfaces and relations of the urinary bladder
- b) Interior of urinary bladder
- c) Ligaments of urinary bladder

IV- Urethra

- a) Parts of male urethra and its features



- 1) pyramid
- 2) cortex
- 3) column
- 4) renal papille
- 5) minor calyces
- 6) major calyces
- 7) renal pelvis
- 8) renal vein
- 9) ureter
- 10) renal artery
- 11) segmental artery
- 12) lobar artery

Label the Diagram

- 13) inter lobar artery
- 14) arcuate artery
- 15) interlobular artery

Rt

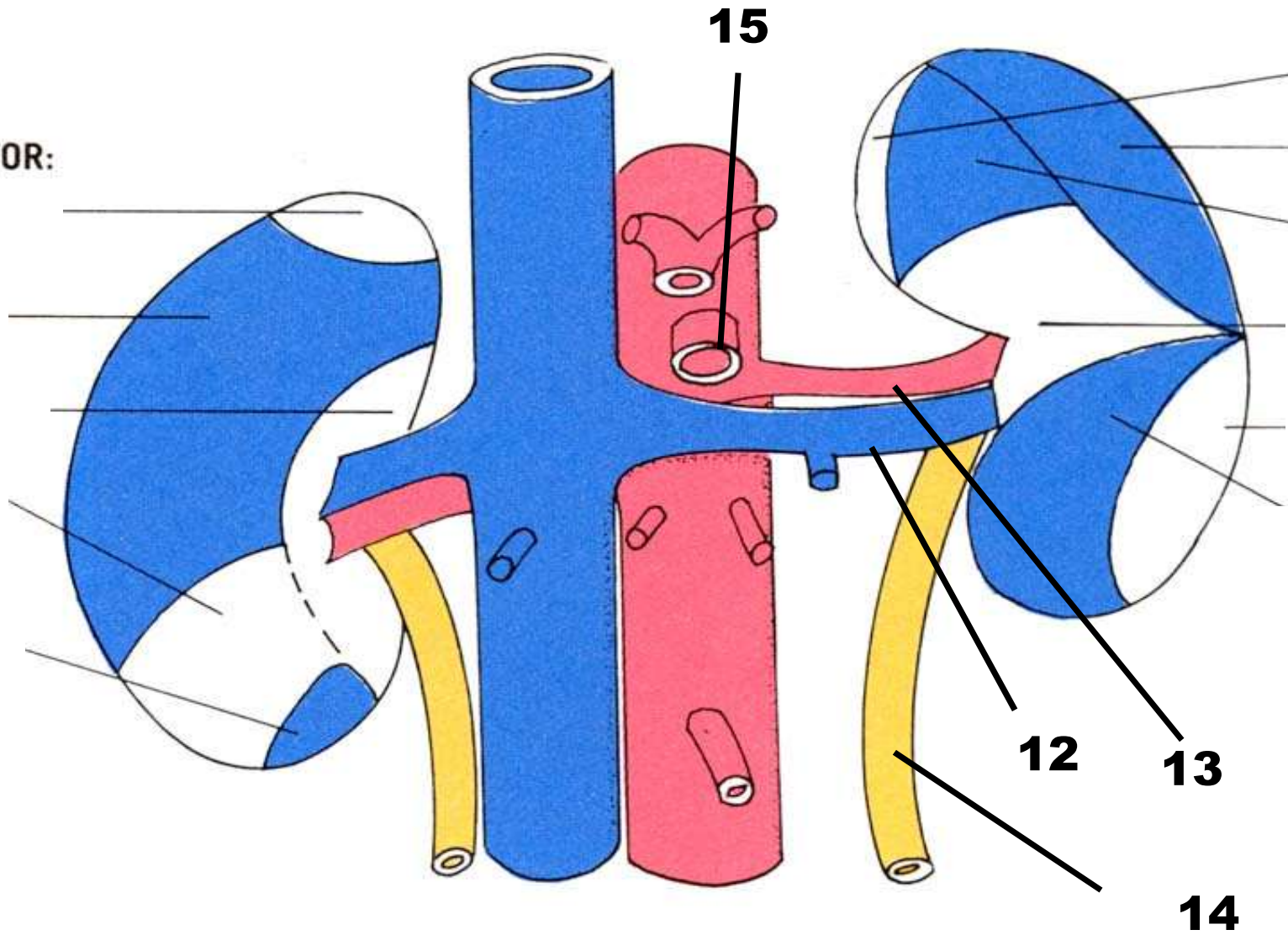
Lt

AREAS FOR:

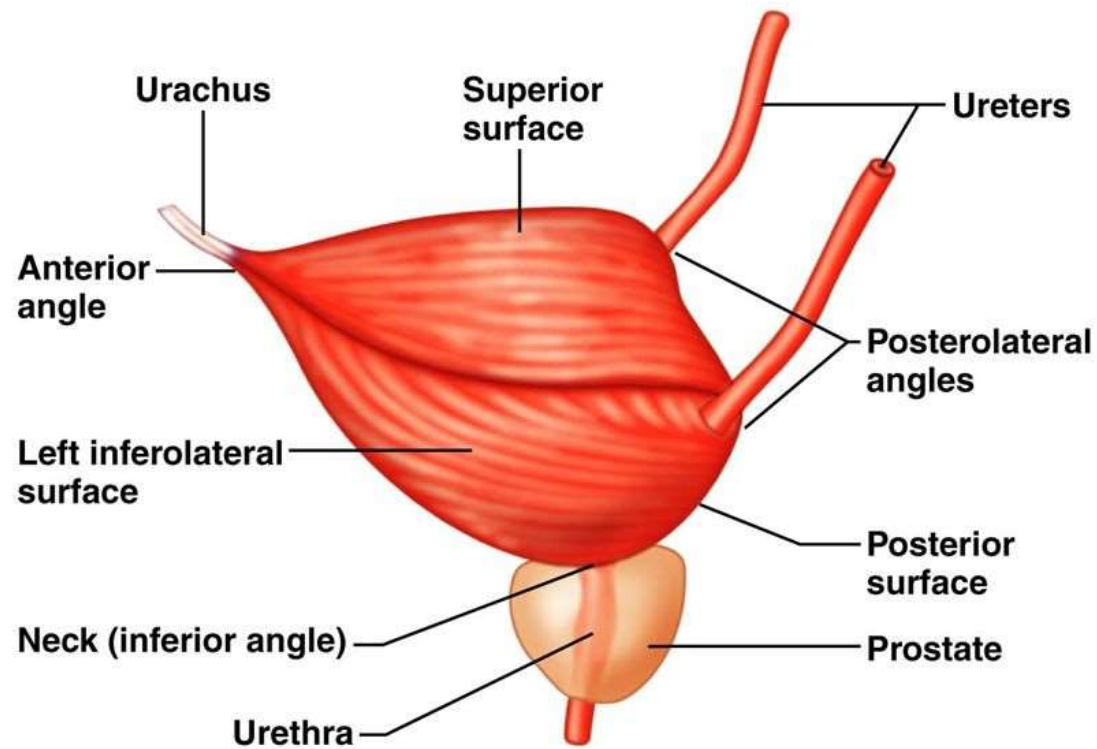
- 1
- 2
- 3
- 4
- 5

AREAS FOR:

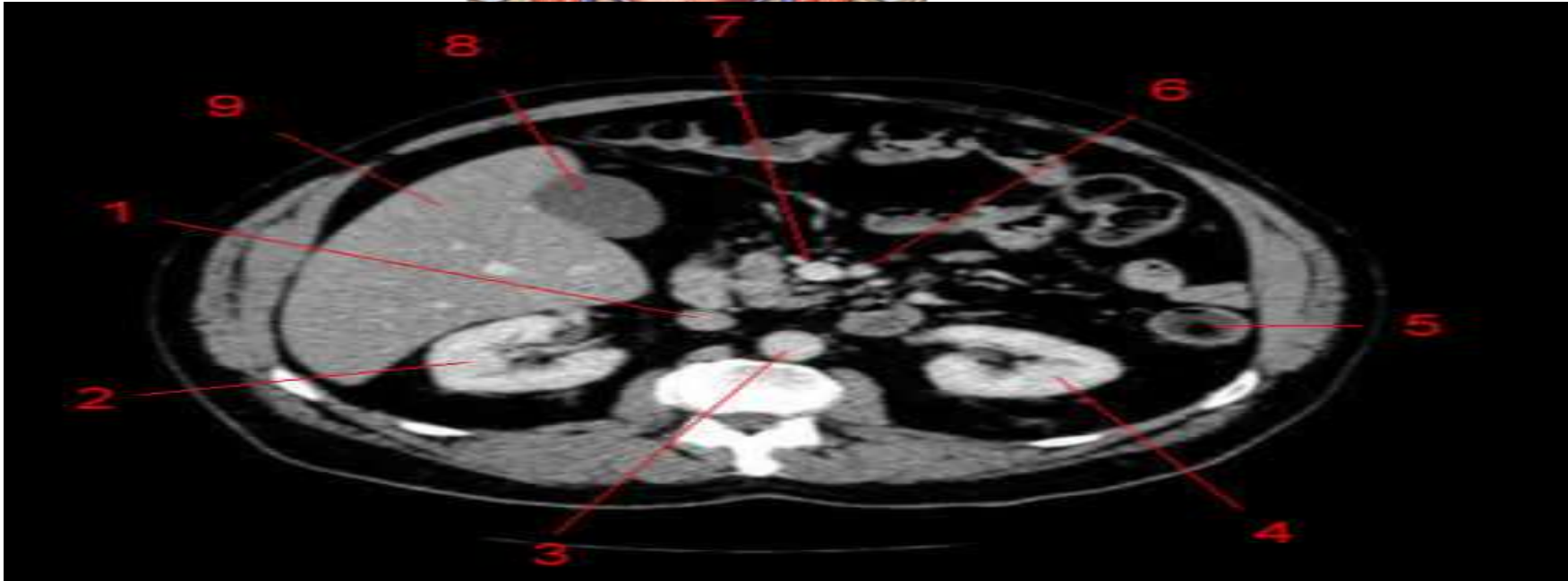
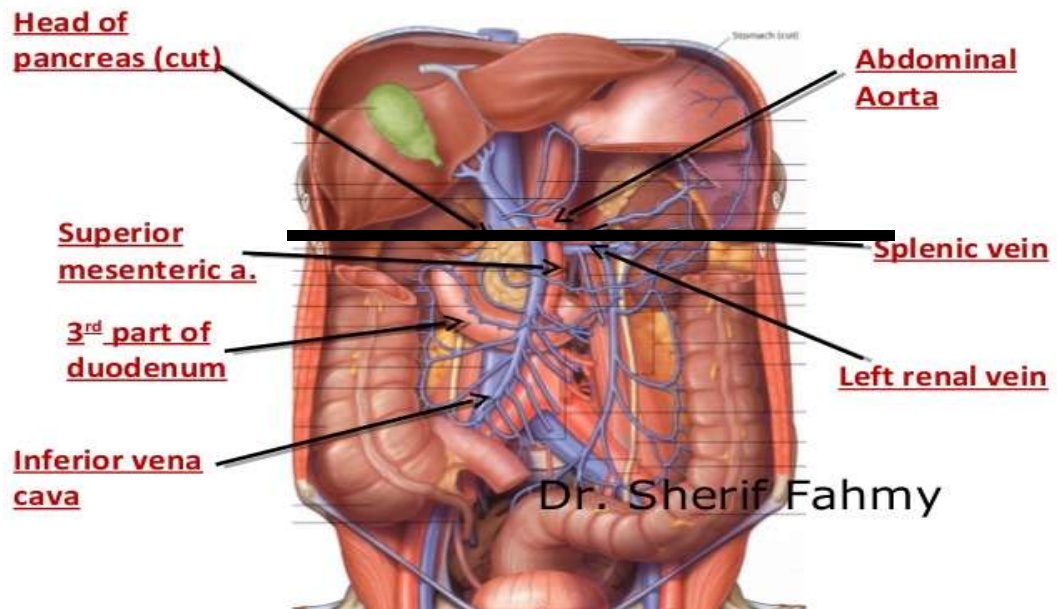
- 6
- 7
- 8
- 9
- 10
- 11



- 1) impression of suprarenal gland
- 2) impression of the liver (hepatic impression)
- 3) impression of second part of duodenum
- 4) " of right colic flexure
- 5) " of coil of small intestine
- 6) " of left suprarenal gland
- 7) " of spleen
- 8) gastric impression of stomach
- 9) pancreatic impression
- 10) descending colon impression
- 11) impression of coil of small intestine
- 12) Left renal vein
- 13) Left renal artery
- 14) ureter
- 15) superior mesenteric artery

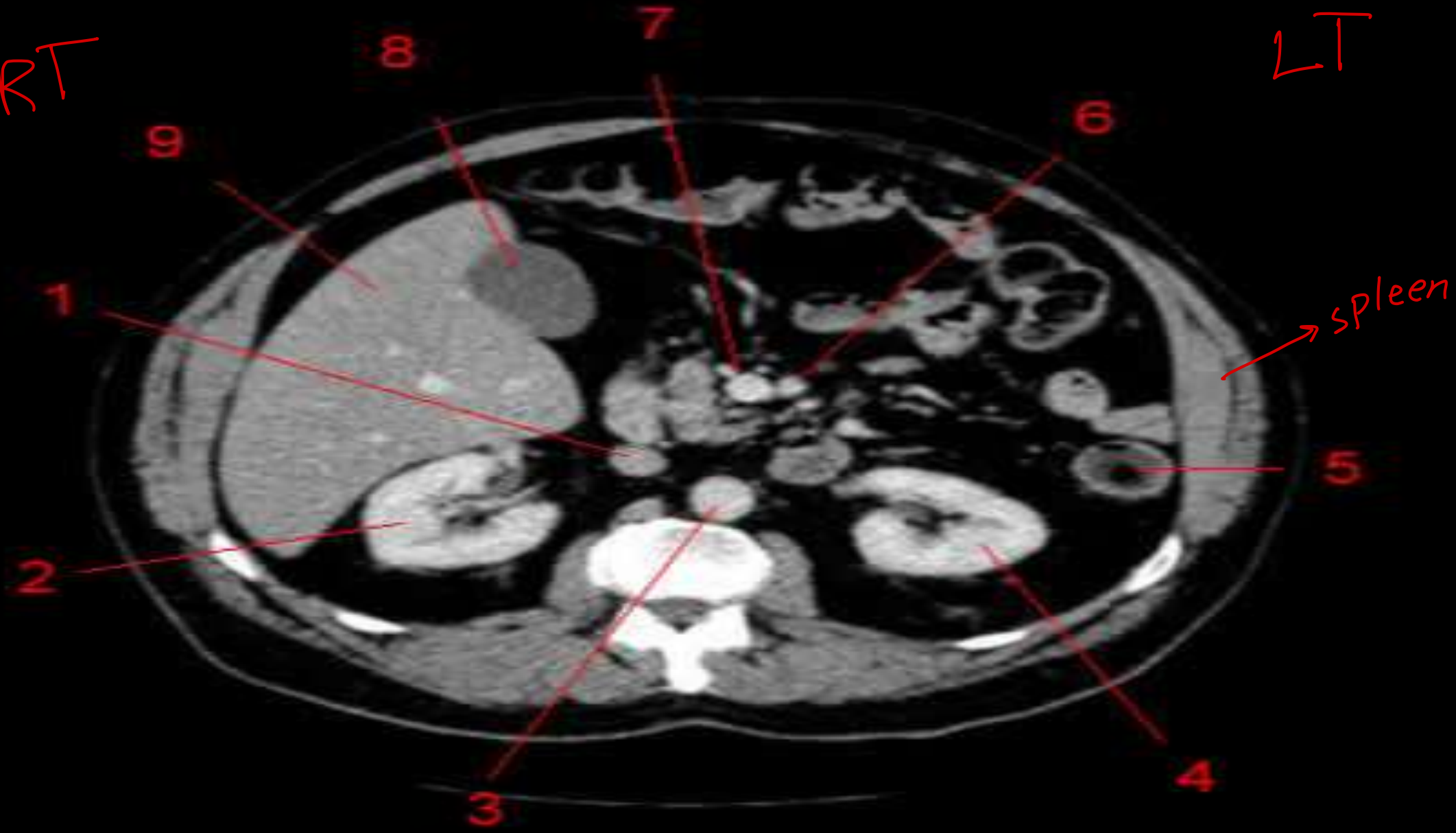


Mention the relation of urinary bladder In Male and Female



RT

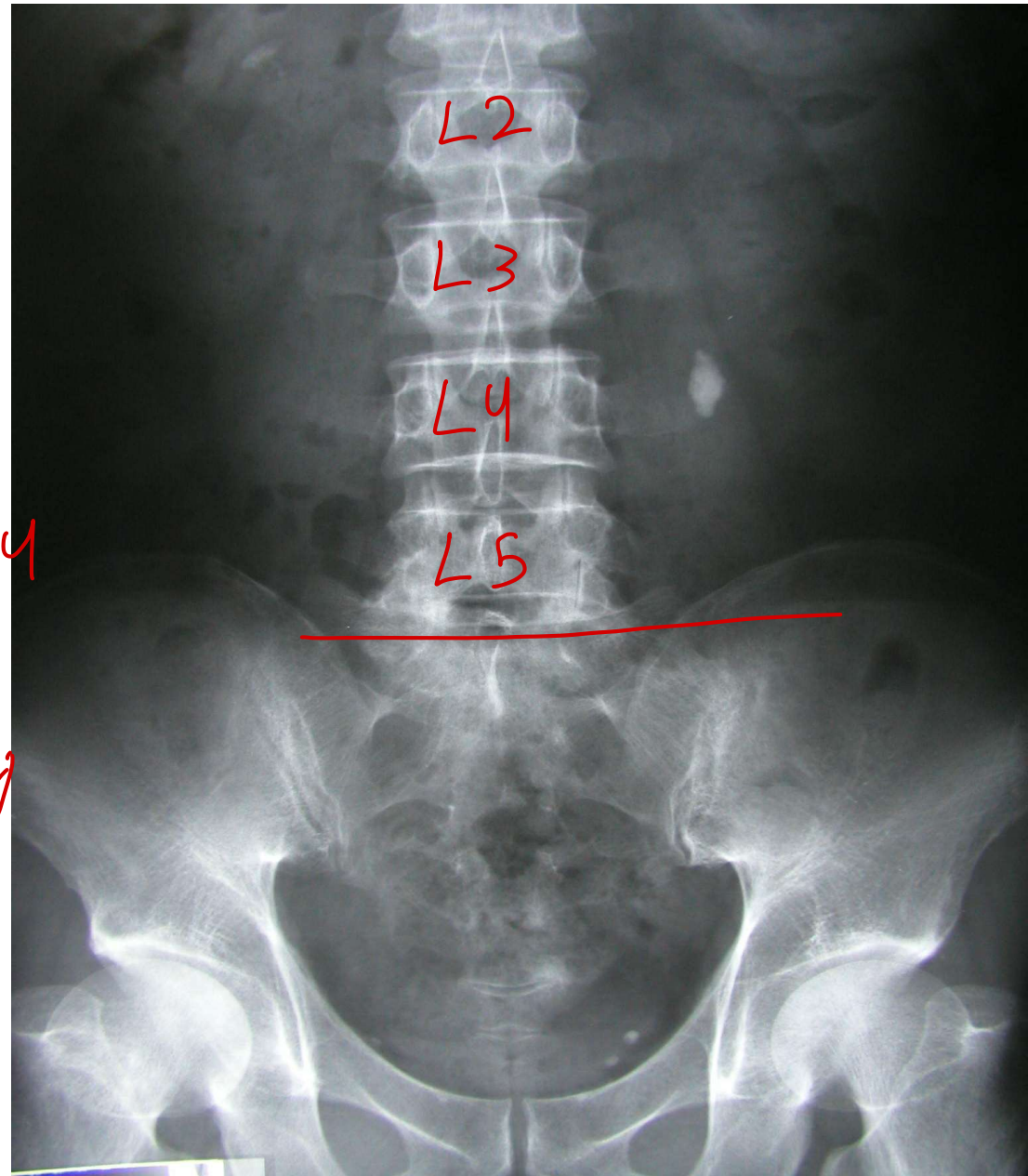
LT



- 1) inferior vena cava
- 2) right kidney
- 3) Abdominal Aorta
- 4) left kidney
- 5) left colon
- 6) superior mesenteric artery
- 7) superior mesenteric vein
- 8) gall bladder
- 9) Liver

→ Plain Xray (KUB ⇒ kidney ureter bladder)

1. What is the type of this radiograph ?
2. Where is the location of the stone ? L4
3. Mark sites of ureteric constriction
 - 1) L2 (pelviouteric junction)
 - 2) sacroiliac joint (entering pelvic brim)
 - 3) ischial spine (entering of urinary bladder)





Which is abnormal urethrogram and why ?

b

rupture urethra