

Identify the following structures

I-Kidney

- a) Medulla (pyramids)
- b) Cortex
- c) Renal column
- d) Renal papillae
- e) Minor calyces
- f) Major calyces
- g) Renal pelvis
- h) Renal lobe
- i) Renal lobule
- j) Segmental artery
- k) Lobar artery
- l) Inter-lobar artery
- m) arcuate artery
- n) interlobular artery
- o) Renal artery
- p) Renal Vein
- q) Relation of the kidneys
- r) Peritoneal covering of the kidneys

II -Ureter

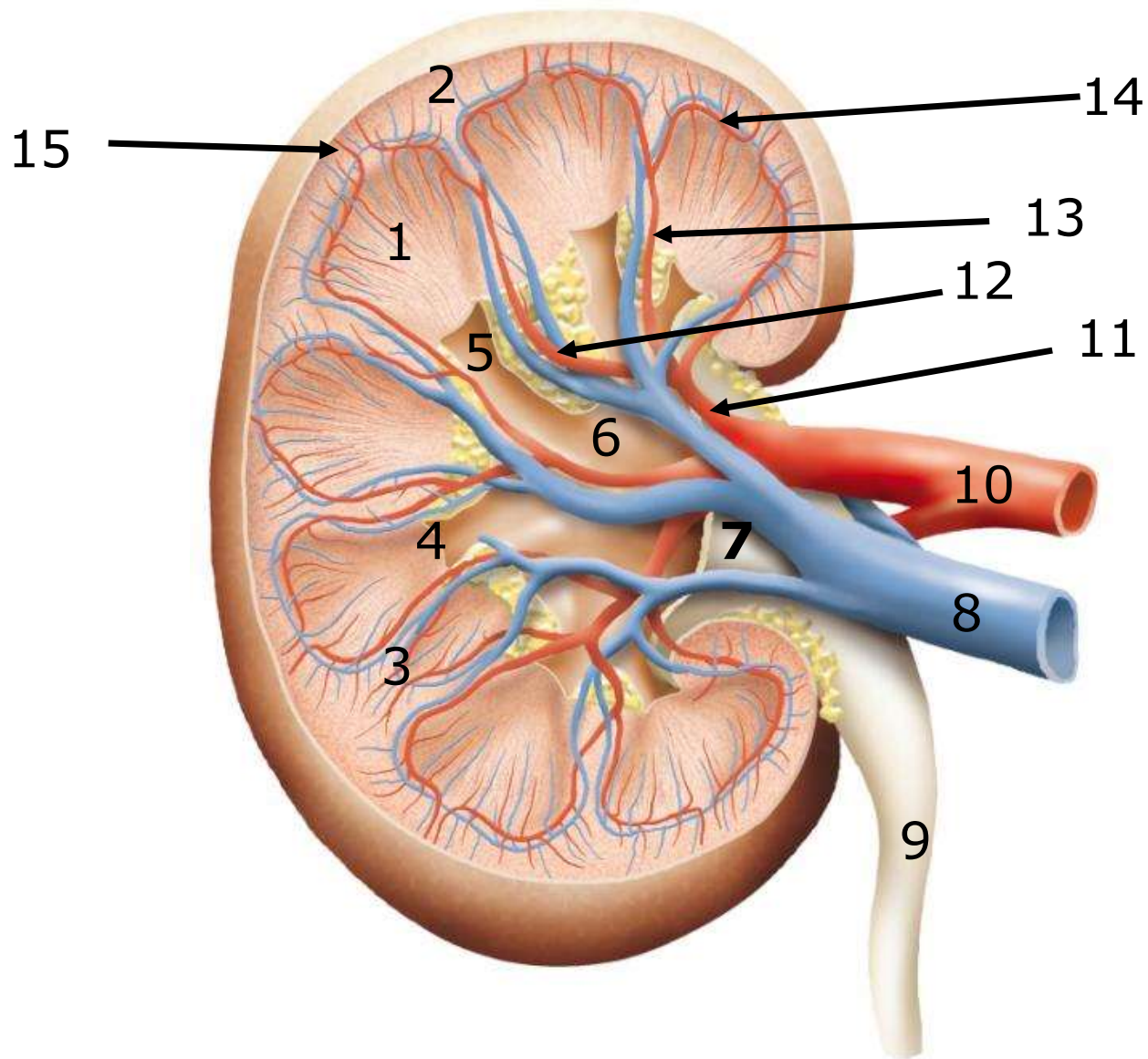
- a) Ureter with its relations
- b) Site of normal constrictions of the ureters

III-Urinary Bladder

- a) Surfaces and relations of the urinary bladder
- b) Interior of urinary bladder
- c) Ligaments of urinary bladder

IV- Urethra

- a) Parts of male urethra and its features



Label the Diagram

AREAS FOR:

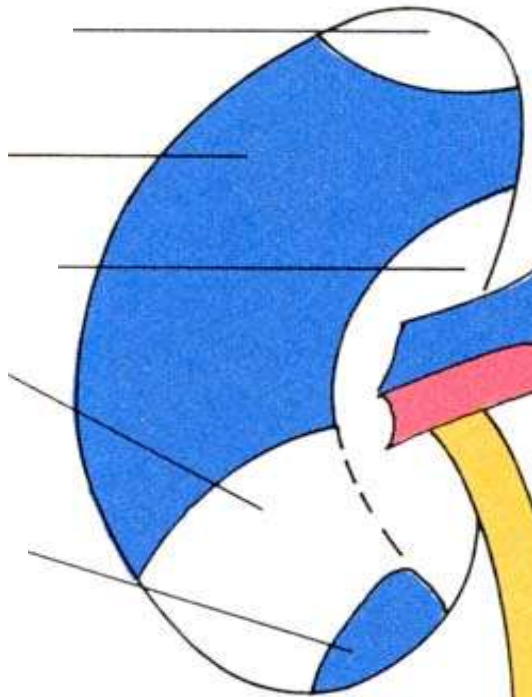
1

2

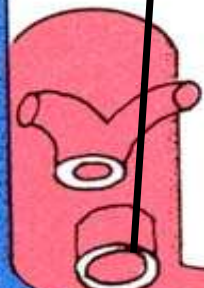
3

4

5



15



AREAS FOR:

6

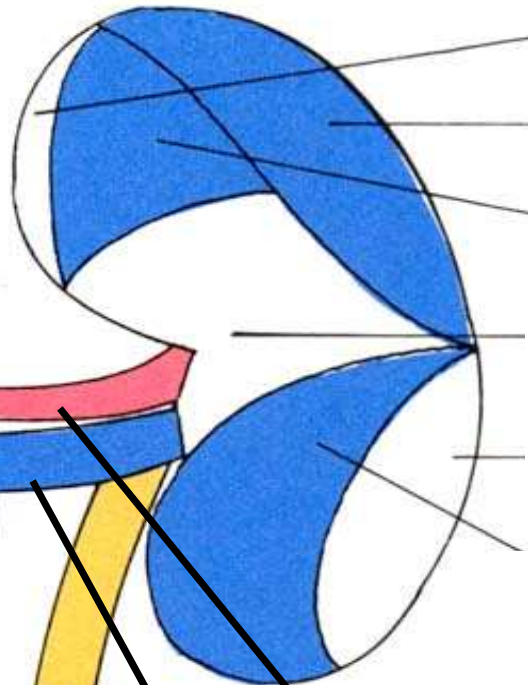
7

8

9

10

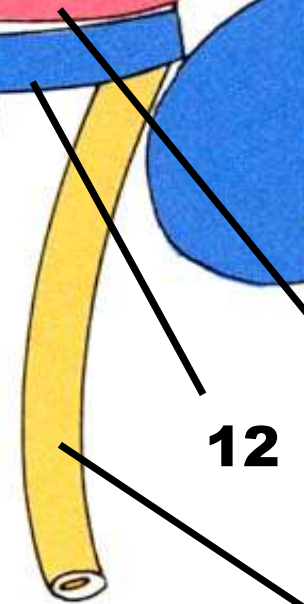
11

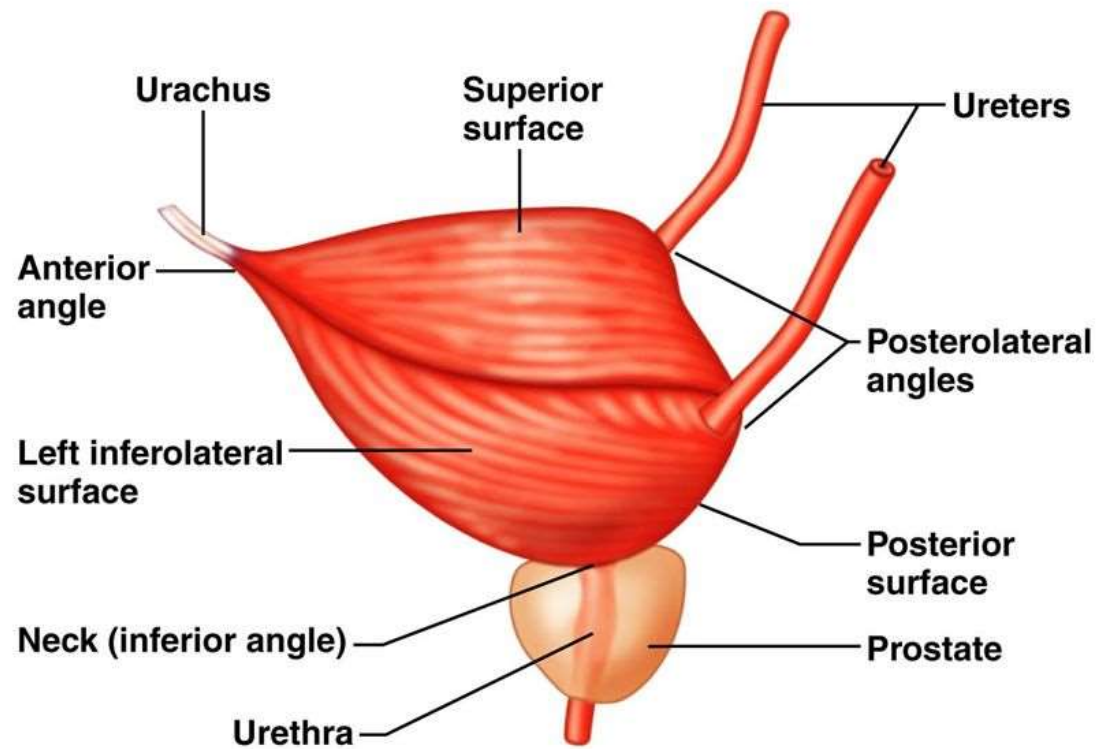


12

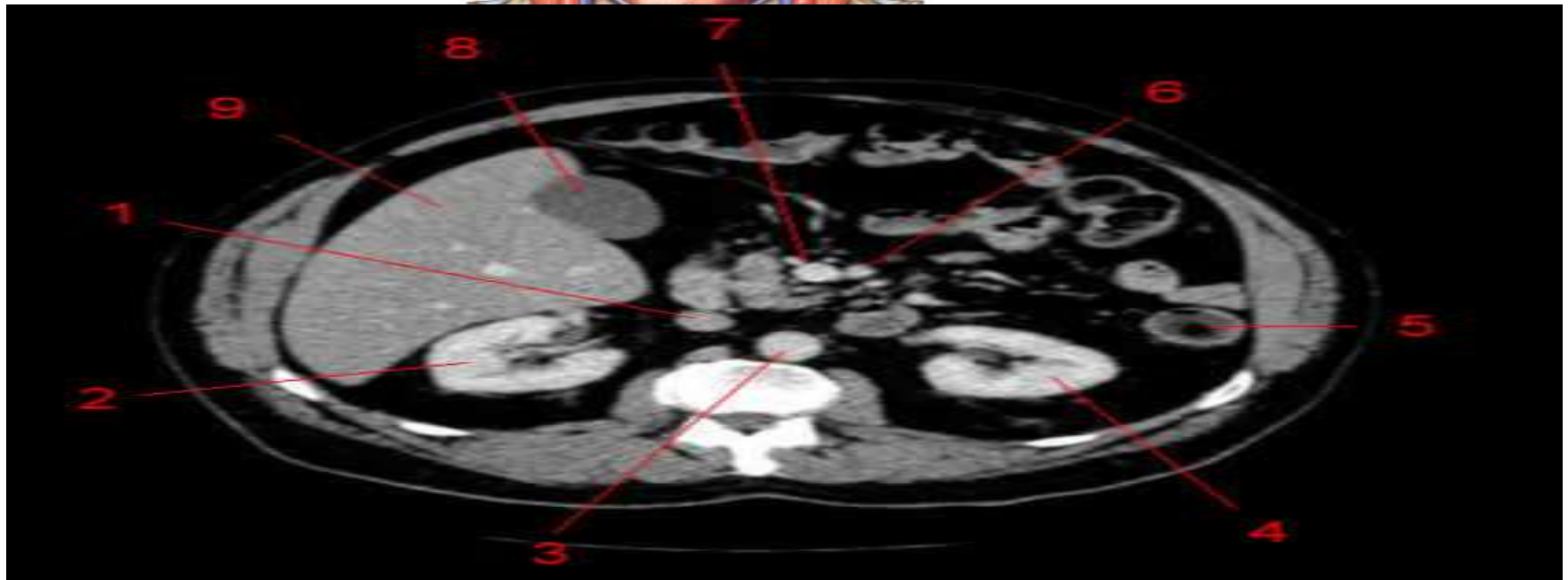
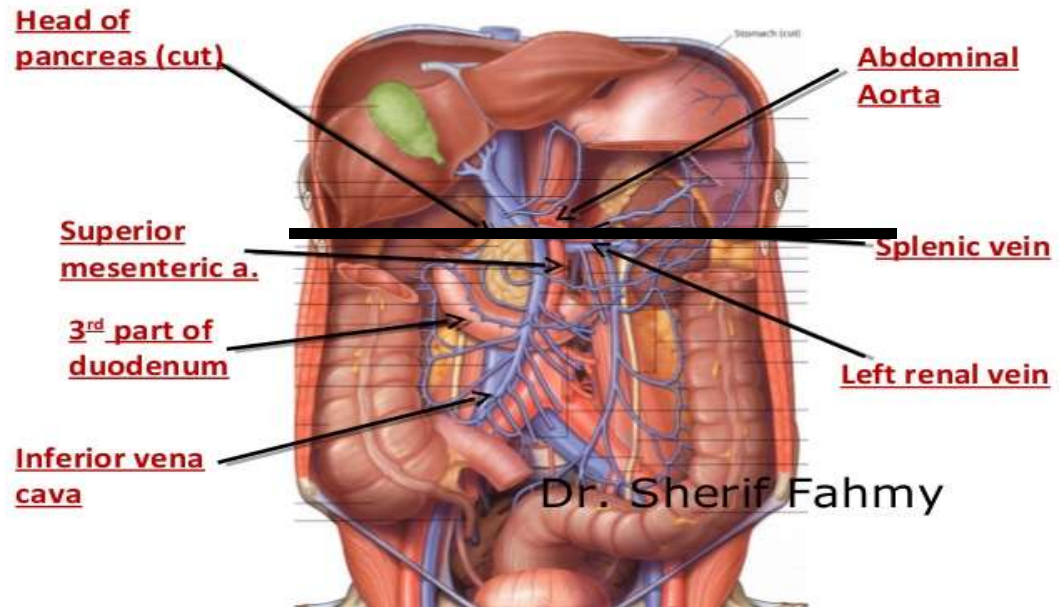
13

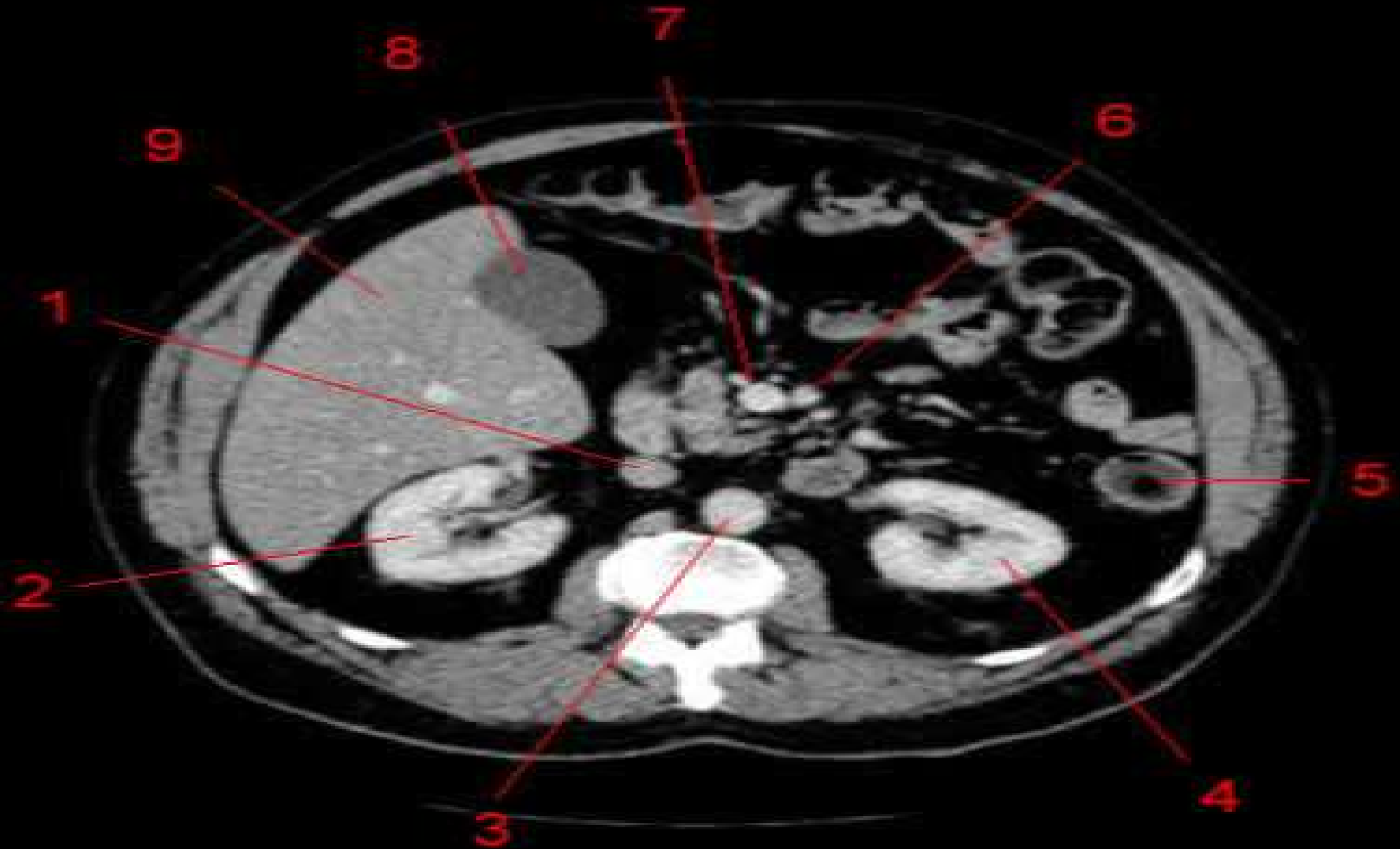
14





Mention the relation of urinary bladder In Male and Female





1. What is the type of this radiograph ?
2. Where is the location of the stone ?
3. Mark sites of ureteric constriction





Which is abnormal urethrogram and why ?