

Mesenteric Ischemia

Dr. Khaled Daradka

Hepatobiliary and Pancreatic Surgeon
Assistant Professor/ Faculty of Medicine
University of Jordan

Edited by
Ghada Alzoubi

Introduction

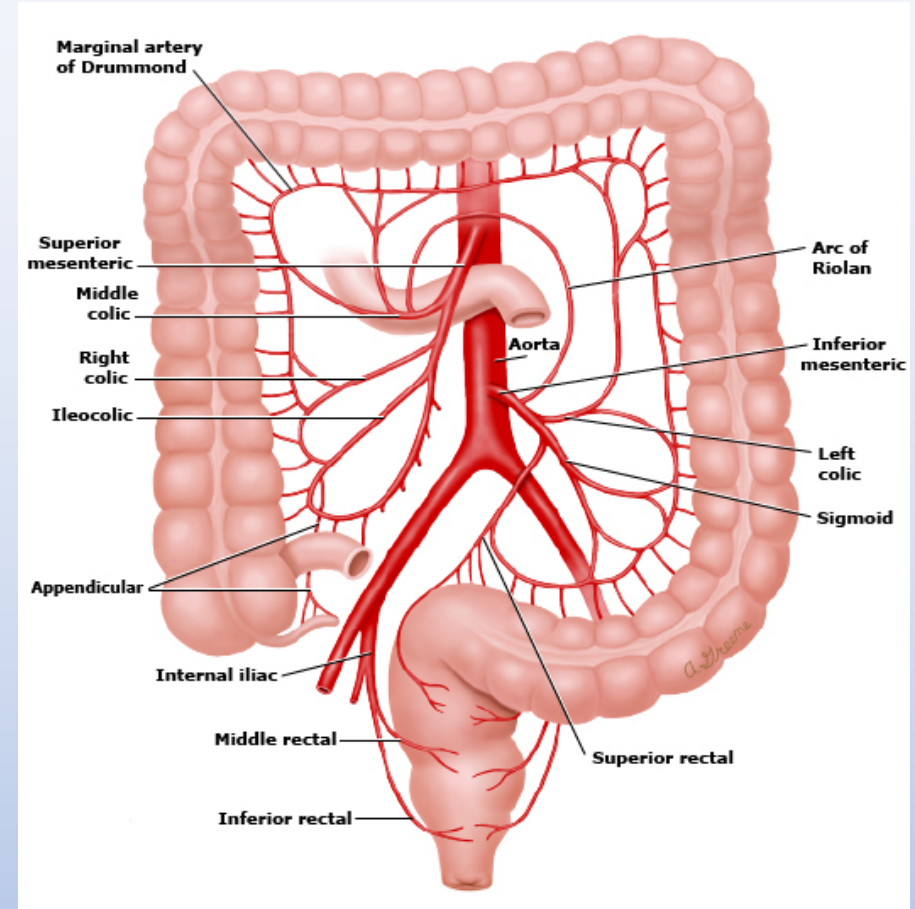
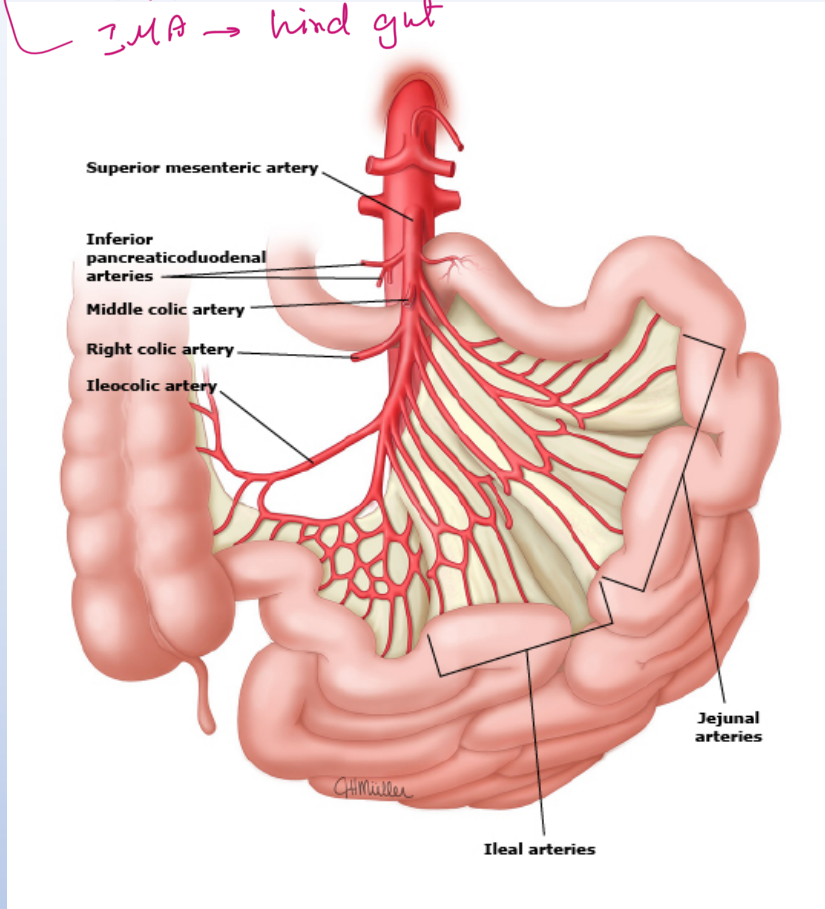
- Ischemia affecting the small intestine is generally referred to as mesenteric ischemia, while ischemia affecting the large intestine is referred to as colonic ischemia.
- A broader term, splanchnic (visceral) ischemia, encompasses ischemia affecting the intestine, as well as other abdominal organs such as the liver, spleen, or kidneys.
- It can be caused by any process that reduces intestinal blood flow, such as **arterial occlusion**, **venous occlusion**, or **arterial vasospasm**.

*there is a venous vaso spasm?
no, no muscle in vein like Artery*

Intestinal Vascular Anatomy (Arterial Blood Supply)

Branch
of
Aabd.
Artery

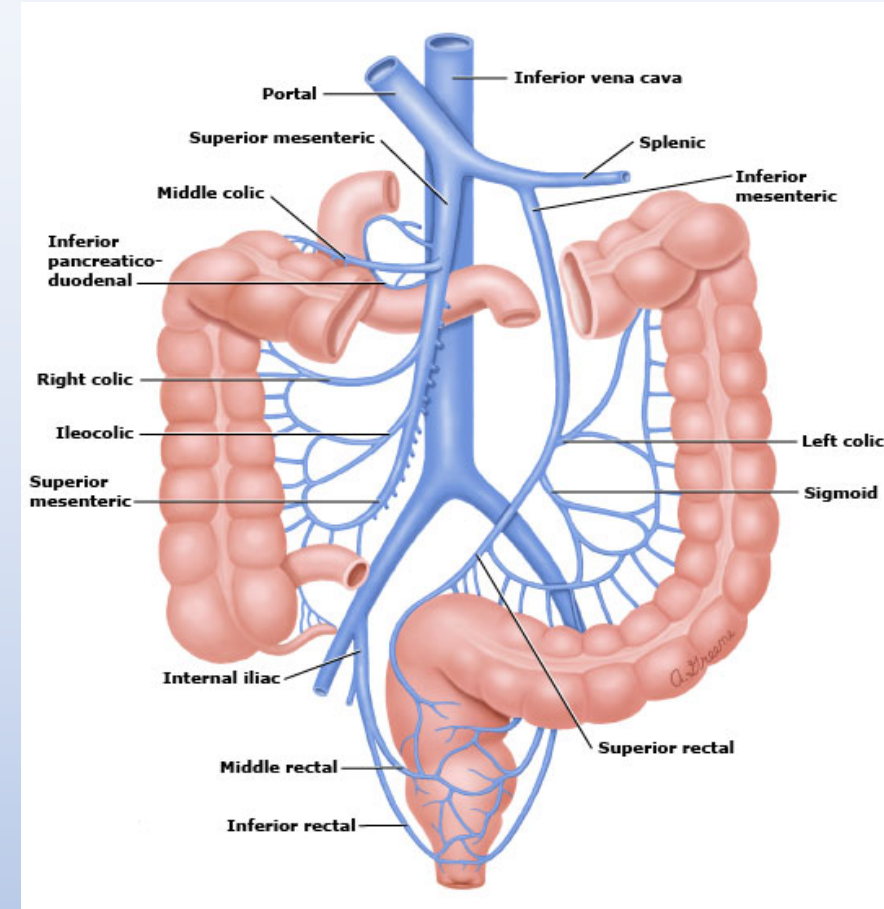
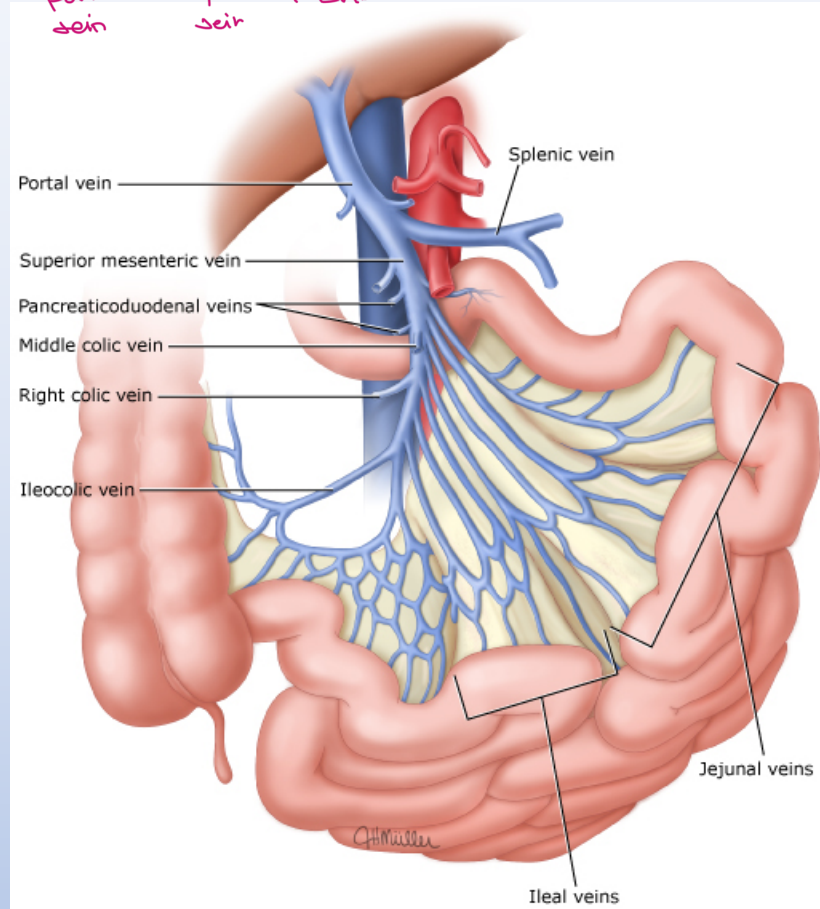
Celiac → foregut
SMA → mid gut
IMA → hind gut



Venous Drainage of The Intestine

Any single Abd organ drain into portal v.

portal vein → Splenic vein + SMV
↓ vein ↓ vein



Collateral circulation

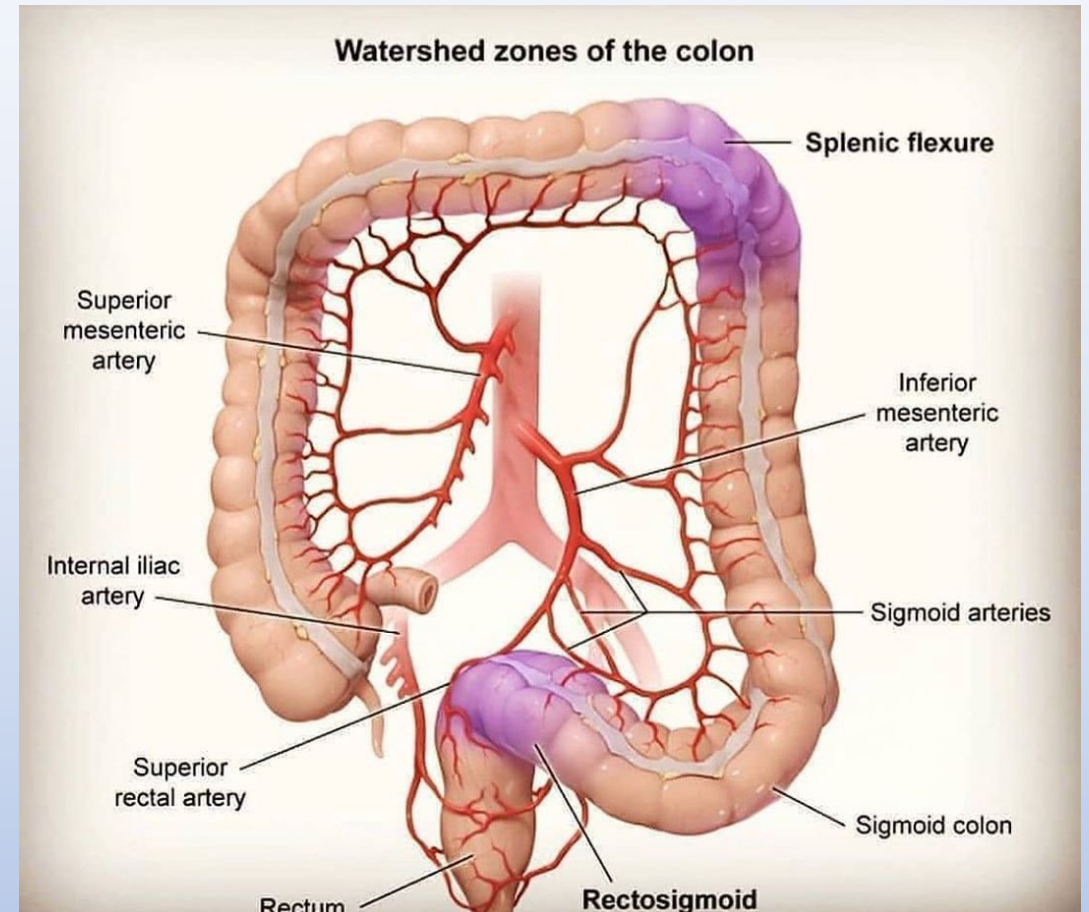
Protects the intestines from transient periods of inadequate perfusion.

The major collateral pathways include:

- The celiac axis and the SMA
Superior and inferior pancreaticoduodenal
- The SMA and IMA
Marginal artery of Drummond and the meandering mesenteric artery (the arc of Riolan)
- Between the IMA and systemic circulation.

The watershed areas between the major vessels that supply the colon are at risk. Because of narrow terminal branches

- Splenic flexure –Griffiths' point
- Rectosigmoid junction –Sudeck's point



Physiology And Mechanisms Of Ischemia

- The splanchnic circulation receives between 10 to 35 percent of cardiac output, depending upon whether it is in the fed or fasted state.
- Although the capillary density within the intestinal vasculature is high, intestinal oxygen extraction is relatively low, thereby permitting sufficient oxygen to be delivered to the liver via the portal vein.
- As a result, intestinal blood flow must be reduced by at least 50 percent from the normal fasting level before oxygen delivery to the intestine becomes compromised

Liver Blood supply → celiac A → hepatic A
 ↘ portal vein

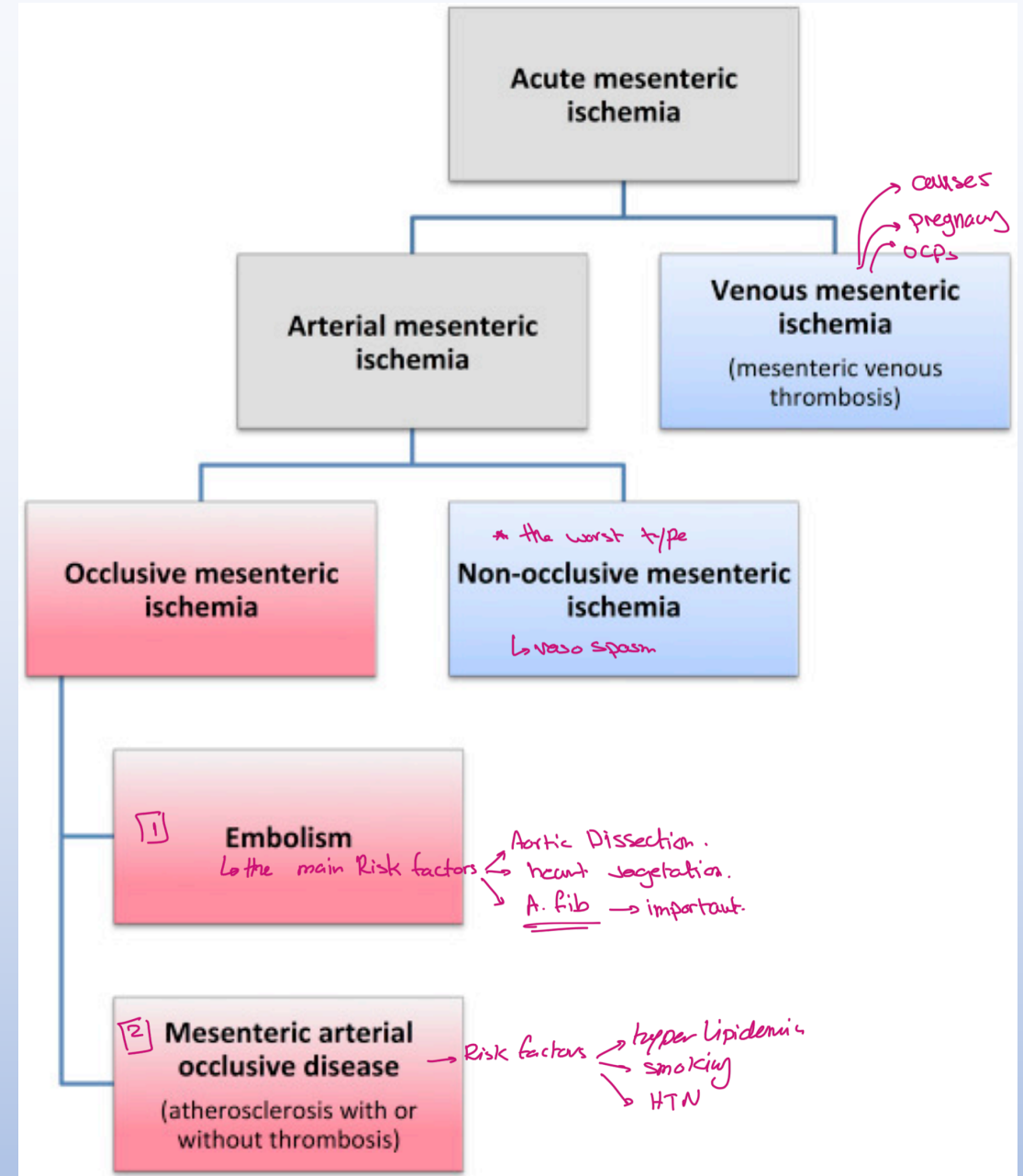
الفكرة: إن الـ intestine
 يسجها 1000 بالدم و يتصرف منها
 قليلاً بس 10 ← معناها لازم يكون
 Reduction 50% → More than 50% منخونها
 mesenteric ischemia كذا يسمى

Sircho's triad of DVT

- hyper coagulability
- Endothelial Damage
- Stasis

Classification

- The major etiologies of mesenteric ischemia are:
 - Mesenteric arterial embolism (50%)
 - Mesenteric arterial thrombosis (15 to 25%)
 - Mesenteric venous thrombosis (5%)
 - Nonocclusive mesenteric ischemia (20 to 30%)



Acute Mesenteric Arterial Occlusion → caused by Embolus

- The two major causes are mesenteric arterial embolism and mesenteric arterial thrombosis.
- Acute embolic mesenteric ischemia, causes a greater reduction in blood flow. → cuz no time to develop collaterals
- This is explained by having the opportunity to develop collateral pathways in the thrombotic one
- For some patients, progression from stenosis to occlusion can be asymptomatic due largely to a sufficient time course to develop these collaterals.



mortality Rate
in two scenarios →

Dul pt	<	non-Dul pt
old Age pt	<	healthy young pt.

Chronic mesenteric A. occlusion → mainly due to thrombosis
عشان او thrombus بيها وقت كبير ن

Risk Factors

Any process that increases the potential for embolism from the heart or proximal arterial vasculature or for arterial thrombosis

General risks (smoking, hypertension, hyperlipidemia, diabetes)

Risks for Embolism

- Cardiac Arrhythmias
- Cardiac Valvular Disease
- Infective Endocarditis
- Recent Myocardial Infarction
- Ventricular Aneurysm
- Aortic Atherosclerosis
- Aortic Aneurysm

Risks for Thrombotic Occlusion

- Peripheral Artery Disease
- Advanced Age
- Low Cardiac Output States
- Traumatic Injury
- Less Frequently, Vasculitis, Most Commonly Polyarteritis Nodosa

Nonocclusive Mesenteric Ischemia

→ No obstruction.
→ Severe vaso spasm.

- Due to primary mesenteric arterial vasoconstriction and hypoperfusion
- The majority of cases involve spasm of branches of the superior mesenteric artery (SMA)
- Risk factors for NOMI include:
 - Heart failure/cardiogenic shock
 - Aortic insufficiency
 - Septic shock
 - Cocaine abuse/methamphetamine abuse
 - Recent cardiopulmonary bypass
 - Chronic renal insufficiency/dialysis
 - Severe burns (associated hypovolemia/shock)
 - Vasoconstrictive medications

بدھم یرضوا منظره منبجھون های الادبیا.
ICU pt.

Venous Mesenteric Ischemia

- Mesenteric venous thrombosis can present acutely or in a subacute or chronic manner.
- **Idiopathic** (eg, hypercoagulable states) or from secondary causes (eg, malignancy or prior abdominal surgery).
- **Local factors** (eg, splenectomy, pancreatitis) appear to be associated with initial thrombus formation in the large veins, whereas systemic hypercoagulable states (eg, protein C deficiency) lead to thrombosis initiated in the small veins
- Mesenteric venous thrombosis rarely involves the colon (inferior mesenteric venous drainage)
- **Chronic mesenteric venous thrombosis is suggested by the presence of thrombus with well-developed collateralization, often in association with cavernous transformation** of the portal vein and in the absence of signs of intestinal ischemia or infarction.

→ Really huge cause of venous mesenteric ischemia

Represent a chronic sign for venous thrombosis.

كثرة قضي كيناد veins بجلوي ischemia
Venous congestion → Edema → Compress Arteries
ischemia ← occlusion ←

Colonic Ischemia

- When we said Acute mesenteric ischemia → SMA occlusion [small Bowel]
- but in Colonic ischemia → IMA occlusion. [Colon]

Result of a sudden, transient, reduction in blood flow, particularly prominent at the "watershed" regions of the colon.

→ splenic flexum
↳ Recto Sigmoidal Junction.

90 percent of patients over age 60 years

Acute precipitating cause is rare

Patients do not appear severely ill, mild abdominal pain

Usually transient and resolve without sequences

Rectal bleeding, bloody diarrhea typical

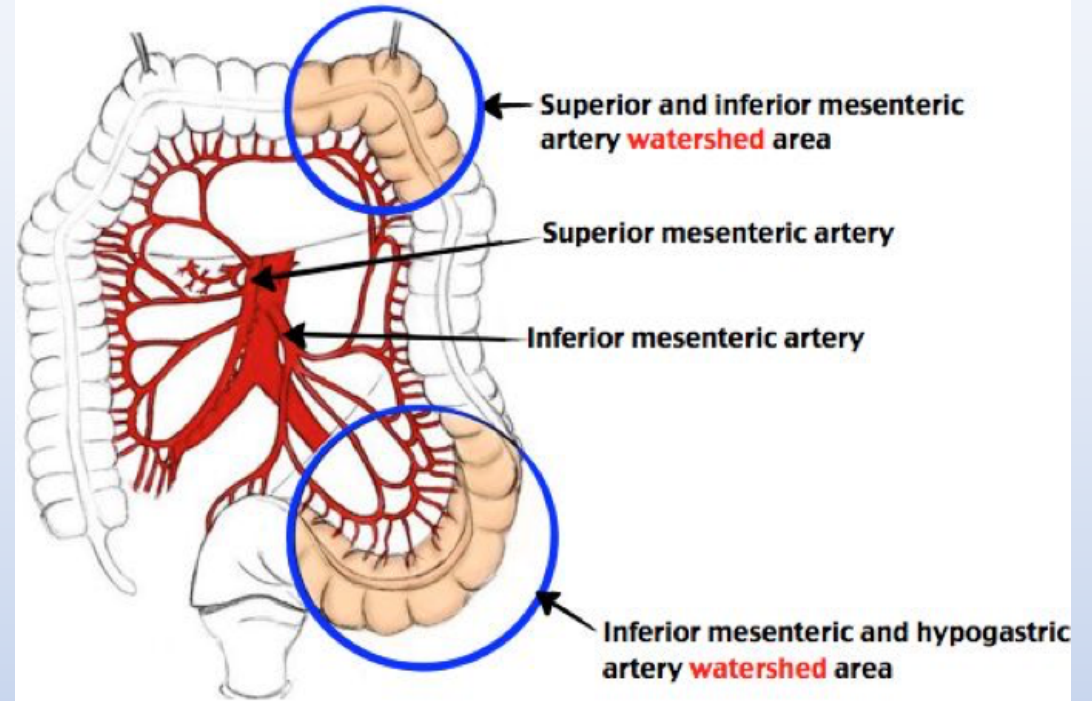
Colonoscopy is procedure of choice

Infrequent long-term complications, such as stricture or chronic ischemic colitis.

يمكن بيحي الكولون - perforation في بالعادة يكون mild presentation

Ischemic Colitis

Caused by a **global low flow state** (unlike embolic phenomenon in mesenteric ischemia)



Global Low Flow States

- Heart failure
- Myocardial infarction
- Sepsis
- Hemorrhage

Chronic Mesenteric Ischemia → *dueto thrombosis → Atherosclerosis*

- Patients with mesenteric atherosclerosis
- Typically over the age of 60 and are three times more likely to be female rather than male
- History of smoking, coronary heart disease, cerebrovascular disease, or lower extremity peripheral artery disease

Symptoms

- **"Intestinal angina."** dull, crampy, postprandial epigastric pain. *المريض يخاف يأكل* → low Blood supply.
→ high demand.
- abdominal pain with eating leads patients to avoid eating (food fear), and they typically lose weight
- Rare causes include median arcuate ligament syndrome (compression of the celiac artery from the median arcuate ligament of the diaphragm), fibromuscular dysplasia, aortic or mesenteric artery dissection, vasculitis, and retroperitoneal fibrosis

Clinical Features

- The diagnosis of acute mesenteric ischemia depends upon a high level of clinical suspicion

Arterial occlusion

Abdominal pain

- The classic clinical description is "abdominal pain out of proportion to the physical examination."
- Arterial embolism is typically sudden, severe, periumbilical, and often accompanied by nausea and vomiting.
- Thrombotic mesenteric arterial occlusion may report worsened postprandial pain
- Mesenteric venous thrombosis are more likely to present with a more insidious onset of abdominal pain
- Nonocclusive mesenteric ischemia (NOMI) is usually more variable

No peritoneal sign المرين يتراجع بس بالفحص

At early stage

Past medical history

- ✓ Previous embolic event, history or family history of DVT or PE
- ✓ symptoms of chronic mesenteric ischemia (Intestinal Angina)

5

Physical examination

Early sign →

- May be normal initially or show only mild abdominal distension with no signs of peritoneal inflammation.

late sign →

- As bowel ischemia progresses, the abdomen becomes grossly distended, bowel sounds become absent, and peritoneal signs develop.
- Signs consistent with dehydration and shock indicate a deteriorating clinical course.

Laboratory studies

- ✓ Nonspecific, **EVEN normal laboratory values do not exclude acute mesenteric ischemia.**
- Findings may include, marked leukocytosis, an elevated hematocrit, and a metabolic acidosis.
- **Elevated lactate and serum amylase levels**

↳ due to dehydration.

A useful clinical guideline is that any patient with acute abdominal pain and metabolic acidosis has intestinal ischemia until proven otherwise

Initial Management

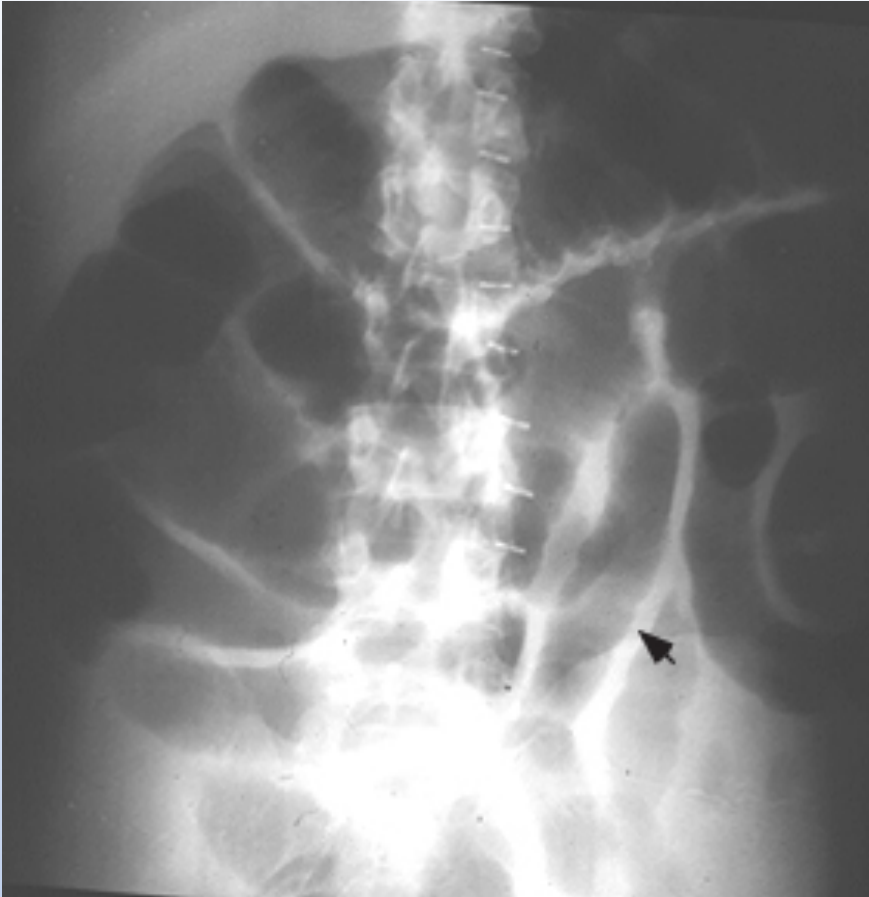
- Gastrointestinal decompression → NG Tube
- Fluid resuscitation
- Hemodynamic monitoring and support
- Correction of electrolyte abnormalities
- Pain control → for Any pain Before Reaching the diagnosis
- Anticoagulation under most circumstances
- Initiation of broad-spectrum antibiotics
- Avoidance of vasopressors
- Supplemental oxygen mo

For those without indications for immediate abdominal exploration, a definitive diagnosis requires advanced abdominal imaging.

Laparotomy indication → in case of peritonium signs

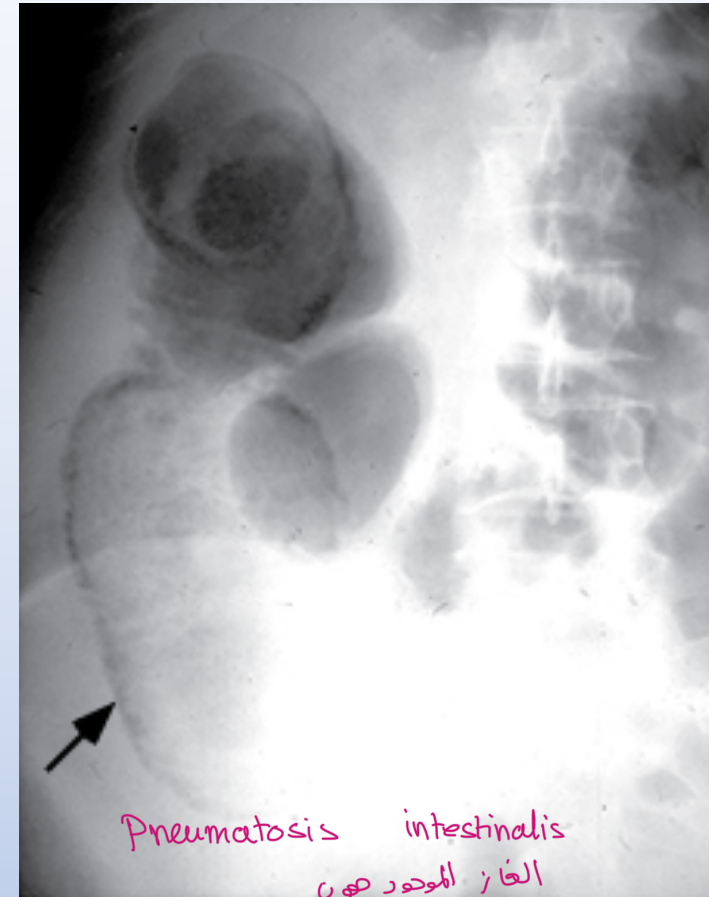
- Abd. distension
 - Air under diaphragm
 - Peritonitis
 - perforation
 - hemodynamic instability.
- } → After Resuscitation of fluid + Aox

Radiological Evaluation



Distended featureless loops of small bowel with wall thickening (arrow) and separation of the bowel loops

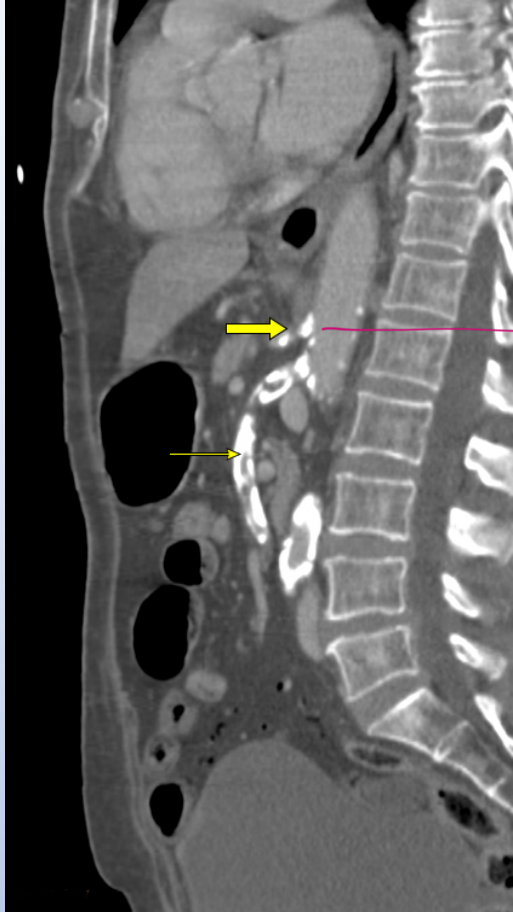
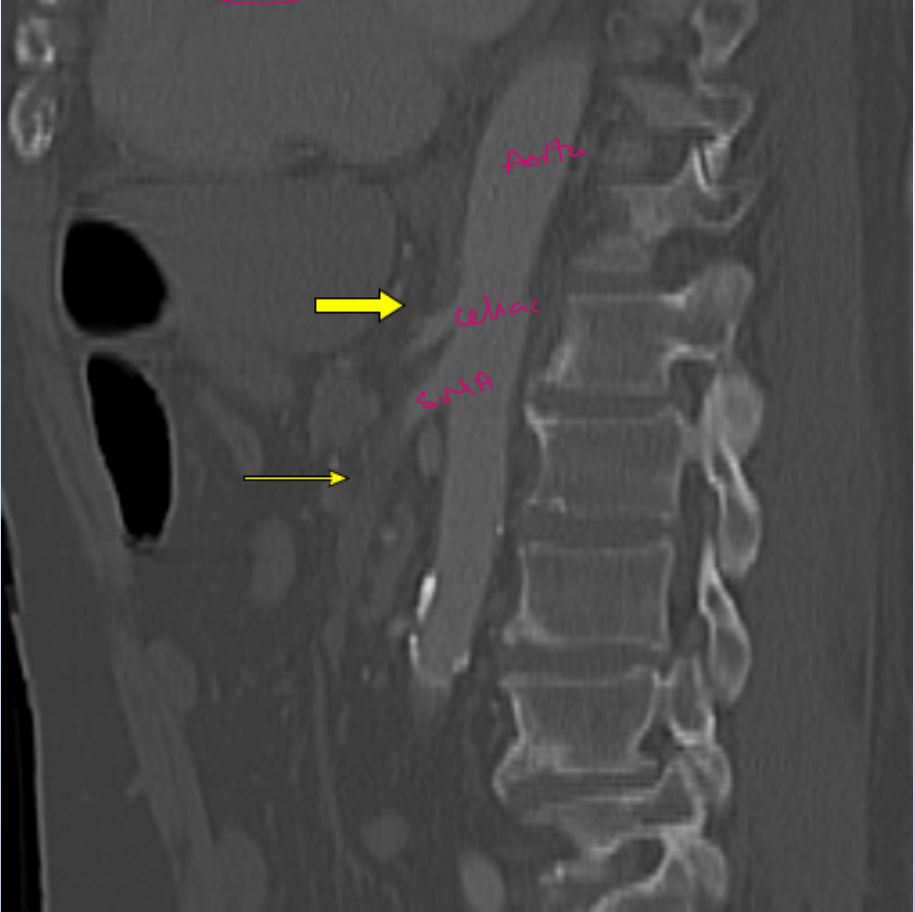
Bowel Edema



Pneumatosis intestinalis
الغاز الموجود حوّل
late sign of mesenteric ischemia → Air at the wall of the Bowel.
Air within the wall of the ascending colon (arrow)

بنتها بال Volvulus

MRI

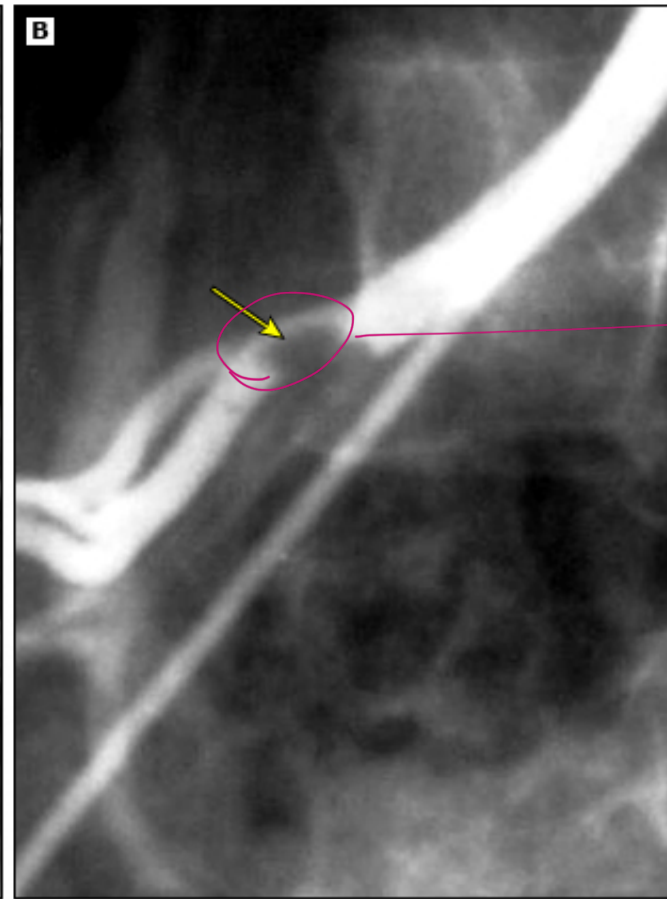
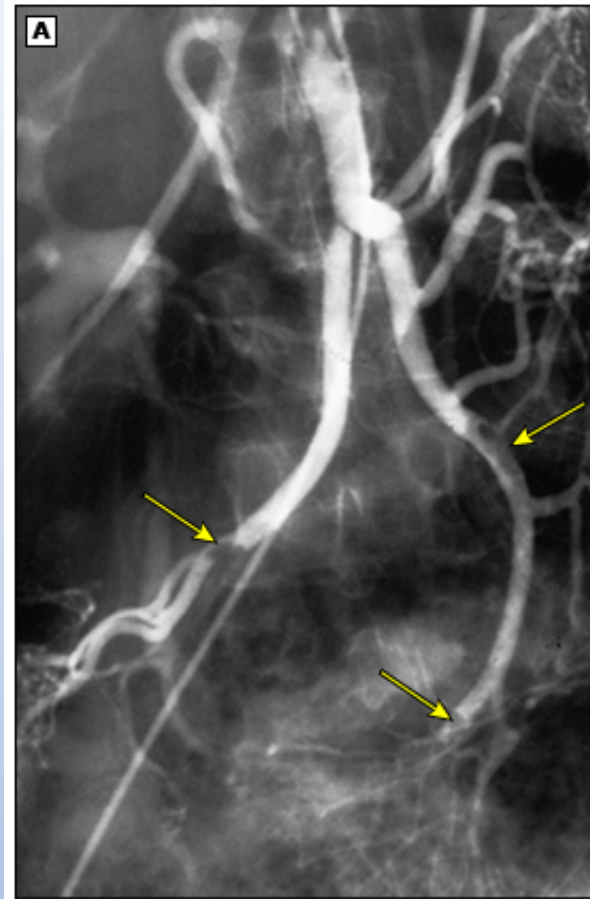


Calcification
↳ Atherosclerotic in origin

Conventional catheter-based arteriography is still recommended if the diagnosis of mesenteric ischemia remains in question

celiac JV Catheter مبدخل
OR
Aorta
OR
SMA

Blood Supply مبدشوف او
Supply



cut off
sign

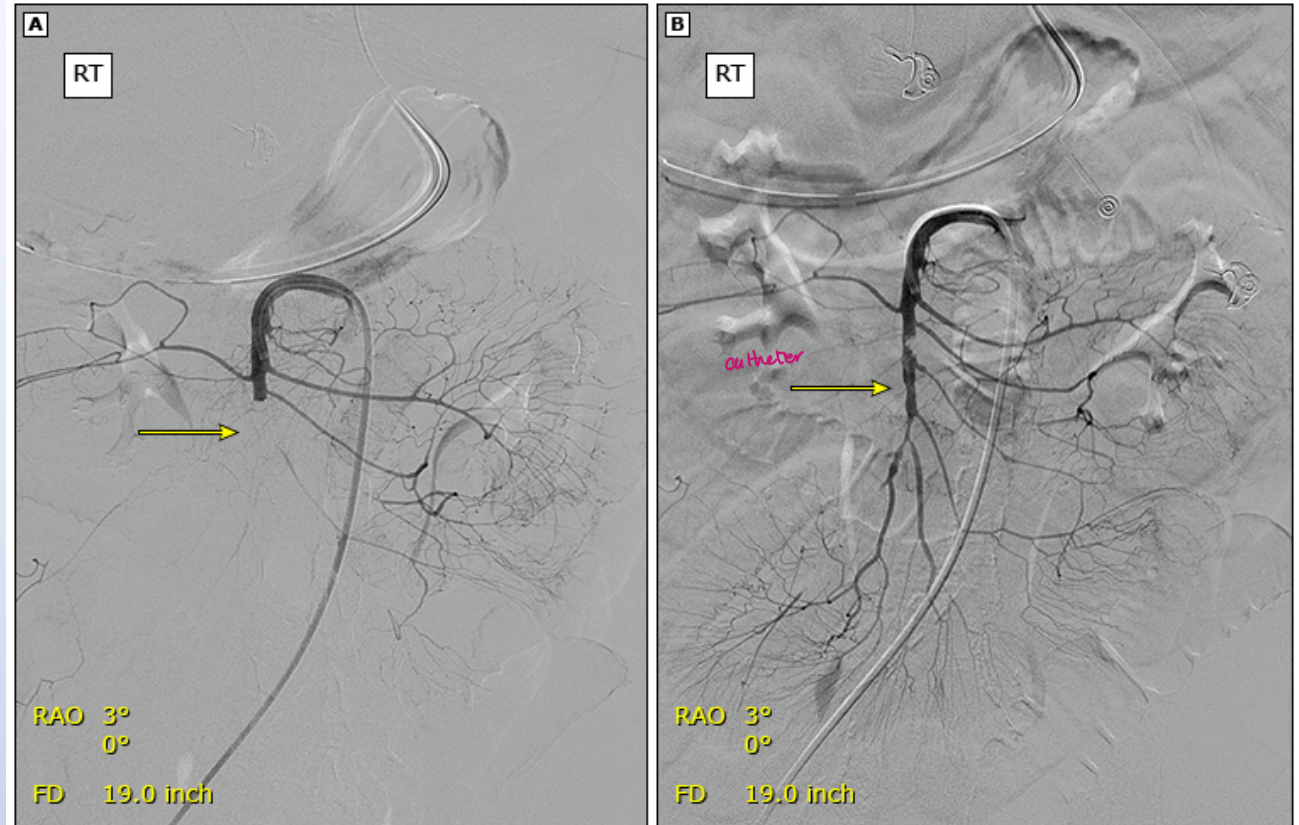
Management Of Acute Arterial Mesenteric Occlusion

Optimal treatment may include open, endovascular, or a combined approach.

- The traditional treatment of acute mesenteric arterial embolism is early surgical laparotomy with embolectomy
Embolus رينجيل ال Diad Bowel بنفتح البطن وينعكس ال
- An alternative approach for acute embolus, particularly in those with severe comorbidities, is local infusion of a thrombolytic agent → same as MI treatment → very early. *كل كسفتاه*
- For mesenteric arterial thrombosis, choices include surgical revascularization (mesenteric bypass), or thrombolysis with endovascular angioplasty and stenting
هذا ما انا انا! indication for laparotomy.
- The choice depends on the time course, severity of ischemia, and medical comorbidities of the patient.
- ✓ Patients who are good-risk surgical candidates with indications for immediate laparotomy such as peritonitis should be taken directly to the operating room for exploration.

Endovascular options for patients with mesenteric arterial occlusion include:

- Pharmacologic or mechanical thrombectomy
- Balloon angioplasty, typically with arterial stent placement



Questional Bowel Viability Intra Op

Remove Black Area (Died Area), leave viable (Pink Area)

والمنطقة التي صحتارين فيها بتركها كما نربطها perfusion بعد ان يرجع فتمها

وبنقرر

- Bowel of questionable viability should reassessed after perfusion is restored

خادول نتجنب نفوسها

الكثير من الازرق

to Avoid End up with Short Bowel Syndrome

→ Pink ①

presence of it → ②

Pulsatile → ③

- Color, distention, peristalsis, arterial pulsations in the mesenteric arcades, and bleeding from cut surfaces, should be assessed. → presence of 1+2+3 that means Bowel is alive.

- The presence of Doppler signals over the serosal surface may be helpful in identifying potentially salvageable ischemic segments to be left in place for reevaluation at second-look operation

الطريقة

الآخيرة

- Intravenous injection of fluorescein dye with inspection of the intestine illuminated via a Wood's lamp can assist in determining remaining bowel viability.

* Resect the Died Bowel then Return after 24 h and Re-check [Exploratory] the Bowel again to assess the Questionable Bowel.

إذا صحتارنا كثير فذاك small bowel
 pt. will end with Short bowel syndrome and here we have no Enough Area to Absorb Nutrients and Pt. need Life long Parental Nutrition



← إلى آخذ لون ← alive
 ← وما آخذ لون ← Died

Long-term Medical Management

- Aimed at the prevention of future embolic events, typically with the use of vitamin K antagonists or novel oral anticoagulants - warfarin
- Following revascularization of thrombotic arterial occlusion due to atherosclerosis, medical management of peripheral artery disease includes antiplatelet therapy and statin therapy as part of a cardiovascular risk reduction strategy.

Treatment Of Specific Etiologies

Mesenteric venous thrombosis

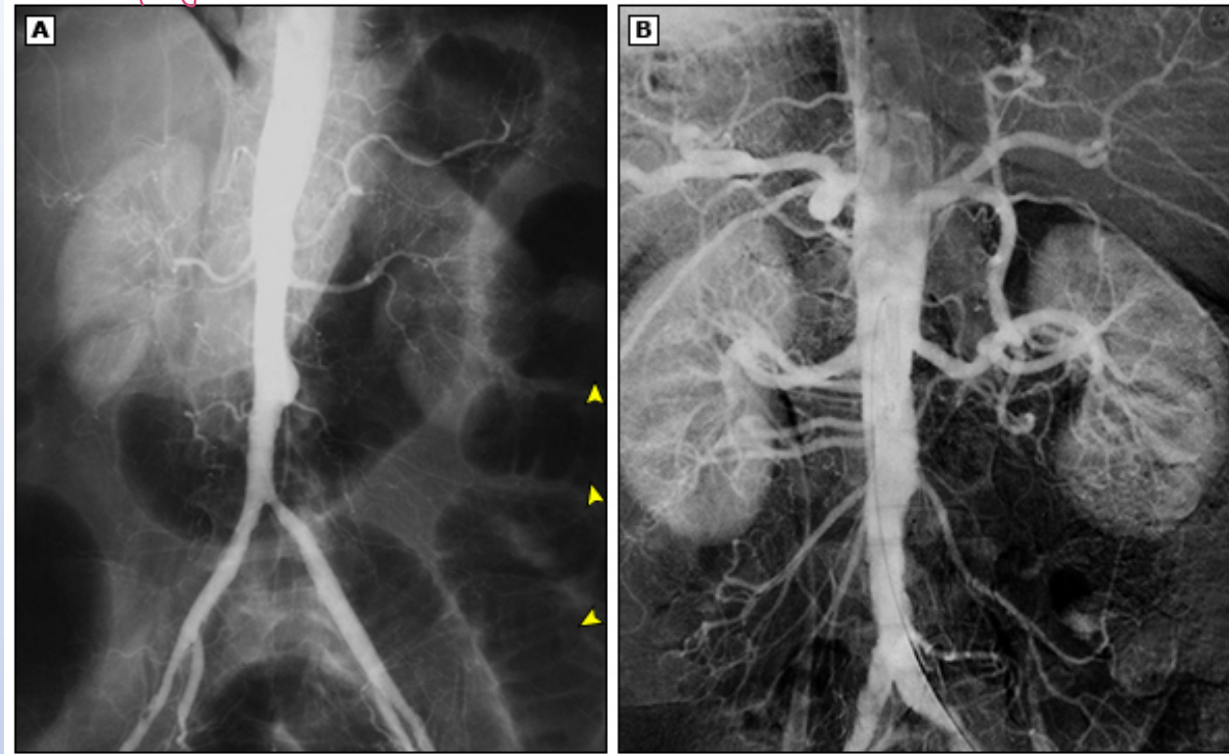
- Predominantly conservative, consisting of systemic anticoagulation to minimize extension of thrombus, bowel rest, and careful, serial observation for any signs of clinical deterioration
- Venous thrombolysis has been reported in small case series. → Not that effect like Arterial thrombolysis.
- Surgical exploration is limited to those patients with definite signs of bowel infarction.
- Hypercoagulability testing should include protein S, protein C, and antithrombin III, factor V Leiden mutation, activated protein C resistance, anticardiolipin antibodies, antiphospholipid antibodies, or lupus anticoagulant.

Nonocclusive mesenteric ischemia

- The treatment of nonocclusive mesenteric ischemia focuses on removing inciting factors (vasoconstrictive medications), treating underlying causes (heart failure, sepsis), hemodynamic support and monitoring, and intra-arterial infusion of vasodilators, if necessary
- Selective infusion of the SMA with papaverine or other vasodilator is an option but is uncommonly performed today.

vaso dilator

Worst prognosis.



Morbidity And Mortality

In general mortality rates exceed 60 percent

- Patients who survive an acute event are likely to die of complications related to the underlying condition.
- Time to diagnosis and treatment is paramount to survival for acute mesenteric ischemia patients.
- Advanced mesenteric ischemia requiring bowel resection is associated with a 15-fold increase in mortality.
- Acute mesenteric venous thrombosis has a better prognosis than other forms of acute mesenteric ischemia
- Nonocclusive intestinal ischemia has the poorest survival rate among the various etiologies of mesenteric ischemia. Mortality rate of 70-90%
- For those who survive massive bowel resection, short bowel syndrome and life long TPN.

THANK YOU