

Ileus

Definitions

- Interruption of the normal propagation of intestinal contents due to decreased motor activity
- Synonyms;
 1. functional
 2. Paralytic
 3. adynamic

Etiology

May involve large bowel , small bowel or even segment

1. Peritonitis Most common
2. Postoperative
3. Stress, sepsis, hypoperfusion, hypoxia
4. Trauma
5. Drugs, narcotics, anticholinergics, sedatives,... etc.
6. Metabolic, electrolyte disturbances, DKA, organ failures
7. Idiopathic

Distribution

- ❑ Generalized *In small and large bowel*
- ❑ Localized
 - Small bowel as in pancreatitis
 - Large bowel as acute appendicitis

Diagnosis clinical

- ❖ The predisposing factor Trauma, hypokalemia
- ❖ Constipation or obstipation
- ❖ Abdominal distention
- ❖ Vomiting or regurge
- ❖ Diminished bowel sounds Due to lack of peristalsis movement
- ❖ Minimal or no abdominal pain

Minimal abdominal pain and diminished bowel sounds are the major distinguishing in btw ileus and mechanical obstruction

Diagnosis radiological



Erect abdomen, air-fluid levels



Postoperative ileus

- Affects small and large bowel
- Small bowel regains activity before the large (usually within hours)
- May last few days
- CT scan is the best modality to distinguish postop ileus from postop mechanical obstruction

General Management

1. NPO Nothing orally intake allowed (nothing by mouth)
2. Nasogastric intubation
3. Fluid and electrolyte resuscitation
4. Reverse the primary cause
5. Use of prokinetic drugs ? E.g. metoclopramide or neostigmine

Colonic Obstruction

Etiology

The most common causes of **adult** large-bowel obstruction

- **Neoplasm** (benign or malignant)
- **Stricture** (diverticular or ischemic)
- **Volvulus** (colonic, sigmoid, cecal)
- **Intussusception**, usually with an identifiable anatomic abnormality in adults but not in children
- **Impaction**

Pathophysiology

The pain from colonic obstruction in the left side usually cause a hypogastric pain

- Bowel dilatation above the obstruction causes
 - Dehydration and electrolyte abnormalities.
 - Bowel edema and ischemia increase the mucosal permeability of the bowel
 - Bacterial translocation and systemic toxicity
 - Bowel ischemia can lead to perforation and fecal soilage of the peritoneal cavity.
- In cases of closed loop obstructions, such as colonic obstruction in the presence of a closed ileocecal valve or incarcerated hernia, this process may be accelerated.
- The cecum is the area most likely to perforate (Laplace law)

Cecum has the largest diameter according to Laplace law the tension of the wall is directly proportional to the diameter. (the large diameter the more likely it will become ischemic)

Colonic obstruction

- ❑ It is important to distinguish colonic obstruction from ileus, and differentiate between a true mechanical obstruction and a **pseudo-obstruction**, as the treatment differs.
- ❑ Colonic obstruction is more common in elderly individuals, due to the higher incidence of neoplasms and other causative diseases in this population.
- ❑ In neonates, colonic obstruction may be caused by an imperforate anus or other congenital anatomic abnormalities

clinical

History

- **Bowel movements**, flatus, obstipation And constipation
- Attempt to distinguish complete bowel obstruction from partial obstruction, which is associated with passage of some gas or stool.
 - Partial obstruction we have a time to study the case by colonoscopy.
 - Complete obstruction we have to manage as quick as possible.
- Also inquire about the patient's current and past history

clinical

History

- **abdominal pain**
 - Rt. Side abdominal pain totally mimic the small bowel obstruction .
 - Lt. side abdominal pain which is supplied by parasympathetic outflow , it's not usually colicky pain it may be intermittent.
- **abdominal distention** Distension is prominent because of the colonic obstruction
- **nausea**
- **Vomiting** Delayed symptom

clinical

History

If these symptoms developed acutely then this suggest something like volvulus .

- An abrupt onset of symptoms makes an acute obstructive event (e.g., cecal or sigmoid volvulus) a more likely diagnosis.
- A history of chronic constipation, long-term cathartic use, and straining at stools implies diverticulosis or carcinoma.
- Changes in the patient's caliber of stools strongly suggest carcinoma. When associated with weight loss, the likelihood of neoplastic obstruction increase

clinical

Physical Examination

- Abdominal distention is prominent
- The bowel sounds may be normal early
- the abdomen is hyperresonant to percussion. Tympanic note of percussion.
- Fever, severe tenderness, and abdominal rigidity are ominous signs that suggest peritonitis secondary to strangulation or perforation. We should not wait in your patient until develop these symptoms

clinical

Physical Examination

- The presence of rigidity or peritoneal signs may be indicative of another intra-abdominal process, such as an abscess.
- Sigmoid diverticulitis and a perforated sigmoid secondary to carcinoma are clinically difficult to differentiate. Difficult to differentiate btw them physically , CT scan and even by colonoscopy
- A rectal or lower sigmoidal mass may be palpated on rectal examination.
- An abdominal mass or fullness may be palpated

clinical

Physical Examination

- Evaluation of the inguinal and femoral regions should be an integral part of the examination in a patient with suspected large-bowel obstruction.
 - Incarcerated hernias represent a frequently missed cause of bowel obstruction. In particular, colonic obstruction is often caused by a left-sided inguinal hernia with the sigmoid colon incarcerated in the hernia
- We should look to all hernial orifices .*

clinical

Physical Examination

Digital rectal examination

- Perform a digital rectal examination (DRE) to verify the patency of the anus in a neonate.
- The examination focuses on identifying rectal pathology that may be causing the obstruction and determining the contents of the rectal vault.
- Hard stools suggest impaction
- An empty vault suggests obstruction proximal to the level that the examining finger can reach.
- Fecal occult blood testing should be performed. A positive result may suggest the possibility of a more proximal neoplasm. *Blood indicates tumor or strangulation*

Plain radiographs

- An upright chest radiograph is useful to screen for free air which would suggest perforation.
- Flat and upright abdominal radiographs can help distinguish severe constipation from bowel obstruction.
- Plain films may also help localize the site of obstruction (large vs small bowel).
- Sigmoid or cecal volvulus may have a kidney-bean appearance on the abdominal films
- Intramural air is an ominous sign that suggests colonic ischemia.
- The absence of free air does not exclude perforation

Sigmoid volvulus



In this X- ray
which we can
see a volvulus of
sigmoid colon .
As well as we see
dilation of the
proximal part of
the colon ,even
the cecum is
dilated (rt.
Side of the pt.)

Cecal volvulus



Contrast studies

- include an enema with water-soluble contrast
- Contrast studies that reveal a column of contrast ending in a "bird's beak" are suggestive of colonic volvulus.

Contrast enema in sigmoid volvulus



Computed tomography

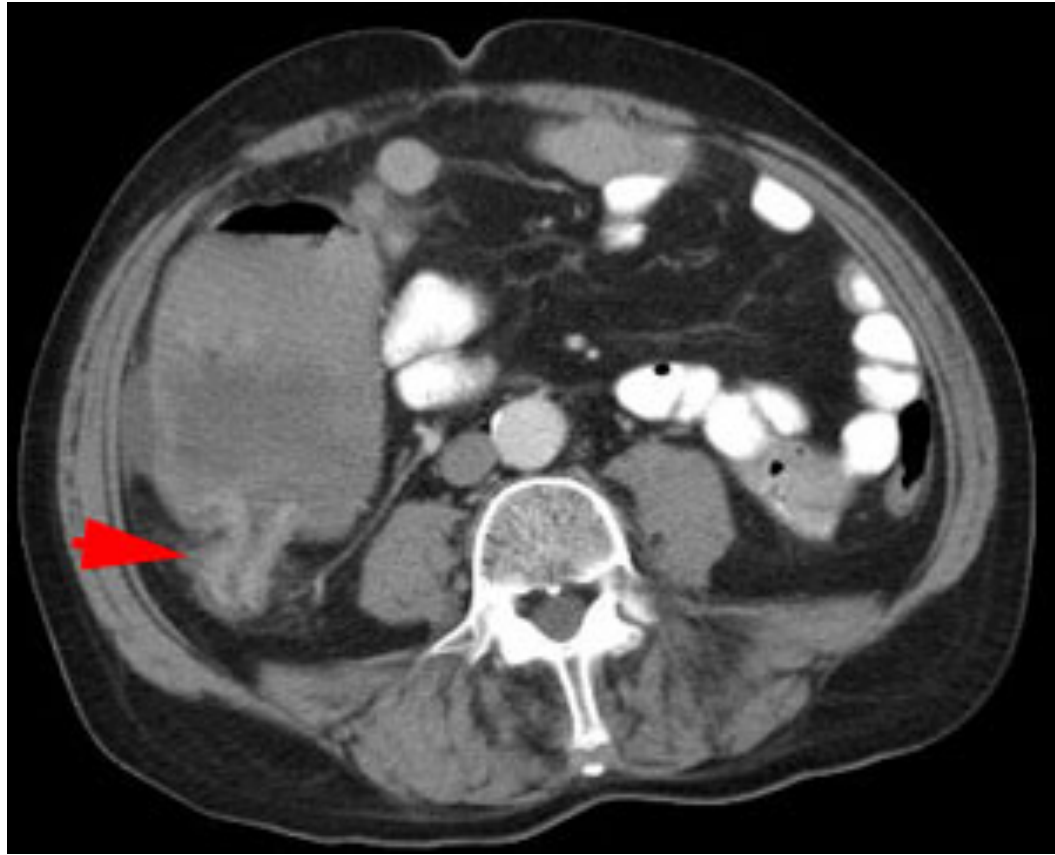
- CT scanning is the imaging of choice if a colonic obstruction is clinically suspected.
- Contrast-enhanced CT (PO and IV) can help to delineate between partial and complete obstruction, ileus, and small-bowel obstruction.
- water-soluble contrast should be used preferentially

Try not to use barium solutions

CA colon

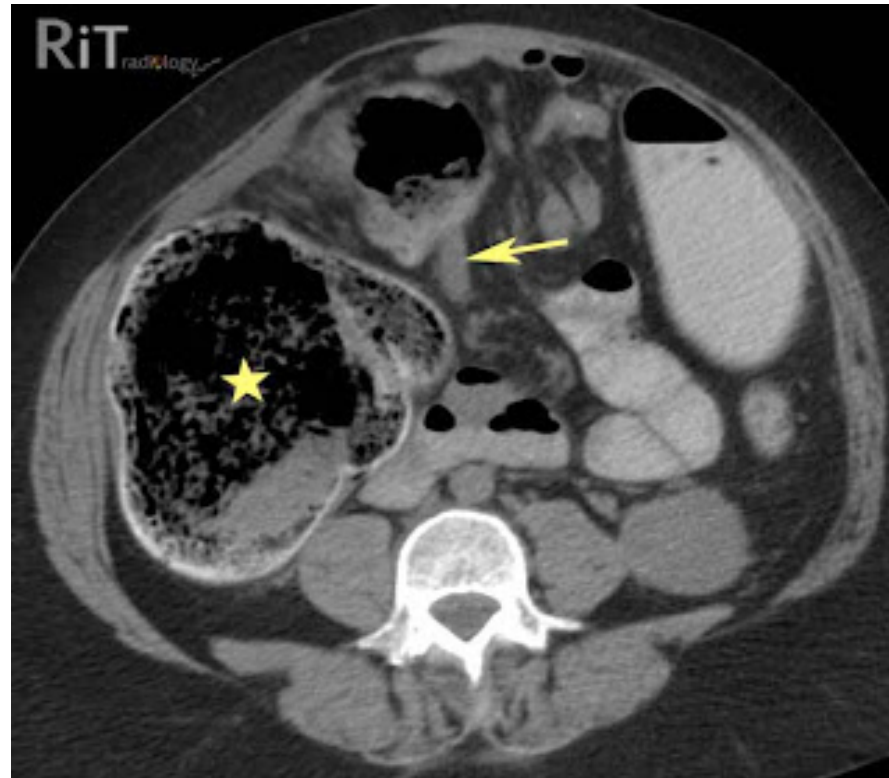


CA colon

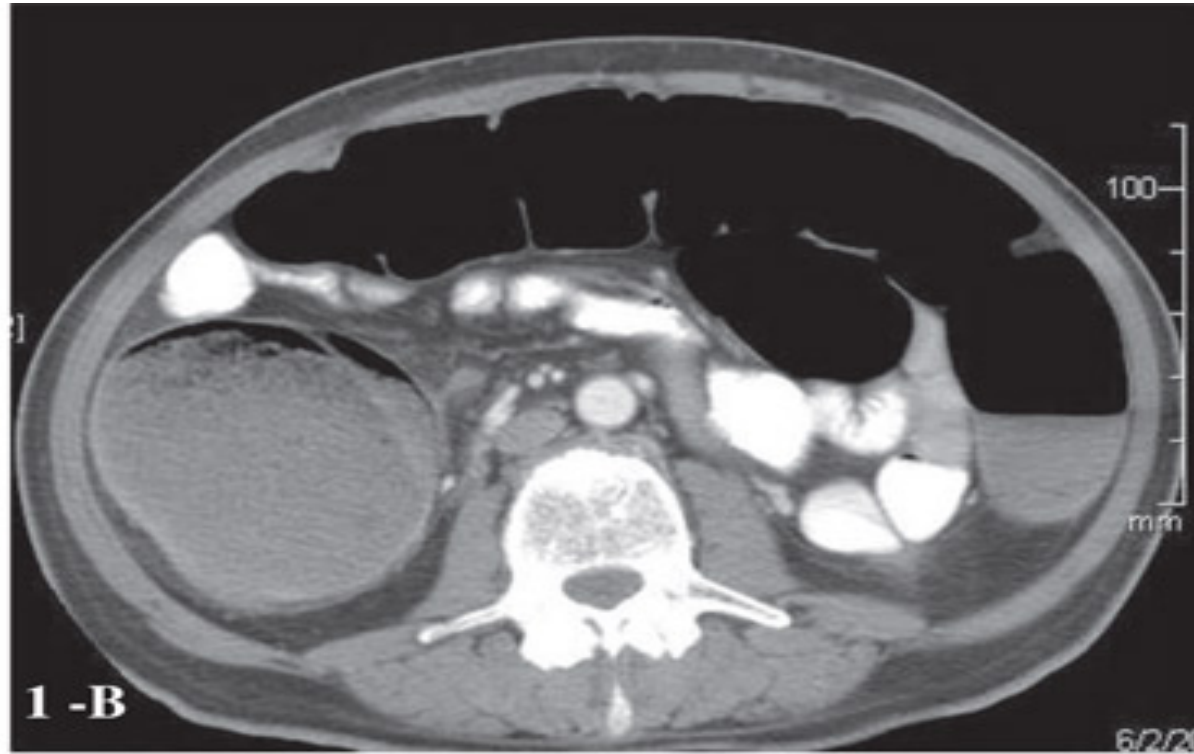


Closed loop colonic obstruction

Star shape represents massive dilation of the cecum which is responsible for ischemia and perforation of the cecum (because as we said before has the most largest diameter)



Ogilvie syndrome



No obstruction pathology, but there is rt. Colon dilation.

Labs

- Routine complete blood cell count
- CBC
- serum chemistries
- urinalysis.
- type and crossmatch.

Management

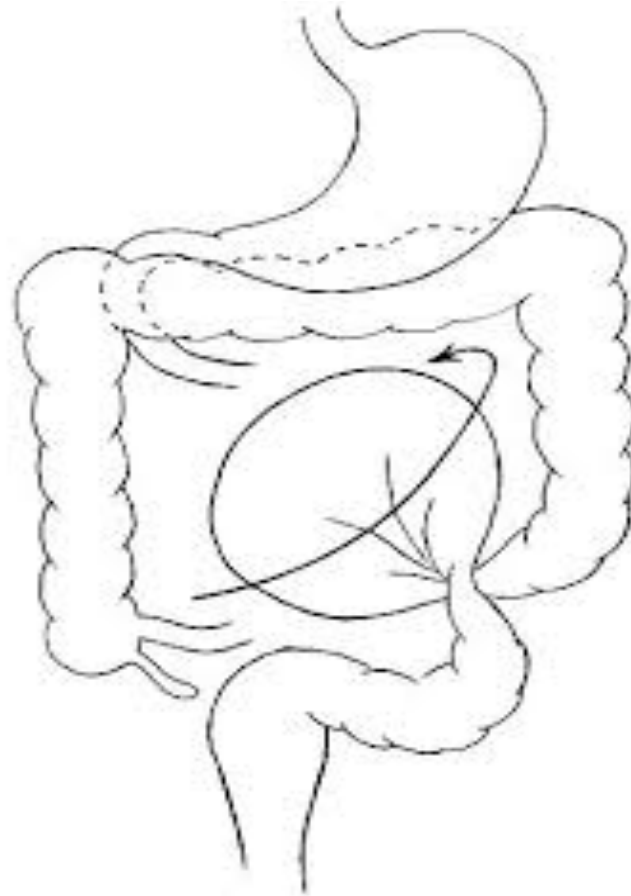
Initial therapy in patients with suspected large-bowel obstruction

- volume resuscitation
- appropriate preoperative broad-spectrum antibiotics
- A nasogastric tube should be considered for patients with severe colonic distention and vomiting.
- intravenous fluid (IVF) resuscitation with isotonic saline or Ringer
- Surgical intervention is frequently indicated, depending on the cause of the obstruction. Closed loop obstructions, bowel ischemia, and volvulus are surgical emergencies Surgical emergencies (things that mentioned in the last point)

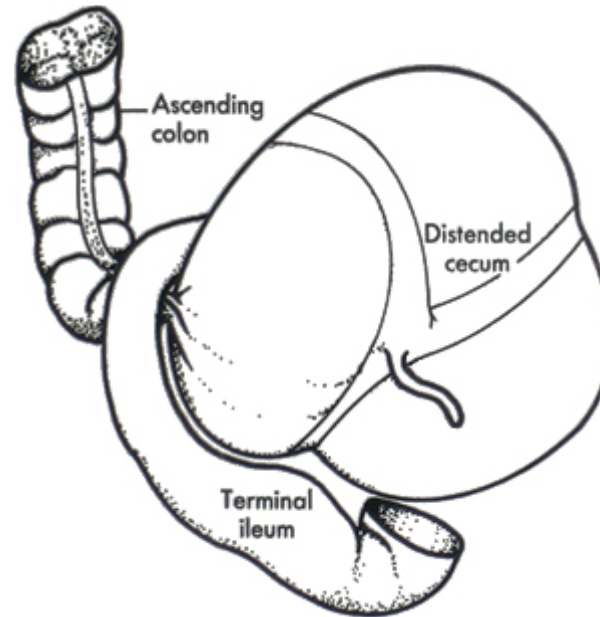
Volvulus

- ❑ when the colon twists on its mesentery, which impairs the venous drainage and arterial inflow. The cecum and sigmoid colon are most commonly affected.
- ❑ Volvulus typically occurs in elderly, debilitated individuals; patients living in an institutionalized setting; or patients with a history of chronic constipation (western type).
- ❑ African type is related to high fiber diet
- ❑ during pregnancy, most commonly occurring in the third trimester

Volvulus (sigmoid)



Volvulus (cecal)



Volvulus management

- Endoscopic reduction and decompression of a sigmoid volvulus can be performed in the absence of peritoneal signs. This procedure is also contraindicated when evidence of mucosal ischemia is present on endoscopy
- Recurrence after decompression is as high as 50%; thus, surgical resection is indicated.
- Emergency surgery is indicated in patients with evidence of perforated or ischemic bowel, or if attempts at endoscopic reduction and decompression are not successful.
- The preferred treatment for cecal or transverse colon volvulus is surgical resection and anastomosis.
- Endoscopic detorsion and decompression is an option when the patient is a poor surgical candidate.

Volvulus (sigmoid)



Intussusception

- Intussusception is primarily a pediatric disease
- between 5% and 16% of all intussusceptions in the Western world occur in adults.
- Two thirds of adult intussusception cases are caused by tumors.
- Two main types of intussusception affect the large bowel: enterocolic and colocolic.
- Enterocolic intussusceptions involve both the small bowel and the large bowel. These are composed of either ileocolic intussusceptions or ileocecal intussusceptions, depending on where the lead point is located.
- Colocolic intussusceptions involve only the colon. They are classified as either colocolic or sigmoidorectal intussusceptions

intussusception

- A contrast enema (barium or air) can successfully reduce 60-80% of intussusceptions. It is often successful in children in whom a pathologic leading point for the intussusception is unlikely.
- In adults, typically a pathologic leading point for the intussusception is present. Reduction with a contrast enema is far less likely, and patients are more likely to require surgery to deal with their pathology.
- Surgery is indicated if there are signs of peritonitis or bowel perforation, or if attempts at reduction by contrast enema are unsuccessful.
- Intussusception may recur in approximately 3% of patients after contrast enema reduction and 1% of patients after operative repair

Acute colonic pseudo-obstruction/Ogilvie syndrome

- ❖ Ogilvie syndrome, is thought to result from an autonomic imbalance, which results from decreased parasympathetic tone or excessive sympathetic output.
- ❖ is characterized by a loss of peristalsis and results in the accumulation of gas and fluid in the colon.

Acute colonic pseudo-obstruction/Ogilvie syndrome

- ❖ This condition usually occurs in the setting of a wide range of medical or surgical illnesses.
- ❖ If untreated, colonic ischemia or perforation can occur.
- ❖ The right colon and cecum are most commonly involved.
- ❖ The risk of perforation ranges from 3-15%

Ogilvie syndrome

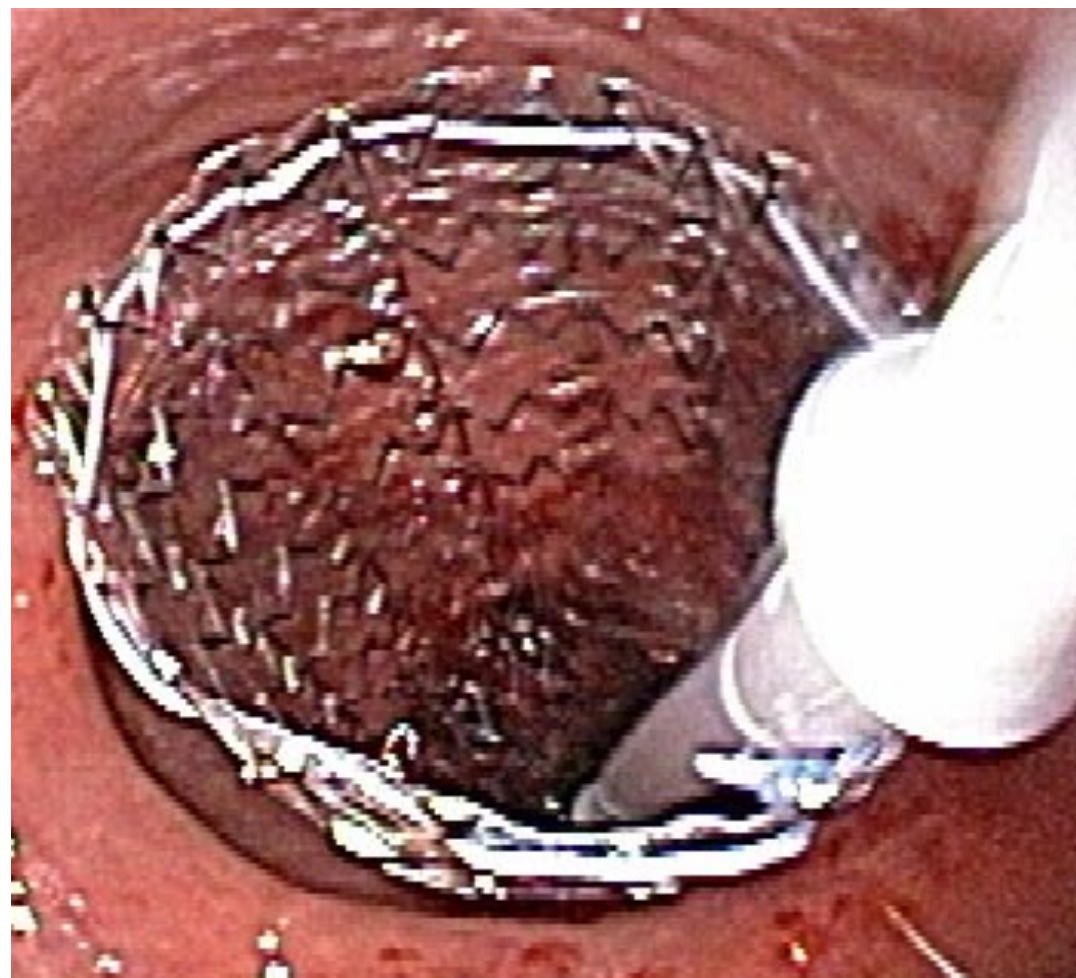
Management

1. If no perforation is present, pseudo-obstruction is treated with conservative management for the first 24 hours. This includes bowel rest, hydration, and management of underlying disorders.
2. Pharmacologic treatment with neostigmine, tap water enemas, octreotide drip and rectal tube insertion
3. colonoscopic decompression may be effective in cases that do not resolve with conservative management
4. Colonoscopic decompression may be successful in as many as 80% of patients with acute colonic pseudo-obstruction.
5. Surgical intervention for acute colonic pseudo-obstruction is associated with a high mortality and morbidity. This treatment is reserved for refractory cases or cases complicated by perforation.

Left colon carcinoma

- Surgical treatment of left colon carcinoma includes
 1. resection without primary anastomosis
 2. resection with primary anastomosis and intraoperative lavage
- Endoscopically placed expandable metal stents can be used to relieve the large-bowel obstruction, thus allowing for a primary colorectal anastomosis

Stenting



Right colon cancer

- Right colectomy and a primary anastomosis between the ileum and the transverse colon.
- Patients with high-risk features for surgery (advanced age, complete obstruction, or severe comorbidities) may benefit from stent placement until the patient can be optimized for a surgical procedure
- Palliative colorectal stents are an option in patients who are poor surgical candidates or have advanced cancer.

Diverticular disease (stricture)

- Patients with persistent obstruction secondary to diverticular disease despite appropriate medical management are treated surgically.
- Surgical resection follows the same principles as the treatment of **carcinomas**.
- Elective colonic resection is offered to patients with recurrent disease.

Extra note : pay attention carcinoma is not one of the complications that occurs in diverticular disease

Complications of colonic obstruction

- Perforation
- Peritonitis from bowel perforation secondary to rough attempts at reduction of a volvulus or intussusception, or injudicious attempts to dilate or stent an unsuitable colonic obstruction
- Sepsis; Seen more frequently in cases in which a delay in diagnosis or treatment occurred
- Intra-abdominal abscess from anastomotic leakage
- Dehydration and electrolyte disturbance
- Death

Prognosis

- In general, overall mortality rates for large bowel obstructions are 20%, which increases to 40% if there is colonic perforation.
- The mortality rate for acute colonic pseudo-obstruction is 15% with early care; mortality increases to 36% if colonic ischemia or perforation develops