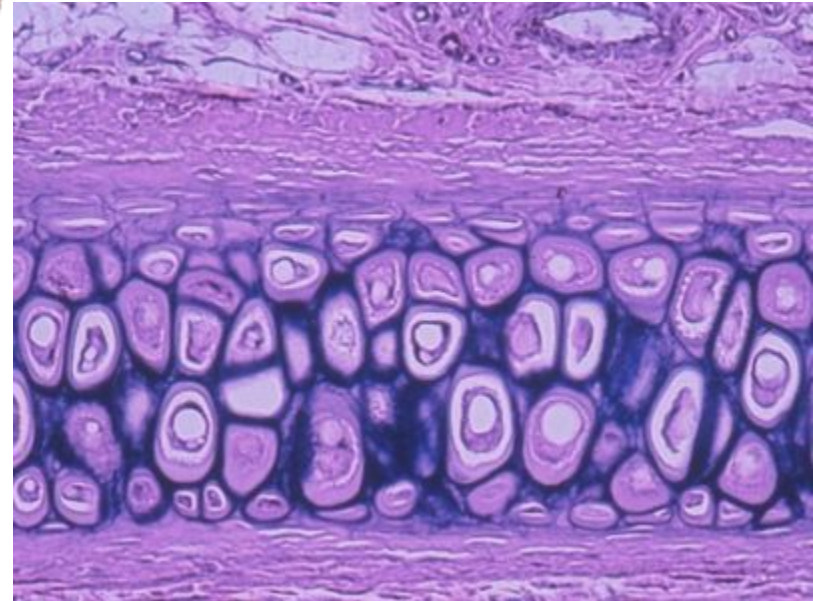


O A

Degenerative \neq Aging
↓
geriatric



cartilage



Avascular

*bone is the only connective tissue that retain 100% strength after fracture.

connective tissue

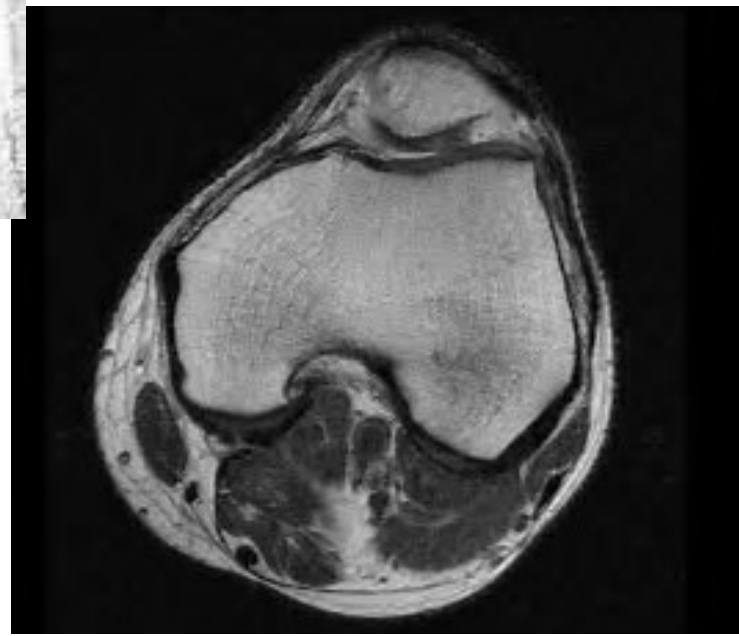
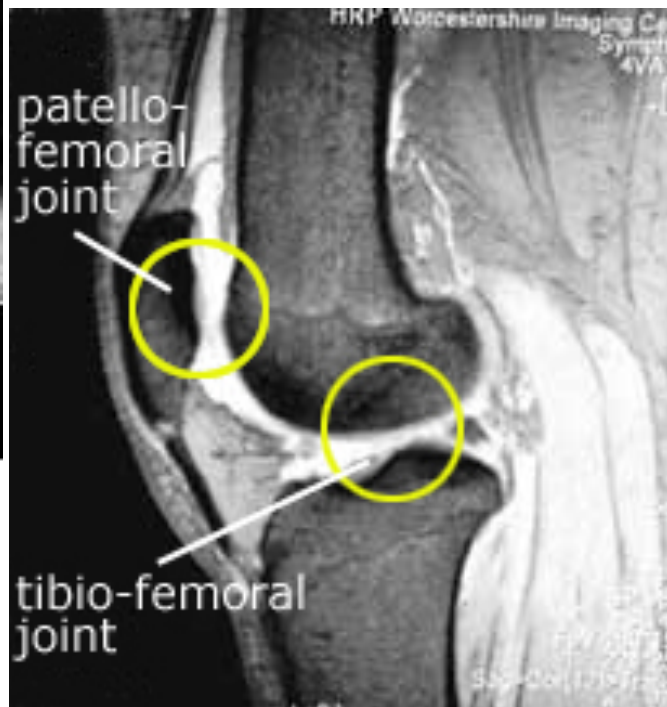
Aneural

Alymphatic

So very poor healing



Knee - Normal ACL



thickest Cartilage in the body is Under Patellar Surface.



- Deformity. change the distribution of same weight on the joint.
- Trauma.
- Infection. ex. Septic
- Bleeding ex. Hemophilia
- Inflammation.
- Metabolic. ex Gout & Pseudogout
- Unknown.

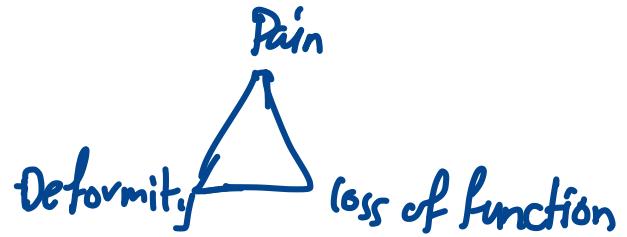
septic arthritis in children is an emergency. (top one in orthopedic)



Pain

No Morning stiffness.

From the first step



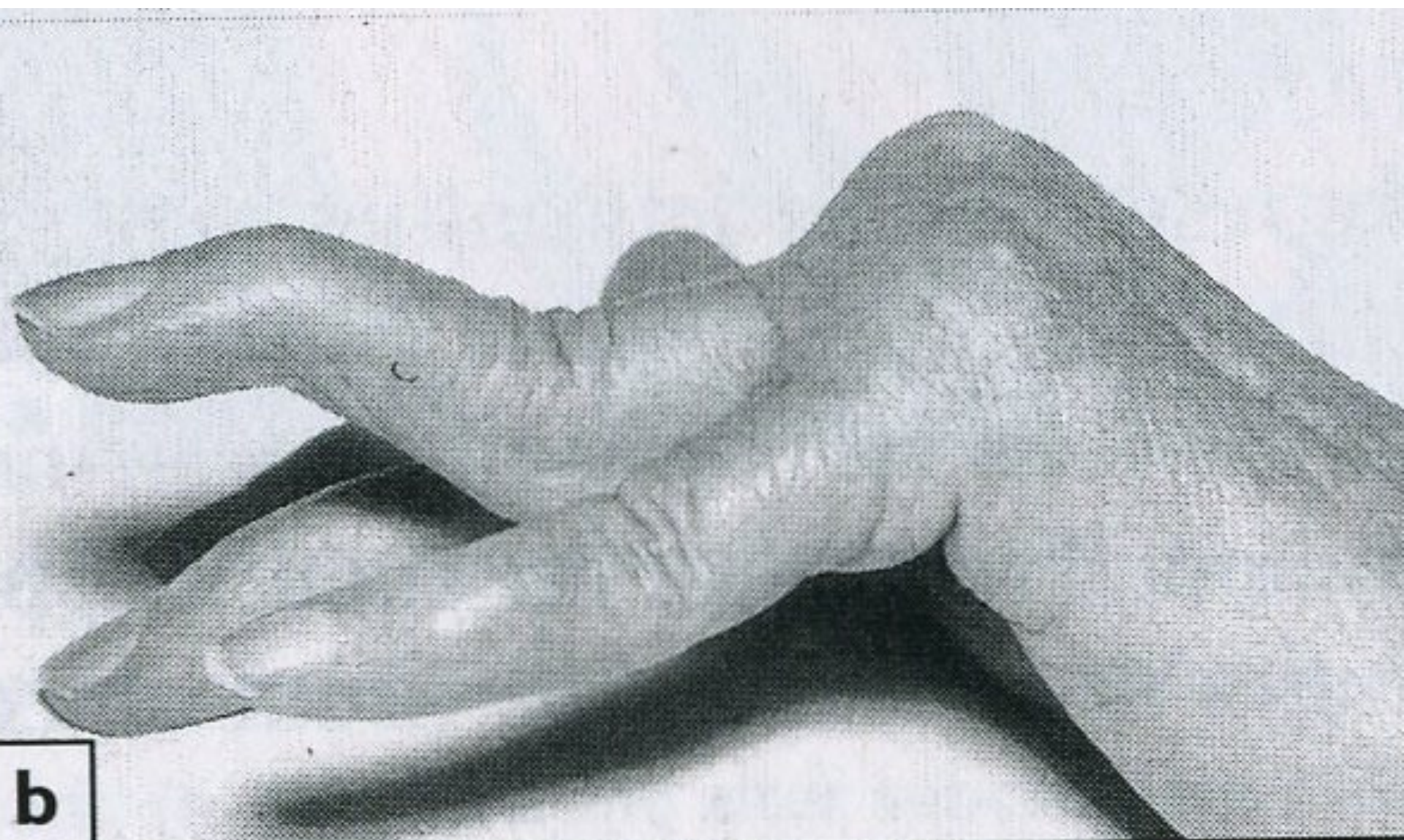
* ADL : activity of daily
Living

Deformity

lose of function



Figure 1 Patient with severe dislocation of both wrists.



Hx → physical
↓
Investigation



RA for 30 years
Pain on Right
Knee

→ atrophy RT
Limb on comparison
with LT leg

→ Valgus
deformity

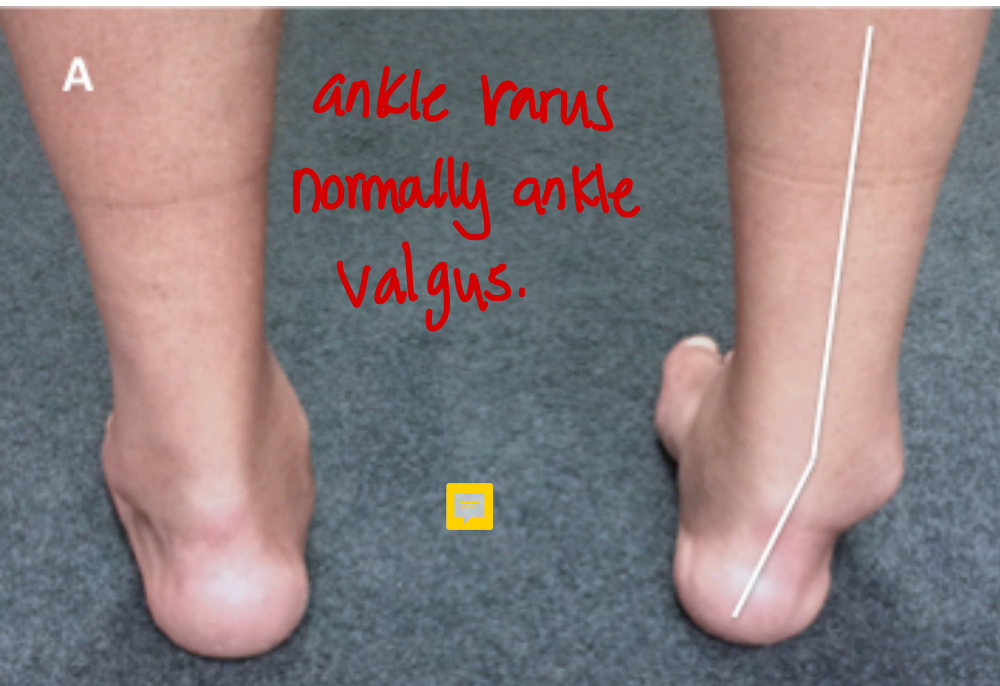
long standing
bilateral knee pain

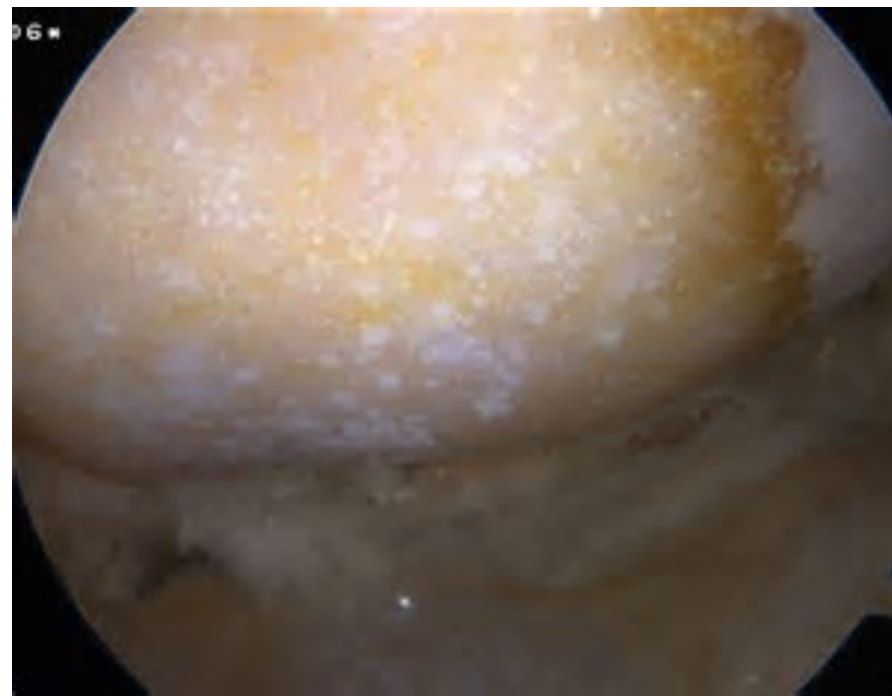
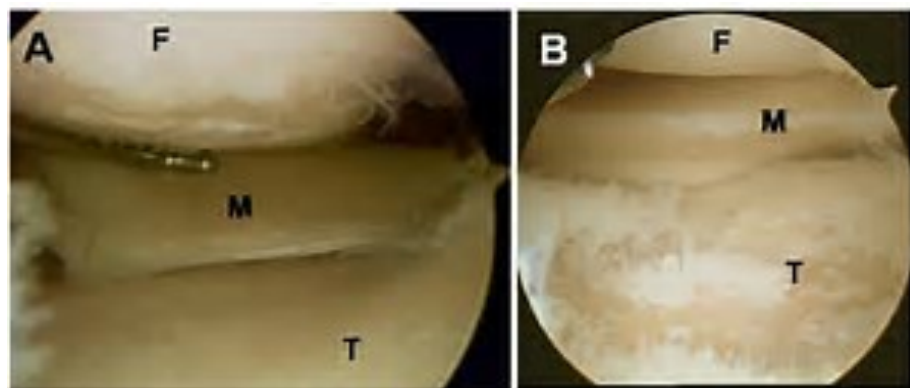
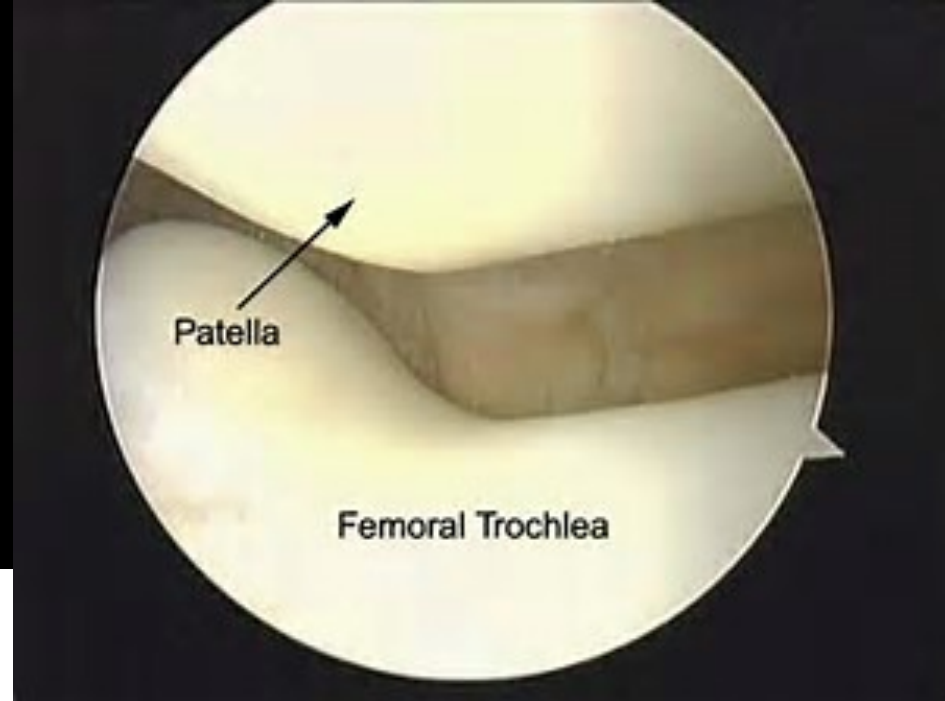
bow legs

genuvarus.

↓
knee







X-ray



Figure 1



Figure 2

1) Narrow joint space 2) Osteophytes



Rheumatoid





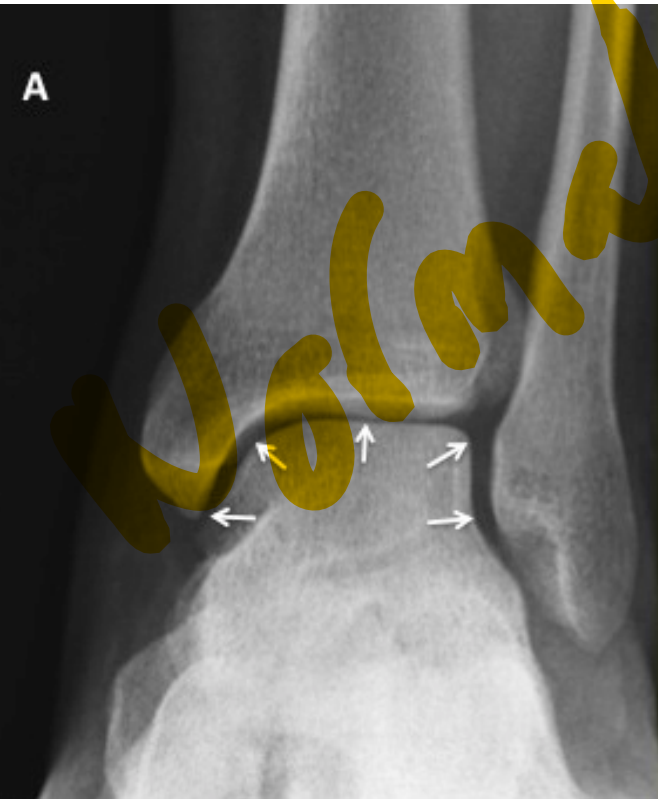
Post-traumatic joint arthritis



old fracture



Normal

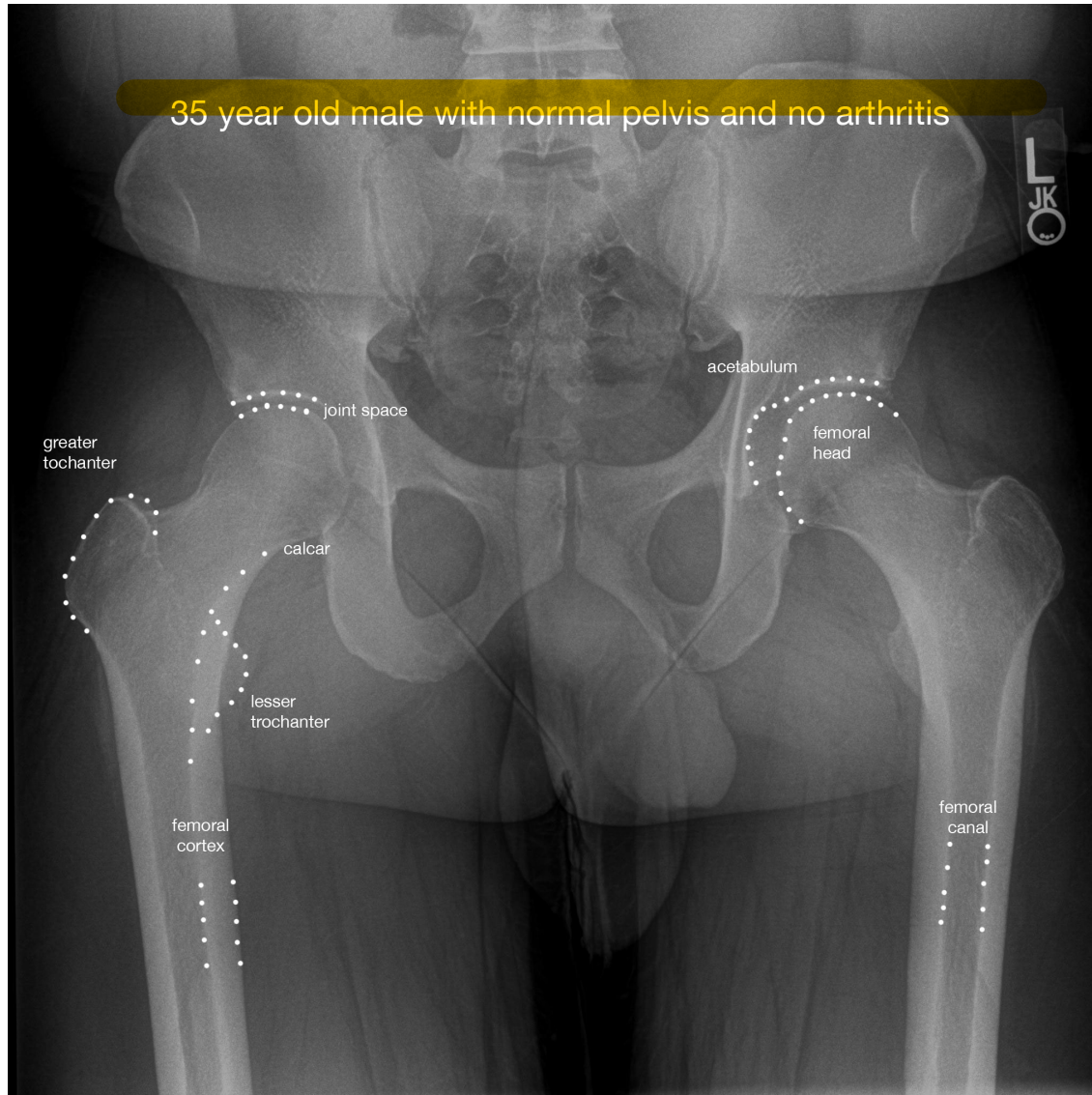


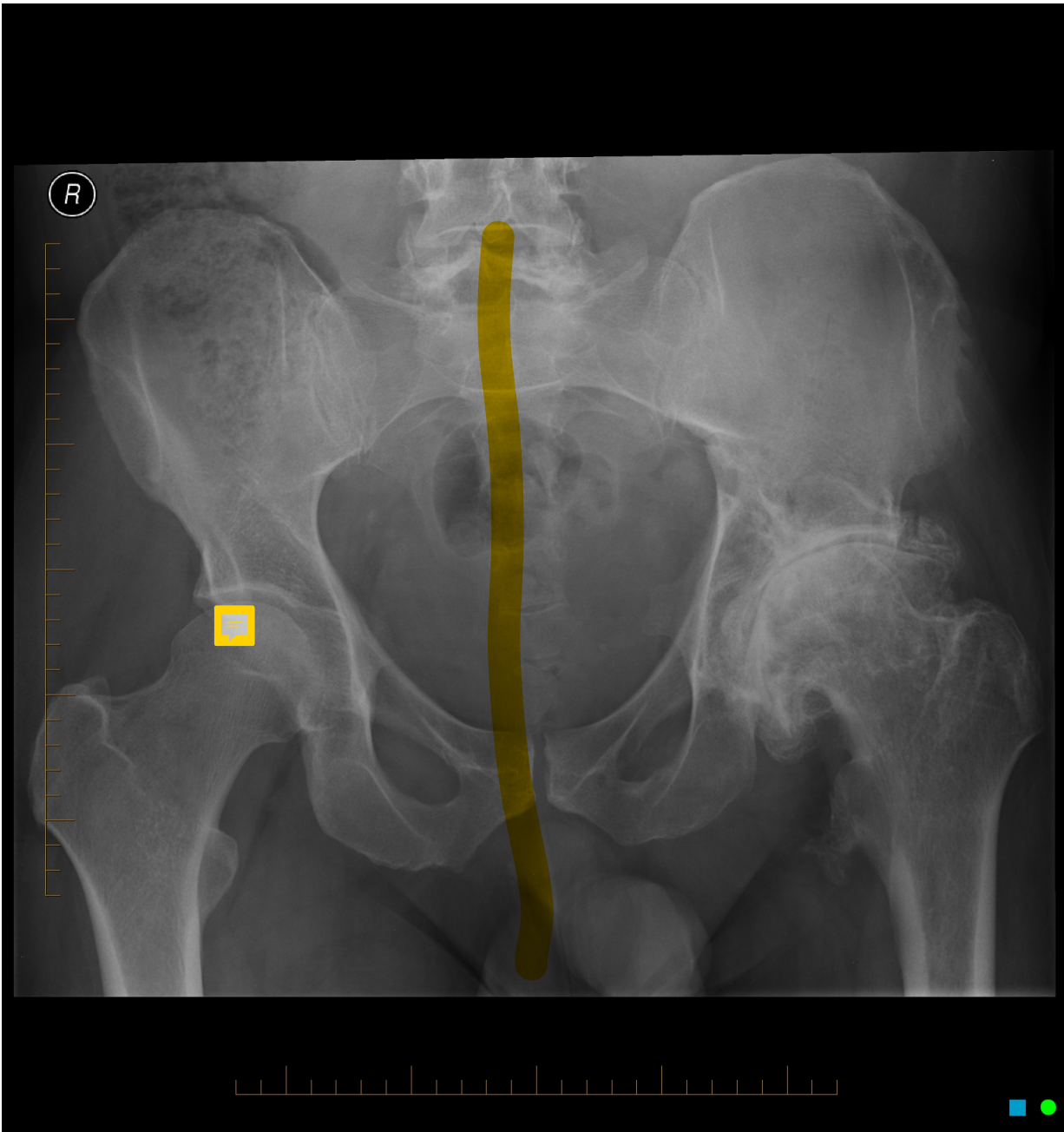
Subchondral Sclerosis

- 1) Narrow joint space
- 2) Osteophytes



35 year old male with normal pelvis and no arthritis

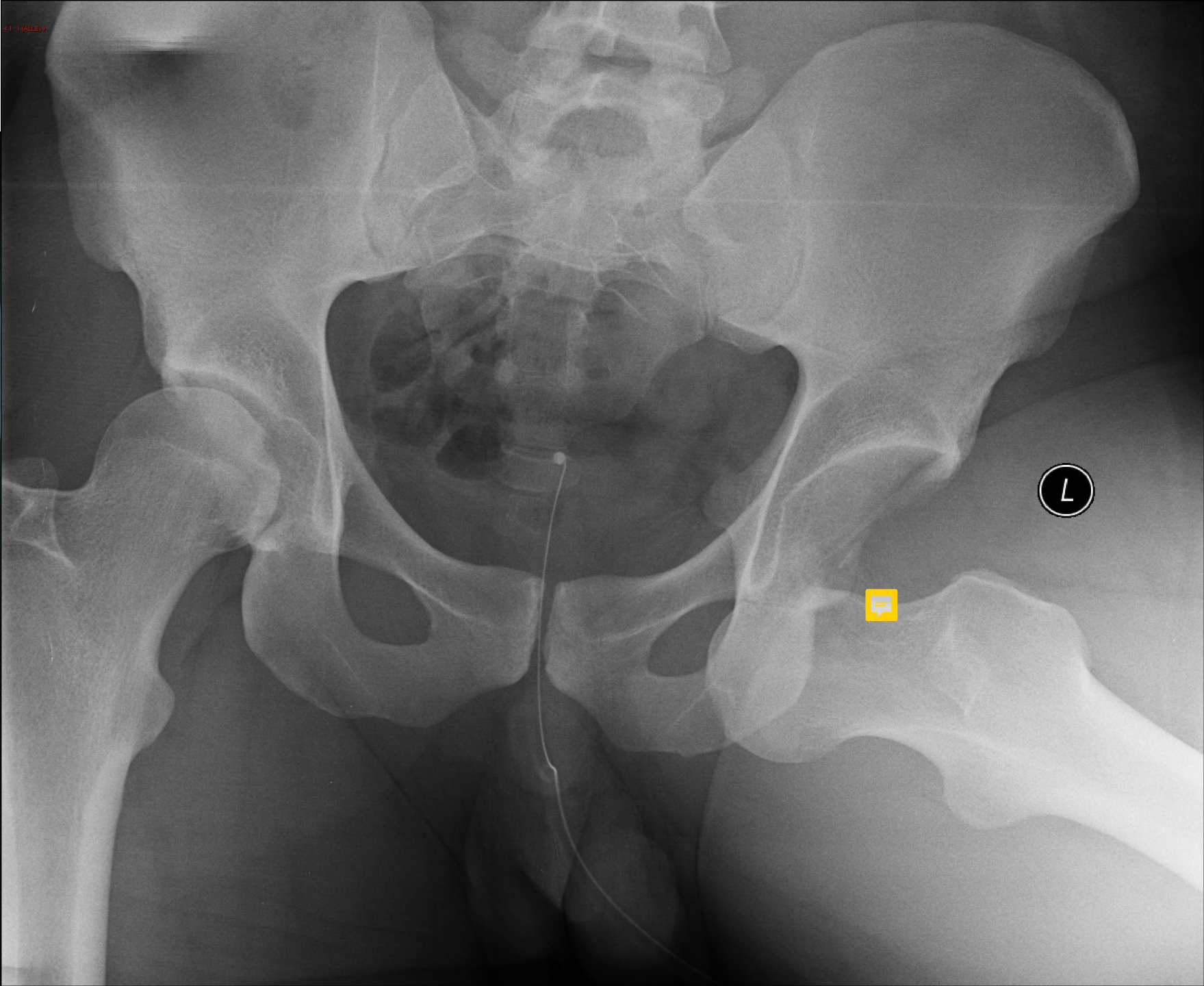




loss of joint
Space, osteoph.
Subchondral
Sclerosis
↓
بماضي
عجوة أكثر
من الأخرى



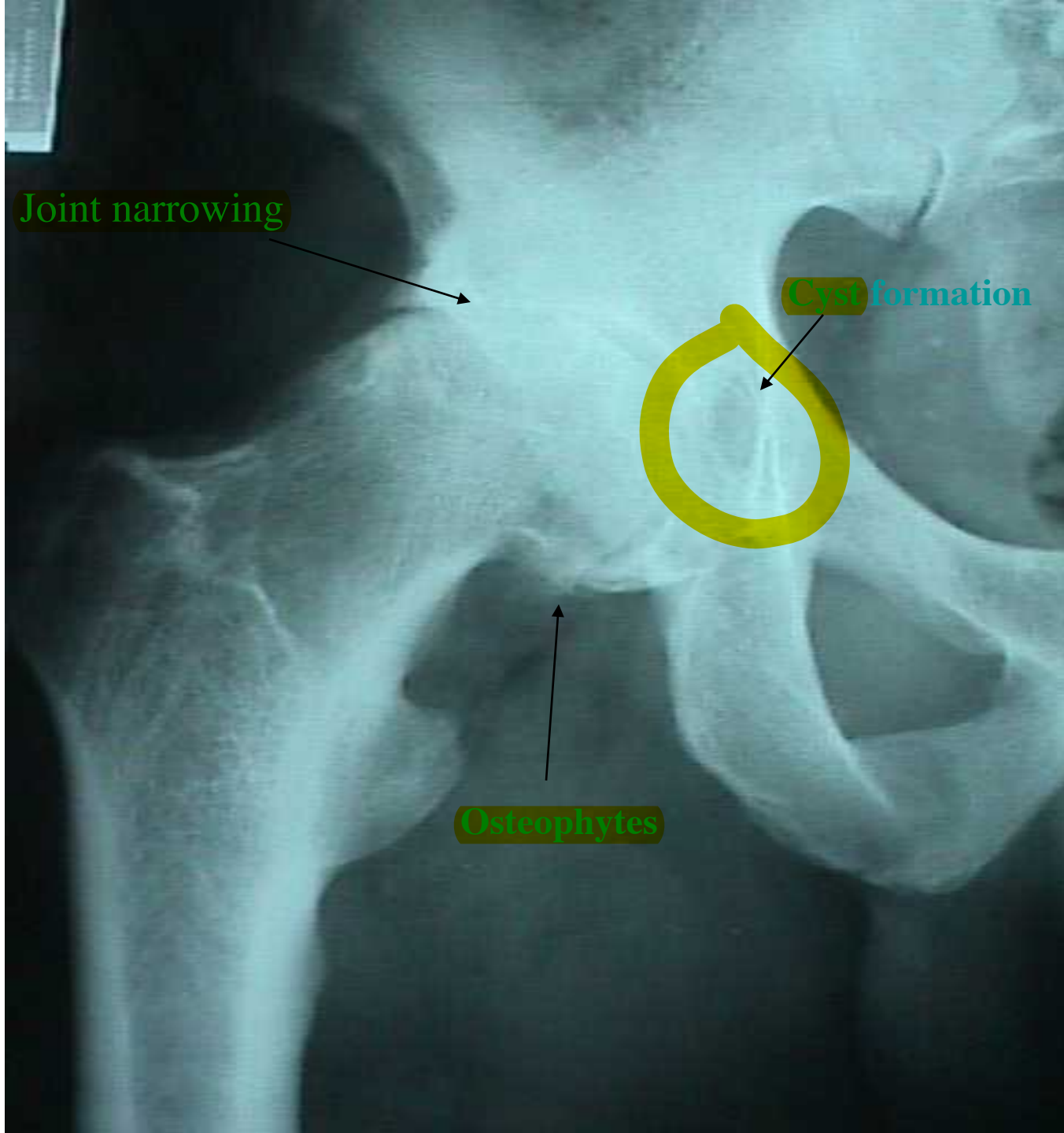
Advanced hip arthritis



Joint narrowing

Cyst formation

Osteophytes



Dysplasia

Hip dysplasia
not fully covered
head



cyst formation

acetabulum
not fully formed

Protrusio

femur head goes inside
bone

overcovering



Treatment:


Conservative.

Surgical.

Conservative.

- Weight. *Reduction*
- Exercise.
- Physiotherapy.
- Walking aid.
- Analgesia. → simple first like paradol then NSAIDs then drugs like tramadol

bad side effect
PUD, upper GI bleeding



Conservative.

- Supplements. *not helpful on studies*
- we can also give NSAIDs →* • Injections. *half/half on studies*
- Arthroscopy. *not helpful on studies*
- Guidelines.

Stem cells penifecial as bone graft not to OA

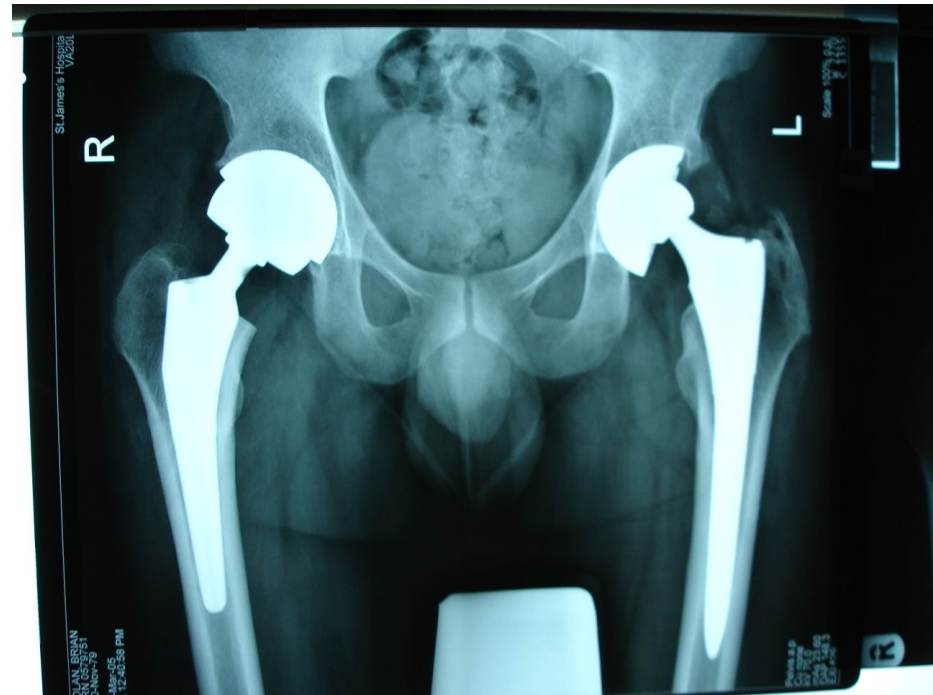
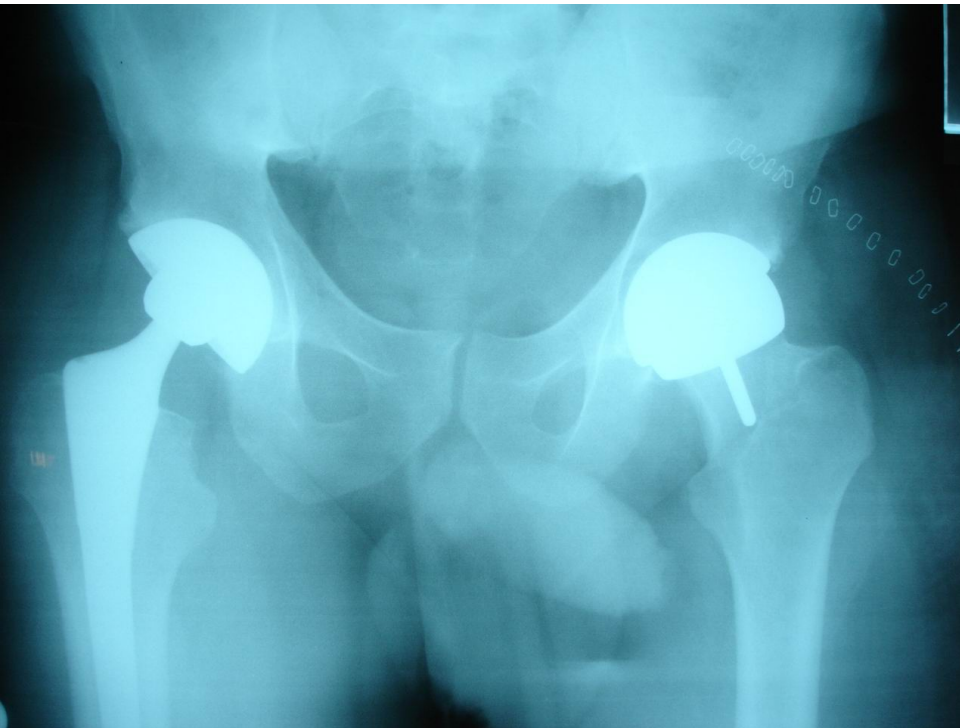
↓
(No evidence) not standard practice, not helpful
(Research tool)

essential Nutri.: WE can't make in the body like:
water, OMEGA, essential aminoacids, vitamins ...

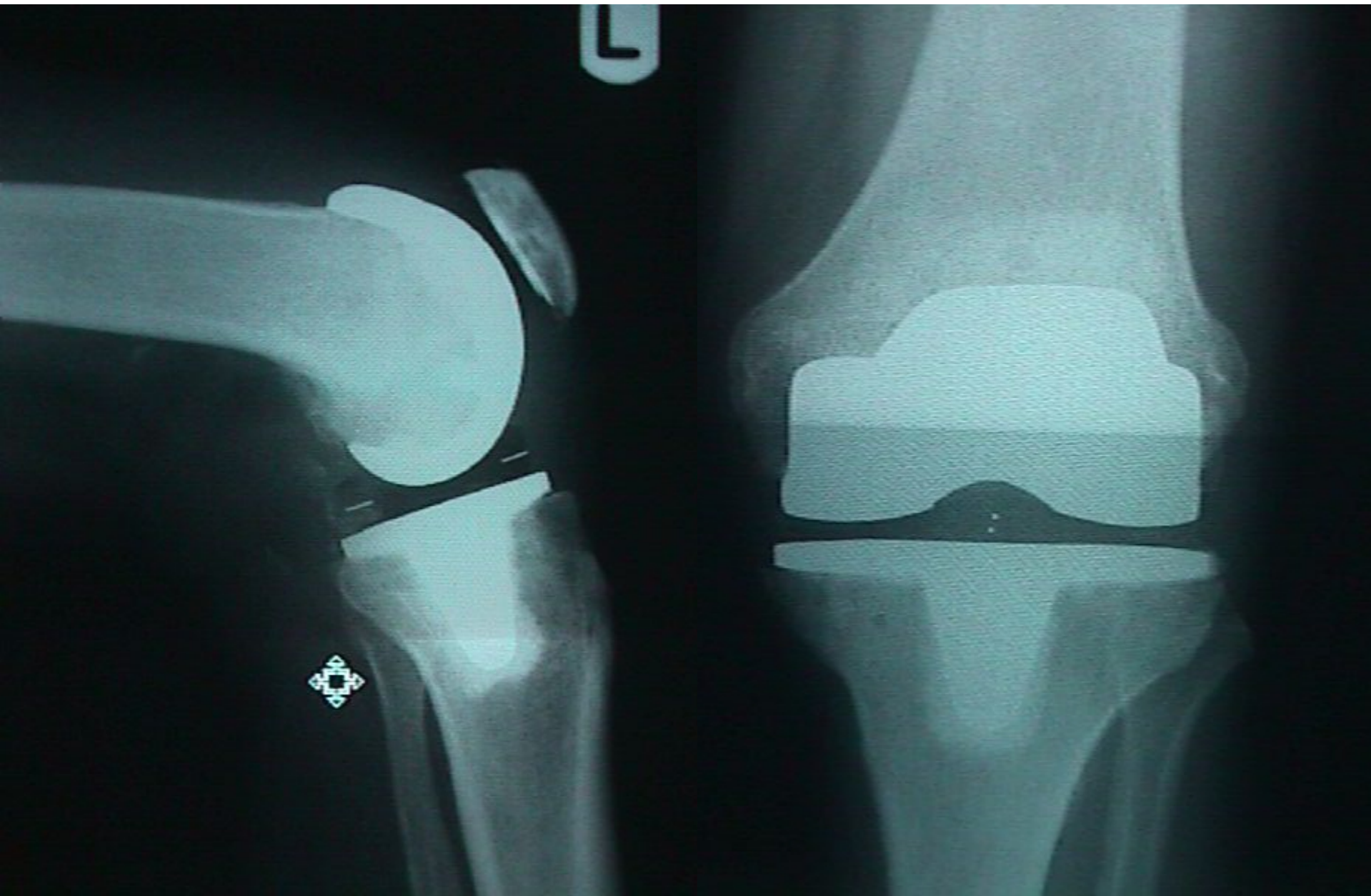
Surgical:

- ① Replacement
- ② Fusion Joint
- ③ Excision
- ④ Redirection

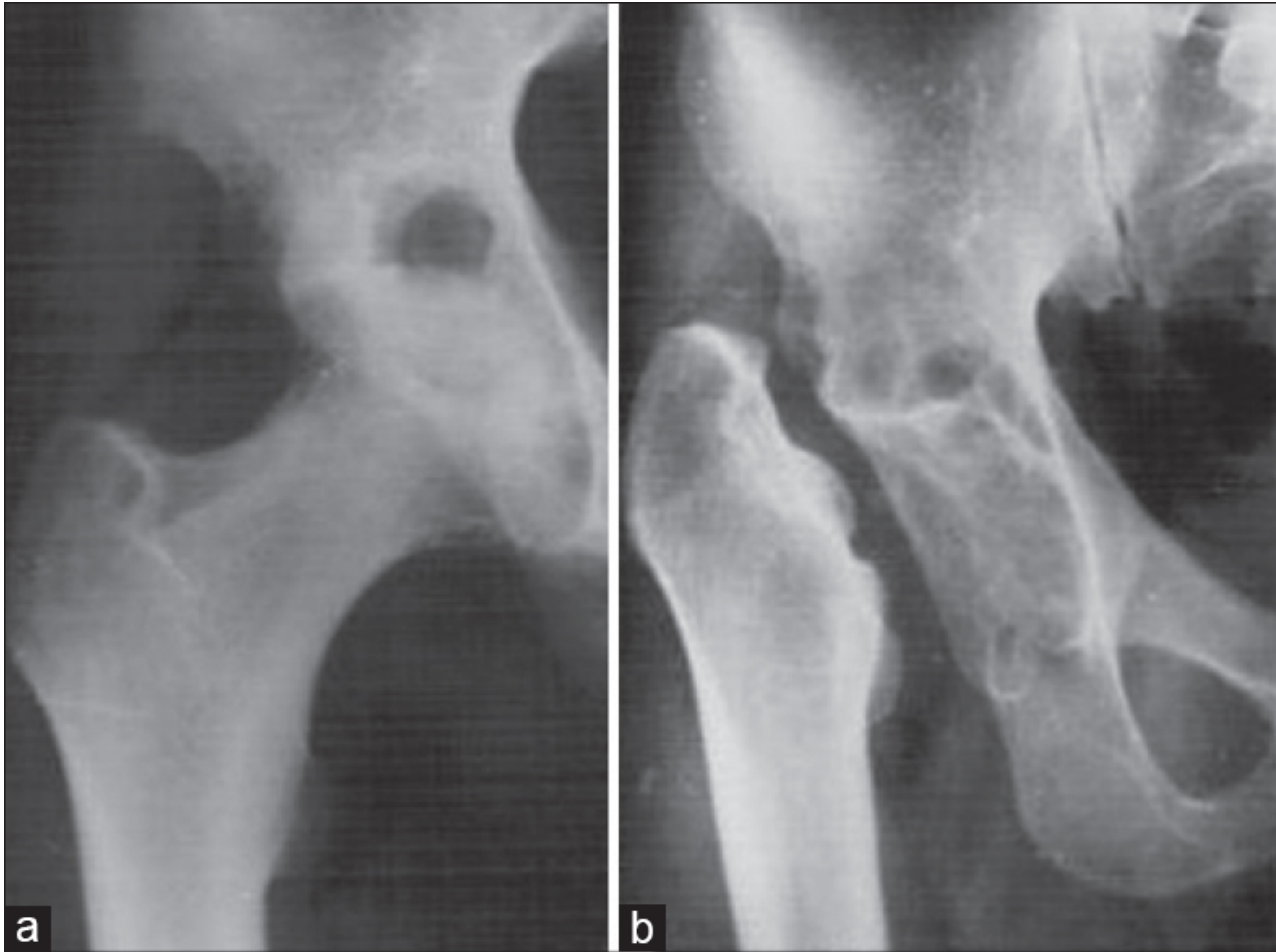
Replacement:



LCS TKR (DePuy)



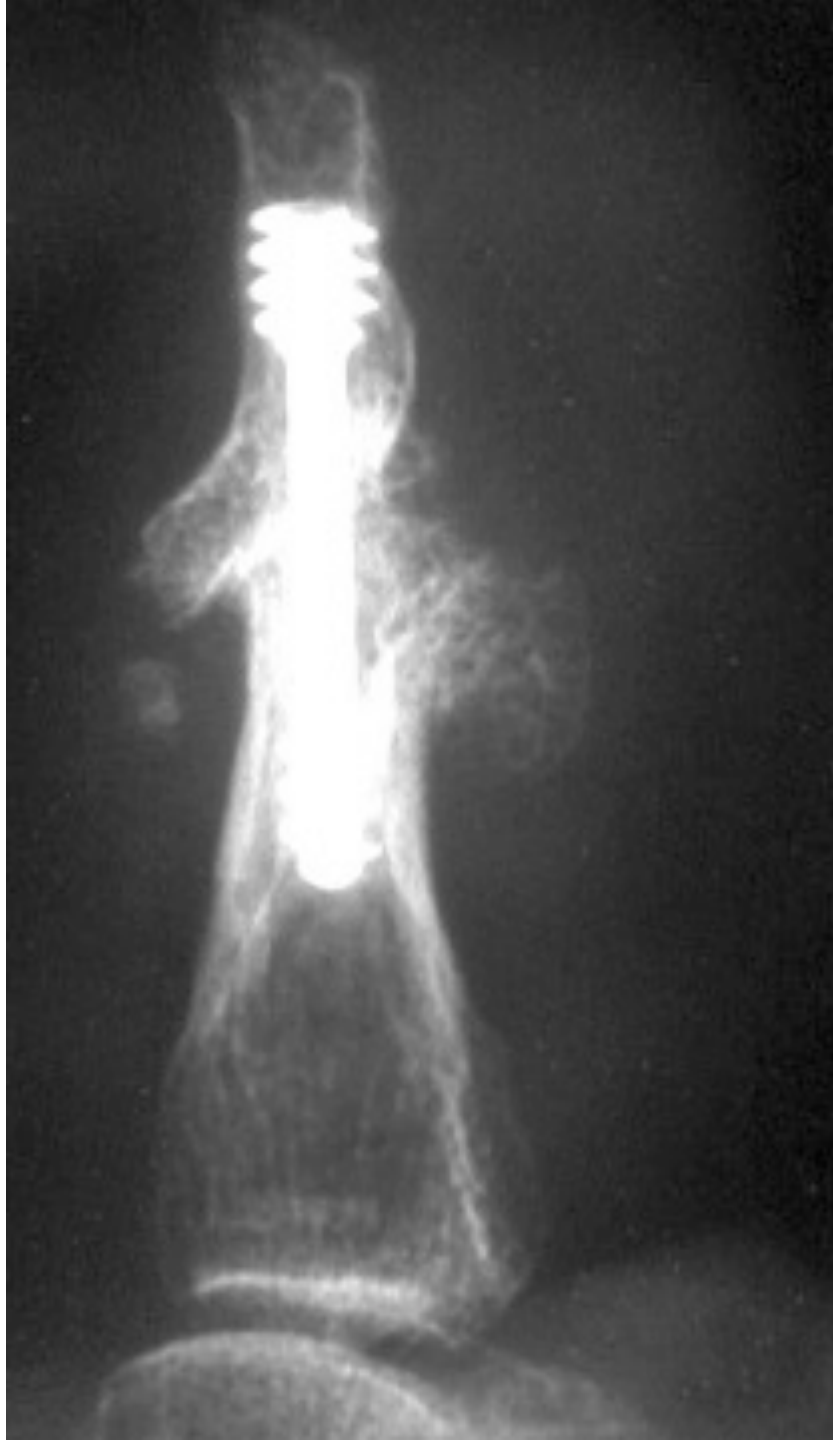
Exsion : much better but not walking



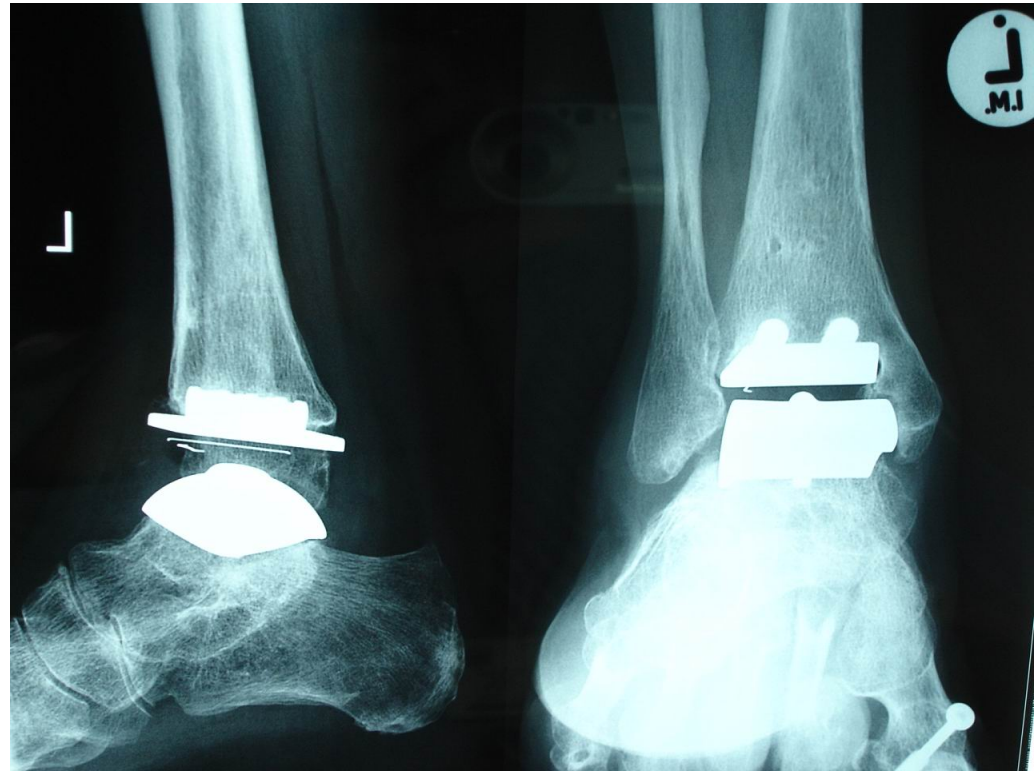




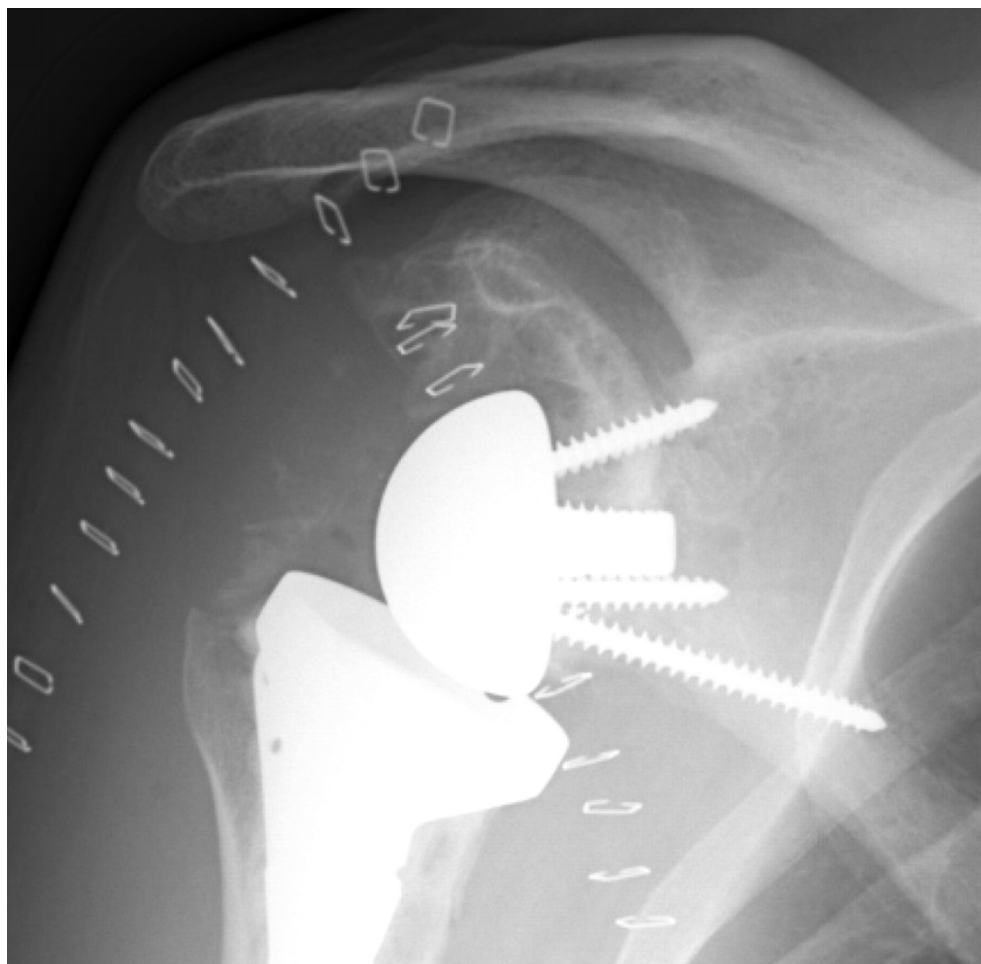
Finger



ankle fusion







Complications:

- Early:
 - Infection.
 - Thrombo-embolic.
 - Dislocation.
 - Nerve injury.
- Late:
 - infection.
 - Loosening.
 - Wear.